

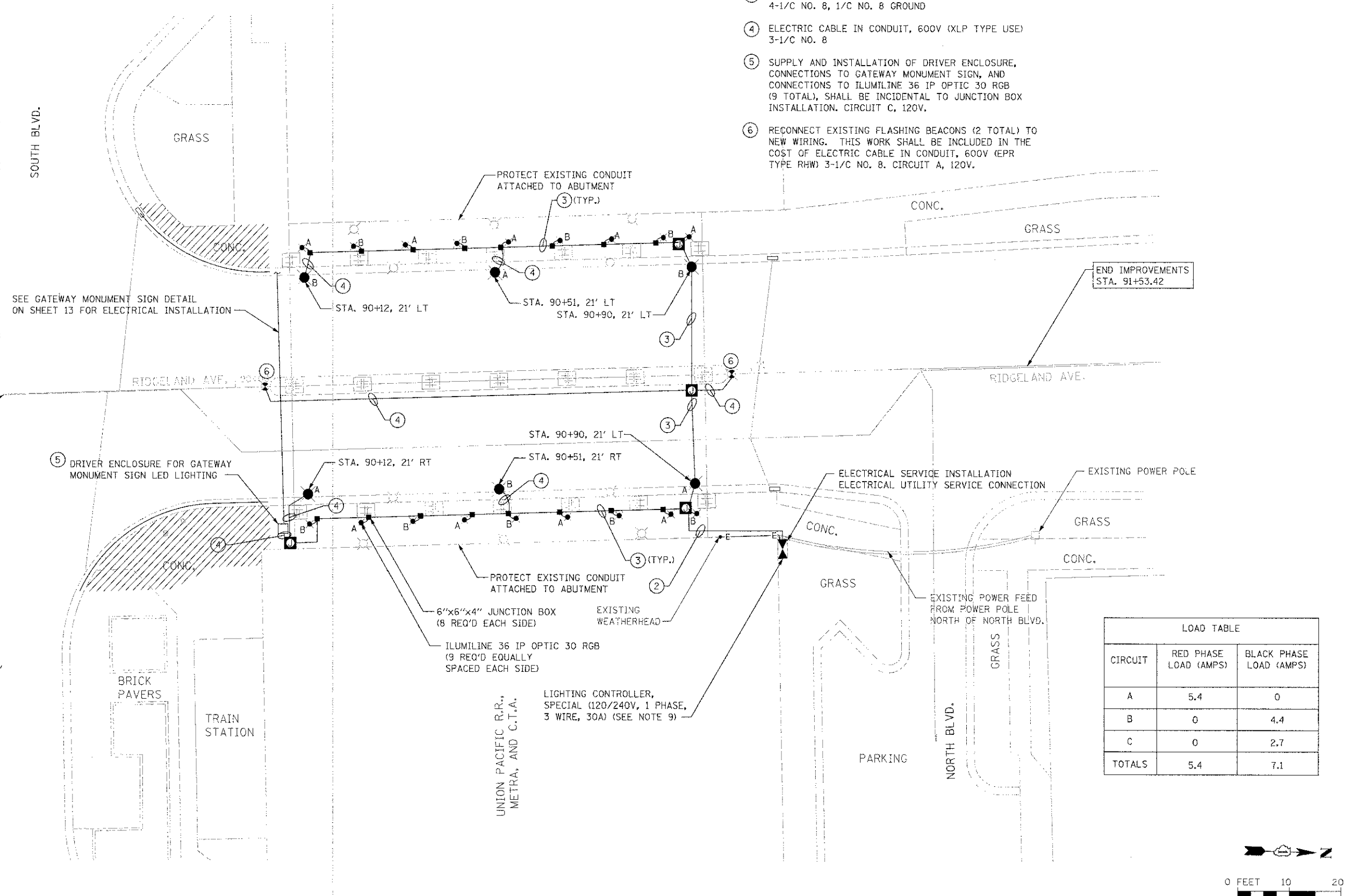
GENERAL NOTES:

1. ANY REFERENCE TO A STANDARD IN THESE PLANS SHALL BE TAKEN TO MEAN THE LATEST EDITION OF NEC, IES, & IDOT STANDARDS.
2. ALL NEW CONDUIT SHALL BE PVC-COATED RIGID GALVANIZED STEEL. CONDUIT MOUNTED TO CONCRETE SURFACES SHALL UTILIZE STAINLESS STEEL HARDWARE.
3. UNDERPASS ROADWAY LUMINAIRES SHALL BE WALL-MOUNTED 10 FEET ABOVE PAVEMENT SURFACE. UNDERPASS SIDEWALK LUMINAIRES SHALL BE WALL-MOUNTED 9.5 FEET ABOVE PAVEMENT SURFACE.
4. JUNCTION BOXES SHALL BE MOUNTED TO CONCRETE WALL WITH STAINLESS STEEL UNISTRUT AND HARDWARE FOR MOUNTING. BOXES SHALL NOT BE MOUNTED DIRECTLY TO CONCRETE SURFACE.
5. ALL UNDERPASS ROADWAY LUMINAIRES SHALL BE 40 LAMPS, 66 WATTS, LED, 525MA DRIVER, DISTRIBUTION TYPE IV, MEDIUM CUTOFF, AT 120 V.
6. SPLICING OF CONDUCTORS SHALL ONLY BE ALLOWED IN THE LUMINAIRES OR IN JUNCTION BOXES.
7. REMOVAL OF EXISTING LUMINAIRE INCLUDES REMOVAL OF ALL ASSOCIATED CONDUIT, WIRE, JUNCTION BOXES, CONTROLLER, HARDWARE, AND APPURTENANT MATERIALS AS NOTED IN SECTION 842.03 OF THE STANDARD SPECIFICATIONS.
8. THE CONTRACTOR SHALL PROTECT THE EXISTING RAILING. ANY DAMAGE TO THE RAILING FROM THE CONTRACTOR'S OPERATIONS SHALL BE REPAIRED OR REPLACED AT NO COST TO THE CONTRACT.

9. THE LIGHTING CONTROLLER SHALL BE MOUNTED TO THE EXISTING ABUTMENT. REFER TO SHEET 16 FOR LIGHTING CONTROLLER DETAILS.

KEY NOTES:

- 1 INTERCEPT EXISTING LIGHTING AND FLASHING BEACON CIRCUITS AT EXISTING CONDUIT BELOW PROPOSED JUNCTION BOX
- 2 ELECTRIC CABLE IN CONDUIT, 600V (XLP TYPE USE), 6-1/C NO. 8, 1/C NO. 8 GROUND
- 3 ELECTRIC CABLE IN CONDUIT, 600V (XLP TYPE USE), 4-1/C NO. 8, 1/C NO. 8 GROUND
- 4 ELECTRIC CABLE IN CONDUIT, 600V (XLP TYPE USE) 3-1/C NO. 8
- 5 SUPPLY AND INSTALLATION OF DRIVER ENCLOSURE, CONNECTIONS TO GATEWAY MONUMENT SIGN, AND CONNECTIONS TO ILLUMILINE 36 IP OPTIC 30 RGB (9 TOTAL), SHALL BE INCIDENTAL TO JUNCTION BOX INSTALLATION. CIRCUIT C, 120V.
- 6 RECONNECT EXISTING FLASHING BEACONS (2 TOTAL) TO NEW WIRING. THIS WORK SHALL BE INCLUDED IN THE COST OF ELECTRIC CABLE IN CONDUIT, 600V (EPR TYPE RHW) 3-1/C NO. 8. CIRCUIT A, 120V.



LEGEND:

- X LIGHTING UNIT COMPLETE (X=CIRCUIT DESIGNATION)
- X ILLUMILINE 36 IP OPTIC 30 RGB (X=CIRCUIT DESIGNATION)
- JUNCTION BOX, STAINLESS STEEL, ATTACHED TO STRUCTURE, 12"x12"x6"
- JUNCTION BOX, 6"x6"x4"
- E CONDUIT ATTACHED TO STRUCTURE, 1 1/2" DIA., PVC COATED GALVANIZED STEEL
- X REMOVAL OF EXISTING LUMINAIRE, NO SALVAGE
- EXISTING HANDHOLE
- X EXISTING FLASHING BEACON
- (X) KEY NOTE
- A EXISTING AERIAL
- DRIVER

LOAD TABLE		
CIRCUIT	RED PHASE LOAD (AMPS)	BLACK PHASE LOAD (AMPS)
A	5.4	0
B	0	4.4
C	0	2.7
TOTALS	5.4	7.1



FILE NAME: S:\JDL\67700-6799\6781\012\Network\CADD\Sheet\0163722-shr-rdgeland-elec.dgn

SA STRAND ASSOCIATES*
1170 SOUTH HOUBOLT ROAD
JOLIET, ILLINOIS 60431
(815) 744-4200

USER NAME = denissw	DESIGNED = JDM	REVISED =
PLT SCALE = 1/4" = 1'-0"	DRAWN = JKP	REVISED =
PLT DATE = 1/4/2013	CHECKED = MTC	REVISED =
	DATE = 05-07-2012	REVISED =

**STATE OF ILLINOIS
DEPARTMENT OF TRANSPORTATION**

RIDGELAND AVENUE ELECTRIC PLAN

SCALE: SHEET OF SHEETS STA. TO STA.

F.A.U. RTE. 2783	SECTION 11-00253-00-LS	COUNTY COOK	TOTAL SHEETS 25	SHEET NO. 12
				CONTRACT NO. 63722
ILLINOIS FED. AID PROJECT				