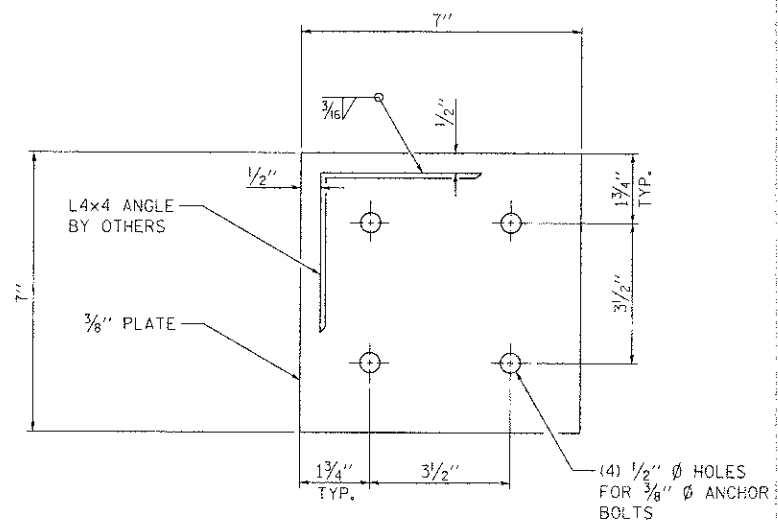


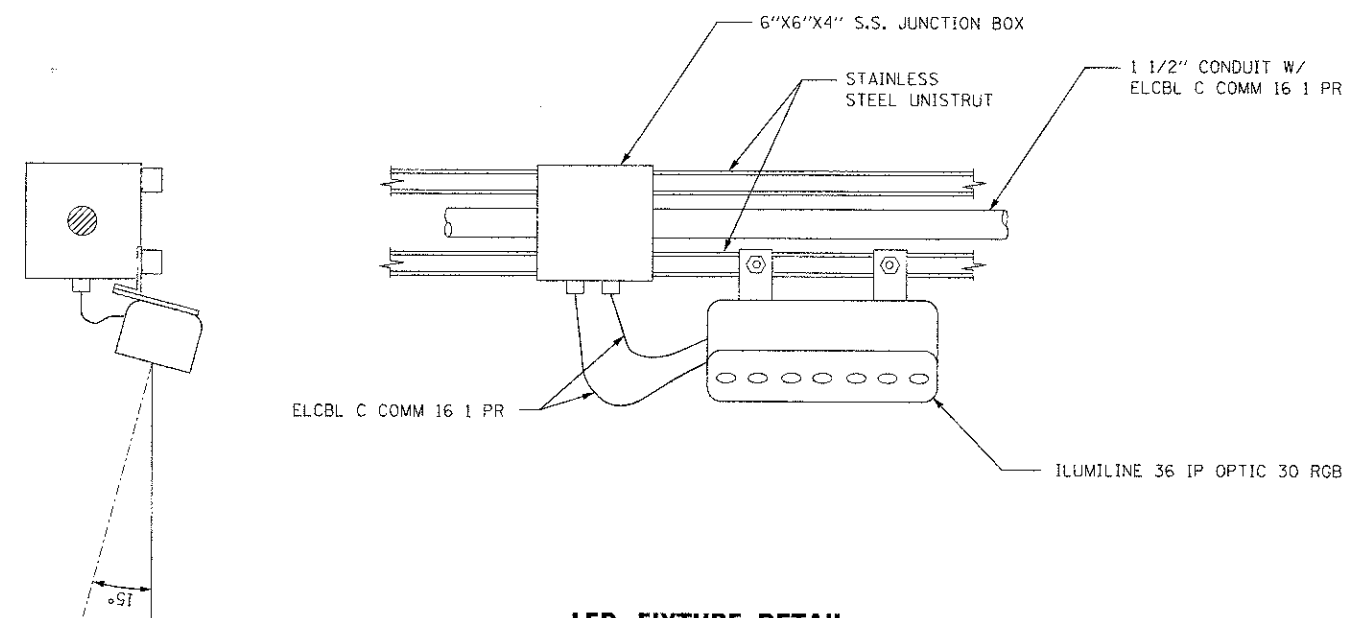
BASE PLATE DETAIL

DESIGN LOADING:

P = ±764 LBS (MAX FACTORED VERTICAL NET LOADING DUE TO WIND)
 V_y = ±870 LBS (MAX FACTORED HORIZONTAL NET LOADING PERPENDICULAR TO LONG. DIRECTION OF THE SIDEWALK DUE TO WIND)
 V_x = ±250 LBS (MAX FACTORED HORIZONTAL NET LOADING PARALLEL TO LONG. DIRECTION OF THE SIDEWALK DUE TO WIND)



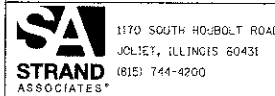
BASE PLATE DETAIL



LED FIXTURE DETAIL

APPLIES ONLY TO RIDGELAND AVENUE VIADUCT

FILE NAME = S:\JDA\10700-6779\6791\012\Microstation\CADD_Sheets\0153722-shr-elect-061.dgn



| | | |
|-----------------------------|-------------------|-----------|
| USER NAME = dennisw | DESIGNED - JDM | REVISED - |
| PLOT SCALE = 10.0000 "/ IN. | DRAWN - JKP | REVISED - |
| PLOT DATE = 1/4/2013 | CHECKED - MTC | REVISED - |
| | DATE - 05-07-2012 | REVISED - |

STATE OF ILLINOIS
DEPARTMENT OF TRANSPORTATION

| DETAILS | | | | |
|---------|-------|----|--------|--------------|
| SCALE: | SHEET | OF | SHEETS | STA. TO STA. |

| | | | | |
|---------------------------|------------------------|-------------|-----------------|--------------|
| F.A.I. R.I.E. 2783 | SECTION 11-00253-00-L5 | COUNTY COOK | TOTAL SHEETS 25 | SHEET NO. 15 |
| CONTRACT NO. 63722 | | | | |
| ILLINOIS FED. AID PROJECT | | | | |

