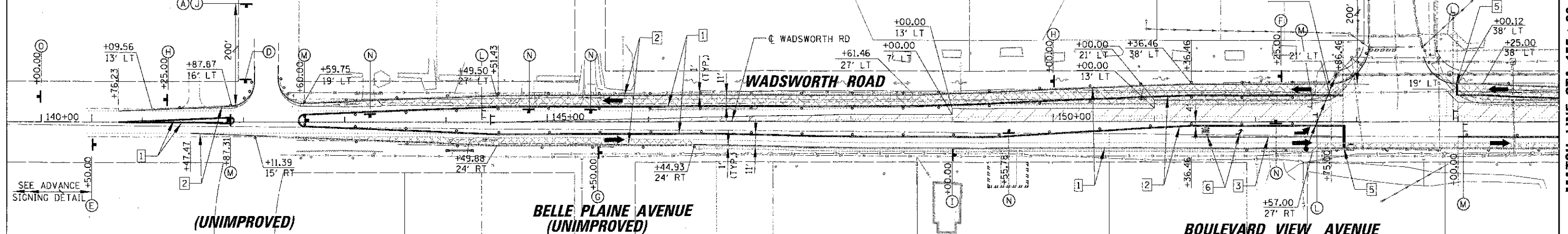
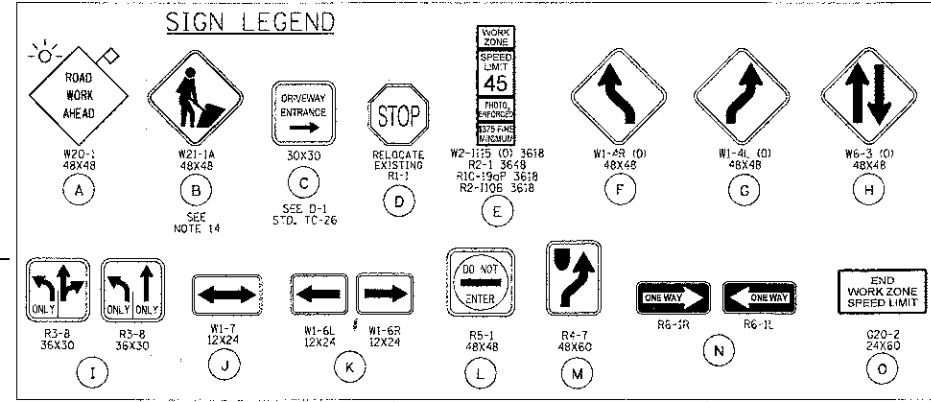


ADVANCE SIGNING DETAIL
N. PINE GROVE AVENUE

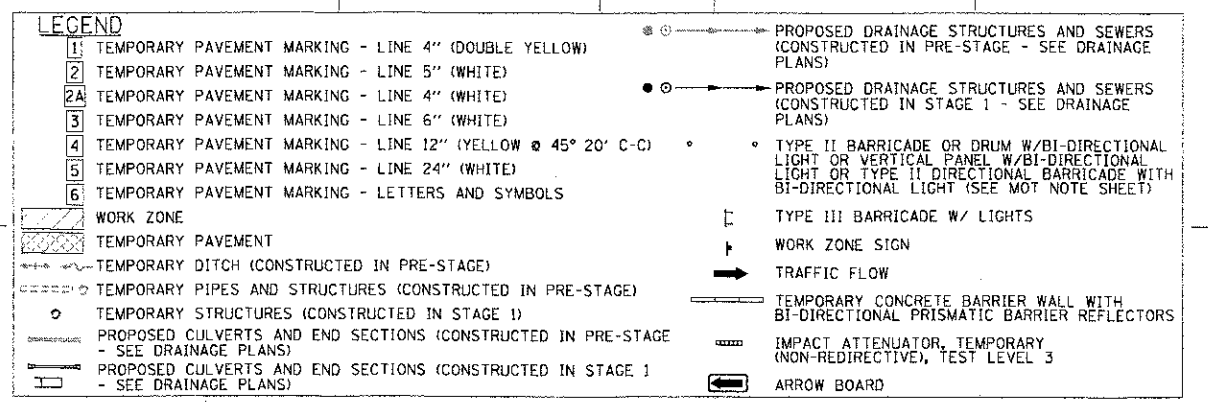
CAMBRIDGE AVENUE
SEE TRAFFIC SIGNAL PLANS FOR TEMPORARY TRAFFIC SIGNAL INFORMATION



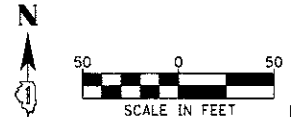
MATCH LINE STA. 155 + 00



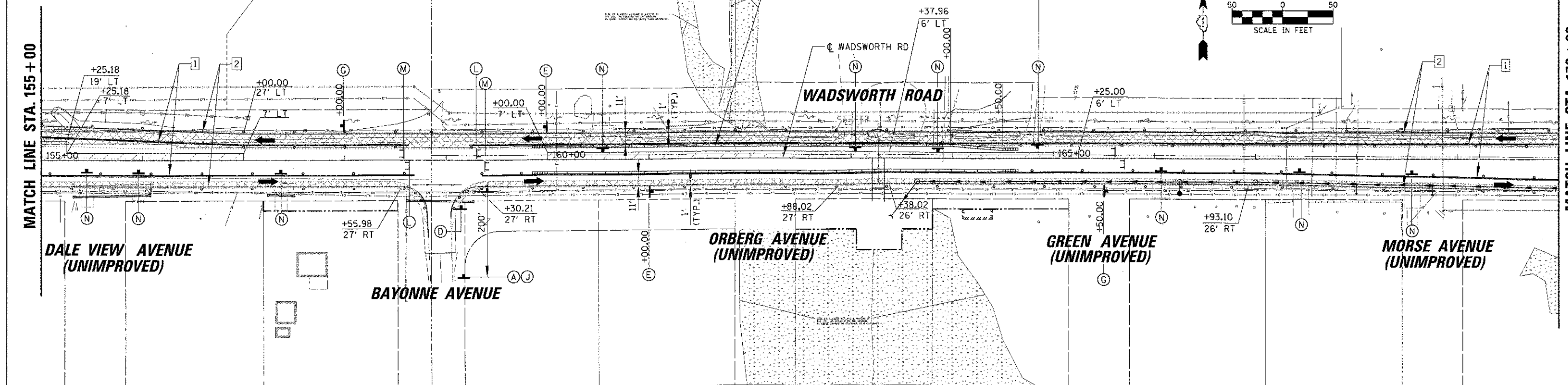
NOTE: STAGE 1 WESTBOUND LANE TEMPORARY PAVEMENT MARKINGS TO REMAIN UNTIL END OF STAGE 2.1



RELOCATE TEMPORARY CONCRETE BARRIER AND TEMPORARY IMPACT ATTENUATORS TO NEW OFFSET



MATCH LINE STA. 155 + 00



MATCH LINE STA. 170 + 00

| | | | | | | | | | | | | |
|--|----------------------|-----------------|-----------------|---|--|-----------------|-----------------|--------------------|------------------------|--------------------|------------------|--------------|
| FILE NAME: N:\C031\4229\civil\WGT_STAGE2.L\WADSWORTH_L01.SHT | USER NAME: maguel | DESIGNED: _____ | REVISION: _____ | STATE OF ILLINOIS DEPARTMENT OF TRANSPORTATION | WADSWORTH ROAD MAINTENANCE OF TRAFFIC - STAGE 2.1 STA. 140 + 76.25 TO STA. 170 + 00 | | | F.A.L. R.T.E. 1209 | SECTION 03-00033-12-CH | COUNTY LAKE | TOTAL SHEETS 189 | SHEET NO. 53 |
| PLT SCALE: 1/8" = 1' | PLT DATE: 11/13/2012 | DRAWN: _____ | REVISION: _____ | | SCALE: _____ | SHEET NO. _____ | OF SHEETS _____ | STA. _____ | TO STA. _____ | CONTRACT NO. 63766 | | |
| CHECKED: _____ | DATE: _____ | REVISION: _____ | REVISION: _____ | | FED. ROAD DIST. NO. 1 ILLINOIS FED. AID PROJECT | | | | | | | |
| | | | | | | | | | | | | |