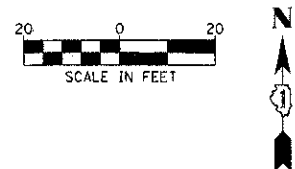
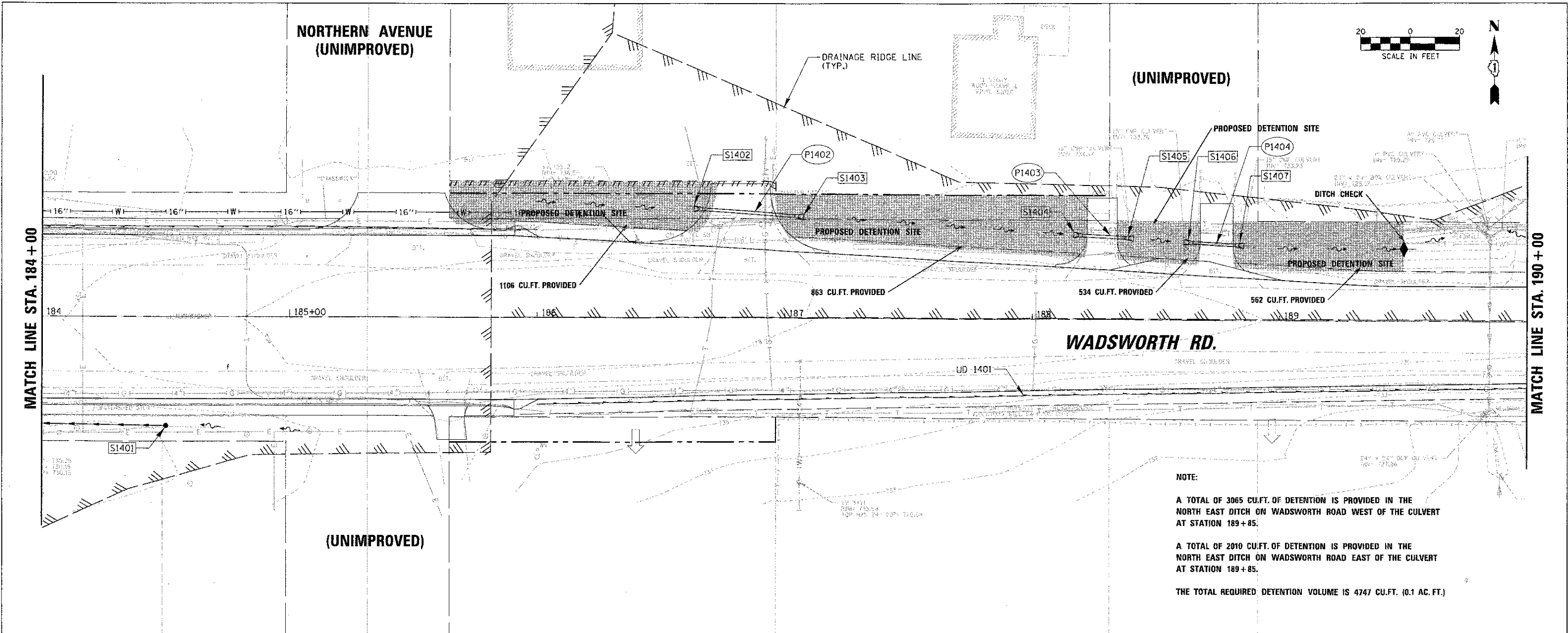


BY	DATE
DESIGNED	
DRAWN	
CHECKED	
DATE	

PROJECT	DATE
NO.	
DATE	
NO.	
DATE	
NO.	

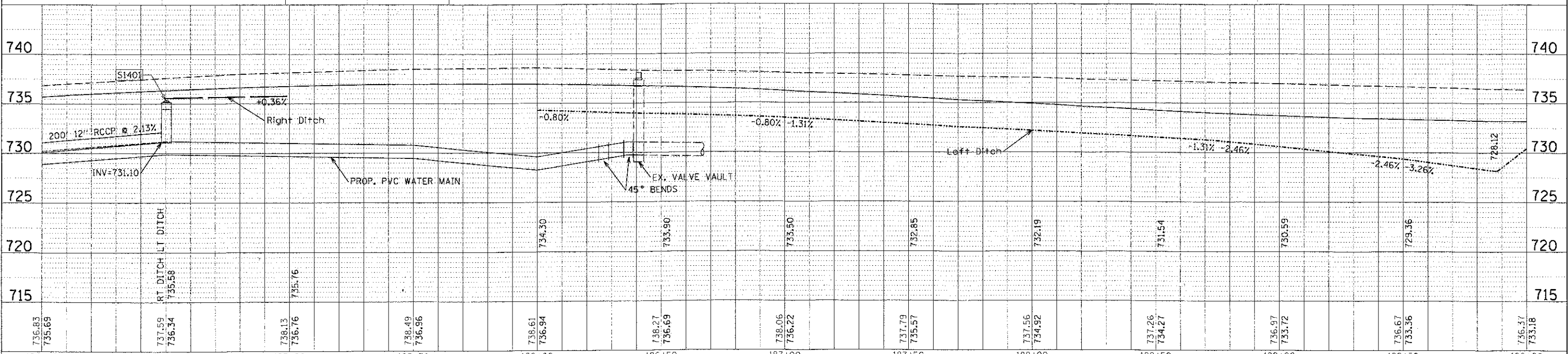


NOTE:

A TOTAL OF 3065 CU.FT. OF DETENTION IS PROVIDED IN THE NORTH EAST DITCH ON WADSWORTH ROAD WEST OF THE CULVERT AT STATION 189+85.

A TOTAL OF 2010 CU.FT. OF DETENTION IS PROVIDED IN THE NORTH EAST DITCH ON WADSWORTH ROAD EAST OF THE CULVERT AT STATION 189+85.

THE TOTAL REQUIRED DETENTION VOLUME IS 4747 CU.FT. (0.1 AC. FT.)



FILE NAME	USER NAME	DESIGNED	REVISIONS	WADSWORTH ROAD NORTH EAST DITCH DETENTION STORAGE SITE				F.A.U. R.T.C.	SECTION	COUNTY	TOTAL SHEETS
N:\L\DOT\64225\1\Draw\DETENTION 02.SHP								1209	03-00033-12-CH	LAKE	189 / 83
PL01 SCALE = 2"	PL01 DATE = 11/13/2012	CHECKED	REVISIONS	SCALE:	SHEET NO.	OF SHEETS	STA.	TO STA.	CONTRACT NO. 63766		
		DATE		FED. ROAD DIST. NO. 1 ILLINOIS FED. AID PROJECT							