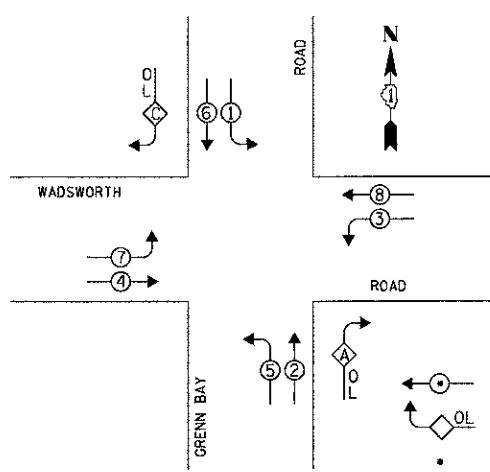


PROFILE: SURVEYED, GRADES CHECKED, STRUCTURE NOTATIONS OK'D
 NOTE BOOK NO. 18471823-0500
 PLAN: SURVEYED, ALIGNED, CHECKED, ST. OF WAY CHECKED, POLE FILE NAME
 NO. 18471823-0500
 CHRISTOPHER B. BURKE ENGINEERING LTD.
 9575 West Higgins Road, Suite 600
 Rosemont, Illinois 60018
 (847) 823-0500

CONTROLLER SEQUENCE



CONSTRUCTION NOTE:

① THE TRAFFIC SIGNAL CONTROLLER SHALL BE NTCIP COMPATIBLE.

NOTE:
THE TRAFFIC SIGNAL CONTROLLER EQUIPMENT FOR THIS PROJECT SHALL BE "ECONOLITE" TO MATCH THE EXISTING ADJACENT SYSTEM.

LEGEND
 DUAL ENTRY PHASE
 OVERLAP
 NUMBER REFERS TO ASSOCIATED PHASE

PHASE DESIGNATION DIAGRAM

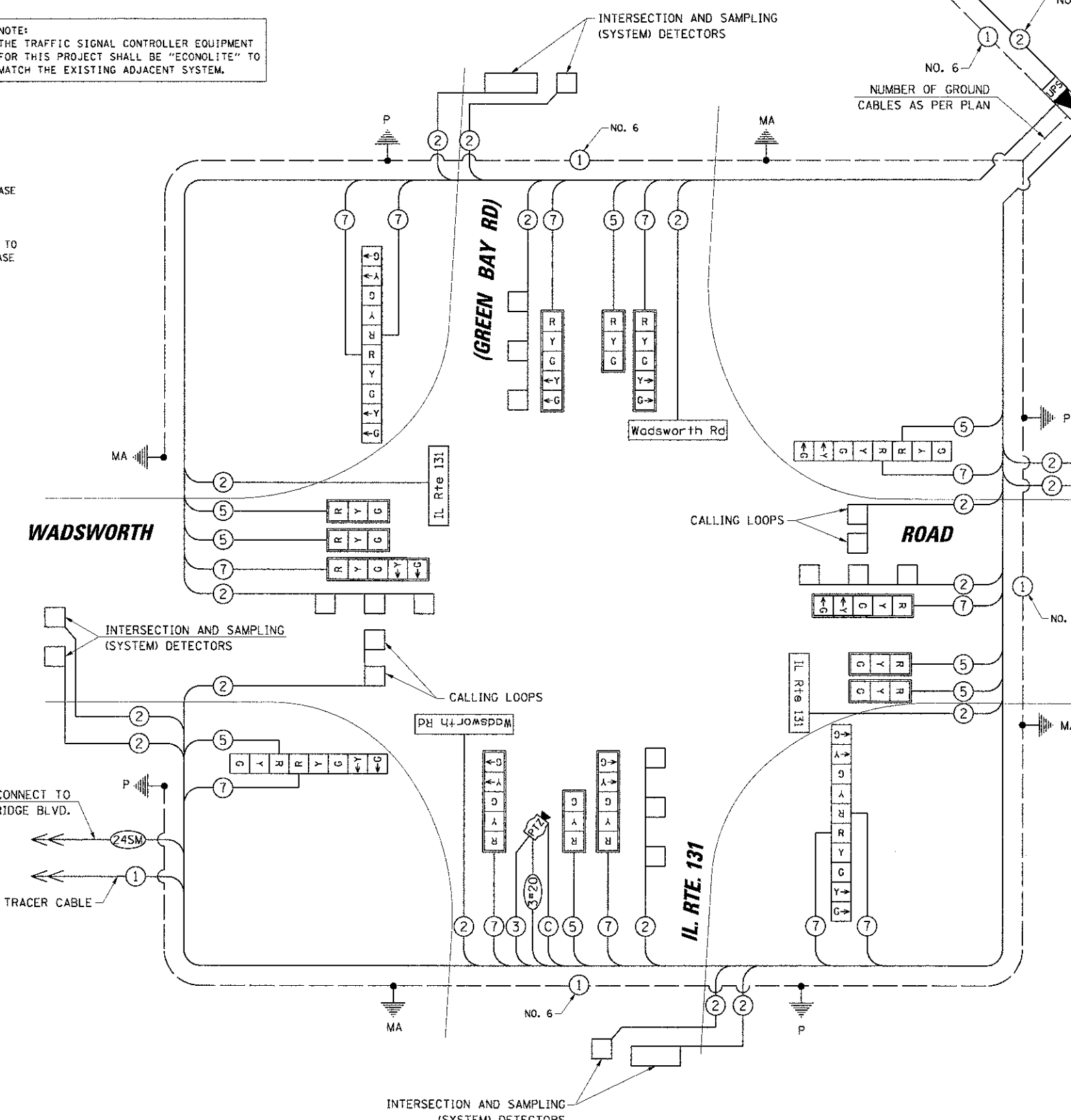
OVERLAP LETTER	PERMISSIVE PHASE	PROTECTED PHASE
A	2	3
C	6	7

CABLE PLAN LEGEND

- | | | | | | | | | | | | | | | | | | | | | | | |
|--|--|--|--|--|--|--|--|--|--|--|--|--|--|--|--|--|--|--|--|--|--|--|
| | | | | | | | | | | | | | | | | | | | | | | |
|--|--|--|--|--|--|--|--|--|--|--|--|--|--|--|--|--|--|--|--|--|--|--|

SCHEDULE OF QUANTITIES

ITEM	UNIT	TOTAL
UNDERGROUND CONDUIT, GALVANIZED STEEL, 2" DIA.	FOOT	1327
UNDERGROUND CONDUIT, GALVANIZED STEEL, 2 1/2" DIA.	FOOT	70
UNDERGROUND CONDUIT, GALVANIZED STEEL, 3" DIA.	FOOT	80
UNDERGROUND CONDUIT, GALVANIZED STEEL, 4" DIA.	FOOT	517
HANDHOLE	EACH	6
HEAVY-DUTY HANDHOLE	EACH	4
DOUBLE HANDHOLE	EACH	2
FULL-ACTUATED CONTROLLER AND TYPE IV CABINET	EACH	1
ELECTRIC CABLE IN CONDUIT, SIGNAL NO. 14 2C	FOOT	847
ELECTRIC CABLE IN CONDUIT, SIGNAL NO. 14 3C	FOOT	712
ELECTRIC CABLE IN CONDUIT, SIGNAL NO. 14 5C	FOOT	1725
ELECTRIC CABLE IN CONDUIT, SIGNAL NO. 14 7C	FOOT	2478
ELECTRIC CABLE IN CONDUIT, LEAD-IN, NO. 14 1 PAIR	FOOT	4355
ELECTRIC CABLE IN CONDUIT, SERVICE, NO. 6 2C	FOOT	49
TRAFFIC SIGNAL POST, GALVANIZED STEEL 16 FT.	EACH	4
STEEL MAST ARM ASSEMBLY AND POLE, 44 FT.	EACH	1
STEEL MAST ARM ASSEMBLY AND POLE, 48 FT.	EACH	2
STEEL COMBINATION MAST ARM ASSEMBLY AND POLE, 46 FT.	EACH	1
CONCRETE FOUNDATION TYPE A	FOOT	16
CONCRETE FOUNDATION TYPE C	FOOT	4
CONCRETE FOUNDATION TYPE E, 36-INCH DIAMETER	FOOT	60
SIGNAL HEAD, LED, 1-FACE, 3-SECTION, MAST ARM MOUNTED	EACH	6
SIGNAL HEAD, LED, 1-FACE, 5-SECTION, MAST ARM MOUNTED	EACH	6
SIGNAL HEAD, LED, 2-FACE, 5-SECTION, BRACKET MOUNTED	EACH	2
SIGNAL HEAD, LED, 2-FACE, 1-3 SECTION, 1-5 SECTION, BRACKET MOUNTED	EACH	2
TRAFFIC SIGNAL BACKPLATE, LOUVERED, ALUMINUM	EACH	12
INDUCTIVE LOOP DETECTOR	EACH	14
DETECTOR LOOP, TYPE I	FOOT	853
TEMPORARY TRAFFIC SIGNAL INSTALLATION	EACH	1
REMOVE EXISTING TRAFFIC SIGNAL EQUIPMENT	EACH	1
REMOVE EXISTING HANDHOLE	EACH	14
REMOVE EXISTING CONCRETE FOUNDATION	EACH	9
ELECTRIC CABLE IN CONDUIT, COAXIAL	FOOT	374
LED INTERNALLY ILLUMINATED STREET NAME SIGN	EACH	4
REMOTE CONTROLLED VIDEO SYSTEM	EACH	1
LAYER II (DATALINK) SWITCH	EACH	1
VIDEO ENCODER	EACH	1
SERVICE INSTALLATION - POLE MOUNTED	EACH	1
UNINTERRUPTIBLE POWER SUPPLY	EACH	1
ELECTRIC CABLE IN CONDUIT, GROUNDING NO. 6 1C	FOOT	718



I.D.O.T. TRAFFIC SIGNAL INSTALLATION ELECTRICAL SERVICE REQUIREMENTS

TYPE	NO. OF LAMPS	WATTAGE	% OPERATION	TOTAL WATTAGE
SIGNAL (RED)	20	17	0.50	170.00
(YELLOW)	20	25	0.25	125.00
(GREEN)	20	15	0.25	75.00
ARROW	24	12	0.10	28.80
PED. SIGNAL	-	25	1.00	-
CONTROLLER	1	100	1.00	100.00
L.E.D. ST. NAME SIGN	4	64	0.50	128.00
VIDEO SYSTEM	1	150	1.00	150.00
BATTERY BACK UP SYSTEM	1	25	1.00	25.00
FLASHER	-	0.50	-	-
ENERGY COSTS TO:		TOTAL =		801.80

ILLINOIS DEPARTMENT OF TRANSPORTATION
 DIVISION OF HIGHWAY/DISTRICT 1
 201 WEST CENTER COURT/SCHAUMBURG, ILLINOIS 60196-1096
 ENERGY SUPPLY: CONTACT: KIM KANGAS
 PHONE: (847) 816-5497
 COMPANY: COMED

CABLE PLAN

STATE OF ILLINOIS
DEPARTMENT OF TRANSPORTATION

FILE NAME	USER NAME	DESIGNED	REVISED	SCHEDULE OF QUANTITIES, CABLE PLAN AND PHASE DESIGNATION DIAGRAM	F.A.U. RTE.	SECTION	COUNTY	TOTAL SHEETS	SHEET NO.
IN:\LCD01\042297\Prof\1e\035_LAB_0-nba\cable.plan	nmorej	-	-	IL RTE. 131 (GREEN BAY ROAD) AT WADSWORTH ROAD LAKE COUNTY, ILLINOIS	1209	03-00033-12-CH	LAKE	189	119
		DATE	REVISED	SCALE:	SHEET NO.	OF SHEETS	STA.	TO STA.	FED. ROAD DIST. NO. 1 ILLINOIS FED. AID PROJECT