

PROJECT Wadsworth Road at IL Route 131, Lake County, Illinois

CLIENT Christopher B. Burke Engineering, Ltd., Rosemont, Illinois

BORING HA1 DATE STARTED 8-4-05 DATE COMPLETED 8-4-05 JOB L-62,012



ELEVATIONS

GROUND SURFACE 705.5

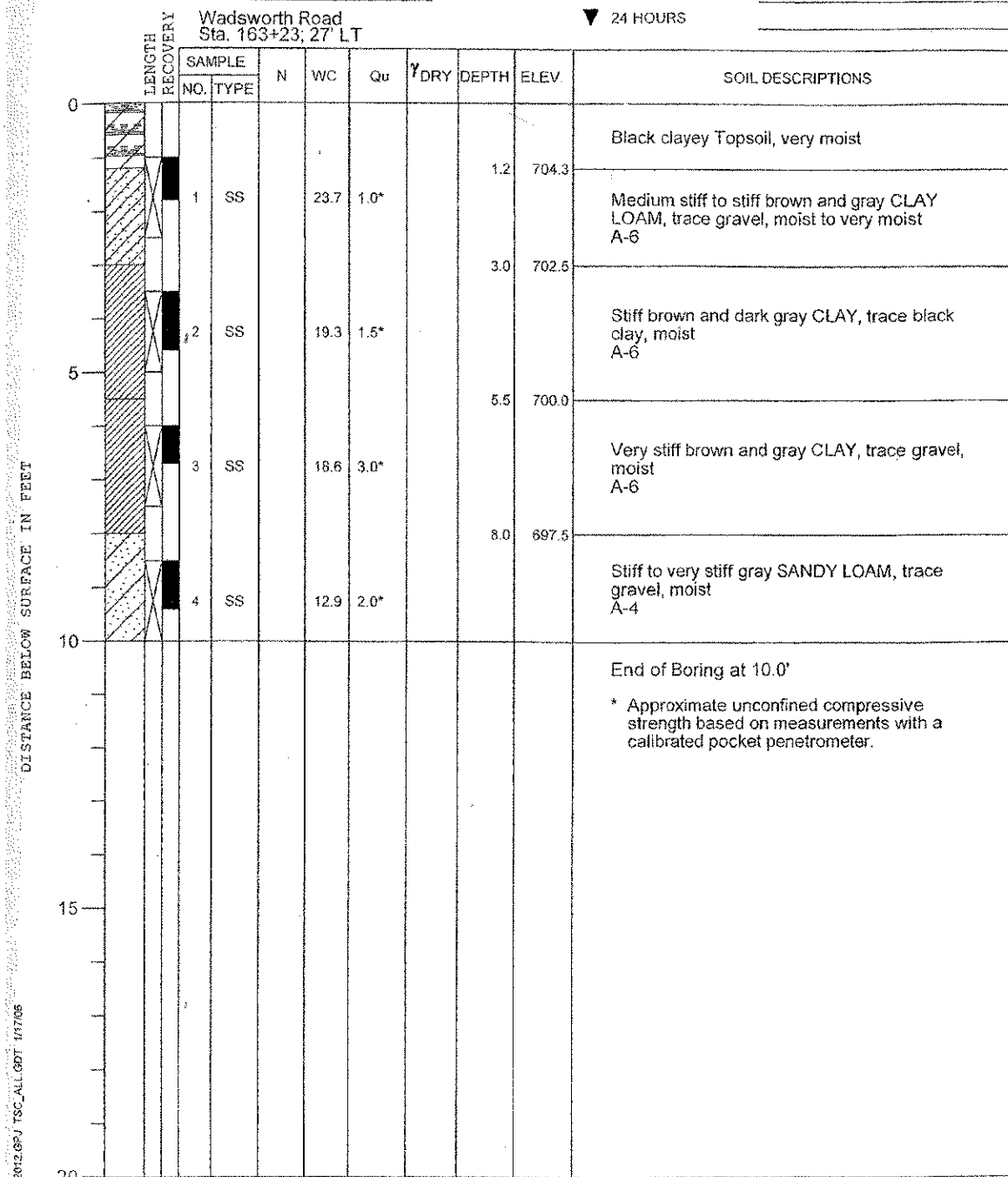
END OF BORING 695.5

WATER LEVEL OBSERVATIONS

▽ WHILE DRILLING Surface

▽ AT END OF BORING Surface

▽ 24 HOURS



TSC 62012.GPJ TSC_ALL.GDT 1/17/06

DRILL RIG NO. HA

Division lines between deposits represent approximate boundaries between soil types; in-situ, the transition may be gradual.

PROJECT Wadsworth Road at IL Route 131, Lake County, Illinois

CLIENT Christopher B. Burke Engineering, Ltd., Rosemont, Illinois

BORING HA2 DATE STARTED 8-4-05 DATE COMPLETED 8-4-05 JOB L-62,012



ELEVATIONS

GROUND SURFACE 706.0

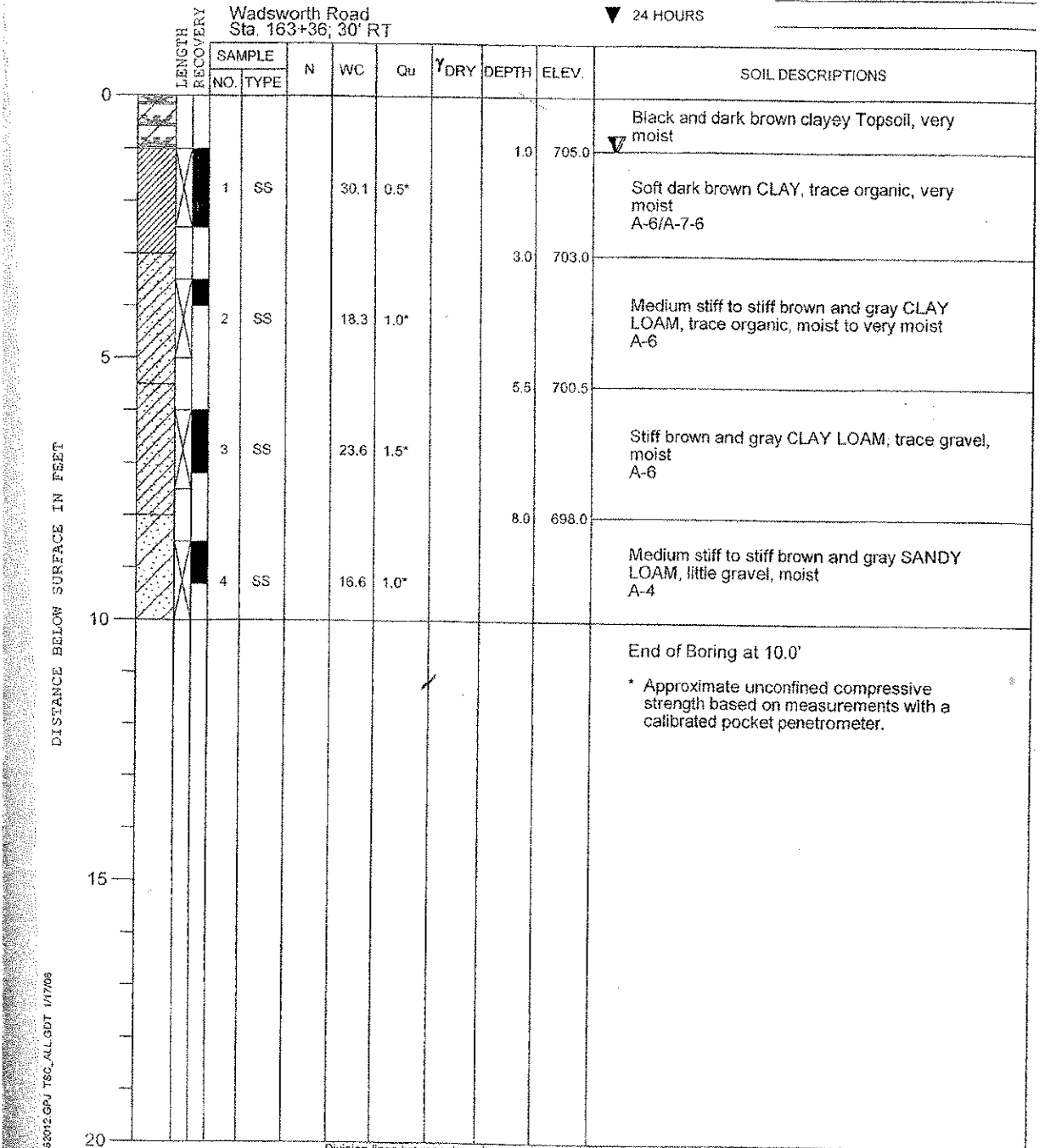
END OF BORING 696.0

WATER LEVEL OBSERVATIONS

▽ WHILE DRILLING 1.0'

▽ AT END OF BORING 1.0'

▽ 24 HOURS



TSC 62012.GPJ TSC_ALL.GDT 1/17/06

DRILL RIG NO. HA

Division lines between deposits represent approximate boundaries between soil types; in-situ, the transition may be gradual.