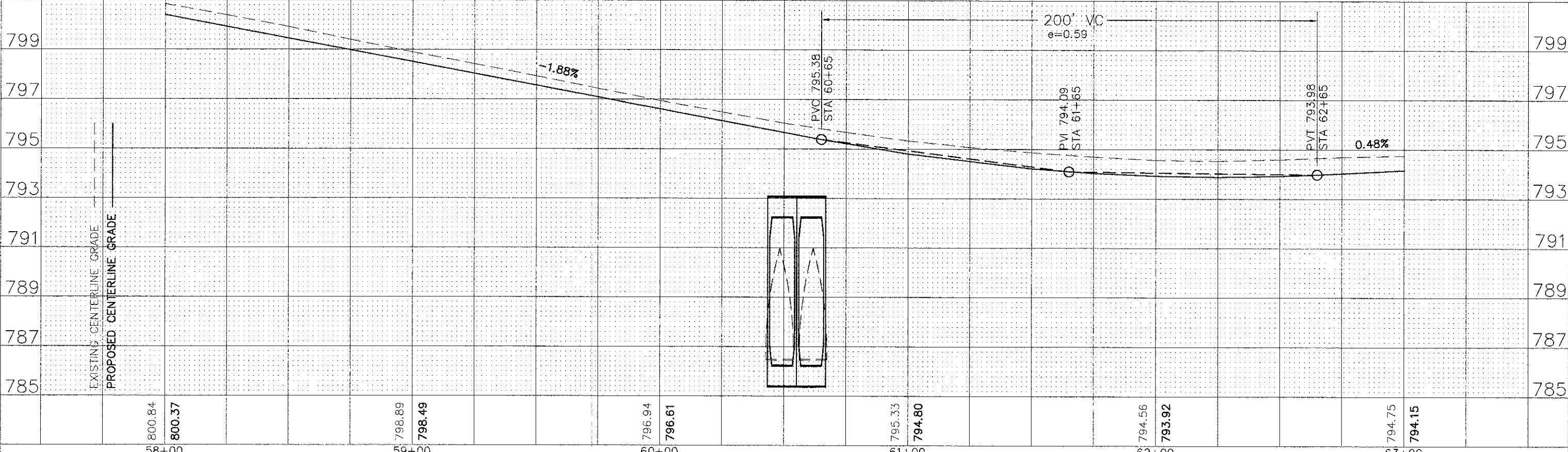
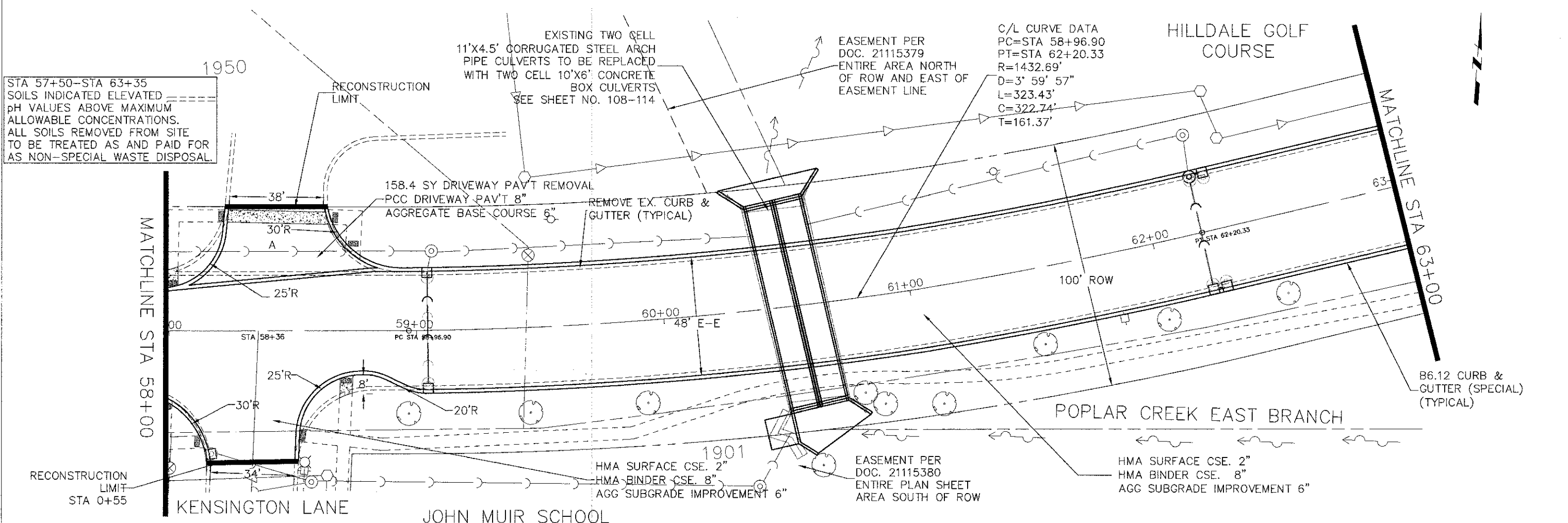


PLAN	DATE	BY
REVISED		
PLOTTED		
NOTE BOOK		
NO.		

PROFILE	DATE	BY
REVISED		
PLOTTED		
NOTE BOOK		
NO.		

STA 57+50-STA 63+35  
SOILS INDICATED ELEVATED  
pH VALUES ABOVE MAXIMUM  
ALLOWABLE CONCENTRATIONS.  
ALL SOILS REMOVED FROM SITE  
TO BE TREATED AS AND PAID FOR  
AS NON-SPECIAL WASTE DISPOSAL.



FILE NAME = Hassell Plan-Profile.dwg	DESIGNED -	REVISED -	<b>STATE OF ILLINOIS DEPARTMENT OF TRANSPORTATION</b>	Hassell Road STP Project Plan and Profile		F.A.U. RTE.	SECTION	COUNTY	TOTAL SHEETS	SHEET NO.	
	DRAWN -	REVISED -		SCALE: 1" = 20'	SHEET NO. 11 OF 16 SHEETS	STA. 58+00 TO STA 63+00	1100	11-00087-00-FP	Cook	164	25
	CHECKED -	REVISED -									
	DATE -	REVISED -									

ILLINOIS FED. AID PROJECT CMM 9003(757)