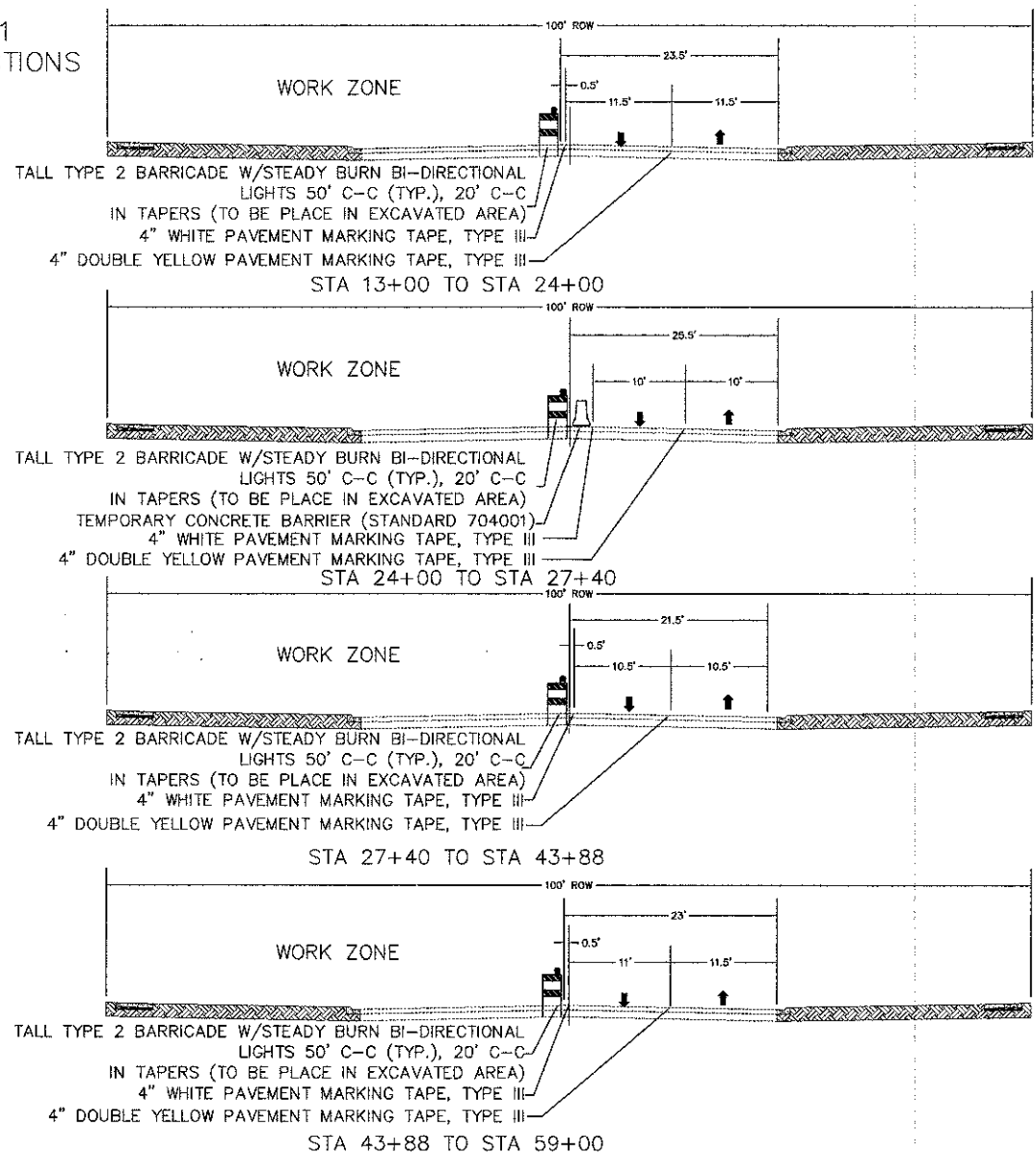
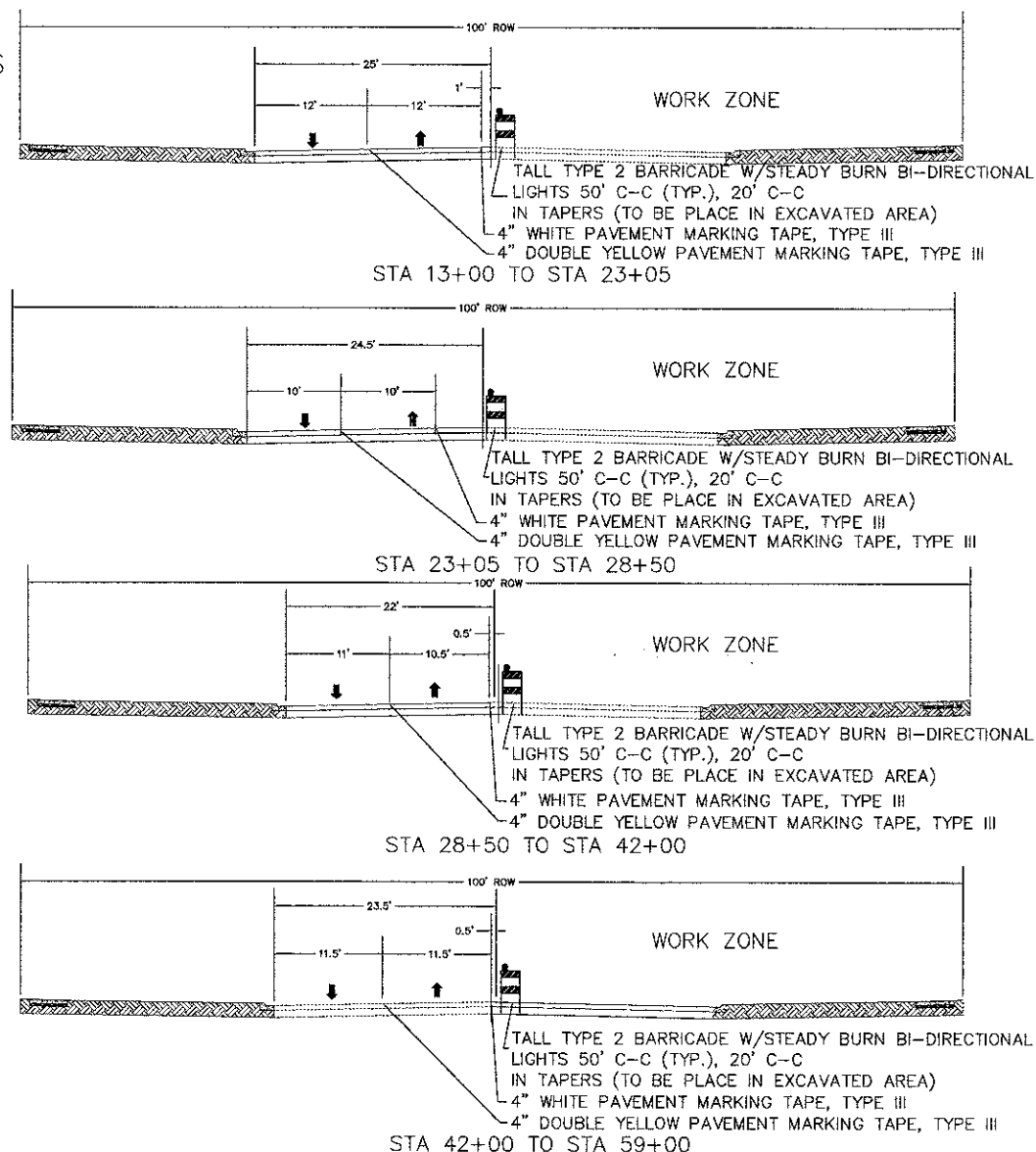


STAGE 1
TYPICAL SECTIONS



1. ESTABLISH TWO-WAY, TWO LANE TRAFFIC FLOW ALONG THE SOUTH SIDE OF HASSELL ROAD AS SHOWN ON THE PLANS.
2. CLOSE OUTER LEFT TURN LANE ON SOUTHBOUND BARRINGTON ROAD ACCORDING TO DISTRICT DETAIL TC-14.
3. REMOVE THE EXISTING PAVEMENT AND CURB AND GUTTER ALONG THE NORTH SIDE OF HASSELL ROAD.
4. CONSTRUCT NORTH SIDE STORM SEWER LATERALS AND DRAINAGE STRUCTURES. PROVIDE TEMPORARY CONNECTIONS TO EXISTING SEWER.
5. CONSTRUCT COMBINATION CONCRETE CURB AND GUTTER AND WESTBOUND PAVEMENT AS SHOWN ON THE PLANS.
6. CONSTRUCT PAVEMENT AT AREAS OF CURB BUMP-OUTS, AS SHOWN ON THE PLANS. COMPLETE FINAL COMBINATION CONCRETE CURB AND GUTTER AND WESTBOUND PAVEMENT AFTER COMPLETION OF STAGE 2.
7. COMPLETE PERMANENT LANDSCAPE RESTORATION.

STAGE 2
TYPICAL SECTIONS



1. ESTABLISH TWO-WAY, TWO LANE TRAFFIC FLOW ALONG THE NORTH SIDE OF HASSELL ROAD AS SHOWN ON THE PLANS.
2. CLOSE OUTER LEFT TURN LANE ON SOUTHBOUND BARRINGTON ROAD ACCORDING TO DISTRICT DETAIL TC-14.
3. REMOVE THE EXISTING PAVEMENT AND CURB AND GUTTER ALONG THE SOUTH SIDE OF HASSELL ROAD.
4. CONSTRUCT SIDE SIDE STORM SEWER LATERALS AND DRAINAGE STRUCTURES.
5. CONSTRUCT COMBINATION CONCRETE CURB AND GUTTER AND EASTBOUND PAVEMENT AS SHOWN ON THE PLANS.
6. REMOVE TEMPORARY STRIPING ON NORTH SIDE OF PAVEMENT. RESTORE TWO-WAY FOUR LANE TRAFFIC TO HASSELL ROAD FROM STATION 13+00 TO STATION 59+00 WITH TEMPORARY PAVEMENT MARKING - LINE, 4".
7. REMOVE PAVEMENT AND CONSTRUCT CURB BUMP-OUT AREAS ON WESTBOUND PAVEMENT.
8. COMPLETE PERMANENT LANDSCAPE RESTORATION.

GENERAL NOTES:

1. STAGING PROCEDURES PRESENTED ARE THE SUGGESTED SEQUENCE OF OPERATIONS. THE CONTRACTOR MAY SUBMIT AN ALTERNATIVE STAGING PROPOSAL TO THE ENGINEER FOR APPROVAL. THE CONTRACTOR SHALL NOT BE ENTITLED TO ADDITIONAL COMPENSATION FOR CHANGE IN STAGING.
2. STAGE 3 SHALL CONSIST OF WORK FROM STATION 59+00 TO STATION 73+50. STAGE 4 SHALL CONSIST OF WORK FROM STATION 73+50 TO STATION 88+50. DETOUR ROUTES, AS SHOWN IN THE PLANS, SHALL BE IN PLACE DURING THOSE STAGES OF WORK.
3. THE CONTRACTOR SHALL MAINTAIN A MINIMUM ONE 10 FOOT LANE IN EACH DIRECTION FOR TWO-WAY, TWO LANE TRAFFIC. INGRESS AND EGRESS OF THE SIDE STREETS AND DRIVEWAYS SHALL BE MAINTAINED AT ALL TIMES.
4. THE CONTRACTOR SHALL MAINTAIN TRAFFIC IN ACCORDANCE WITH THE SPECIAL PROVISIONS, DETAILS, STATE STANDARDS, STANDARD SPECIFICATIONS AND AS DIRECTED BY THE ENGINEER. ALL COSTS ASSOCIATED WITH SHALL BE INCLUDED IN THE COST FOR TRAFFIC CONTROL AND PROTECTION (SPECIAL).
5. THE ENGINEER SHALL BE INFORMED 72 HOURS IN ADVANCE OF ANY CHANGE IN CONSTRUCTION STAGING.
6. THE CONTRACTOR SHALL BE REQUIRED TO REMOVE ALL EXISTING PAVEMENT MARKINGS WHICH CONFLICT WITH THE DESIGNATED TRAFFIC CONTROL PLAN. THIS WORK SHALL BE PAID FOR AS PAVEMENT MARKING REMOVAL OR WORK ZONE PAVEMENT MARKING REMOVAL.
7. ACCESS TO ALL BUSINESSES MUST BE MAINTAINED AT ALL TIMES. DRIVEWAY CONSTRUCTION WORK SHALL BE STAGED TO ALLOW ACCESS. ENTRANCE SIGNS SHALL BE PLACED AT ALL DRIVEWAY ENTRANCES, AS SPECIFIED BY THE ENGINEER. DRIVEWAY ENTRANCE SIGNS SHALL BE IN ACCORDANCE WITH THE DRIVEWAY ENTRANCE SIGNAGE DETAIL.
8. THE FURNISHING, INSTALLING, AND RELOCATION OF ALL TRAFFIC SIGNS SHALL BE IN ACCORDANCE WITH THE MANUAL ON UNIFORM TRAFFIC CONTROL DEVICES AND THE STANDARD SPECIFICATIONS. ALL CONFLICTING TRAFFIC SIGNS SHALL BE COVERED AS DIRECTED BY THE ENGINEER. THE WORK SHALL BE INCLUDED IN THE COST OF TRAFFIC CONTROL AND PROTECTION WHEN NOT SPECIFICALLY SHOWN ON THE STRIPING AND SIGNAGE PLANS.
9. THE CONTRACTOR SHALL NOT MOUNT TEMPORARY SIGNS ON EXISTING SIGNS.
10. THE CONTRACTOR SHALL BE RESPONSIBLE FOR ENSURING THAT ALL BARRICADES, SIGNS, LIGHTS, AND OTHER DEVICES INSTALLED ARE IN PLACE AND OPERATION 24 HOURS EACH DAY INCLUDING SUNDAYS AND HOLIDAYS DURING THE TIME THE TRAFFIC CONTROL PLAN IS IN EFFECT.
11. THE DETOUR PLAN SHALL BE IN PLACE FOR THE DURATION OF STAGE 3 AND STAGE 4 CONSTRUCTION ONLY.
12. ANY TEMPORARY PIPE CONNECTIONS NEEDED FOR STAGING OF STORM SEWER IMPROVEMENTS SHALL BE CONSIDERED INCLUDED IN THE APPLICABLE PAY ITEMS FOR STORM SEWER
13. DURING STAGE 3, ACCESS TO THE HOFFMAN ESTATES VILLAGE HALL SHALL BE MAINTAINED AT ALL TIMES VIA HUNTINGTON BOULEVARD.
14. DURING STAGE 3 AND STAGE 4, ONE ACCESS POINT TO PARKVIEW CIRCLE MUST BE MAINTAINED AT ALL TIMES.