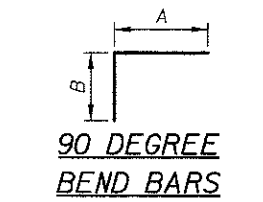
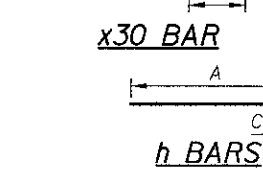
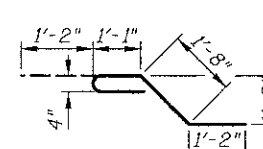


FOR INFORMATION ONLY

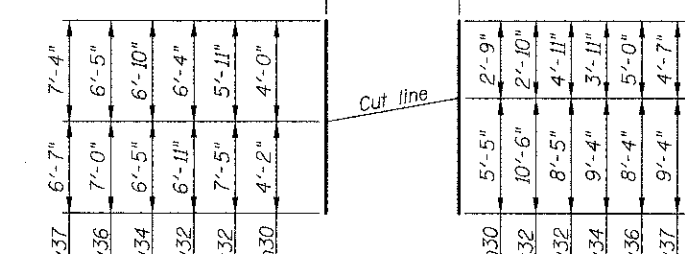
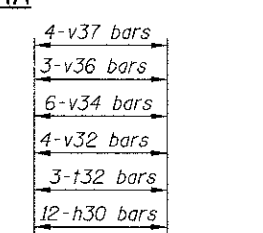
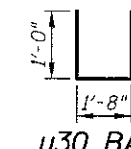
Bar	No.	Size	Length	Shape
a30	22	#6	24'-7"	┌
a31	22	#6	23'-3"	┌
b30	16	#4	16'-2"	—
b31	1	#4	24'-9"	—
b32	1	#4	19'-11"	—
b33	1	#4	15'-6"	—
b34	1	#4	27'-6"	—
d30	24	#4	4'-6"	└
d31	24	#4	4'-0"	└
h30	36	#5	8'-2"	—
h31	4	#4	25'-11"	┌
h32	4	#4	23'-11"	┌
h33	10	#4	22'-4"	┌
h34	10	#4	22'-0"	┌
h35	5	#4	9'-6"	—
h36	10	#4	10'-2"	—
h37	7	#5	5'-11"	—
h38	7	#5	5'-5"	—
h39	14	#5	3'-7"	—
h40	14	#5	4'-1"	—
h41	2	#4	11'-6"	—
h42	2	#4	9'-5"	—
n30(E)	34	#6	11'-8"	└
t30	18	#5	10'-9"	—
t31	30	#5	12'-9"	—
t32	3	#5	13'-4"	—
t33	7	#5	10'-2"	—
t34	7	#5	8'-0"	—
t35	7	#5	14'-0"	—
u30	7	#4	3'-8"	U
v30	16	#5	8'-6"	—
v31	17	#4	9'-6"	—
v32	4	#5	13'-4"	—
v33	1	#5	4'-5"	—
v34	5	#4	13'-3"	—
v35	14	#5	7'-4"	—
v36	3	#4	13'-4"	—
v37	4	#4	13'-11"	—
v38	4	#4	2'-0"	—
v39	1	#4	3'-10"	—
v40	1	#4	3'-3"	—
x30	70	#4	5'-1"	┌
x31	12	#4	18'-5"	┌
Item	Unit	Quantity		
Concrete Structures	Cu. Yd.	40.4		
Reinforcement Bars	Pound	4,830		
Reinforcement Bars, Epoxy Coated	Pound	600		



Bar	A	B
d30	2'-9"	1'-9"
d31	3'-4"	8"
n30(E)	6'-1"	5'-7"
x31	13'-2"	5'-3"



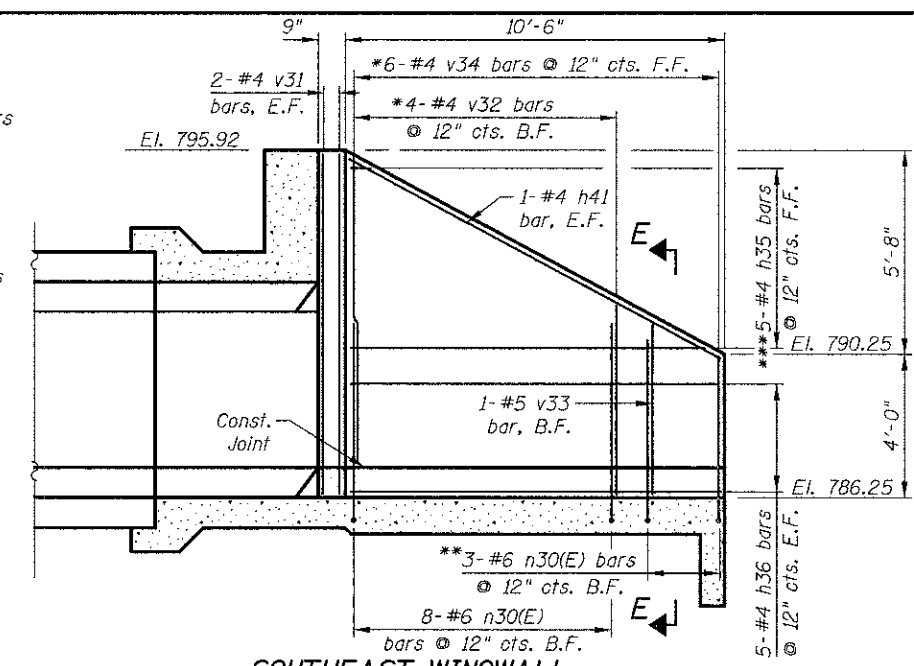
Bar	A	B	C
h33	14'-2"	8'-2"	5'-9 1/4"
h34	14'-0"	8'-0"	5'-7 3/8"
h37	5'-5"	6"	4 1/2"
h38	4'-9"	8"	6"



FIELD CUTTING DIAGRAM

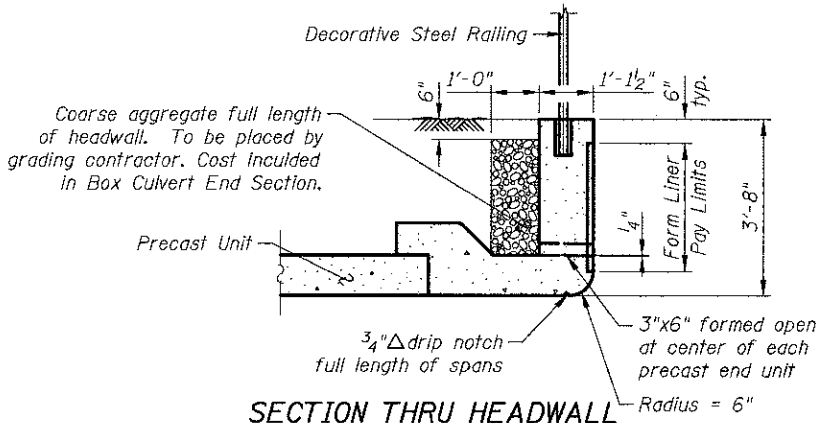
Item	Unit	Quantity
Aggregate Base Course, Type B 6"	Sq. Yd.	15
Portland Cement Concrete Pavement, 6"	Sq. Yd.	15
Box Culvert End Section, Culvert No. 1	Ea.	1
Form Liner Textured Surface, Special	Sq. Ft.	254

Note: Quantity of concrete structures and reinforcement bars is shown for information only. The cost is included in Box Culvert End Section, Culvert No. 1.

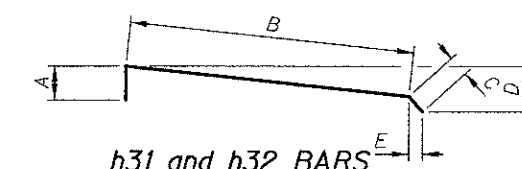


SOUTHEAST WINGWALL

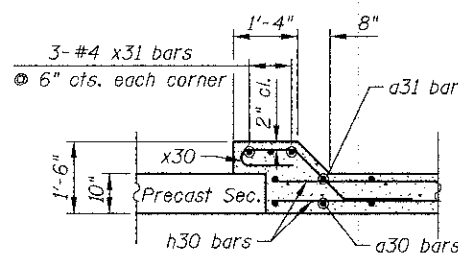
** Field cut as required
*** Cut bars to fit in field. Use remainder in back face of wingwall.



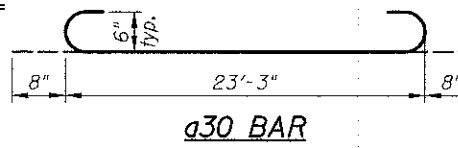
SECTION THRU HEADWALL (Upstream End)



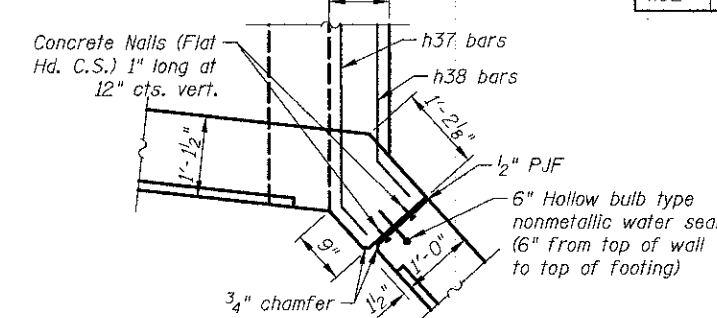
Bar	A	B	C	D	E
h31	1'-8"	23'-4"	0'-11"	3'-3 3/8"	7 3/8"
h32	0'-11"	22'-2"	0'-10"	3'-1"	6 5/8"



DETAIL "A"

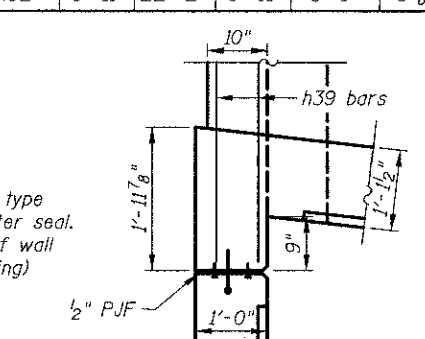


a30 BAR



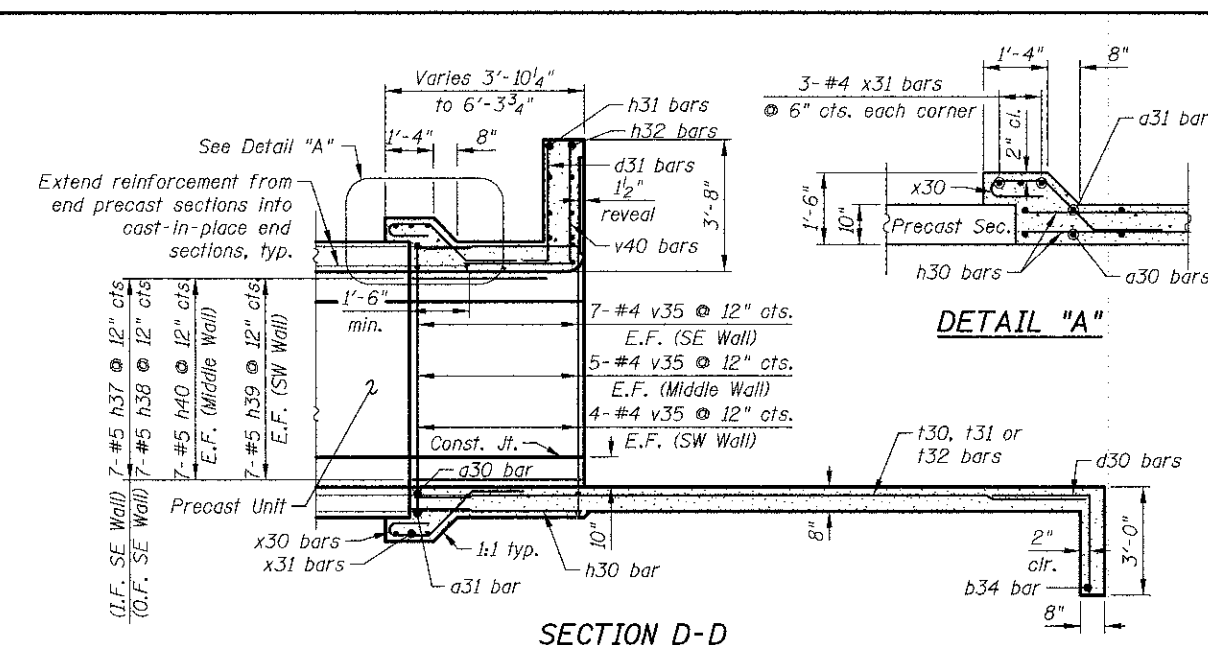
SOUTHEAST CORNER DETAIL

Water seal and concrete nails are cost included with Concrete Box Culvert End Section

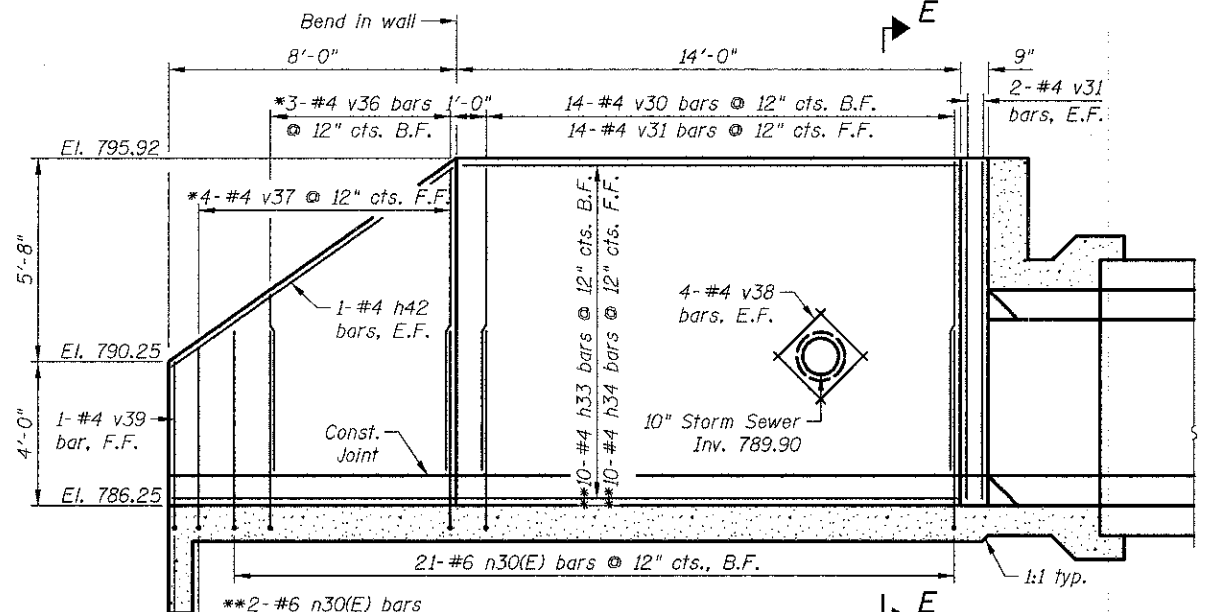


SOUTHWEST CORNER DETAIL

See SE corner for balance of information

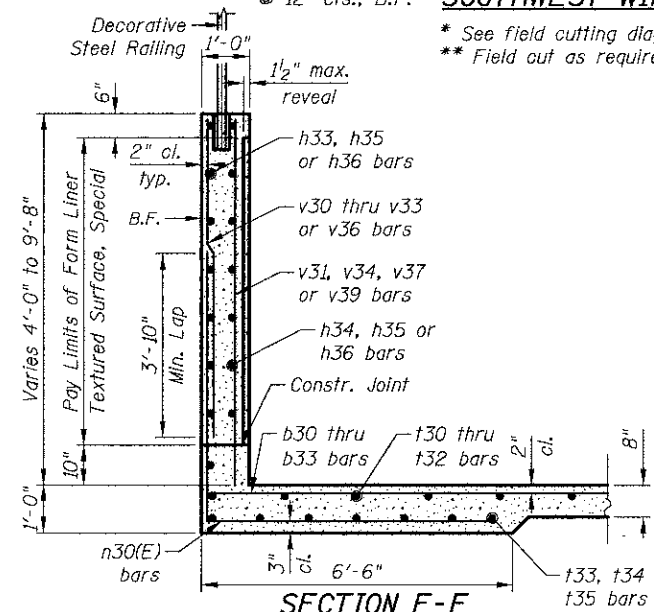


SECTION D-D



SOUTHWEST WINGWALL

* See field cutting diagram
** Field cut as required



SECTION E-E

11/2/2012 11:51 AM
 I:\244\road\016-6344\03_End Section_Details_south.dgn

CIVILTECH
 450 E Devon Ave, Suite 300
 Itasca, Illinois 60143
 Tel: 630.773.3900 Fax: 630.773.3975
 www.civiltechinc.com

DRAWN - M. LANGE	REVISED -
DESIGNED - D. ATKINS	REVISED -
CHECKED - G. HATLESTAD	REVISED -
DATE - DECEMBER 17, 2012	REVISED -

STATE OF ILLINOIS
DEPARTMENT OF TRANSPORTATION

SOUTH END SECTION DETAILS
HASSELL ROAD OVER POPLAR CREEK
STRUCTURE NO. 016-6344

F.A.I. RTE. 1100	SECTION 11-00087-00-FP	COUNTY COOK	TOTAL SHEETS 164	SHEET NO. 110
CONTRACT NO. 63170			ILLINOIS FED. AID PROJECT CMM 9003767	