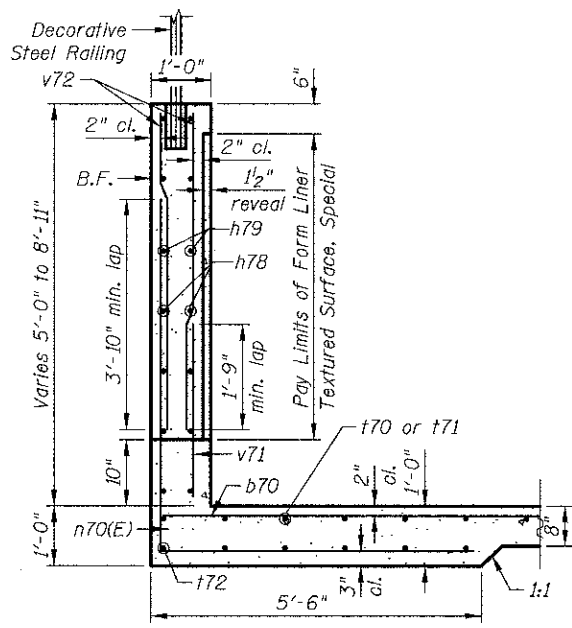
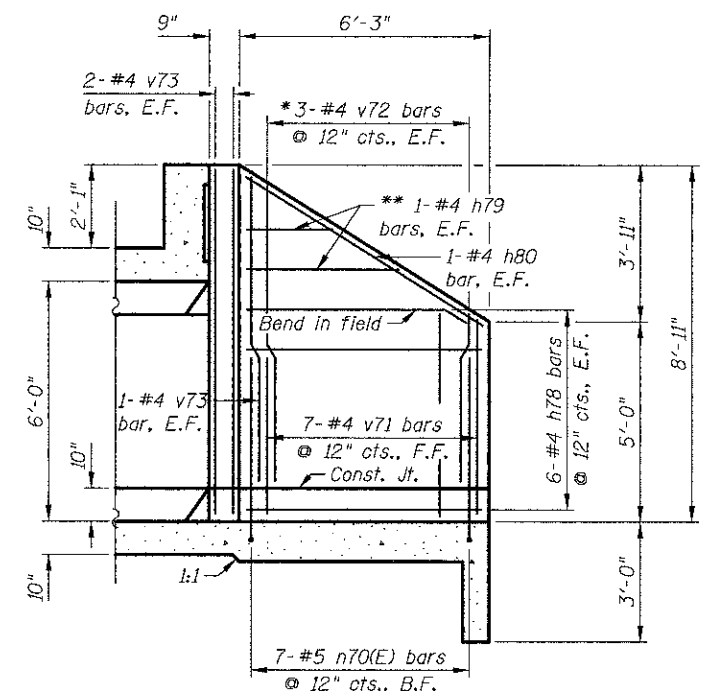


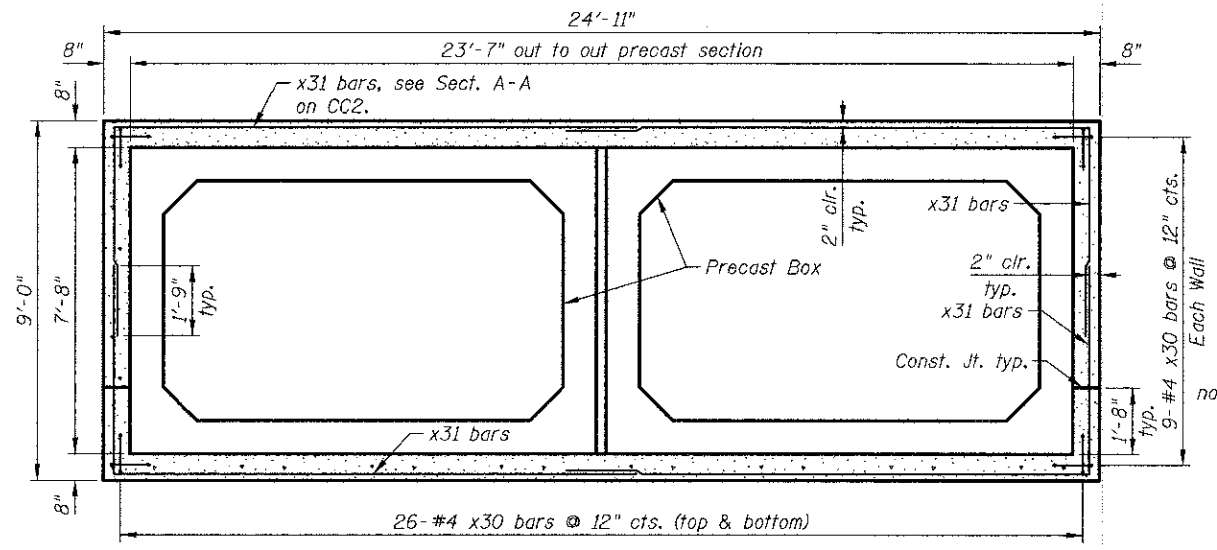
**SECTION C-C**



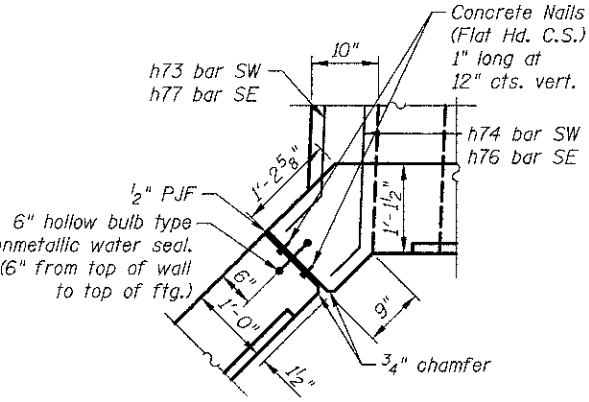
**SECTION B-B**



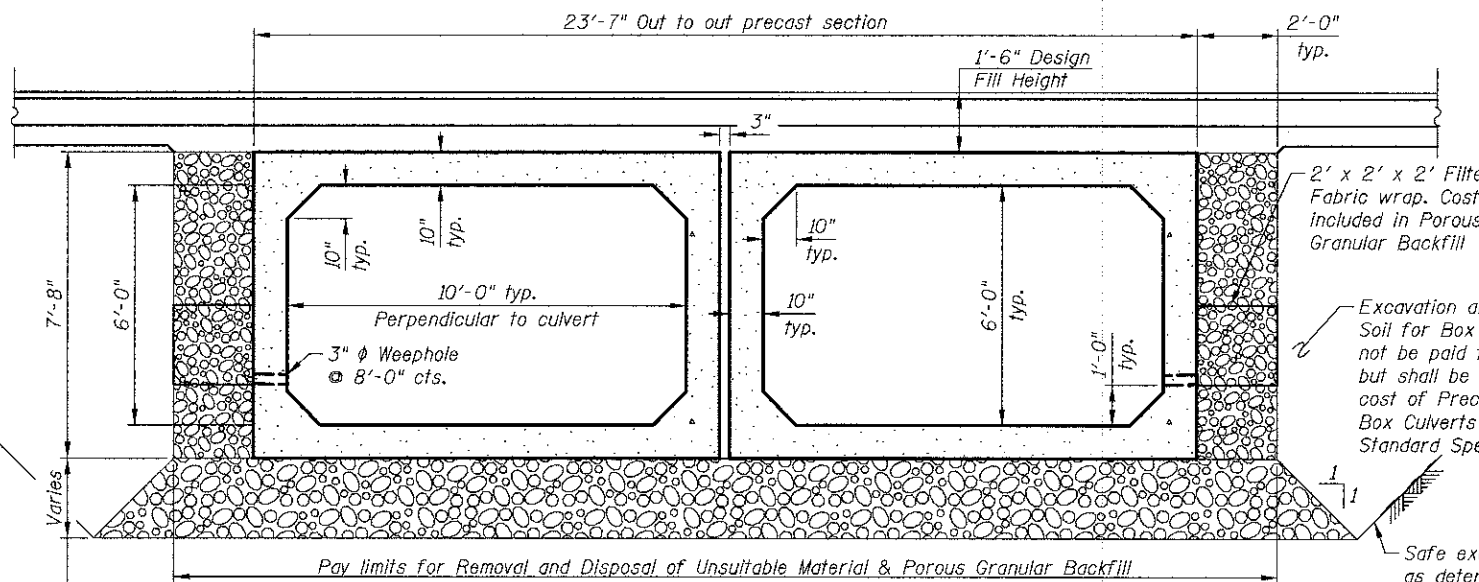
**WINGWALL ELEVATION**



**SECTION D-D**

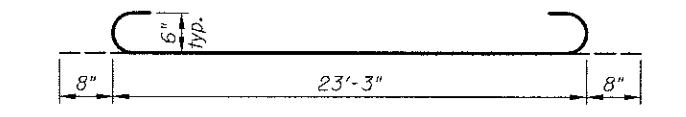


**CORNER DETAIL**



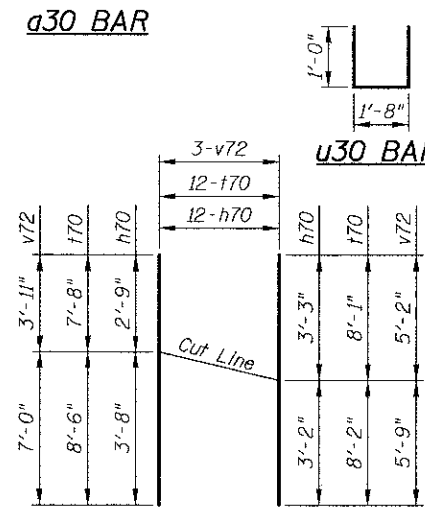
**SECTION THRU PRECAST BOX**

\* See Field Cutting Diagram.  
\*\* Order h79 bars full length. Cut and use remainder as designated.

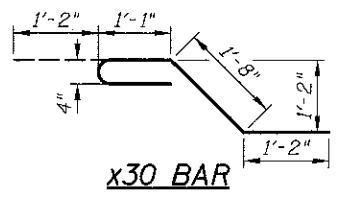


**90 DEGREE BEND BARS**

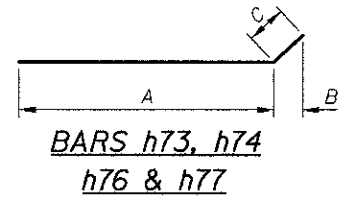
Bar	A	B
d30	2'-9"	1'-9"
d70	2'-7"	8"
n70(E)	5'-7"	5'-1"
x31	13'-2"	5'-3"



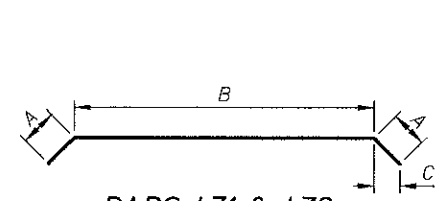
**FIELD CUTTING DIAGRAM**



**x30 BAR**



Bar	A	B	C
h73	3'-1"	5' <sup>7</sup> / <sub>8</sub> "	8"
h74	3'-9"	5' <sup>6</sup> / <sub>8</sub> "	7"
h76	2'-11"	4' <sup>3</sup> / <sub>4</sub> "	7"
h77	2'-4"	4' <sup>3</sup> / <sub>4</sub> "	7"



Bar	A	B	C
h71	10"	21'-10"	7' <sup>6</sup> / <sub>8</sub> "
h72	1'-0"	22'-9"	8' <sup>1</sup> / <sub>2</sub> "

**FOR INFORMATION ONLY**

Bar	No.	Size	Length	Shape
a30	16	#6	24'-7"	└─┘
a31	16	#6	23'-3"	└─┘
b70	10	#4	16'-11"	└─┘
d30	32	#4	4'-6"	└─┘
d70	24	#4	3'-3"	└─┘
h70	36	#5	6'-5"	└─┘
h71	3	#4	23'-6"	└─┘
h72	3	#4	24'-9"	└─┘
h73	7	#5	3'-9"	└─┘
h74	7	#5	4'-4"	└─┘
h75	14	#5	3'-2"	└─┘
h76	7	#5	3'-6"	└─┘
h77	7	#5	2'-11"	└─┘
h78	24	#4	5'-11"	└─┘
h79	4	#4	6'-3"	└─┘
h80	4	#4	7'-0"	└─┘
n70(E)	14	#6	10'-8"	└─┘
i70	12	#5	16'-2"	└─┘
i71	4	#5	6'-2"	└─┘
i72	12	#5	5'-11"	└─┘
u30	7	#4	3'-8"	└─┘
v35	28	#4	7'-4"	└─┘
v71	14	#4	2'-9"	└─┘
v72	12	#4	10'-11"	└─┘
v73	12	#4	8'-7"	└─┘
v74	23	#4	2'-7"	└─┘
x30	70	#4	5'-1"	└─┘
x31	12	#4	18'-5"	└─┘
Item	Unit	Quantity		
Concrete Structures	Cu. Yd.	23.1		
Reinforcement Bars	Pound	3,100		
Reinforcement Bars, Epoxy Coated	Pound	230		

**MINIMUM BAR LAP**

#4 bar = 1'-9"  
#6(E) bar = 3'-10"

Note: Quantity of concrete structures and reinforcement bars is shown for information only. The cost is included in Box Culvert End Section, Culvert No. 2.

**BILL OF MATERIAL**

Item	Unit	Quantity
Box Culvert End Section, Culvert No. 2	Ea.	1
Form Liner Textured Surface, Special	Sq. Ft.	99

11/30/2012 12:12/12/2012 J:\2441\wood\016-6343\03.S End Details.dgn

**CIVILTECH**  
450 E Devon Ave, Suite 300  
Itasca, Illinois 60143  
Tel: 630.773.3900 Fax: 630.773.3975  
www.civiltechinc.com

DRAWN - J. SCHROEDER  
DESIGNED - D. ATKINS  
CHECKED - G. HATLESTAD  
DATE - DECEMBER 17, 2012

REVISED -  
REVISED -  
REVISED -  
REVISED -

**STATE OF ILLINOIS  
DEPARTMENT OF TRANSPORTATION**

**SOUTH END SECTION DETAILS  
HASSELL ROAD OVER POPLAR CREEK  
STRUCTURE NO. 016-6343**

SHEET NO. CC3 OF CC7 SHEETS

F.A.I. RTE.	SECTION	COUNTY	TOTAL SHEETS	SHEET NO.
1100	11-00087-00-FP	COOK	164	117
<b>CONTRACT NO. 63770</b>				
ILLINOIS FED. AID PROJECT CMM 90031(757)				