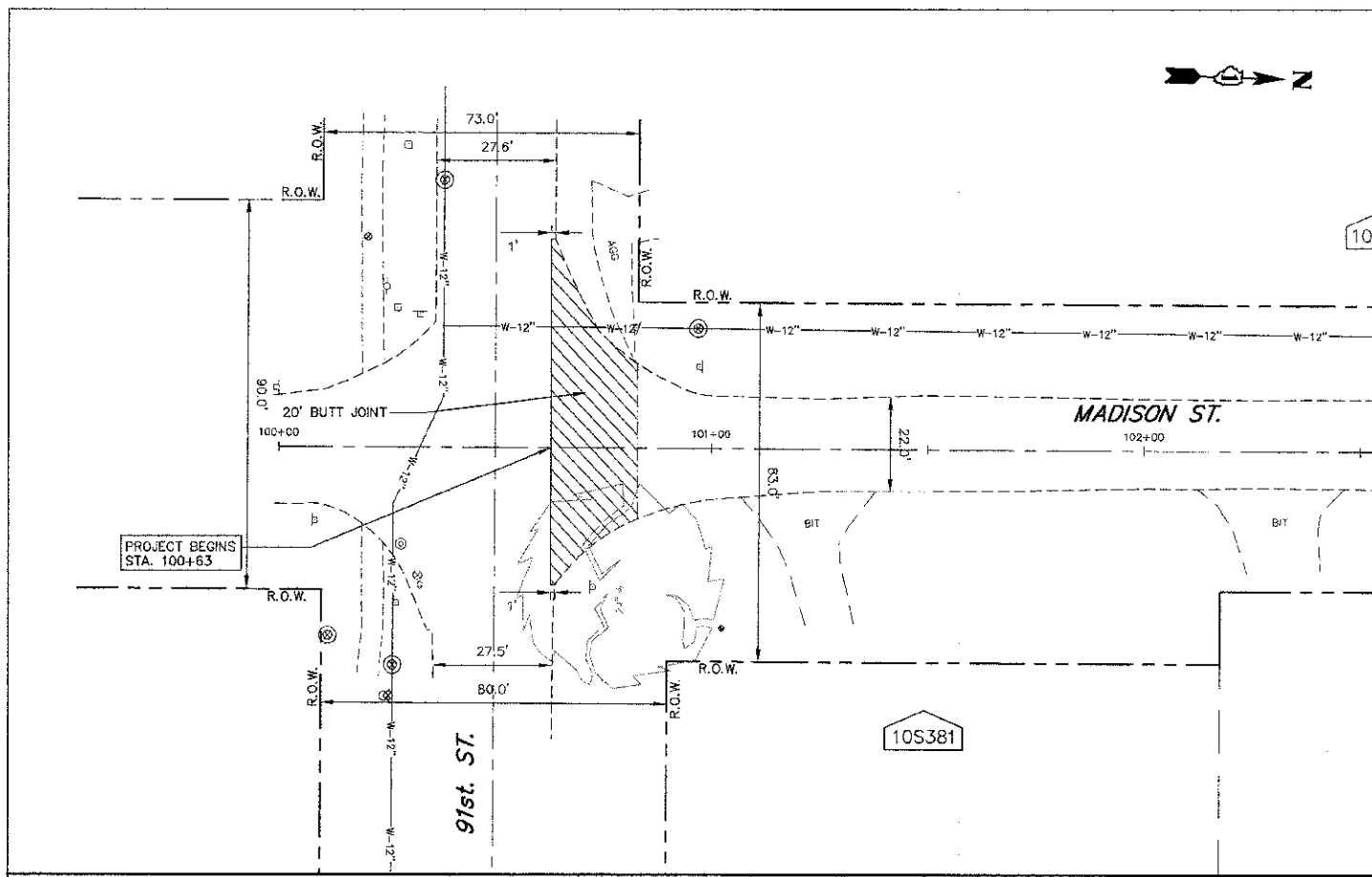


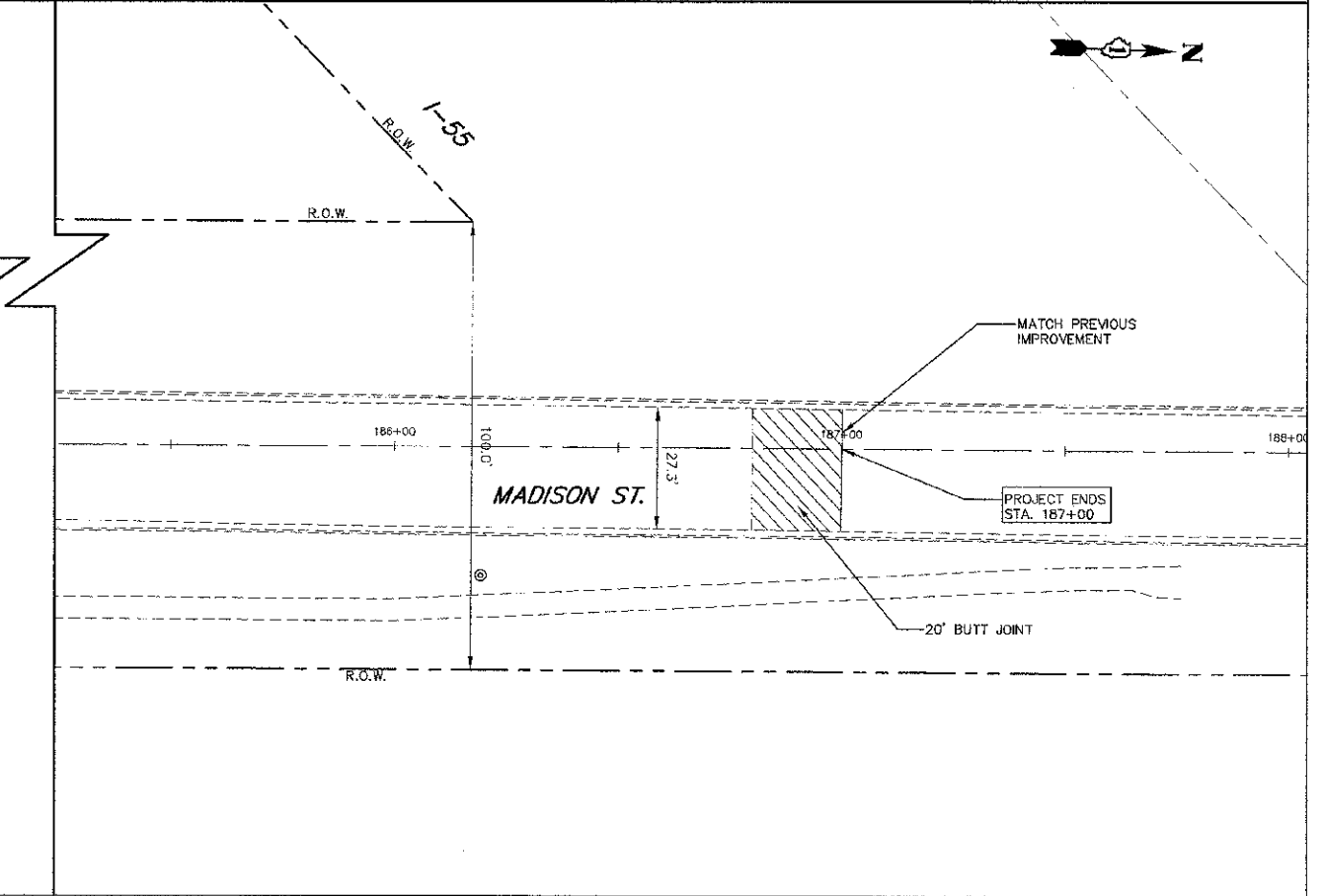
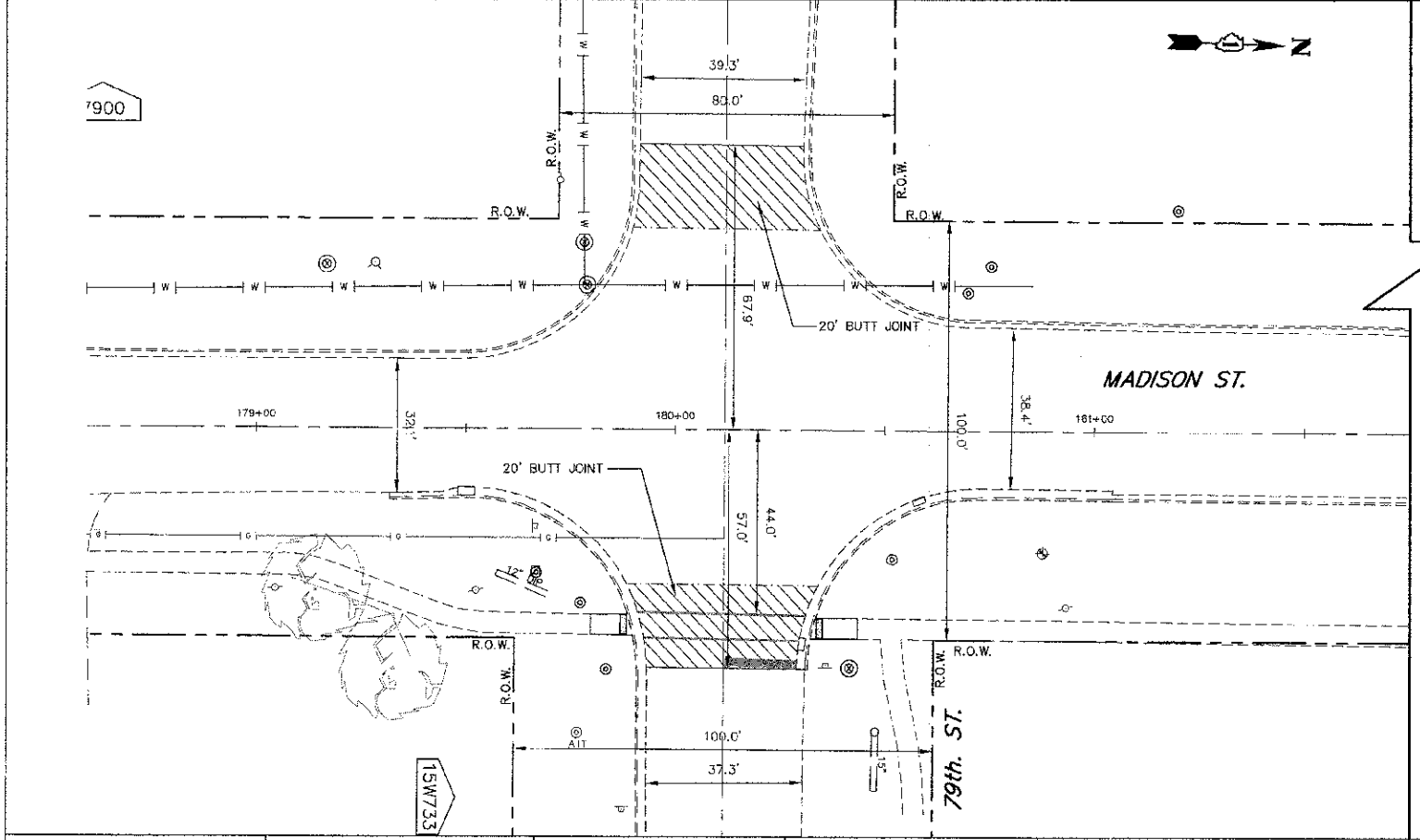
DATE	
BY	
REVISIONS	
NO.	
DATE	
BY	
REVISIONS	
NO.	
DATE	
BY	
REVISIONS	
NO.	
DATE	
BY	
REVISIONS	
NO.	

DATE	
BY	
REVISIONS	
NO.	
DATE	
BY	
REVISIONS	
NO.	
DATE	
BY	
REVISIONS	
NO.	



**SEGMENT A**  
 FAU 2674 (MADISON STREET)  
 STA. 100+63 TO STA. 187+00

TYPICAL SECTION STA. 100+63 TO STA. 187+00 MILL  
 2 1/4" OF THE EXISTING HMA AND  
 REPLACE WITH 3/4" HMA POLYMERIZED LEVEL BINDER,  
 MACHINE METHOD, N50 AND 1 1/2" HMA  
 SURFACE COURSE, MIX "D", N50



**ENGINEERING**  
**RFSOURCE**  
**ASSOCIATES, INC.**  
 CONSULTING ENGINEERS, SCIENTISTS  
 & SURVEYORS

USER NAME	clonner	DESIGNED	BD	REVISED	
FILE NAME	V:\00-1846\120701 Madison St.dwg	DRAWN	BT	REVISED	
PLOT SCALE	1"=20'	CHECKED	SW	REVISED	
PLOT DATE	12/14/2012	DATE	10-18-12	REVISED	

**STATE OF ILLINOIS**  
**DEPARTMENT OF TRANSPORTATION**

**TERMINI DETAILS**  
**MADISON STREET**

SCALE: 1"=20' SHEET NO. 1 OF 1 SHEETS STA. TO STA.

F.A.U. RTE.	SECTION	COUNTY	TOTAL SHEETS	SHEET NO.
2674	II-0045-00-RS	DUPAGE	20	3
CONTRACT NO. 63784				
FED. ROAD DIST. NO. ILLINOIS FED. AID PROJECT				