

03-08-13 LETTING ITEM 074

STATE OF ILLINOIS
DEPARTMENT OF TRANSPORTATION
DIVISION OF HIGHWAYS
**PLANS FOR PROPOSED
FEDERAL AID HIGHWAY**
FAU ROUTE 2674 (MADISON STREET)
FROM 91ST STREET TO 79TH STREET
PAVEMENT RESURFACING AND WIDENING
PROJECT No.: M-9003(869)
SECTION No.: 11-00045-00-RS
JOB No.: C-91-101-12
VILLAGE OF BURR RIDGE
DUPAGE COUNTY

F.A.J. RTE. 2674	SECTION 11-00045-00-RS	COUNTY DuPage	TOTAL SHEETS 20	SHEET NO. 1
CONTRACT NO.: 63784		ILLINOIS		

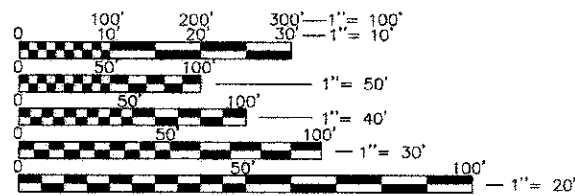


FOR INDEX OF STATE HIGHWAY STANDARDS
SEE SHEET NO. 2
PROJECT LOCATED IN THE VILLAGE OF BURR RIDGE

INDEX OF SHEETS

1. COVER SHEET, INDEX OF SHEETS, LOCATION MAP
2. GENERAL NOTES, SUMMARY OF QUANTITIES, SCHEDULES
3. TYPICAL SECTIONS
4. ALIGNMENT & TIES, BENCHMARKS
5. TERMINI DETAILS
- 6.-8. PLAN AND PROFILE SHEETS
- 9.-11. INTERSECTION DETAILS
- 12.-14. CROSS SECTIONS
15. DETAILS FOR FRAMES AND LIDS ADJUSTMENT WITH MILLING (BD-8)
16. PAVEMENT PATCHING FOR HMA SURFACED PAVEMENT (BD-22)
17. CURB AND GUTTER REMOVAL AND REPLACEMENT (BD-24)
18. BUTT JOINT AND HMA TAPER DETAILS (BD-32)
19. TRAFFIC CONTROL AND PROTECTION FOR SIDE ROADS, INTERSECTIONS, AND DRIVEWAYS (TC-10)
20. DISTRICT ONE TYPICAL PAVEMENT MARKINGS (TC-13)

DESIGN DESIGNATION = MAJOR COLLECTOR
TRAFFIC VOLUME ADT = 4,800 (2007)
POSTED SPEED = 35 MPH



FULL SIZE PLANS HAVE BEEN PREPARED USING STANDARD ENGINEERING SCALES. REDUCED SIZED PLANS WILL NOT CONFORM TO STANDARD SCALES. IN MAKING MEASUREMENTS ON REDUCED PLANS, THE ABOVE SCALES MAY BE USED.

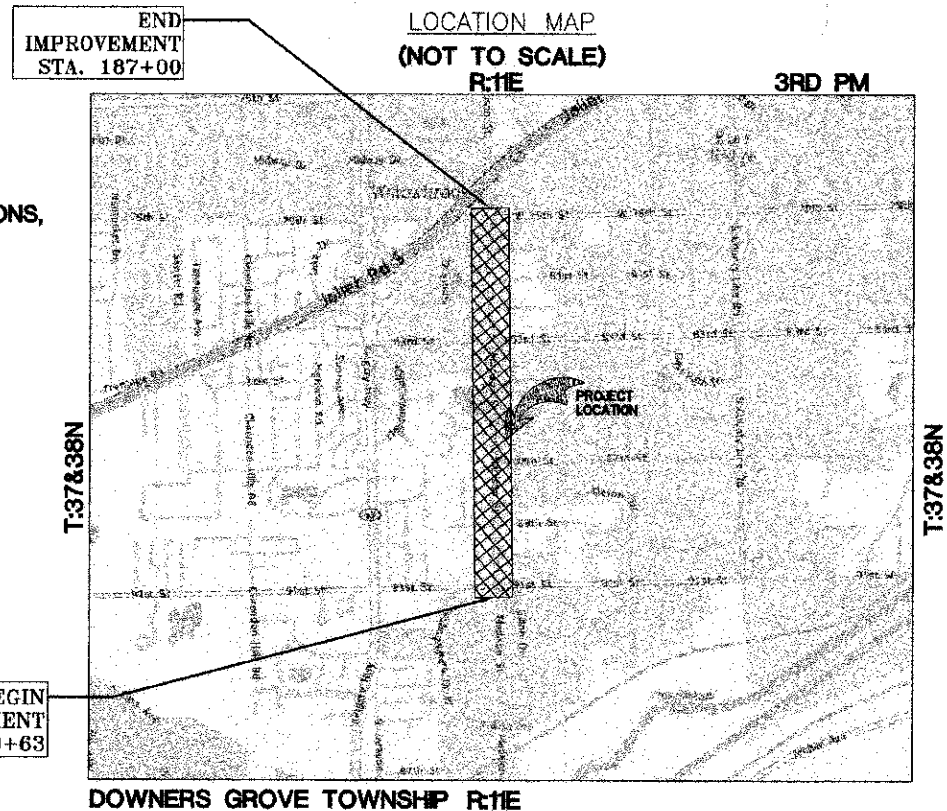
J.U.L.I.E.
JOINT UTILITY LOCATION INFORMATION FOR EXCAVATION
1-800-892-0123
OR 811

PROJECT MANAGER:
PROJECT ENGINEER:

CONTRACT NO. 63784



ENGINEERING RESOURCE ASSOC., INC.
CONSULTING ENGINEERS, SCIENTISTS & SURVEYORS
35701 WEST AVENUE, SUITE 150
WARRENVILLE, ILLINOIS 60555
PHONE (630) 393-3060 FAX (630) 393-2152
Professional Design Firm No. 184-001186
Expires April 30, 2013



BEGIN
IMPROVEMENT
STA. 100+63

END
IMPROVEMENT
STA. 187+00

DOWNER GROVE TOWNSHIP
GROSS LENGTH OF IMPROVEMENT = 8637 LF (1.64 MILES)
NET LENGTH OF IMPROVEMENT = 8637 LF (1.64 MILES)

STATE OF ILLINOIS
DEPARTMENT OF TRANSPORTATION
DIVISION OF HIGHWAYS

APPROVED PAUL D. MAY, P.E. 12/17/12
VILLAGE OF BURR RIDGE, VILLAGE ENGINEER

PASSED DECEMBER 31, 2012
C. HOLT
DISTRICT 1 ENGINEER OF LOCAL ROADS & STREETS

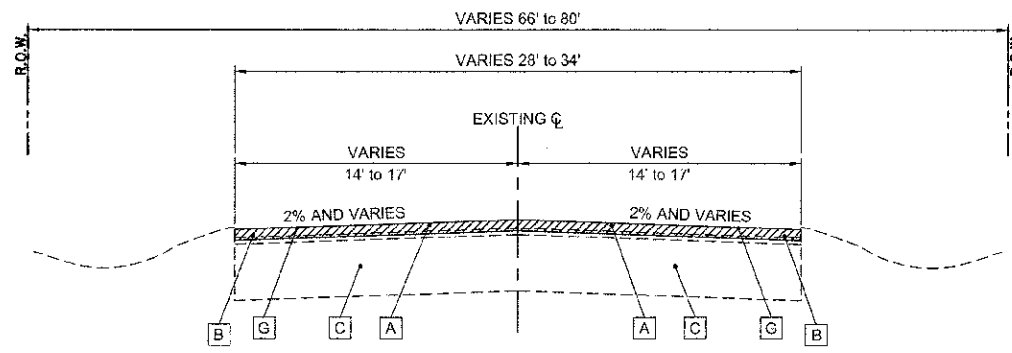
RELEASING FOR BID
BASED ON LIMITED
REVIEW JANUARY 2, 2013
[Signature]
DEPUTY DIRECTOR OF HIGHWAYS, REGION 1 ENGINEER

BY: [Signature] DATE: 12-17-12
LICENSE EXPIRES: NOV. 30, 2013

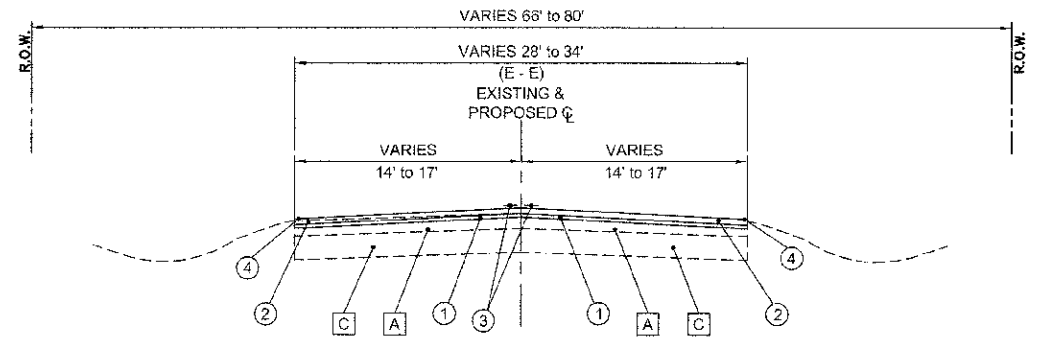
PRINTED BY THE AUTHORITY
OF THE STATE OF ILLINOIS

PROGRAM AND OFFICE ENGINEER: CHARLES F. RIDDLER, P.E. (847) 705-4406, SCHAUMBURG, IL

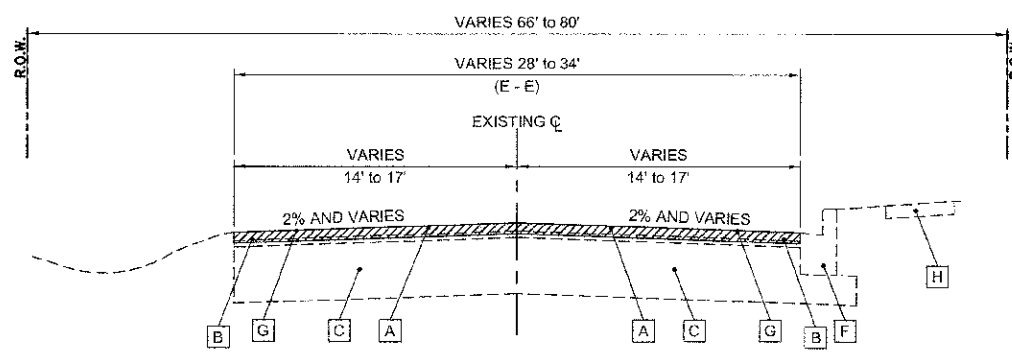
V:\Burr Ridge\120701.00 Modulen Street LAFD\CADD\120701 COVER.dwg Updated by: rstaner 12/14/2012



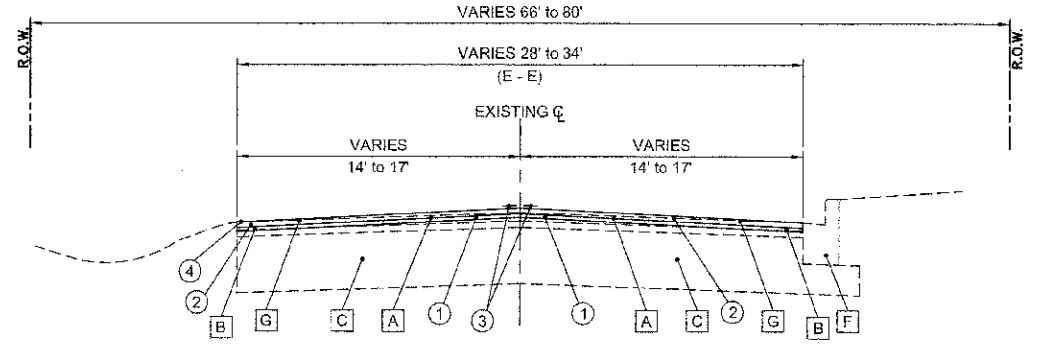
EXISTING TYPICAL SECTION #1
 STA. 100+63 to STA. 113+75
 STA. 117+05 to STA. 145+73



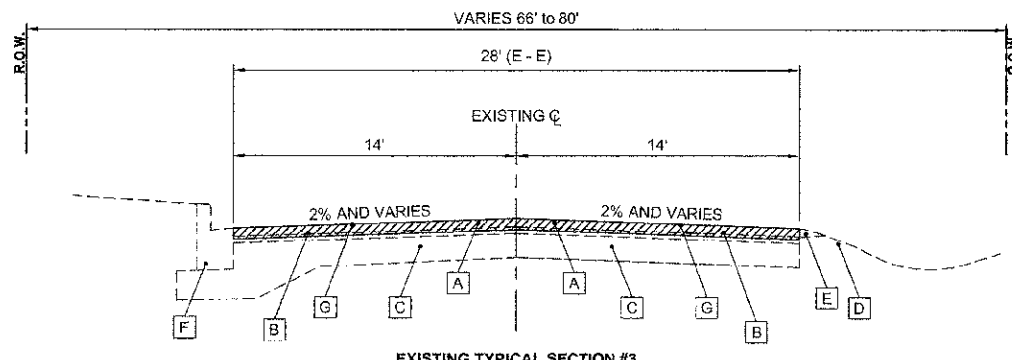
PROPOSED TYPICAL SECTION #1
 STA. 100+63 to STA. 113+75
 STA. 127+48 to STA. 145+73



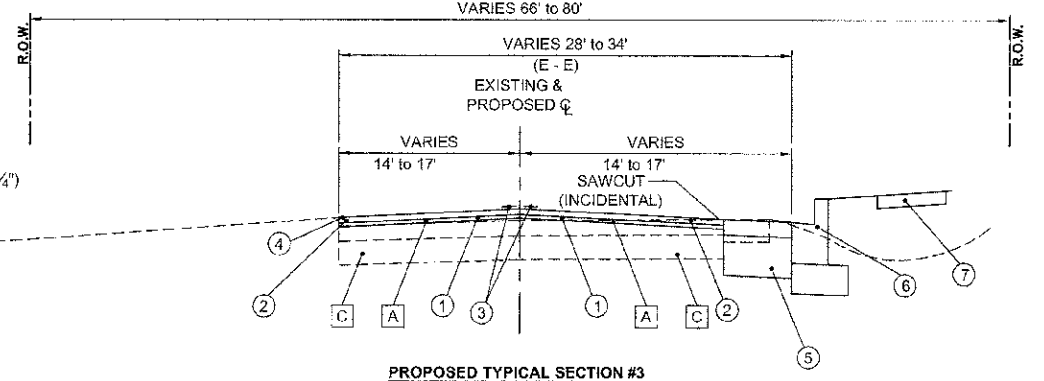
EXISTING TYPICAL SECTION #2
 STA. 113+75 to STA. 117+05



PROPOSED TYPICAL SECTION #2
 STA. 113+75 to STA. 117+05



EXISTING TYPICAL SECTION #3
 STA. 145+73 to STA. 187+00



PROPOSED TYPICAL SECTION #3
 STA. 117+05 to STA. 127+48

EXISTING TYPICAL SECTION LEGEND

- A EXISTING HMA SURFACE COURSE, 1 1/2" (TYP)
- B EXISTING HMA BINDER COURSE, 1 1/2" (TYP)
- C EXISTING HMA BASE COURSE, 7" & VARIES (TYP)
- D EXISTING GROUND
- E EXISTING AGG SHOULDER, 2' WIDE
- F EXISTING COMBINATION CONCRETE CURB AND GUTTER, TY B-6.12
- G HOT-MIX ASPHALT SURFACE REMOVAL, 2 1/4"
- H EXISTING P.C.C. SIDEWALK

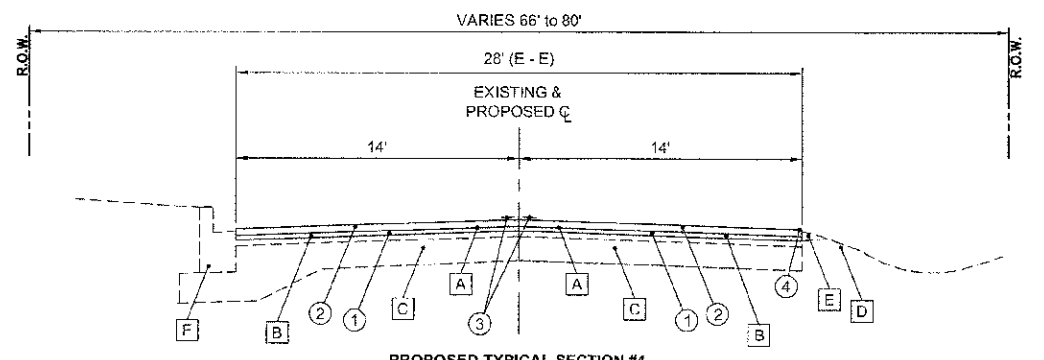
PROPOSED TYPICAL SECTION LEGEND

- 1 HOT-MIX ASPHALT POLYMERIZED LEVELING BINDER, MACHINE METHOD, N50 (3/4")
- 2 HOT-MIX ASPHALT SURFACE COURSE, MIX "D", N50 (1 1/2")
- 3 THERMOPLASTIC PAVEMENT MARKING - LINE 4" (DOUBLE YELLOW)
- 4 THERMOPLASTIC PAVEMENT MARKING - LINE 4" (SINGLE WHITE)
- 5 HOT-MIX ASPHALT BASE COURSE WIDENING, 7"
- 6 COMBINATION CONCRETE CURB AND GUTTER, TY-B6.12
- 7 P.C.C. SIDEWALK

CONTRACTOR SHALL MILL BEFORE PATCHING

HOT-MIX ASPHALT MIXTURE REQUIREMENTS	
MIXTURE TYPE	AIR VOIDS
HOT-MIX-ASPHALT SURFACE COURSE, MIX "D", N50 (IL 9.5 mm), 1 1/2"	4%±0.50 Gyr.
LEVELING BINDER (MACHINE METHOD), N50 (IL 9.5 mm), 3/4"	4%±0.50 Gyr.
CLASS D PATCHES (HMA BINDER IL-19 mm), 6" (2 LIFTS)	4%±0.50 Gyr.
HOT-MIX ASPHALT BASE COURSE WIDENING, 7"	4%±0.50 Gyr.

THE UNIT WEIGHT USED TO CALCULATE ALL HMA SURFACE MIXING QUANTITIES IS 112 LBS./SQ.YD./IN. THE "AC TYPE" FOR POLYMERIZED HMA MIXES SHALL BE SBS/SBR PG 70-22" AND FOR NON-POLYMERIZED HMA THE "AC TYPE" SHALL BE "PG 64-22" UNLESS MODIFIED BY DISTRICT ONE SPECIAL PROVISIONS. FOR "PERCENT OF RAP" SEE DISTRICT ONE SPECIAL PROVISIONS.



PROPOSED TYPICAL SECTION #4
 STA. 145+73 to STA. 187+00



ENGINEERING RESOURCE ASSOCIATES, INC.
 CONSULTING ENGINEERS, SCIENTISTS & SURVEYORS
 USER NAME: rborner
 FILE NAME: W:\Irrigation\120707-00 Madison Street\14504501\20707 TYPICAL SECTIONS.dwg
 PLOT SCALE: 1/8"=1'-0"
 PLOT DATE: 12/14/2012

DESIGNED: BD
 DRAWN: RT
 CHECKED: SW
 DATE: 10-19-12
 REVISED: _____
 REVISED: _____
 REVISED: _____
 REVISED: _____

STATE OF ILLINOIS
 DEPARTMENT OF TRANSPORTATION

TYPICAL SECTIONS
 MADISON STREET

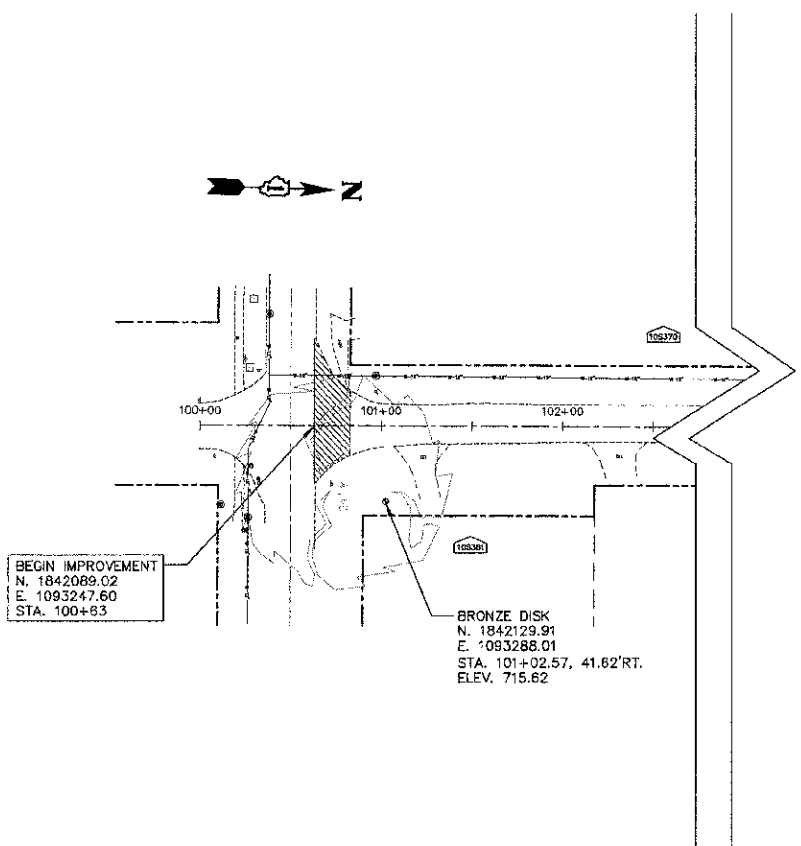
SCALE: N.T.S.

STA. TO STA.

F.A.U. RTE.	SECTION	COUNTY	TOTAL SHEETS	SHEET NO.
2674	11-00045-00-RS	DUPAGE	20	3
CONTRACT NO. 63784			ILLINOIS FED. AID PROJECT	

DATE: _____
 BY: _____
 SURVEYED: _____
 PLAN: _____
 CHECKED: _____
 RT. OF: _____
 NO. _____
 FILE NAME: _____

DATE: _____
 BY: _____
 SURVEYED: _____
 PROFILE: _____
 CHECKED: _____
 RT. OF: _____
 NO. _____
 FILE NAME: _____



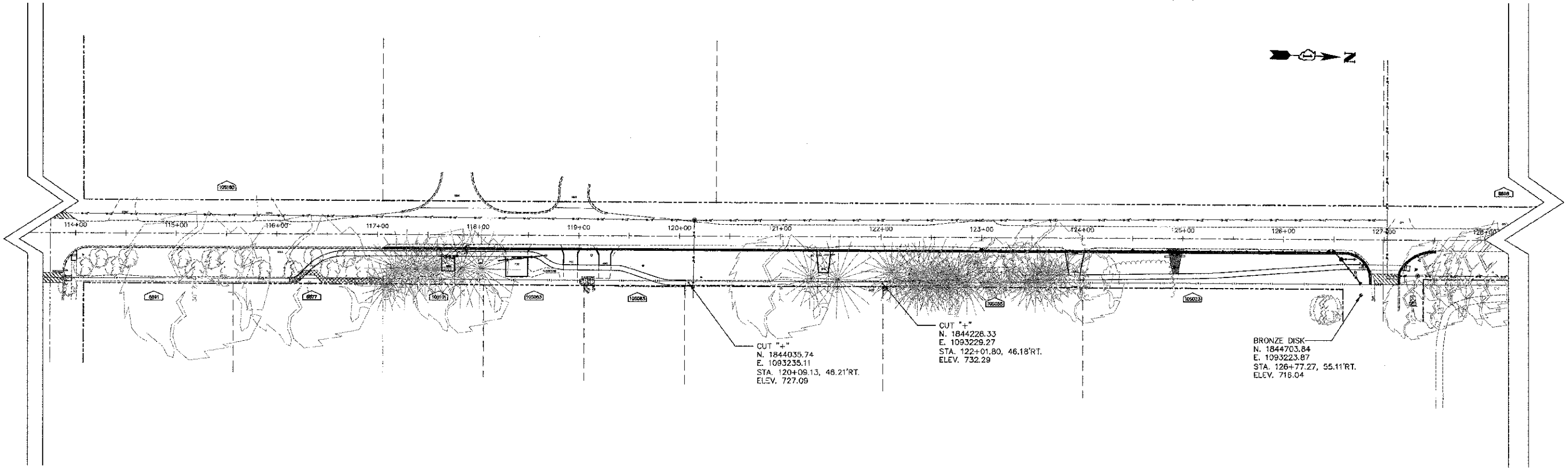
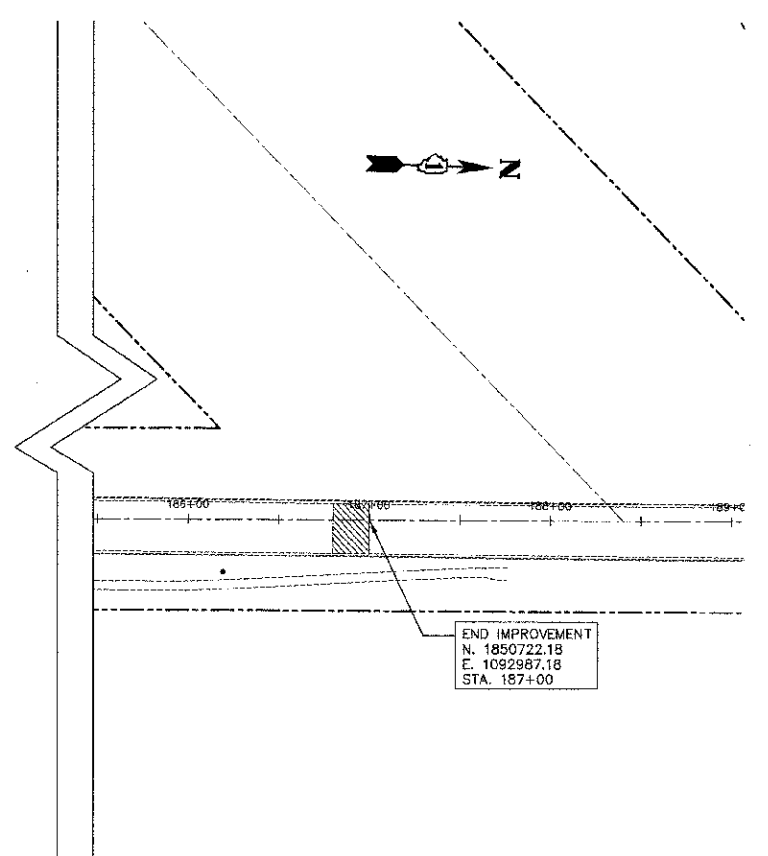
ALIGNMENT TIES

STA.	NORTHING	EASTING
117+00	1843725.36	1093198.34
118+00	1843825.31	1093195.23
119+00	1843925.27	1093192.21
120+00	1844025.22	1093189.20
121+00	1844125.18	1093186.18
122+00	1844225.13	1093183.17
123+00	1844325.09	1093180.15
124+00	1844425.04	1093177.14
125+00	1844524.99	1093174.12
126+00	1844624.95	1093171.11
127+00	1844724.90	1093168.09

BENCHMARKS

DESCRIPTION	STATION	NORTHING	EASTING	ELEVATION
BRONZE DISK	101+02.57, 41.62' RT.	1842129.91	1093288.01	715.62
BRONZE DISK	126+77.27, 55.11' RT.	1844703.84	1093223.87	716.04

DATUM: NAD83



ENGINEERING RESOURCE ASSOCIATES, INC.
 CONSULTING ENGINEERS, SCIENTISTS & SURVEYORS

USER NAME: rtonner	DESIGNED: 90	REVISED: ---
FILE NAME: \\Server\rippe\2070100 Madison Street	DRAWN: RT	REVISED: ---
PLOT SCALE: 1"=50'	CHECKED: SW	REVISED: ---
PLOT DATE: 12/14/2012	DATE: 10-19-12	REVISED: ---

STATE OF ILLINOIS DEPARTMENT OF TRANSPORTATION

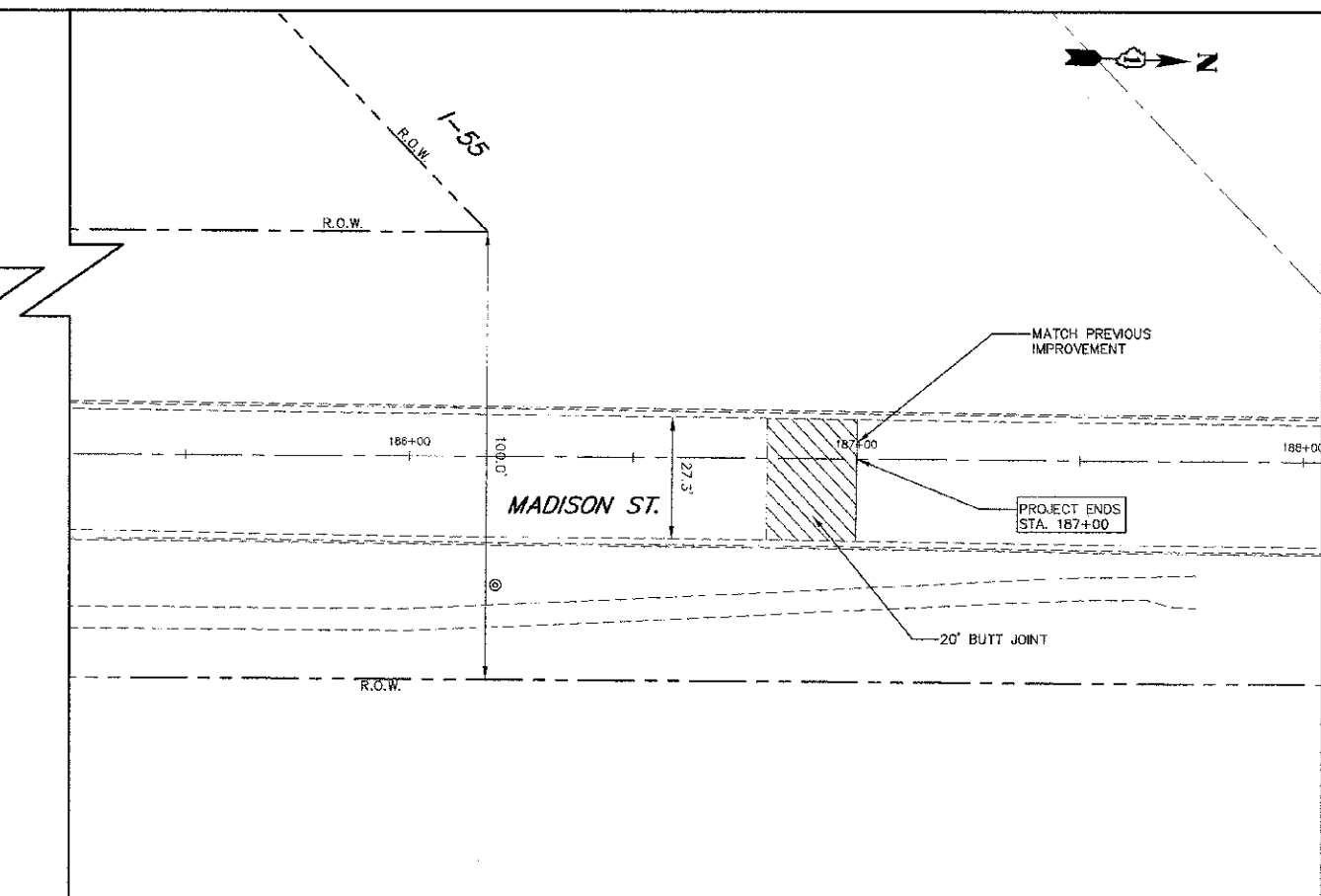
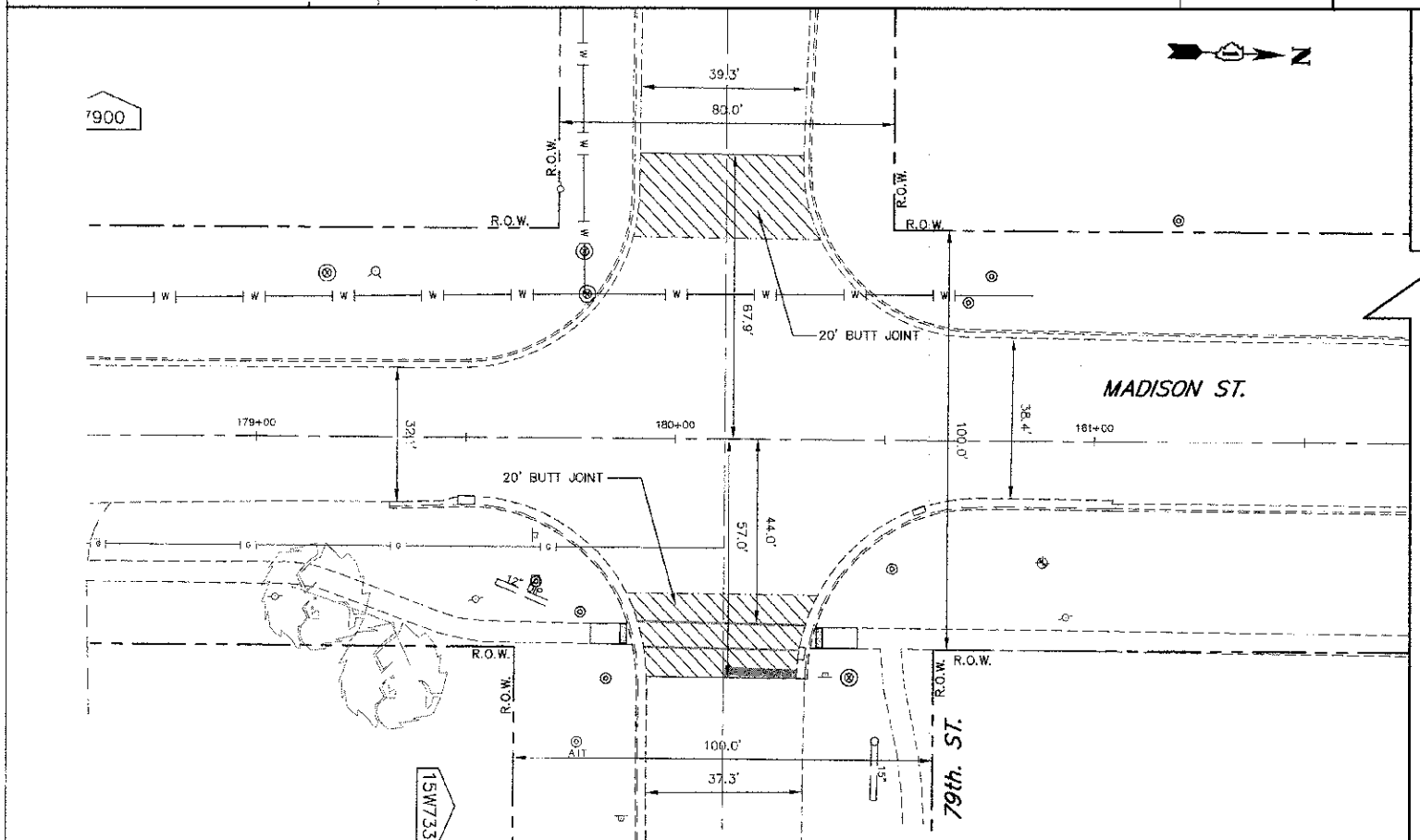
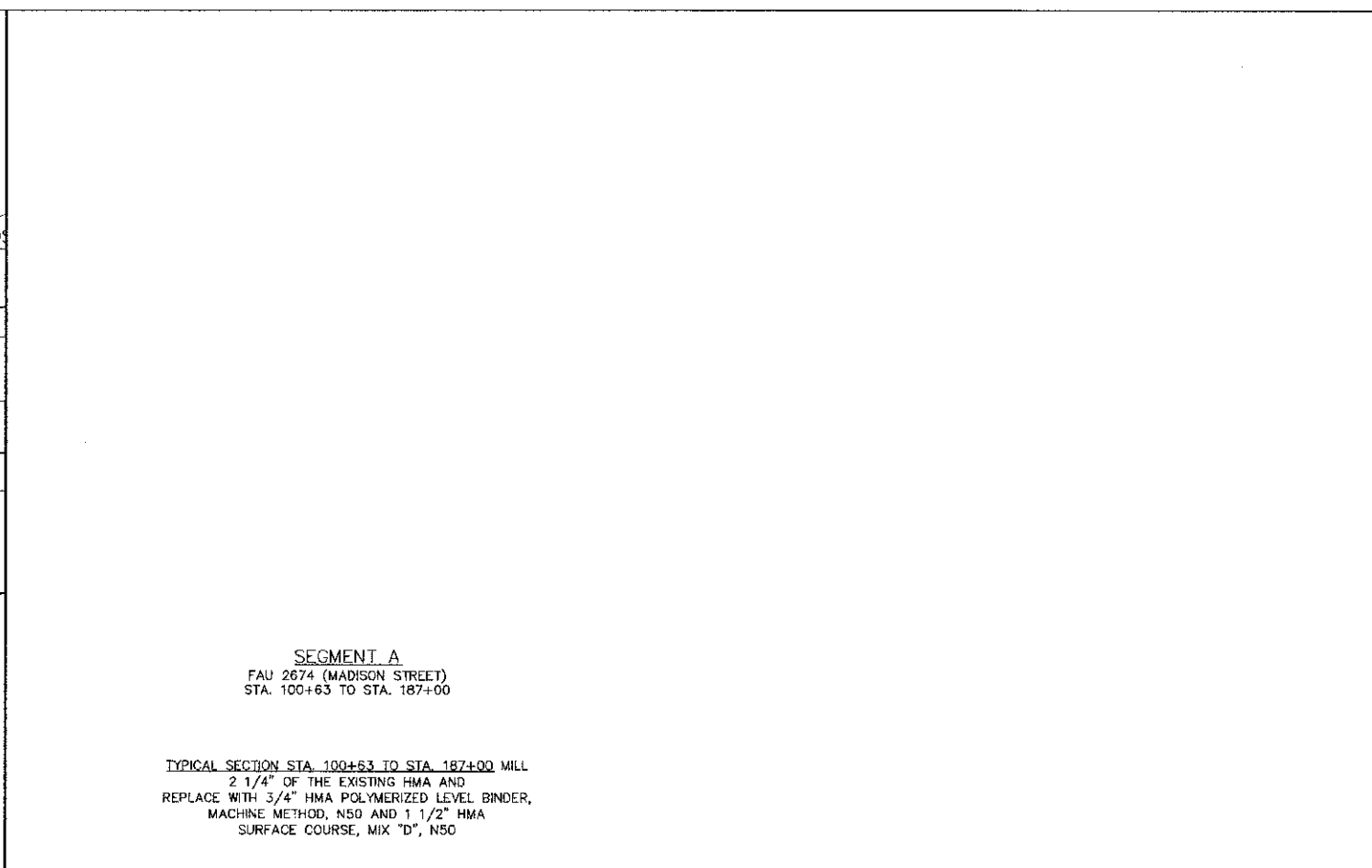
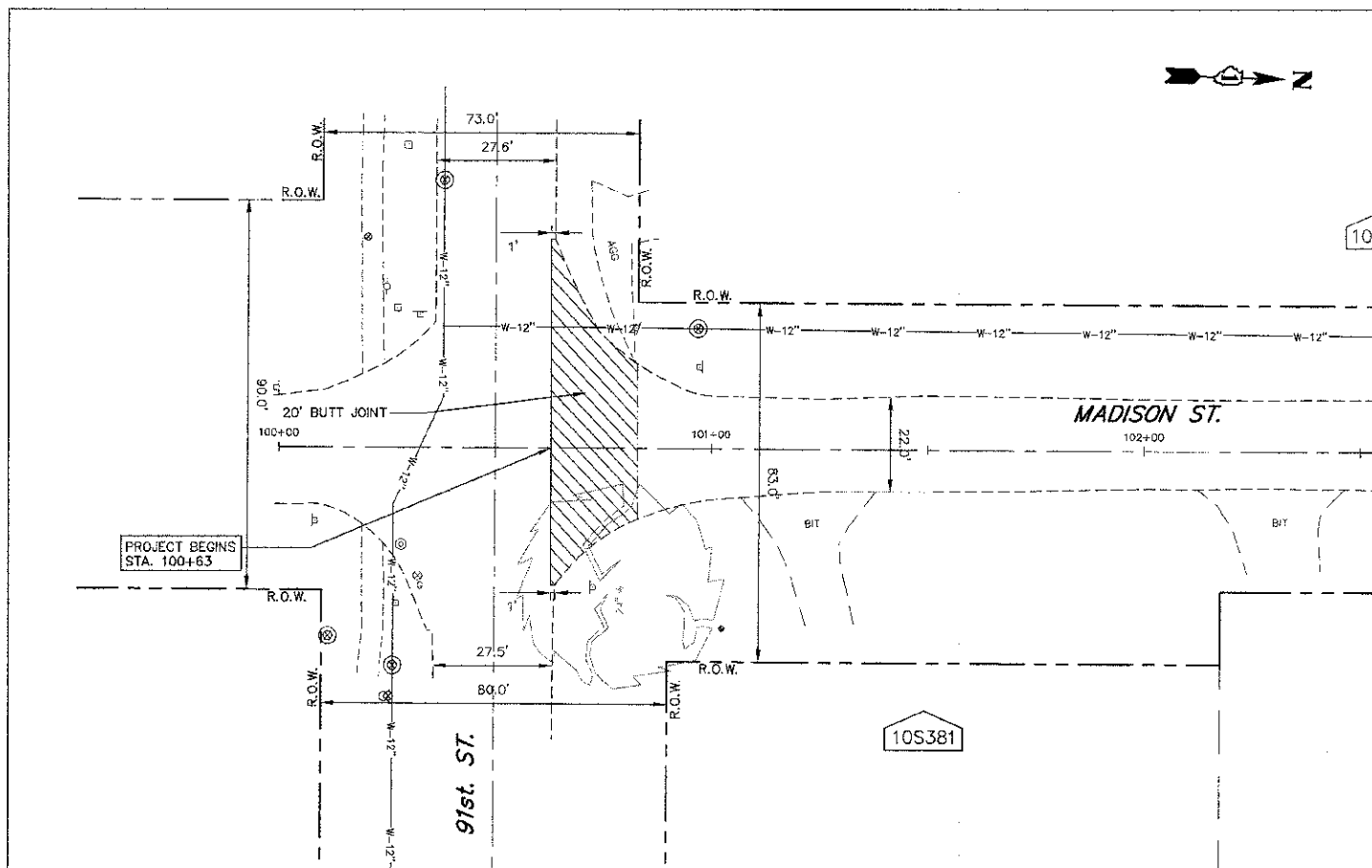
ALIGNMENT, TIES AND BENCHMARKS

SCALE: 1"=50' SHEET NO. 1 OF 1 SHEETS STA. TO STA.

F.A.U. RTE. 2674	SECTION II-004500-RS	COUNTY DUPAGE	TOTAL SHEETS 4
CONTRACT NO. 63784			
FED. ROAD DIST. NO. - ILLINOIS FED. AID PROJECT			

DATE	
BY	
REVISIONS	
1. SURVEYED	
2. DESIGNED	
3. CHECKED	
4. APPROVED	
5. AS BUILT	
6. REVISIONS	
7. DATE	
8. BY	
9. REVISIONS	
10. DATE	
11. BY	
12. REVISIONS	
13. DATE	
14. BY	
15. REVISIONS	
16. DATE	
17. BY	
18. REVISIONS	
19. DATE	
20. BY	
21. REVISIONS	
22. DATE	
23. BY	
24. REVISIONS	
25. DATE	
26. BY	
27. REVISIONS	
28. DATE	
29. BY	
30. REVISIONS	
31. DATE	
32. BY	
33. REVISIONS	
34. DATE	
35. BY	
36. REVISIONS	
37. DATE	
38. BY	
39. REVISIONS	
40. DATE	
41. BY	
42. REVISIONS	
43. DATE	
44. BY	
45. REVISIONS	
46. DATE	
47. BY	
48. REVISIONS	
49. DATE	
50. BY	
51. REVISIONS	
52. DATE	
53. BY	
54. REVISIONS	
55. DATE	
56. BY	
57. REVISIONS	
58. DATE	
59. BY	
60. REVISIONS	
61. DATE	
62. BY	
63. REVISIONS	
64. DATE	
65. BY	
66. REVISIONS	
67. DATE	
68. BY	
69. REVISIONS	
70. DATE	
71. BY	
72. REVISIONS	
73. DATE	
74. BY	
75. REVISIONS	
76. DATE	
77. BY	
78. REVISIONS	
79. DATE	
80. BY	
81. REVISIONS	
82. DATE	
83. BY	
84. REVISIONS	
85. DATE	
86. BY	
87. REVISIONS	
88. DATE	
89. BY	
90. REVISIONS	
91. DATE	
92. BY	
93. REVISIONS	
94. DATE	
95. BY	
96. REVISIONS	
97. DATE	
98. BY	
99. REVISIONS	
100. DATE	

DATE	
BY	
REVISIONS	
1. SURVEYED	
2. DESIGNED	
3. CHECKED	
4. APPROVED	
5. AS BUILT	
6. REVISIONS	
7. DATE	
8. BY	
9. REVISIONS	
10. DATE	
11. BY	
12. REVISIONS	
13. DATE	
14. BY	
15. REVISIONS	
16. DATE	
17. BY	
18. REVISIONS	
19. DATE	
20. BY	
21. REVISIONS	
22. DATE	
23. BY	
24. REVISIONS	
25. DATE	
26. BY	
27. REVISIONS	
28. DATE	
29. BY	
30. REVISIONS	
31. DATE	
32. BY	
33. REVISIONS	
34. DATE	
35. BY	
36. REVISIONS	
37. DATE	
38. BY	
39. REVISIONS	
40. DATE	
41. BY	
42. REVISIONS	
43. DATE	
44. BY	
45. REVISIONS	
46. DATE	
47. BY	
48. REVISIONS	
49. DATE	
50. BY	
51. REVISIONS	
52. DATE	
53. BY	
54. REVISIONS	
55. DATE	
56. BY	
57. REVISIONS	
58. DATE	
59. BY	
60. REVISIONS	
61. DATE	
62. BY	
63. REVISIONS	
64. DATE	
65. BY	
66. REVISIONS	
67. DATE	
68. BY	
69. REVISIONS	
70. DATE	
71. BY	
72. REVISIONS	
73. DATE	
74. BY	
75. REVISIONS	
76. DATE	
77. BY	
78. REVISIONS	
79. DATE	
80. BY	
81. REVISIONS	
82. DATE	
83. BY	
84. REVISIONS	
85. DATE	
86. BY	
87. REVISIONS	
88. DATE	
89. BY	
90. REVISIONS	
91. DATE	
92. BY	
93. REVISIONS	
94. DATE	
95. BY	
96. REVISIONS	
97. DATE	
98. BY	
99. REVISIONS	
100. DATE	



ENGINEERING RESOURCE ASSOCIATES, INC.
CONSULTING ENGINEERS, SCIENTISTS & SURVEYORS

USER NAME	ctanner	DESIGNED	BD	REVISED	
FILE NAME	V:\00-1149\120701 Madison St.dwg	DRAWN	BT	REVISED	
PLOT SCALE	1"=20'	CHECKED	SW	REVISED	
PLOT DATE	12/14/2012	DATE	10-18-12	REVISED	

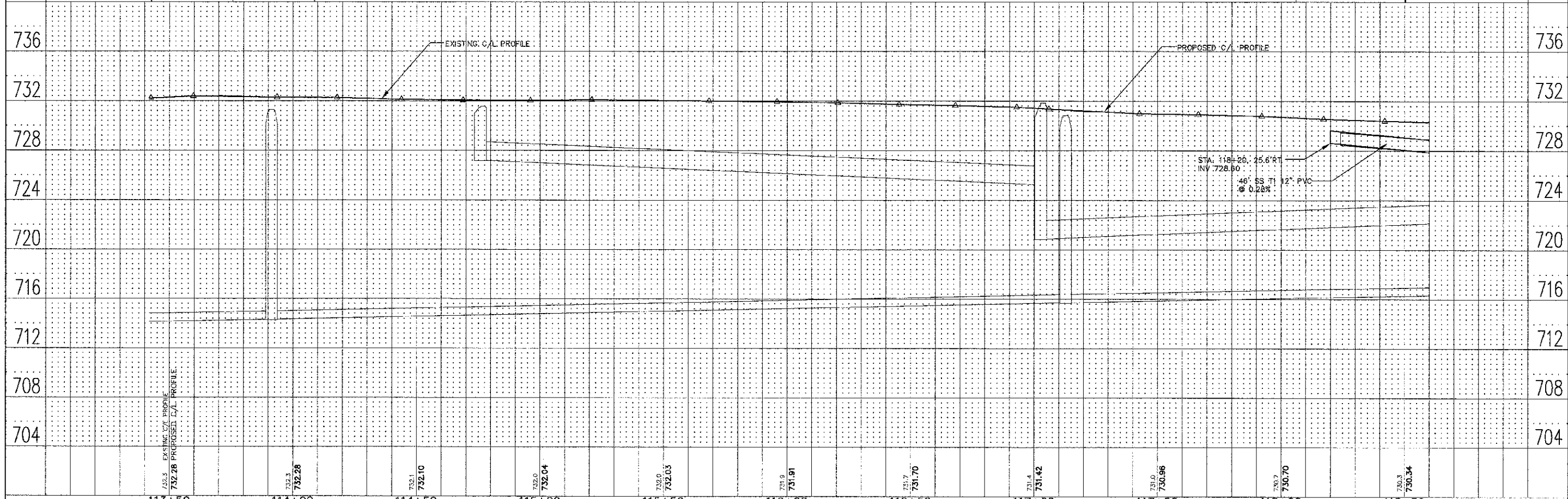
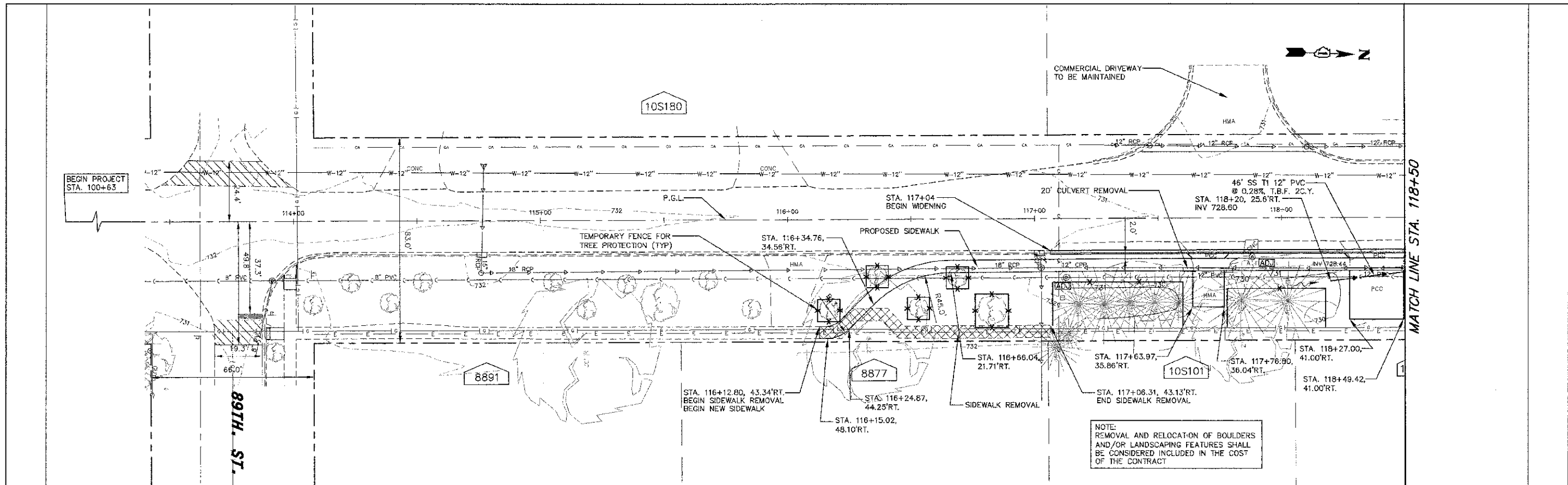
STATE OF ILLINOIS DEPARTMENT OF TRANSPORTATION

TERMINI DETAILS MADISON STREET
SCALE: 1"=20' SHEET NO. 1 OF 1 SHEETS STA. TO STA.

F.A.U. RTE.	SECTION	COUNTY	TOTAL SHEETS	SHEET NO.
2674	II-0045-00-RS	DEPAGE	20	3
FED. ROAD DIST. NO.			ILLINOIS FED. AID PROJECT	
CONTRACT NO.			63784	

DATE	
BY	
REVISIONS	
NO.	
DATE	
BY	
REVISIONS	
NO.	
DATE	
BY	
REVISIONS	
NO.	

DATE	
BY	
REVISIONS	
NO.	
DATE	
BY	
REVISIONS	
NO.	
DATE	
BY	
REVISIONS	
NO.	



113+50	114+00	114+50	115+00	115+50	116+00	116+50	117+00	117+50	118+00	118+50
732.28	732.10	732.04	732.03	731.91	731.70	731.42	730.96	730.70	730.34	

ENGINEERING RESOURCE ASSOCIATES, INC.
 1500 N. Burr Ridge Road, Suite 100, Burr Ridge, IL 60521
 (708) 439-8800 FAX (708) 439-8801
 www.era-inc.com

USER NAME = rtonner
 FILE NAME = V:\Burr Ridge\120791.00\Madison Street
 PLOT SCALE = #SCALE#
 PLOT DATE = 1/24/2013

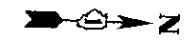
DESIGNED - BD
 DRAWN - RT
 CHECKED - SW
 DATE - 10-19-12

REVISED - 01-24-2013
 REVISED -
 REVISED -

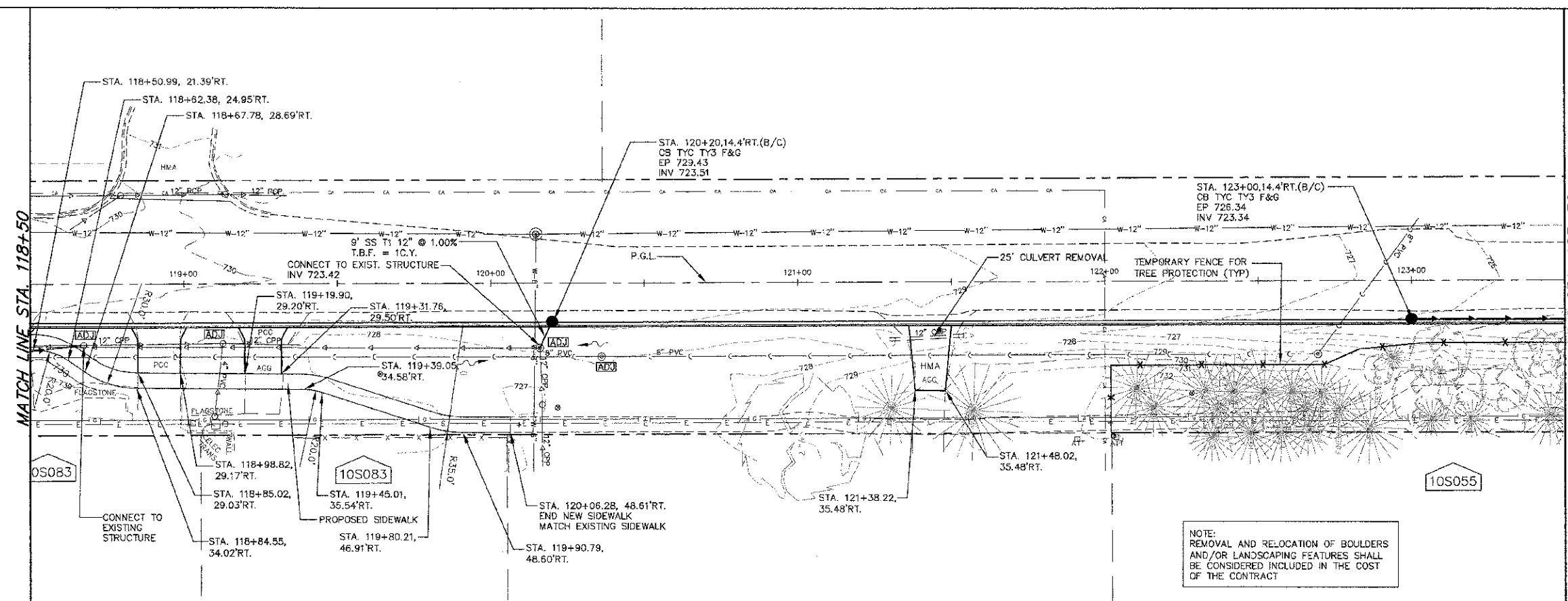
STATE OF ILLINOIS DEPARTMENT OF TRANSPORTATION

MADISON STREET
 SCALE: 1"=20'
 SHEET NO. 1 OF 3 SHEETS
 STA. 113+50 TO STA. 118+50

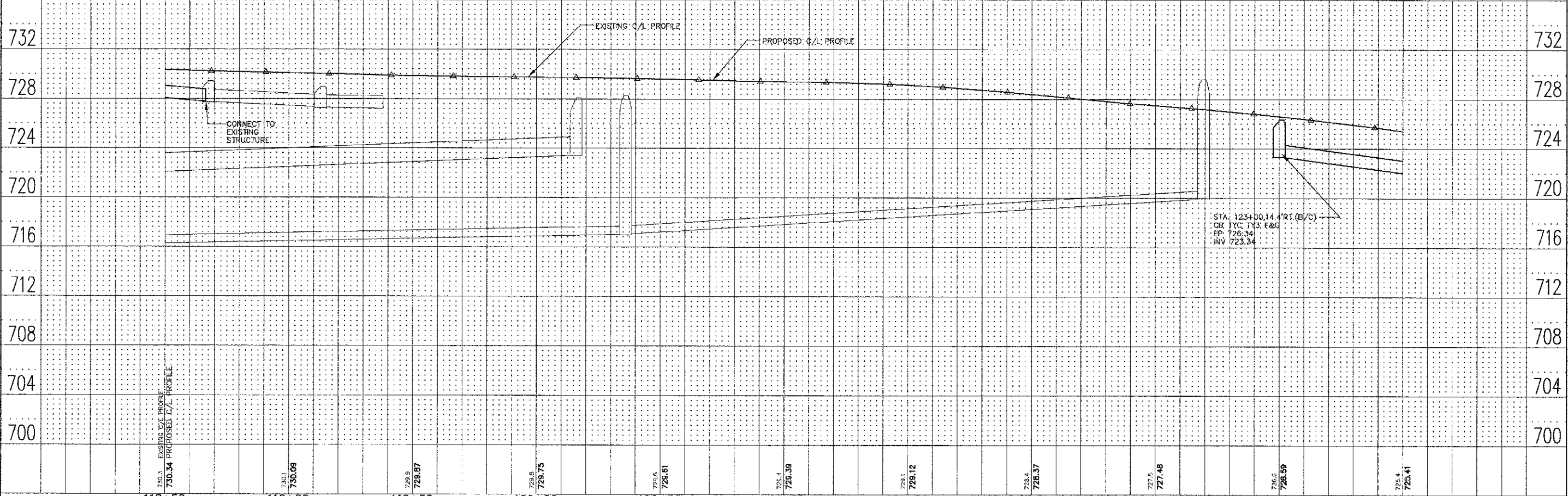
F.A.D.D. RTE.	SECTION	COUNTY	TOTAL SHEETS	SHEET NO.
2674	11-0045-00-RS	DUPAGE	20	6
CONTRACT NO. 63784				
FED. ROAD DIST. NO. ILLINOIS FED. AID PROJECT				



DATE	
BY	
REVISION	
PLANNED	
ALIGNED	
CHECKED	
NO.	
NOTE BOOK	
NO.	
FILE NAME	



DATE	
BY	
REVISION	
PROFILING	
GRADES CHECKED	
NO.	
STRUCTURE	
RETAINING	
CHRO	



118+50	119+00	119+50	120+00	120+50	121+00	121+50	122+00	122+50	123+00	123+50
730.3	730.1	729.9	729.8	729.6	729.4	729.1	728.4	727.5	726.6	725.4
730.34	730.09	729.87	729.75	729.61	729.39	729.12	728.37	727.48	726.59	725.41

ENGINEERING RESOURCE ASSOCIATES, INC.
CONSULTING ENGINEERS, SURVEYORS & SURVEYORS

USER NAME = rlanter	DESIGNED = BD	REVISED = 01 24 2013
FILE NAME = \\Server\lbgp\120701.00\Madison Street	DRAWN = RT	REVISED =
PLOT SCALE = 1"=20'	CHECKED = SW	REVISED =
PLOT DATE = 1/24/2013	DATE = 10-19-12	REVISED =

STATE OF ILLINOIS DEPARTMENT OF TRANSPORTATION

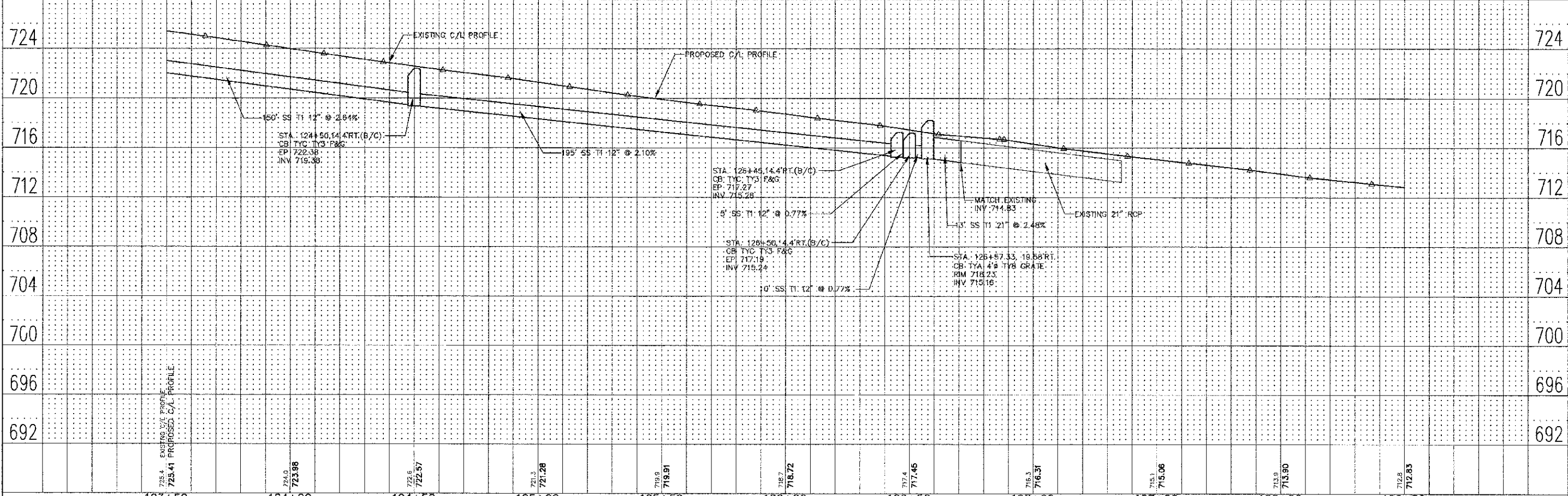
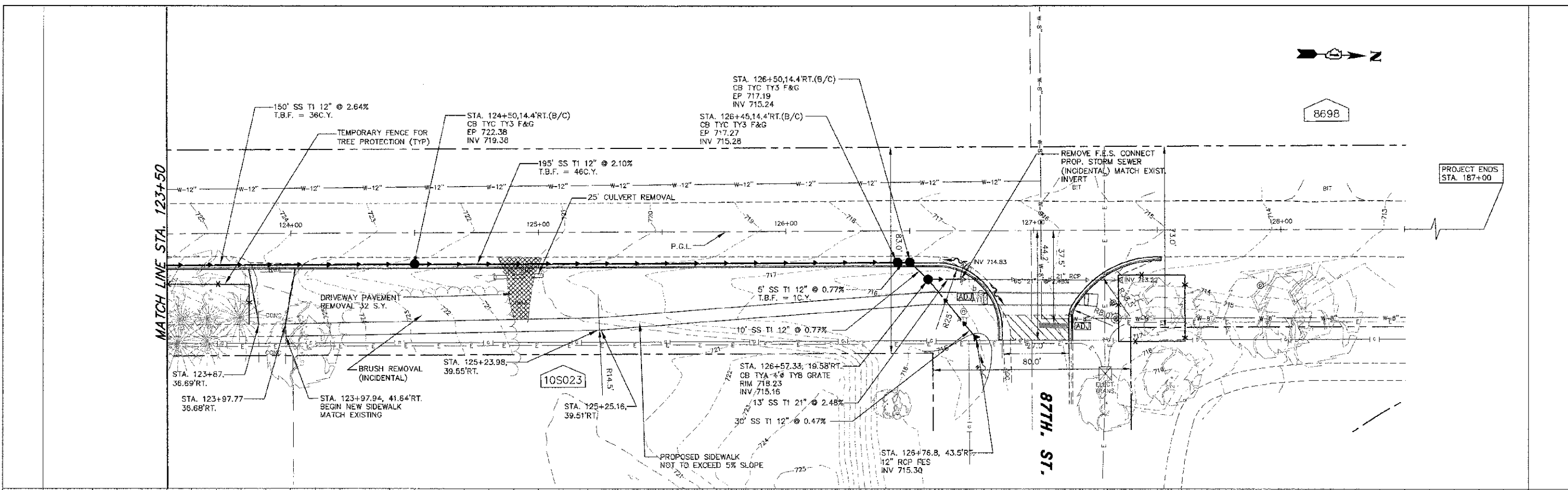
MADISON STREET
SCALE: 1"=20' SHEET NO. 2 OF 3 SHEETS STA. 118+50 TO STA. 123+50

F.A.L. RTE.	SECTION	COUNTY	TOTAL SHEETS
2674	II-0045-00-RS	DUPAGE	29 7
CONTRACT NO. 63784			

FED. ROAD DIST. NO. ILLINOIS FED. AID PROJECT

DATE	
BY	
REVISED	
GRADES CHECKED	
ALIGNMENT CHECKED	
NOTE BOOK NO.	
FIELD FILE NAME	

DATE	
BY	
REVISED	
GRADES CHECKED	
ALIGNMENT CHECKED	
NOTE BOOK NO.	
FIELD FILE NAME	



123+50	124+00	124+50	125+00	125+50	126+00	126+50	127+00	127+50	128+00	128+50										
725.4	724.0	723.98	723.6	722.57	721.3	721.28	719.9	719.91	718.7	718.72	717.4	717.46	716.3	716.31	715.1	715.06	713.9	713.90	712.8	712.83

ENGINEERING RESOURCE ASSOCIATES, INC.
CONSULTING ENGINEERS, SURVEYORS & SURVEYORS

USER NAME = rtonner	DESIGNED = HD	REVISED = 01-24-2013
FILE NAME = V:\Burr Ridge\1207010C Madison Street LAD\CAD\2010\1207010C Plan\Profile.dwg	DRAWN = RT	REVISED =
PLOT SCALE = 1/4"=20'	CHECKED = SW	REVISED =
PLOT DATE = 1/24/2013	DATE = 10-19-12	REVISED =

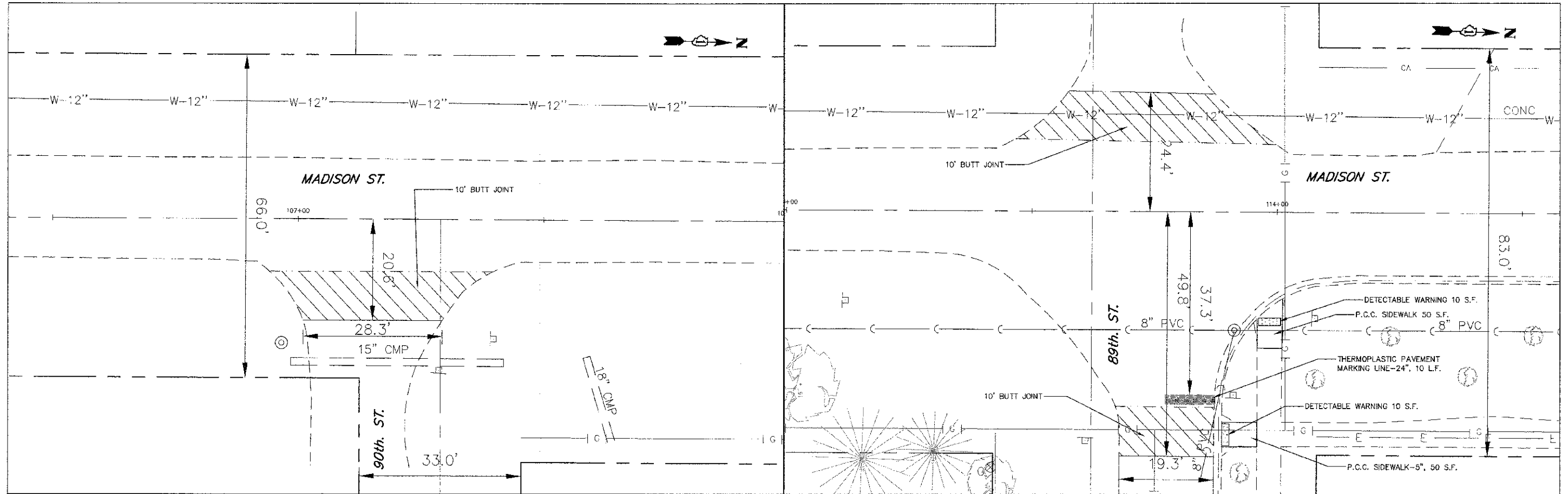
**STATE OF ILLINOIS
DEPARTMENT OF TRANSPORTATION**

MADISON STREET

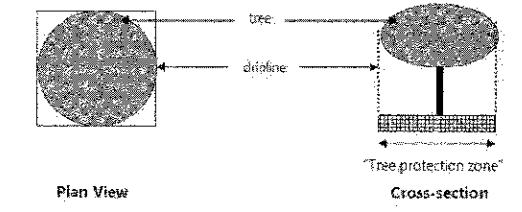
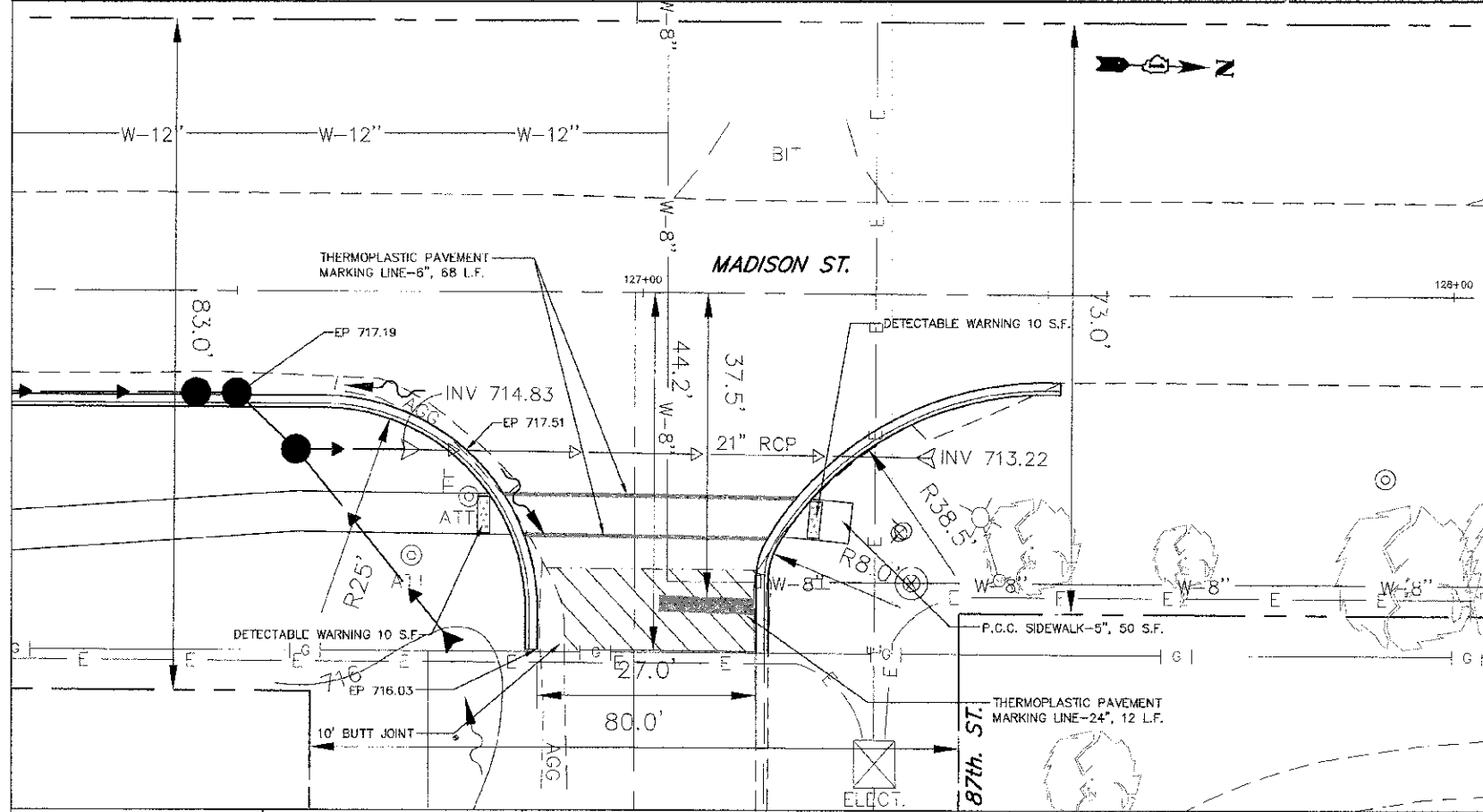
SCALE: 1"=20' SHEET NO. 3 OF 3 SHEETS STA. 123+50 TO STA. 128+50

F.A.U. RTE. 2674	SECTION II-0045-00-RS	COUNTY DUPAGE	TOTAL SHEETS 20	SHEET NO. 3
FED. ROAD DIST. NO. ILLINOIS FED. AID PROJECT			CONTRACT NO. 63794	

DATE	
BY	
REVISION	
PROJECT	
NOTED	
CHECKED	
DESIGNED	
DRAWN	
PLANT	
NOTE BOOK	
NO.	



DATE	
BY	
REVISION	
PROJECT	
NOTED	
CHECKED	
DESIGNED	
DRAWN	
PLANT	
NOTE BOOK	
NO.	



TREE PROTECTION DETAIL
N.T.S.



ENGINEERING RESOURCE ASSOCIATES, INC.	USER NAME = rtorner	DESIGNED = BD	REVISED = 01 24 2013
CORPORATE ENGINEERS, SCIENTISTS & ARCHITECTS	FILE NAME = \\N:\proj\12701\00 Madison Street\LAPO\CA02\12701_madison_s1.dwg	DRAWN = RT	REVISED =
	PLCT SCALE = 1"=10'	CHECKED = SW	REVISED =
	PLCT DATE = 1/21/2013	DATE = 10 19 12	REVISED =

STATE OF ILLINOIS
DEPARTMENT OF TRANSPORTATION

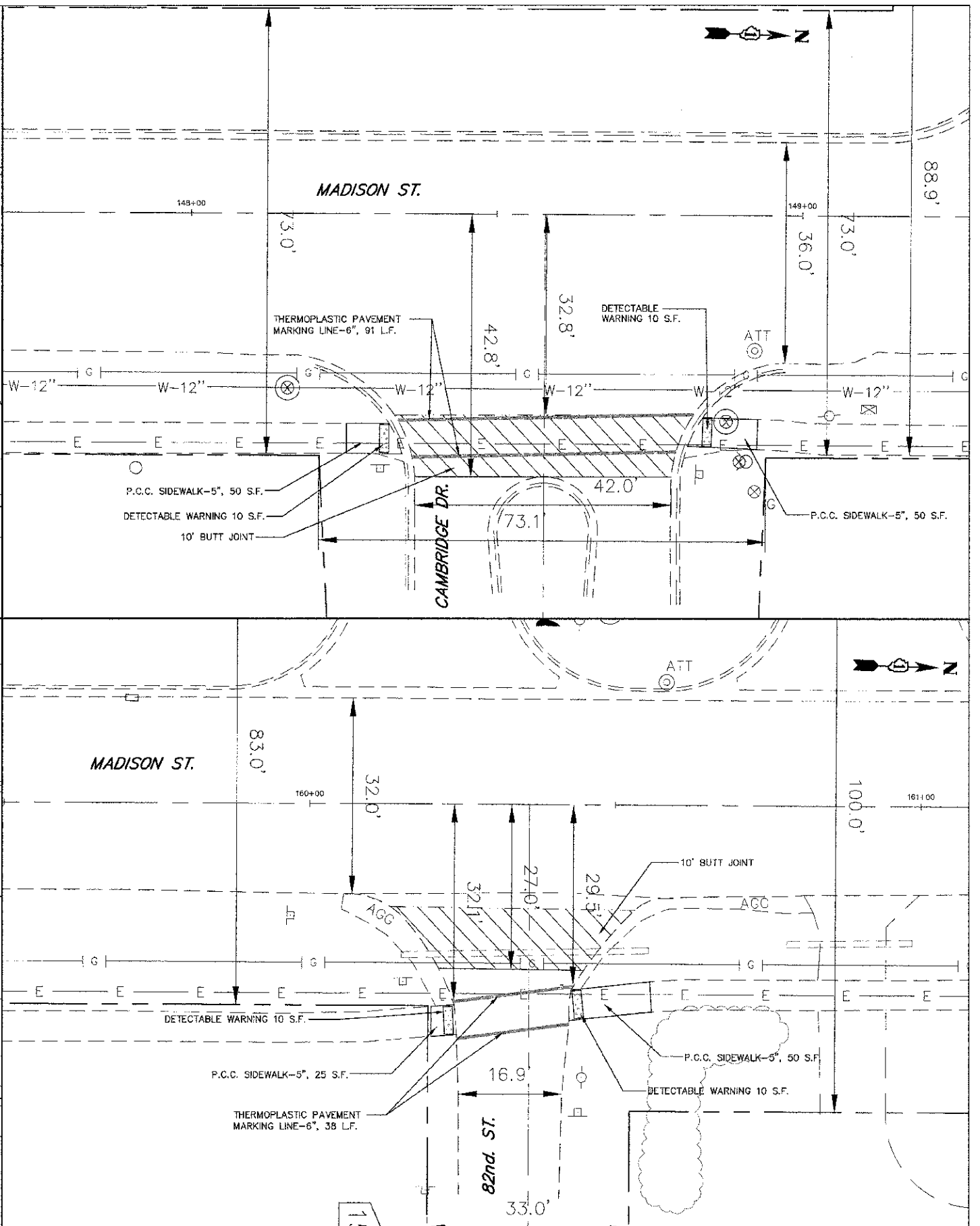
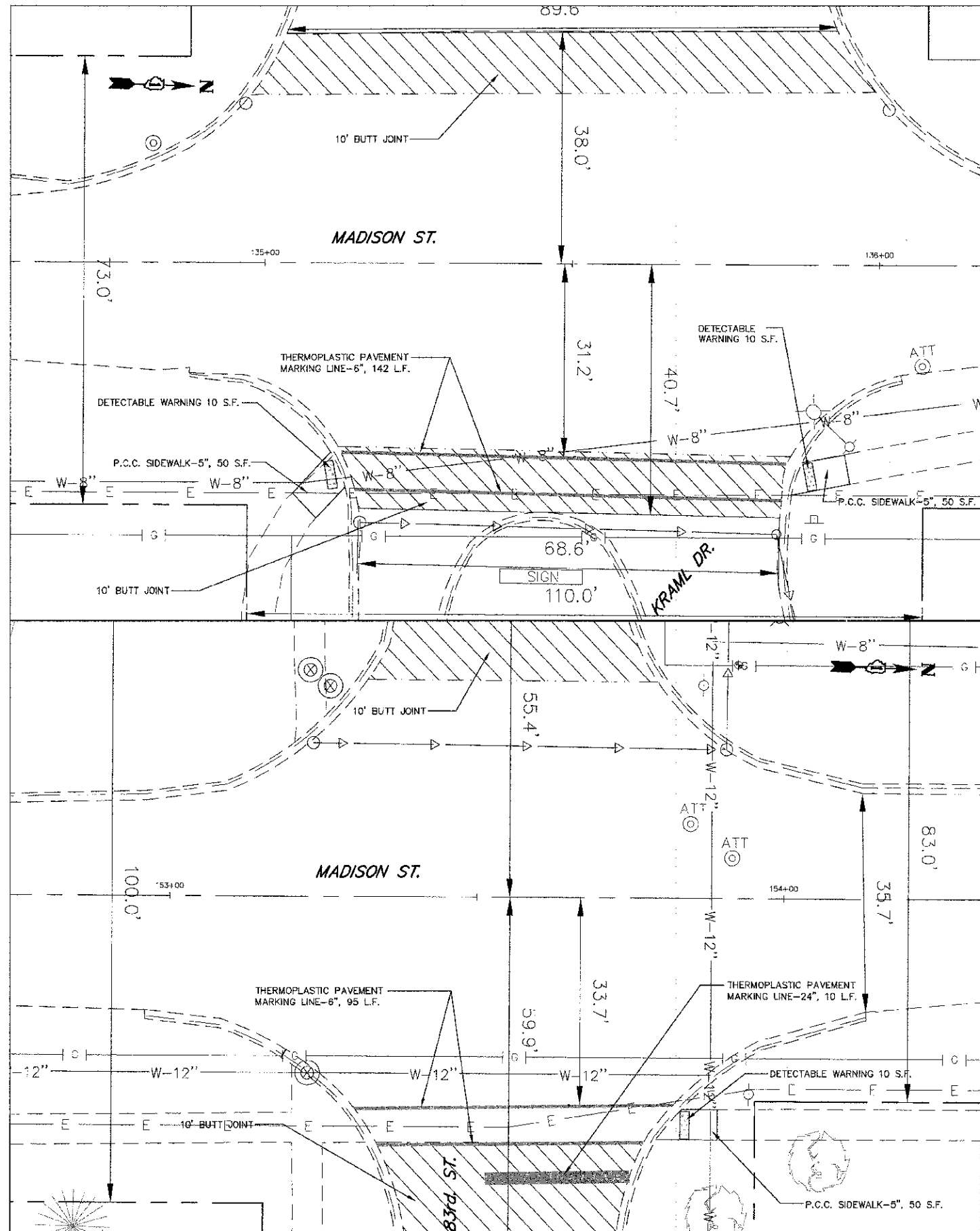
MADISON STREET
INTERSECTION DETAILS

SCALE: 1"=0' SHEET NO. 1 OF 3 SHEETS STA. 106+50 TO STA. 127+50

F.A.U. NO.	SECTION	COUNTY	TOTAL SHEETS
2674	11 004E CC-RS	DLPAGE	20 9
CONTRACT NO. 63784			
FED. ROAD DIST. NO. ILLINOIS FED. AID PROJECT			

DATE	
BY	
REVISION	
NO.	
DATE	
BY	
REVISION	
NO.	
DATE	
BY	
REVISION	
NO.	

DATE	
BY	
REVISION	
NO.	
DATE	
BY	
REVISION	
NO.	
DATE	
BY	
REVISION	
NO.	



ENGINEERING RESOURCE ASSOCIATES, INC.
CONSULTING ENGINEERS, SURVEYORS & SURVEYORS

USER NAME = rturner
FILE NAME = V:\Illinois\120701\00 Madison Street\1401\CAD\120701 Madison St.dwg
PLOT SCALE = 1"=10'
PLOT DATE = 12/14/2012

DESIGNED - BD
DRAWN - RT
CHECKED - SW
DATE - 10/19/12

REVISED
REVISED
REVISED
REVISED

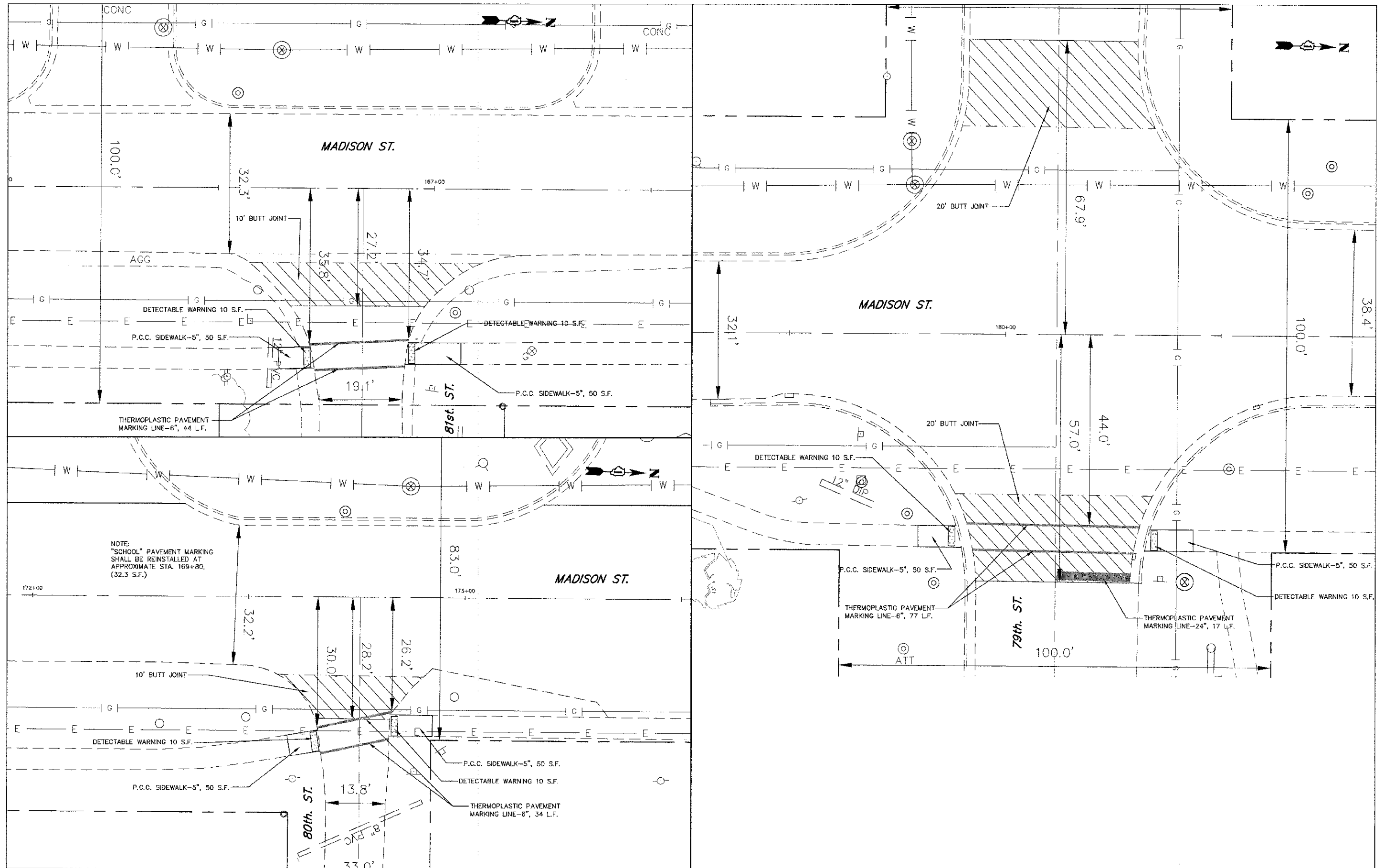
STATE OF ILLINOIS DEPARTMENT OF TRANSPORTATION

MADISON STREET INTERSECTION DETAILS
SCALE: 1"=10'
SHEET NO. 2 OF 3 SHEETS
STA. 135+00 TO STA. 161+00

F.A.U. RTE. 2674	SECTION II-00/5-CG-RS	COUNTY	TOTAL SHEETS 20	SHEET NO. 10
FED. ROAD DIST. NO. - ILLINOIS			CONTRACT NO. 63784	

DATE	
BY	
REVISIONS	
PLAN	REWORKED
	NOTED
	NOTE BOOK
	NO.

DATE	
BY	
REVISIONS	
PROFILE	REWORKED
	NOTED
	NOTE BOOK
	NO.



ENGINEERING RESOURCE ASSOCIATES, INC.
CONSULTING ENGINEERS, SCIENTISTS & SURVEYORS

USER NAME	= rtonner	DESIGNED	= BD	REVISED	=
FILE NAME	= \\server\resca\120701.00 Madison Street	DRAWN	= RT	REVISED	=
PROJECT NAME	= LA01\GAD01\120701 Madison St.dwg	CHECKED	= SW	REVISED	=
PLOT SCALE	= 1"=10'	DATE	= 10-9-12	REVISED	=
PLOT DATE	= 12/14/2012				

STATE OF ILLINOIS
DEPARTMENT OF TRANSPORTATION

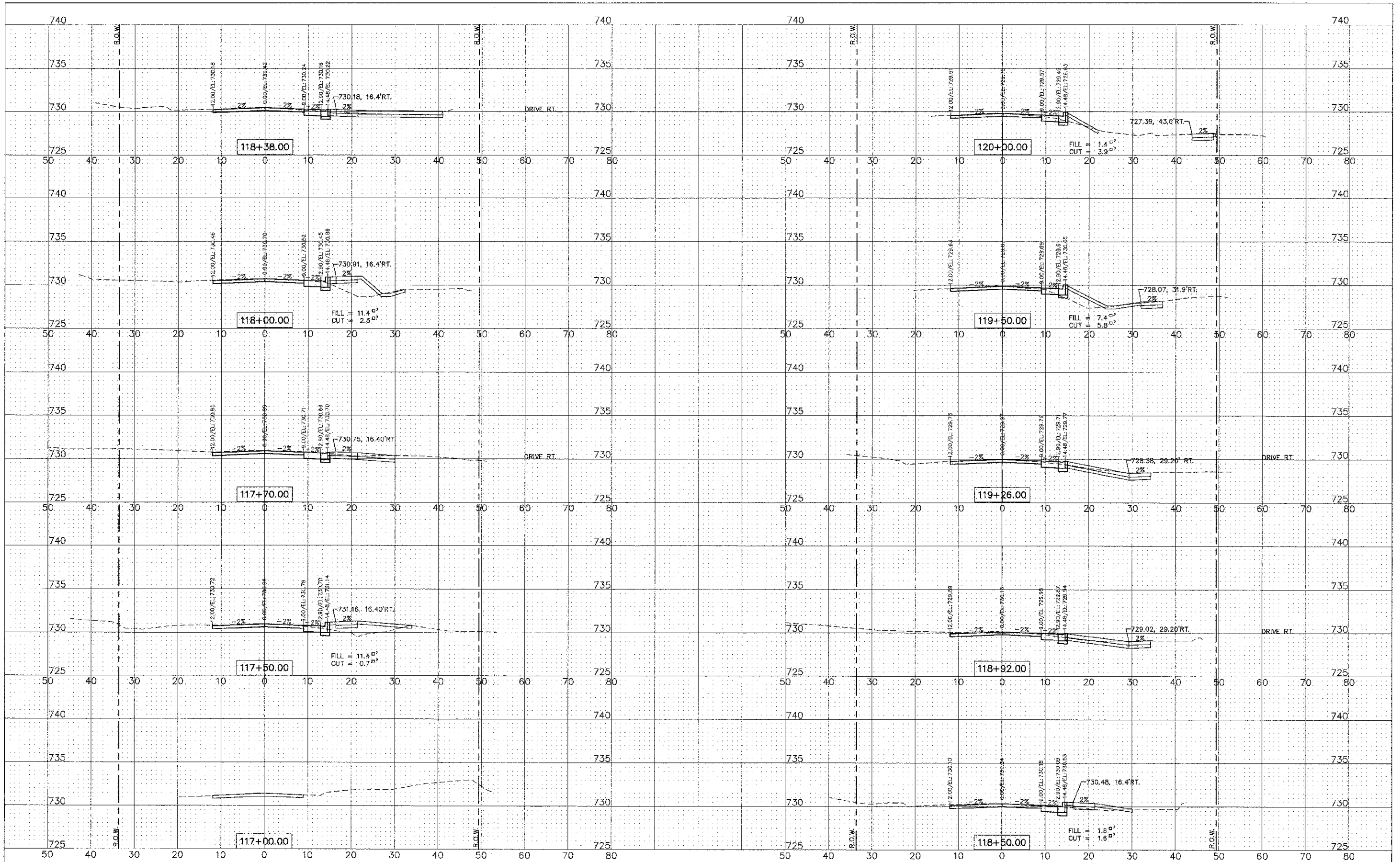
MADISON STREET
INTERSECTION DETAILS

SCALE: 1"=10' SHEET NO. 3 OF 3 SHEETS STA. 166+00 TO STA. 18+00

F.A. J. RTE.	SECTION	COUNTY	TOTAL SHEETS
2674	3-0045-00-RS	DUPAGE	23
CONTRACT NO. 63784			SHEET NO. 11
FED. ROAD DIST. NO. 1 ILLINOIS REG. AID PROJECT			

DATE	
BY	
REVISION	
NO.	
DATE	
BY	
REVISION	
NO.	
DATE	
BY	
REVISION	
NO.	

DATE	
BY	
REVISION	
NO.	
DATE	
BY	
REVISION	
NO.	
DATE	
BY	
REVISION	
NO.	



ENGINEERING
RESOURCE
ASSOCIATES, INC.
CONSULTING ENGINEERS, SCIENTISTS
& SURVEYORS

USER NAME = rhanter
FILE NAME = V:\Irrigation\120701_00 Madison Street
PLOT SCALE = 4SCALE
PLOT DATE = 12/13/2012

DESIGNED - BD
DRAWN - RT
CHECKED - SW
DATE - 10 19 12

REVISED - ---
REVISED - ---
REVISED - ---
REVISED - ---

**STATE OF ILLINOIS
DEPARTMENT OF TRANSPORTATION**

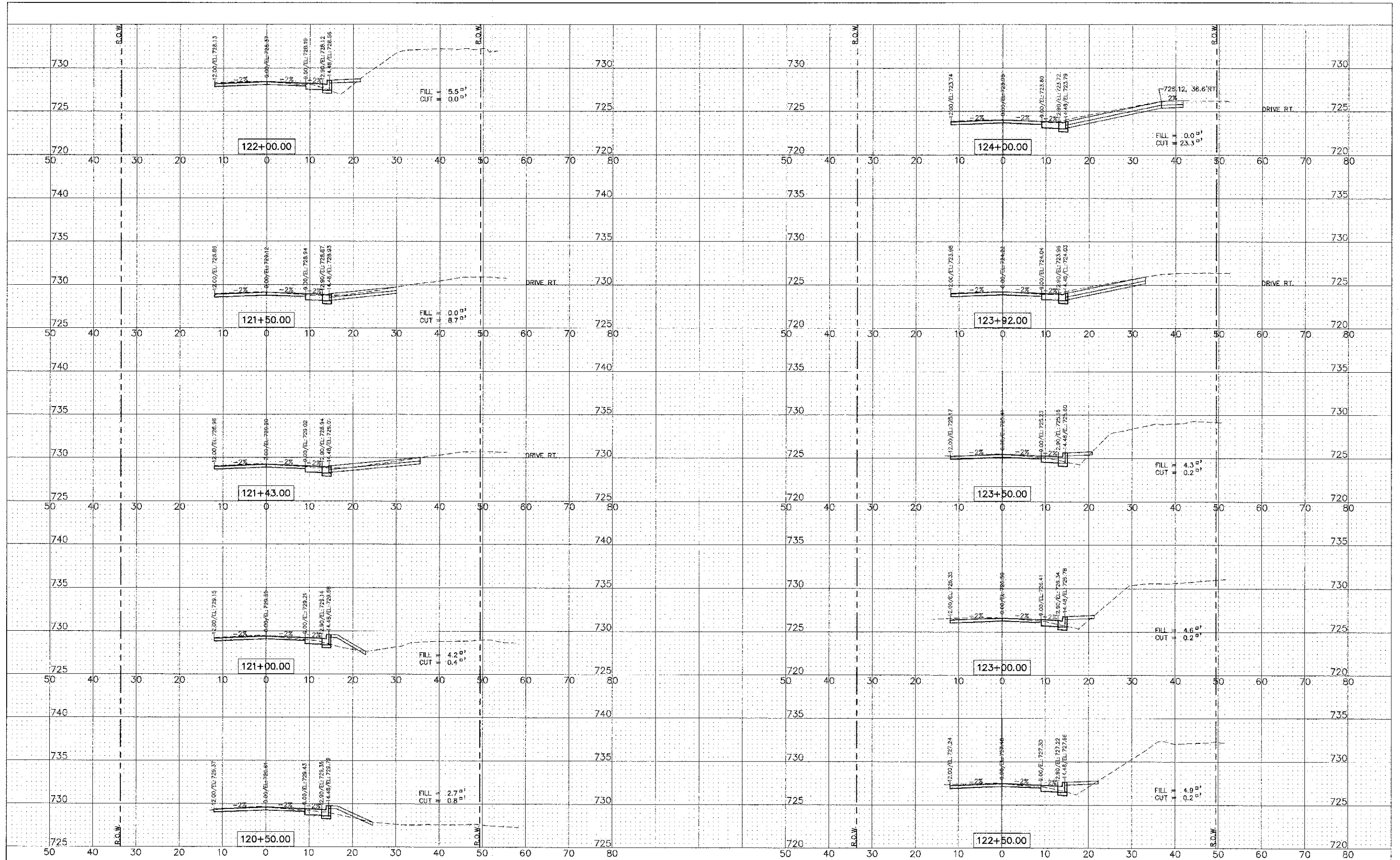
**MADISON STREET
CROSS SECTIONS**

SCALE: 1"=40' H=5' V SHEET NO. 1 OF 3 SHEETS STA. 117+00 TO STA. 120+00

F.A.U. RTE.	SECTION	COUNTY	TOTAL SHEETS	SHEET NO.
2674	II-0045-00-RS	DUPAGE	20	12
CONTRACT NO. 63784				
FED. ROAD DIST. NO. ILLINOIS FED. AID PROJECT				

PLAN	SURVEYED	DATE
NOTE BOOK	ALIGNED	BY
NO.	NO.	

PROFILE	SURVEYED	DATE
NOTE BOOK	GRADES CHECKED	BY
NO.	NO.	



ENGINEERING RESOURCE ASSOCIATES, INC.
CONSULTING ENGINEERS, SURVEYORS & SURVEYORS

USER NAME = rtonner	DESIGNED - BD	REVISED -
FILE NAME = \\s\br\fdp\12070100\Madison Street	DRAWN - RT	REVISED -
LAYOUT\CADD\120701\Modiscop X-Section.dwg	CHECKED - SW	REVISED -
PLOT SCALE = #SCALE#	DATE - 10-9-12	REVISED -
PLOT DATE = 12/13/2012		

**STATE OF ILLINOIS
DEPARTMENT OF TRANSPORTATION**

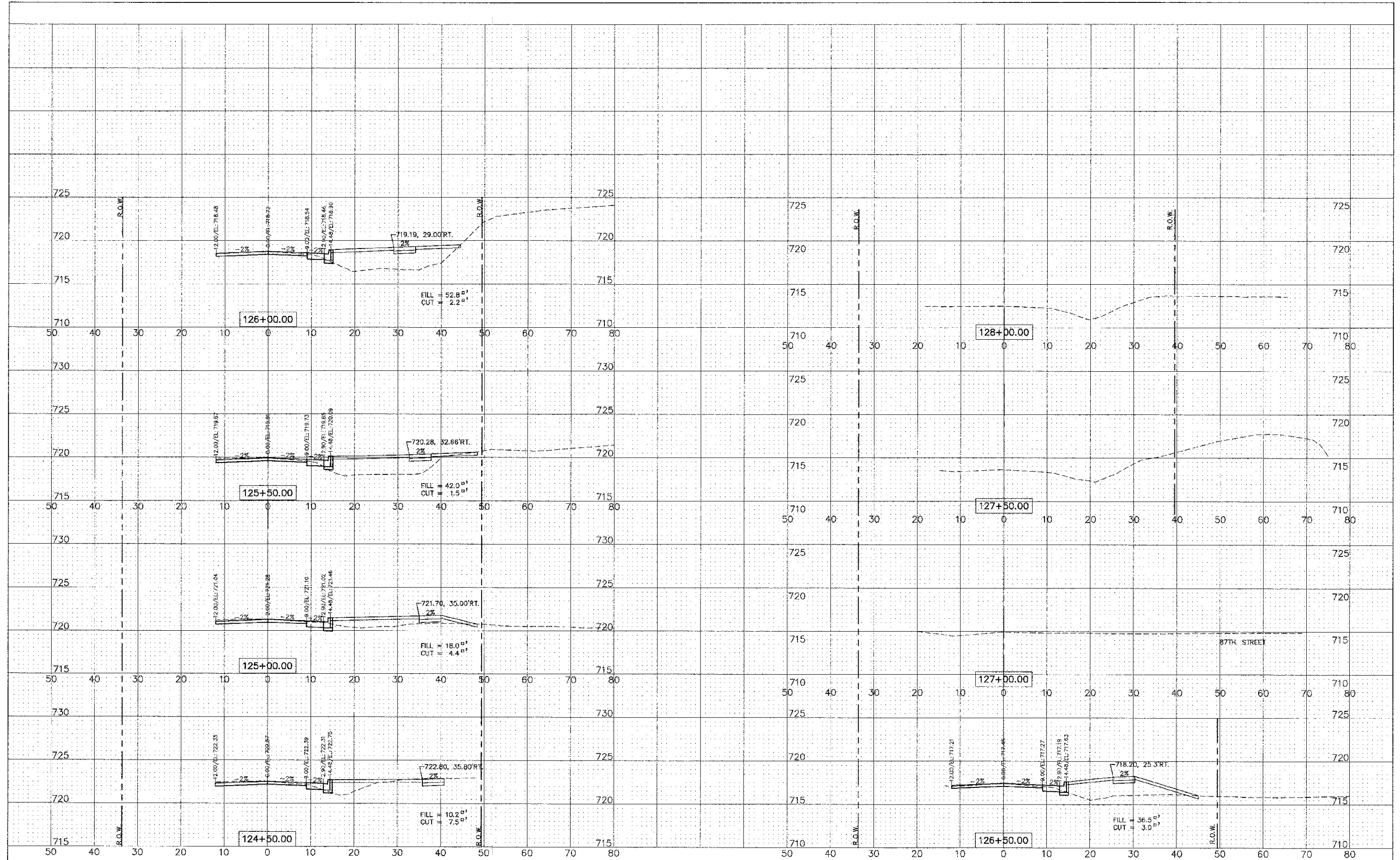
**MADISON STREET
CROSS SECTIONS**

F.A.L. R.E.L.	SECTION	COUNTY	TOTAL SHEETS
2674	11 004S 00-3S	DUPAGE	20 13
CONTRACT NO. 63784			
FED. ROAD DIST. NO. 1 ILLINOIS FED. AID PROJECT			

SCALE: 1"=10'-0"=5'V SHEET NO. 2 OF 3 SHEETS STA. 120+50 TO STA. 124+00

DATE: _____
 BY: _____
 PLAN SURVEYED _____
 IN COMMENT CHECKED _____
 NOTE BOOK NO. _____
 RT. OF FILE CHECKED _____
 NO. _____
 100 FILE NAME _____

DATE: _____
 BY: _____
 PROFILE SURVEYED _____
 CHECKED _____
 IN COMMENT CHECKED _____
 NOTE BOOK NO. _____
 STRUCTURE NOTATIONS: _____



ENGINEERING RESOURCE ASSOCIATES, INC.
 CONSULTING ENGINEERS, ARCHITECTS & SURVEYORS

USER NAME: ranner
 FILE NAME: W:\V\12070100 Madison Street
 LAFOV\CAD\120701 Madison X-Section.dwg
 PLOT SCALE: #SCALE#
 PLOT DATE: 12/14/2012

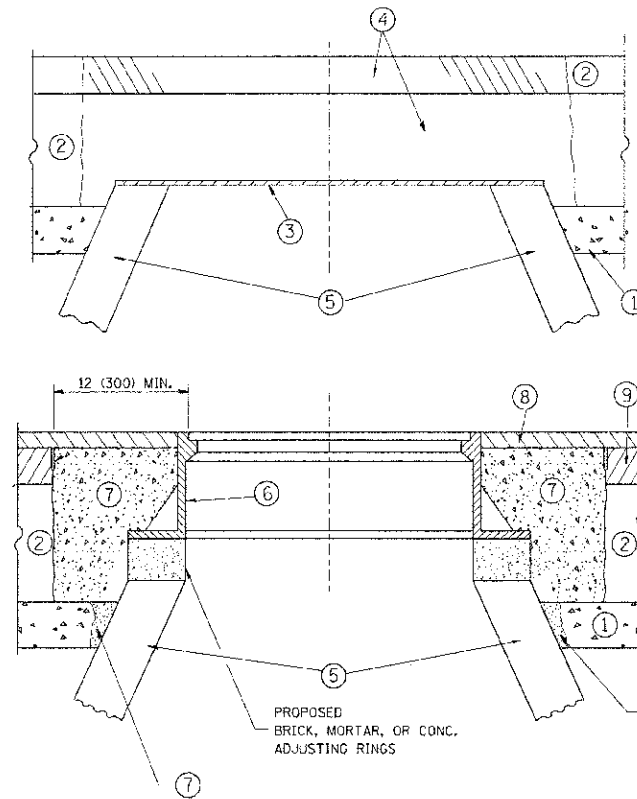
DESIGNED: BD
 DRAWN: RT
 CHECKED: SW
 DATE: 10-19-12

STATE OF ILLINOIS
 DEPARTMENT OF TRANSPORTATION

MADISON STREET
 CROSS SECTIONS

SCALE: 1"=10'H=5'V
 SHEET NO. 3 OF 3 SHEETS
 STA. 124+50 TO STA. 128+00

F.A.U. RTE.	SECTION	COUNTY	TOTAL SHEETS
2674	H-0045-00-RS	DUPAGE	20 14
CONTRACT NO. 63784			
FED. ROAD DIST. NO. ILLINOIS FED. AID PROJECT			



CONSTRUCTION PROCEDURES

STAGE 1 (BEFORE PAVEMENT MILLING)

- A) REMOVE A MINIMUM OF 12 (300) OF THE PAVEMENT FROM AROUND THE STRUCTURE.
- B) REMOVE THE EXISTING FRAME AND LID FROM THE STRUCTURE.
- C) COVER THE STRUCTURE OPENING WITH A 36 (900) DIAMETER METAL PLATE.
- D) BACKFILL WITH CRUSHED STONE AND A MINIMUM 1/2 (40) THICK HMA SURFACE MIX APPROVED BY THE ENGINEER.

STAGE 2 (AFTER PAVEMENT MILLING)

- A) REMOVE THE HMA SURFACE MIX AND CRUSHED STONE.
- B) INSTALL THE FRAME AND LID; ADJUST THE FRAME TO ITS FINAL SURFACE ELEVATION.
- C) THE SURROUNDING SPACE SHALL BE FILLED WITH CLASS PP-1* CONCRETE TO THE ELEVATION OF THE SURFACE OF THE EXISTING BASE COURSE OR THE BINDER COURSE.

* UNLESS OTHERWISE SPECIFIED IN THE PLANS.

THE PROCEDURE EXPLAINED ABOVE SHALL CONFORM TO THE APPLICABLE PORTIONS OF SECTIONS 353, 406, 602, AND 603 OF THE STANDARD SPECIFICATIONS EXCEPT THAT "THE CONTRACTOR SHALL ADJUST THE STRUCTURES TO THE FINISHED PAVEMENT ELEVATION NO MORE THAN 5 CALENDAR DAYS PRIOR TO PLACEMENT OF THE FINAL LIFT OF SURFACE UNLESS APPROVED BY THE ENGINEER."

LEGEND

- ① SUB-BASE GRANULAR MATERIAL
- ② EXISTING PAVEMENT
- ③ 36 (900) DIAMETER METAL PLATE
- ④ PROPOSED CRUSHED STONE AND HMA SURFACE MIX
- ⑤ EXISTING STRUCTURE
- ⑥ FRAME AND LID (SEE NOTES)
- ⑦ CLASS PP-1* CONCRETE
- ⑧ PROPOSED HMA SURFACE COURSE
- ⑨ PROPOSED HMA BINDER COURSE

LOCATION OF STRUCTURES:

THE CONTRACTOR WILL BE REQUIRED TO KEEP A RECORD OF THE LOCATIONS OF THE BURIED STRUCTURES ACCORDING TO THE STATION AND DISTANCE LEFT OR RIGHT OF THE CENTERLINE OF PAVEMENT. UPON COMPLETION OF THE WORK, THE CONTRACTOR WILL DELIVER THE RECORD TO THE ENGINEER.

BASIS OF PAYMENT:

REMOVING FRAMES AND LIDS ON DRAINAGE AND UTILITY STRUCTURES IN THE PAVEMENT PRIOR TO MILLING, AND ADJUSTING TO FINAL GRADE PRIOR TO PLACING THE SURFACE COURSE, WILL BE PAID FOR AT THE CONTRACT UNIT PRICE EACH FOR "FRAMES AND LIDS TO BE ADJUSTED (SPECIAL)."

THIS WORK WILL NOT BE PAID FOR WHEN DRAINAGE AND UTILITY STRUCTURES ARE SPECIFIED FOR PAYMENT AS STRUCTURE RECONSTRUCTION.

NEW FRAMES AND LIDS, WHEN SPECIFIED, WILL BE PAID FOR SEPARATELY.

NOTES:

EXISTING BROKEN FRAMES AND LIDS SHALL BE REMOVED AND DISPOSED OF BY THE CONTRACTOR AND SHALL BE REPLACED AS DIRECTED BY THE ENGINEER. REPLACEMENT FRAMES AND LIDS WILL BE PAID FOR IN ACCORDANCE WITH ARTICLE 109.04 OF THE STANDARD SPECIFICATIONS UNLESS A SEPARATE PAY ITEM HAS BEEN PROVIDED.

IF THE EXISTING LIDS ARE OPEN, THE FRAME WILL BE ADJUSTED TO THE ELEVATION OF THE MILLED PAVEMENT SURFACE PRIOR TO THE MILLING OPERATION. THE FRAME WILL NOT BE REMOVED AND COVERED BY THE METAL PLATE.

CITY OF CHICAGO CASTINGS ARE THE PROPERTY OF THE CITY AND THE CONTRACTOR SHALL NOTIFY THE CITY FOR REMOVAL AND DISPOSITION OF THE CASTINGS.

THE METAL PLATE USED TO COVER THE STRUCTURE SHALL REMAIN THE PROPERTY OF THE CONTRACTOR.

WHEN STRUCTURES ARE TO BE ADJUSTED OR RECONSTRUCTED, THE LOWERING AND RAISING OF THE FRAMES AND LIDS WILL NOT BE PAID FOR SEPARATELY BUT WILL BE INCLUDED IN THE COST OF THE CORRESPONDING PAY ITEM.

DETAILS FOR FRAMES AND LIDS ADJUSTMENT WITH MILLING

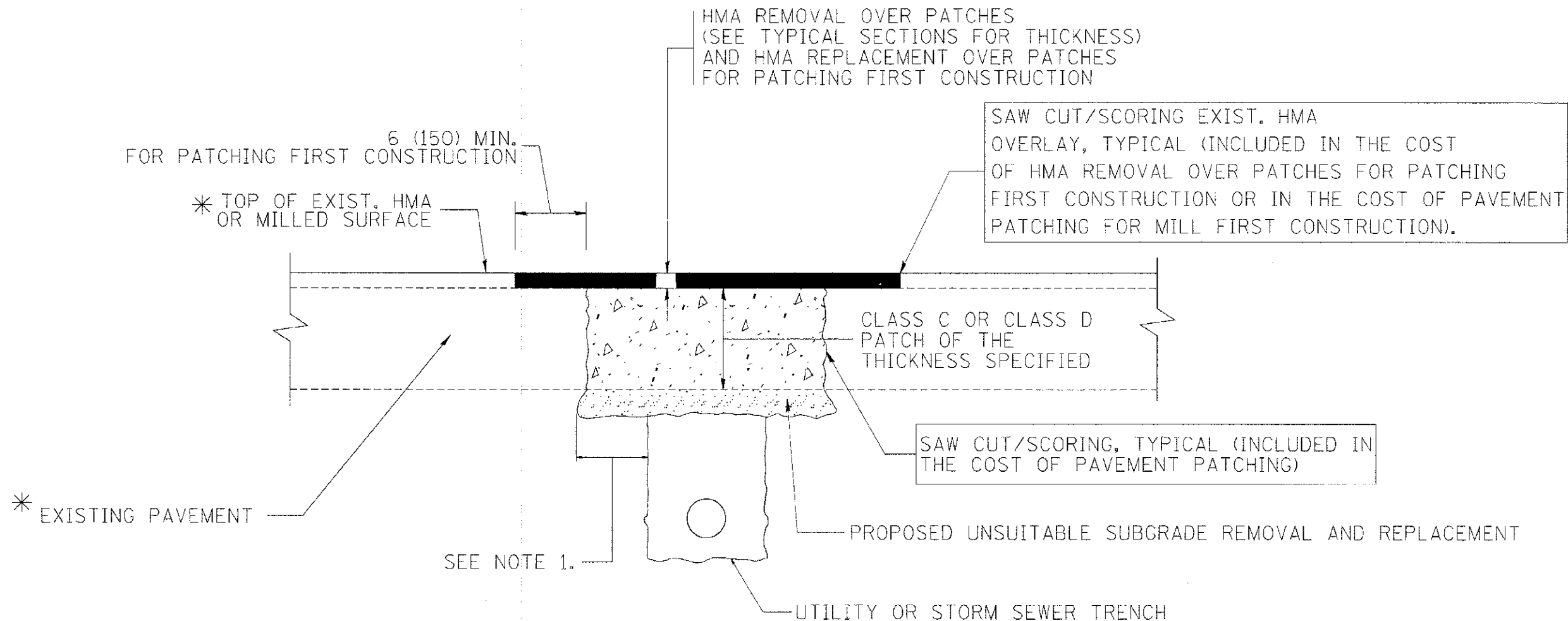
ALL DIMENSIONS ARE IN INCHES (MILLIMETERS) UNLESS OTHERWISE SHOWN

FILE NAME	USER NAME * beuser	DESIGNED - R. SHAH	REVISED - R. WIEDEMAN 05-14-04
ca:\pwork\spw\rdc\shah\rdc\10315\pr08.dgn		DRAWN -	REVISED - R. BORO 01-01-07
		CHECKED -	REVISED - R. BORO 03-09-11
		DATE - 10-25-94	REVISED - R. BORO 12-06-11

**STATE OF ILLINOIS
DEPARTMENT OF TRANSPORTATION**

**DETAILS FOR
FRAMES AND LIDS ADJUSTMENT WITH MILLING**

SCALE: NONE	SHEET NO. 1 OF 1 SHEETS	STA. TO STA.	F.A. R. L.	SECTION	COUNTY	TOTAL SHEETS	SHEET NO.
			2674	11-00045-00-PS	DUPAGE	20	15
				BD600-03 (BD-8)			CONTRACT NO. 63784
			FED. ROAD DIST. NO. ; ILLINOIS; FED. AID PROJECT				



* SEE TYPICAL SECTIONS FOR THICKNESS AND MATERIALS

NOTES:

1. THE WIDTH OF THE FULL DEPTH PATCH OVER A TRENCH SHALL BE 12 (300) WIDER ON EACH SIDE OF THE TRENCH.
2. FOR METHOD OF MEASUREMENT AND BASIS OF PAYMENT, SEE RECURRING SPECIAL PROVISION "PATCHING WITH HOT-MIX ASPHALT OVERLAY REMOVAL".

SEQUENCE OF CONSTRUCTION (PATCHING FIRST)

1. REMOVE THE EXISTING HMA MATERIAL OVER THE AREA TO BE PATCHED.
2. REMOVE AND REPLACE WITH CLASS C OR D PATCH.
3. REPLACE HMA MATERIAL OVER THE AREA TO BE PATCHED.

SEQUENCE OF CONSTRUCTION (MILLING FIRST)

1. MILL HMA FIRST IF THERE IS AT LEAST 4 1/2 INCHES OR MORE OF HMA MATERIAL ON TOP OF THE EXISTING PAVEMENT OR IF THE PAVEMENT IS FULL DEPTH HMA. A MINIMUM OF 2 INCHES OF HMA MATERIAL SHALL BE IN PLACE AFTER MILLING.
2. REMOVE AND REPLACE WITH FULL DEPTH CLASS D PATCHES TO TOP OF MILLED SURFACE.

ALL DIMENSIONS ARE IN INCHES (MILLIMETERS) UNLESS OTHERWISE SHOWN.

FILE NAME : c:\projects\dststd22x34\bd22.dgn	USER NAME : bauerj	DESIGNED - R. SHAH	REVISED - A. ABBAS 04-27-98	STATE OF ILLINOIS DEPARTMENT OF TRANSPORTATION	PAVEMENT PATCHING FOR HMA SURFACED PAVEMENT		F.A. RTE.	SECTION	COUNTY	TOTAL SHEETS	SHEET NO.	
		DRAWN -	REVISED - R. BORO 01-01-07		SCALE: NONE	SHEET NO. 1 OF 1 SHEETS	STA.	TO STA.	2&74	11-00045-00-25	DUPAGE	20 16
		PLOT SCALE = 50,000' / IN.	REVISED - R. BORO 09-04-07						BD400-04 (BD-22)		CONTRACT NO. 63784	
		PLOT DATE = 10/27/2009	REVISED - K. ENG 10-27-08						FED. ROAD DIST. NO. 1 ILLINOIS FED. AID PROJECT			

VARIABLE - TO MEET EXISTING DIMENSIONS AND FIELD CONDITIONS (SEE NOTE ②)

PROP. CONC. CURB OR CURB AND GUTTER REPLACEMENT IN ACCORDANCE WITH STATE STANDARD 606001. (SEE NOTE ②)

SAW CUT FULL DEPTH - INCLUDED IN THE COST OF SIDEWALK, DRIVEWAY OR MEDIAN SURFACE REMOVAL PAY ITEM.

SEE STATE STANDARD 606001

18" (450) MAX.

EXISTING OR PROPOSED HMA SURFACE (IF APPLICABLE)

1/4" (5) **

EXISTING SIDEWALK, DRIVEWAY, MEDIAN SURFACE, SOD OR GROUND.

PROPOSED SIDEWALK, DRIVEWAY PAVEMENT, MEDIAN SURFACE OR SODDING SALT TOLERANT WITH TOP SOIL, 4" (100) SOD RESTORATION (SEE NOTE ①).

EXISTING CONCRETE PAVEMENT, CONCRETE BASE COURSE OR FLEXIBLE PAVEMENT

3" (75) MIN.

SUITABLE BACKFILL MATERIAL (INCLUDED IN THE COST OF CURB OR CURB AND GUTTER REMOVAL AND REPLACEMENT)

PROPOSED 3/4" (20) PREFORMED EXPANSION JOINT AT CONCRETE SIDEWALKS, DRIVEWAYS, AND MEDIANS. (INCLUDED IN THE COST OF CURB OR CURB AND GUTTER REMOVAL AND REPLACEMENT.)

* 3" (75) MINIMUM FROM TOP AND BOTTOM OF THE CONCRETE PAVEMENT OR BASE COURSE.

** IF THE FINAL SURFACE OF THE PAVEMENT IS CONCRETE, THE GUTTER IS TO BE FLUSH WITH THE PAVEMENT.

UNSUITABLE SUB-BASE MATERIAL TO BE REMOVED, IF DIRECTED BY THE ENGINEER, SHALL BE REPLACED WITH EITHER SUB-BASE GRANULAR MATERIAL, TYPE 3 OR ADDITIONAL THICKNESS OF CONCRETE.

NOTE: ① SIDEWALK, DRIVEWAY PAVEMENT OR MEDIAN SURFACE SHALL BE SIMILAR TO THE MATERIAL BEING REMOVED AND WILL BE PAID FOR SEPARATELY.

SODDING, SALT TOLERANT AND TOP SOIL, FURNISH AND PLACE 4" WILL BE PAID FOR SEPARATELY.

REMOVAL AND REPLACEMENT 4" (100) OR LESS IS INCLUDED IN THE COST OF CURB OR CURB AND GUTTER REMOVAL AND REPLACEMENT.

② FERTILIZER FOR THE PLACEMENT OF THE SOD IS NOT REQUIRED

③ CURB OR CURB AND GUTTER REPLACEMENT SHALL MATCH THE SHAPE OF THE EXISTING CURB OR CURB AND GUTTER UNLESS OTHERWISE SPECIFIED.

REMOVAL AND REPLACEMENT IN EXCESS OF 4" (100) WILL BE PAID FOR IN ACCORDANCE WITH ARTICLE 109.04 OF THE STANDARD SPECIFICATIONS.

④ FOR CURB OR CURB AND GUTTER REMOVAL AND REPLACEMENT ADJACENT TO FLEXIBLE PAVEMENT DELETE EPOXY COATED TIE BARS.

PROPOSED #6 (20) EPOXY COATED TIE BARS 24" (600) LONG AT 24" (600) CENTERS WILL NOT BE PAID FOR SEPARATELY. DELETE EPOXY COATED TIE BARS IF EXISTING TIE BARS ARE USUABLE AS DETERMINED BY THE ENGINEER. (SEE NOTE ③).

⑤ LONGITUDINAL BARS, IF ENCOUNTERED IN THE EXISTING CURB OR CURB AND GUTTER, ARE NOT TO BE REPLACED. CUTTING AND REMOVING LONGITUDINAL BARS SHALL BE INCLUDED IN THE COST OF CURB OR CURB AND GUTTER REMOVAL AND REPLACEMENT.

⑥ THE COST OF HMA SURFACE REMOVAL IN THE EXISTING GUTTER FLAG SHALL BE INCLUDED IN THE COST OF THE CURB AND GUTTER REMOVAL AND REPLACEMENT.

BASIS OF PAYMENT:

THIS WORK WILL BE PAID FOR AT THE CONTRACT UNIT PRICE PER FOOT (METER) FOR "CURB REMOVAL AND REPLACEMENT" OR "COMBINATION CONCRETE CURB AND GUTTER REMOVAL AND REPLACEMENT".

⑦ THE REMOVAL AND REPLACEMENT OF THE EXISTING CURB OR CURB AND GUTTER SHALL BE DONE IN ACCORDANCE WITH THE APPLICABLE PORTIONS OF SECTION 440 AND 606 OF THE STANDARD SPECIFICATIONS.

⑧ THE LOCATIONS OF REMOVAL AND REPLACEMENT OF EXISTING CURB OR CURB AND GUTTER SHALL BE DETERMINED BY THE RESIDENT ENGINEER AT THE TIME OF CONSTRUCTION.

CURB OR CURB AND GUTTER REMOVAL AND REPLACEMENT

ALL DIMENSIONS ARE IN INCHES (MILLIMETERS) UNLESS OTHERWISE SHOWN.

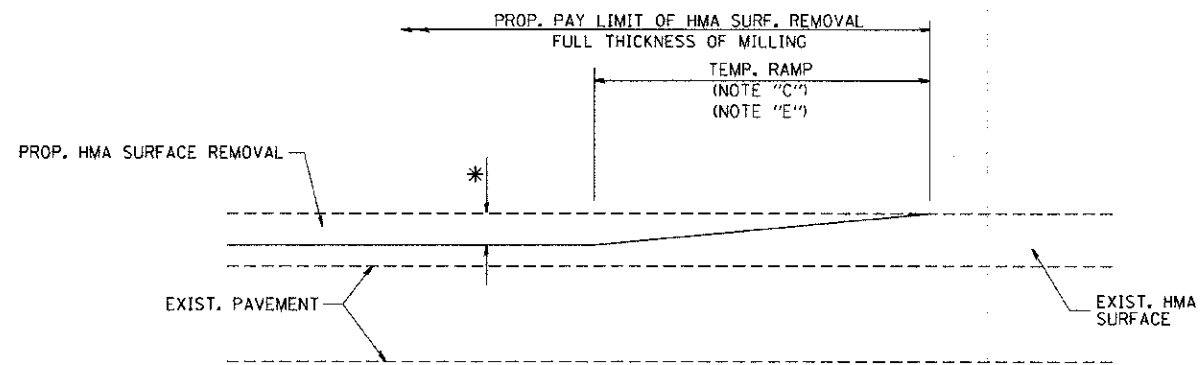
FILE NAME : c:\p\work\p\p\dot\drivakasn\20120318\5424.dgn	USER NAME : drivakasn	DESIGNED : A. HOJSEH	REVISED : R. SHAH 10-03-96
		DRAWN : -	REVISED : A. ABBAS 03-21-97
	PLOT SCALE = 50,000 / 1" = 1'	CHECKED : -	REVISED : M. GOMEZ 01-22-01
	PLOT DATE = 12/15/2009	DATE : 03-11-94	REVISED : R. BORO 12-15-09

STATE OF ILLINOIS
DEPARTMENT OF TRANSPORTATION

CURB OR CURB AND GUTTER
REMOVAL AND REPLACEMENT

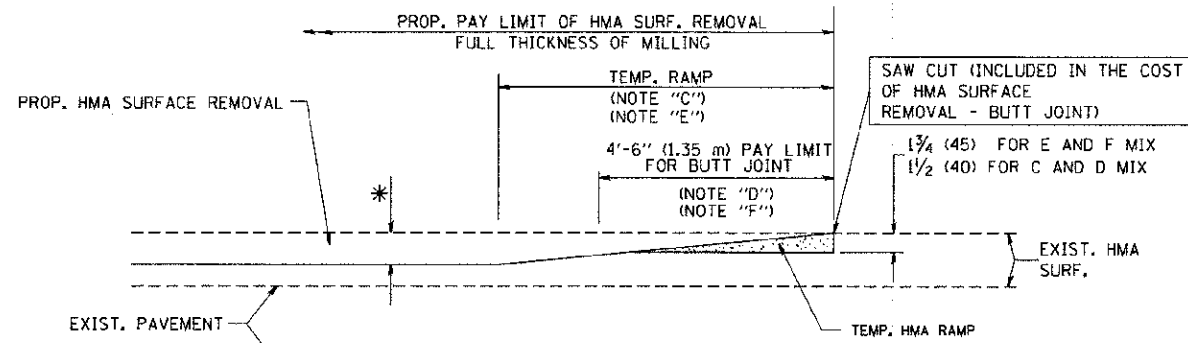
SCALE: NONE SHEET NO. 1 OF 1 SHEETS STA. TO STA.

F.A. RTE.	SECTION	COUNTY	TOTAL SHEETS	SHEET NO.
2674	11-00046-00-05	DUPAGE	20	17
BD600-06 (BD-24)			CONTRACT NO. 63784	
FED. ROAD DIST. NO. 1 ILLINOIS FED. AID PROJECT				



MILLED TEMPORARY RAMP
(FOR BUTT JOINT AND HMA TAPER SEE DETAIL BELOW)

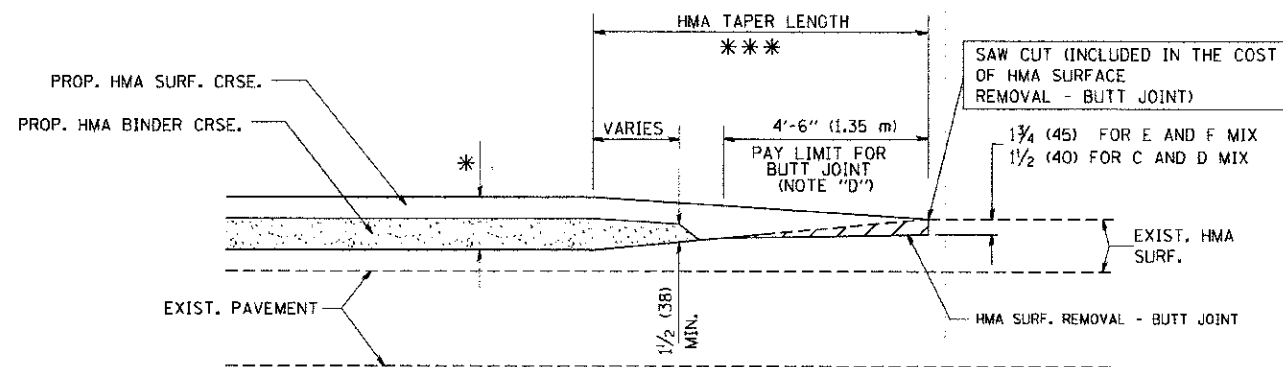
OPTION 1



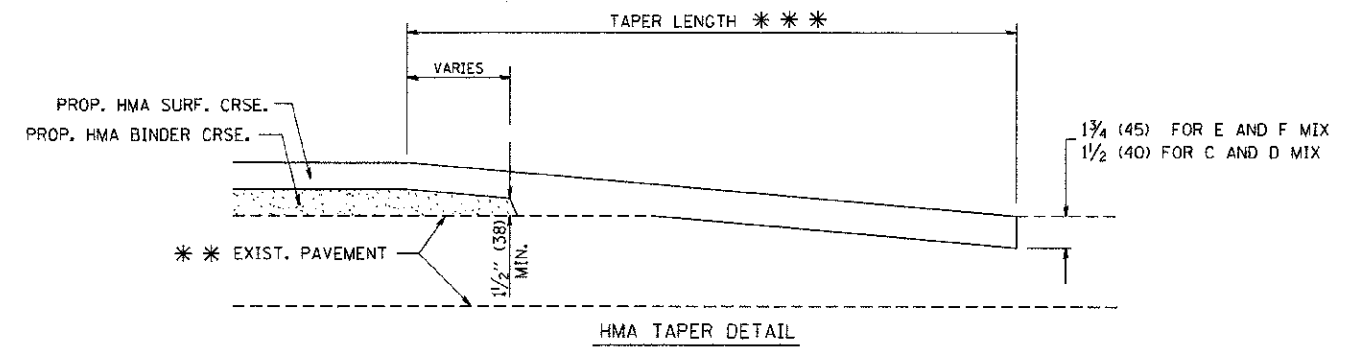
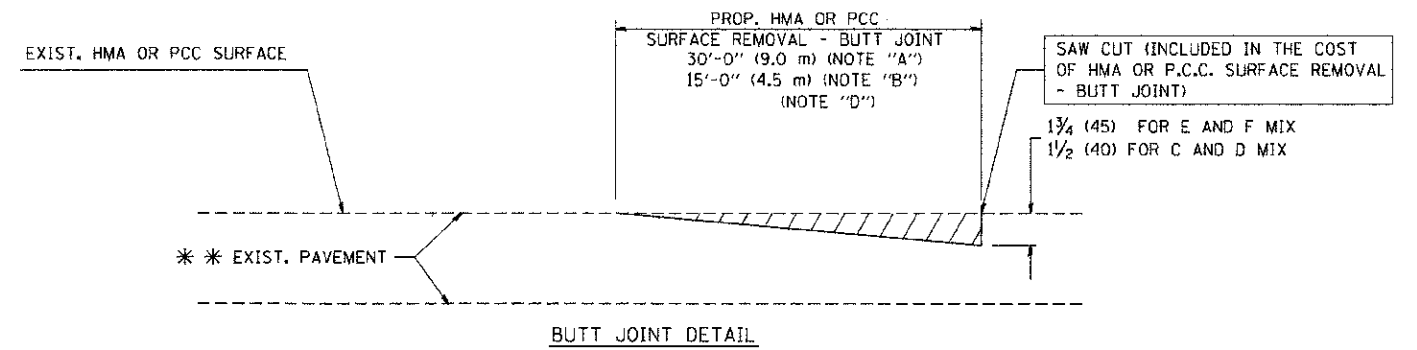
HMA CONSTRUCTED TEMPORARY RAMP
(FOR BUTT JOINT AND HMA TAPER SEE DETAIL BELOW)

OPTION 2

TYPICAL TEMPORARY RAMP



TYPICAL BUTT JOINT AND HMA TAPER
FOR MILLING AND RESURFACING



TYPICAL BUTT JOINT AND HMA TAPER
FOR RESURFACING ONLY

** PC CONCRETE, HMA OR HMA RESURFACED PAVEMENT.

NOTES

- A: MAINLINE ROADWAYS AND MAJOR SIDE ROADS.
 - B: MINOR SIDE ROADS.
 - C: THE TEMP. RAMP SHALL BE CONSTRUCTED IMMEDIATELY UPON REMOVAL OF THE EXISTING HMA SURFACE.
 - D: THE BUTT JOINT SHALL BE CONSTRUCTED IMMEDIATELY PRIOR TO PLACING THE PROPOSED HMA COURSES.
 - E: TAPER THE TEMP. RAMP AT A RATE OF 3'-0" (900 mm) PER 1 INCH (25 mm) OF MILLING THICKNESS.
 - F: INSTALLATION AND REMOVAL OF THE 4'-6" (1.35 m) TEMP. RAMP IS INCLUDED IN COST OF HMA SURFACE REMOVAL - BUTT JOINT
 - G: SEE ARTICLE 406.08 AND 406.14 OF THE STANDARD SPECIFICATIONS FOR "HMA AND/OR PCC SURFACE REMOVAL, BUTT JOINT".
- * SEE TYPICAL SECTIONS FOR MILLING THICKNESS.
- *** 20'-0" (6.1 m) PER 1 (25) RESURFACING (NOTE "A")
10'-0" (3.0 m) PER 1 (25) RESURFACING (NOTE "B")

BASIS OF PAYMENT:

THE BUTT JOINT WILL BE PAID FOR AT THE CONTRACT UNIT PRICE PER SQUARE YARD (SQUARE METER) FOR "HOT-MIX ASPHALT SURFACE REMOVAL - BUTT JOINT" OR FOR "PORTLAND CEMENT CONCRETE SURFACE REMOVAL - BUTT JOINT".

ALL DIMENSIONS ARE IN INCHES (MILLIMETERS) UNLESS OTHERWISE SHOWN.

FILE NAME =
W:\ndr\std\22x34\bd32.dgn

USER NAME = goglorob
PLOT SCALE = 3/8" = 1' / IN.
PLOT DATE = 1/4/2008

DESIGNED - M. DE YONG
DRAWN -
CHECKED -
DATE - 06-13-90

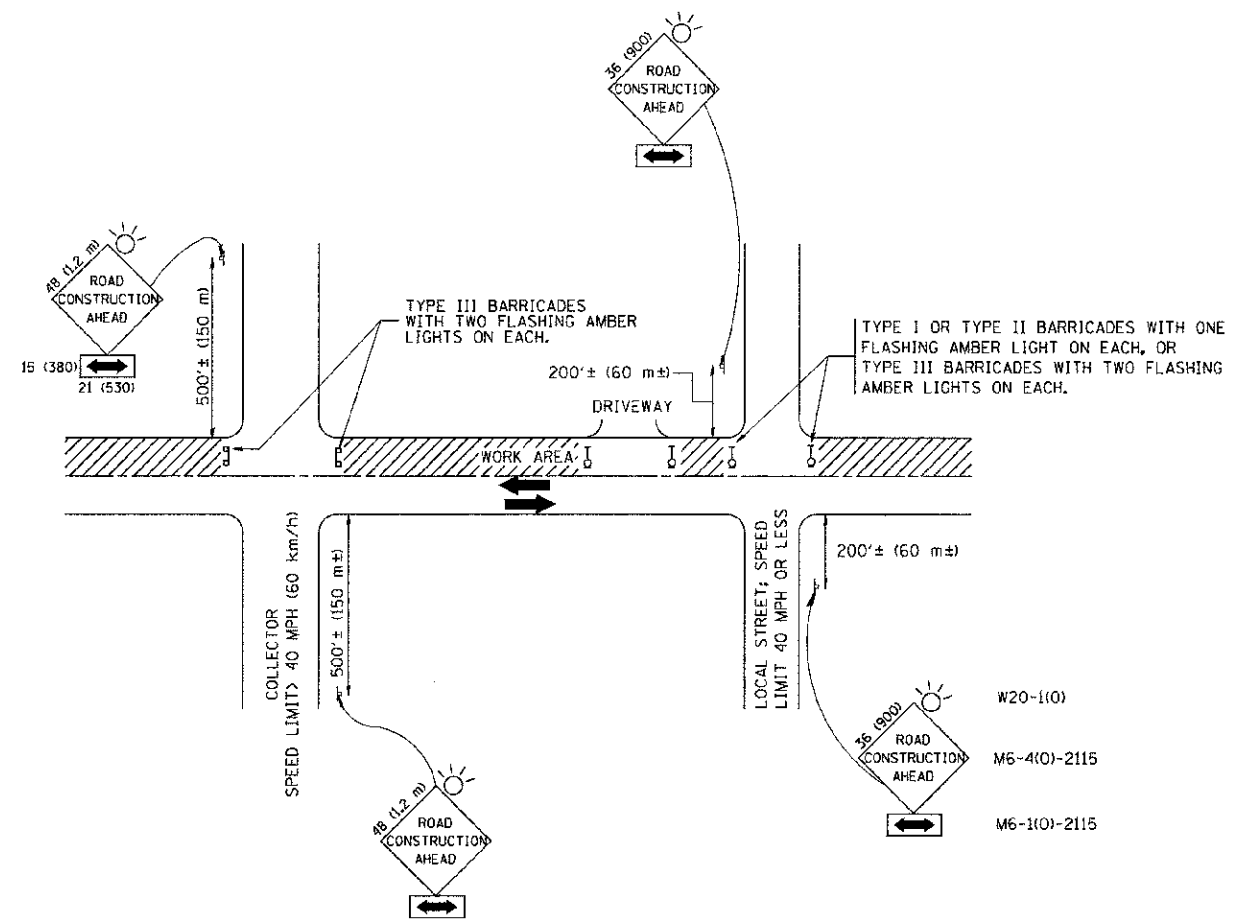
REVISED - R. SHAH 10-25-94
REVISED - A. ABBAS 03-21-97
REVISED - M. GOMEZ 04-06-01
REVISED - R. BORO 01-01-07

STATE OF ILLINOIS
DEPARTMENT OF TRANSPORTATION

BUTT JOINT AND
HMA TAPER DETAILS

SCALE: NONE SHEET NO. 1 OF 1 SHEETS STA. TO STA.

F.A. RTE.	SECTION	COUNTY	TOTAL SHEETS	SHEET NO.
2674	11-00045-00-25	DUPAGE	20	18
BD400-05 BD32		CONTRACT NO. 63784		
FED. ROAD DIST. NO. 1 ILLINOIS FED. AID PROJECT				



TRAFFIC CONTROL AND PROTECTION FOR SIDE ROADS, INTERSECTIONS, AND DRIVEWAYS

NOTES:

- A. FOR NO LANE RESTRICTION ON THE SIDE ROAD OR DRIVEWAYS
 1. SIDE ROAD WITH A SPEED LIMIT OF 40 MPH (60 km/h) OR LESS AS SHOWN ON THE DRAWING AND AS DIRECTED BY THE ENGINEER:
 - a) ONE ROAD CONSTRUCTION AHEAD SIGN 36 x 36 (900x900) WITH A FLASHER AND FLAG MOUNTED ON IT APPROXIMATELY 200' (60 m) IN ADVANCE OF THE MAIN ROUTE.
 - b) THE CLOSED PORTION OF THE MAIN ROUTE SHALL BE PROTECTED BY BLOCKING WITH TYPE I, TYPE II OR TYPE III BARRICADES, 1/3 OF THE CROSS SECTION OF THE CLOSED PORTION.
 2. SIDE ROAD WITH A SPEED LIMIT GREATER THAN 40 MPH (60 km/h) AS SHOWN ON THE DRAWING AND AS DIRECTED BY THE ENGINEER:
 - a) ONE ROAD CONSTRUCTION AHEAD SIGN 48 x 48 (1,2 m x 1,2 m) WITH A FLASHER MOUNTED ON IT APPROXIMATELY 500' (150 m) IN ADVANCE OF THE MAIN ROUTE.
 - b) THE CLOSED PORTION OF THE MAIN ROUTE SHALL BE PROTECTED BY BLOCKING WITH TYPE III BARRICADES, 1/2 OF THE CROSS SECTION OF THE CLOSED PORTION.
 3. WHEN THE SIDE ROAD LIES BETWEEN THE BEGINNING OF THE MAINLINE SIGNING AND THE WORK ZONE, A SINGLE HEADED ARROW (M6-1) SHALL BE USED IN LIEU OF THE DOUBLE HEADED ARROW (M6-4).
- B. FOR A LANE CLOSURE ON A SIDE ROAD OR DRIVEWAY:

USE APPLICABLE PORTIONS OF THE TYPICAL APPLICATION OF TRAFFIC CONTROL DEVICES (STD. 701501, STD. 701606 OR THE APPROPRIATE STANDARD). THE SPACING OF SIGNS AND BARRICADES SHALL BE ADJUSTED FOR FIELD CONDITIONS AS DIRECTED BY THE ENGINEER. THE DIRECTIONAL ARROW SHALL BE COVERED OR REMOVED WHEN NO LONGER CONSISTENT WITH THE SIDE ROAD LANE CLOSURE.
- C. ADVANCE WARNING SIGNS ARE TO BE OMITTED ON DRIVEWAY UNLESS OTHERWISE NOTED.
- D. THE TRAFFIC CONTROL AND PROTECTION FOR SIDE ROADS, INTERSECTIONS, AND DRIVEWAYS SHALL BE INCIDENTAL TO THE COST OF SPECIFIED TRAFFIC CONTROL STANDARDS OR ITEMS.

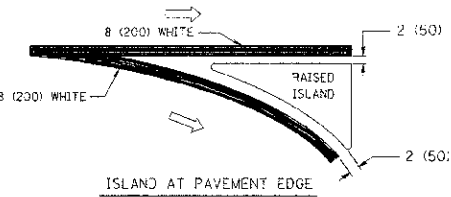
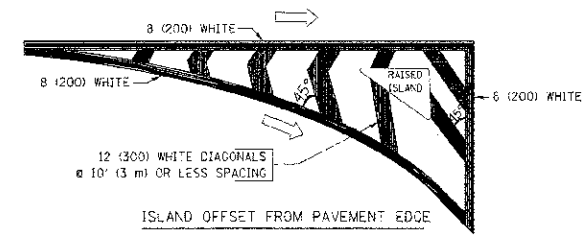
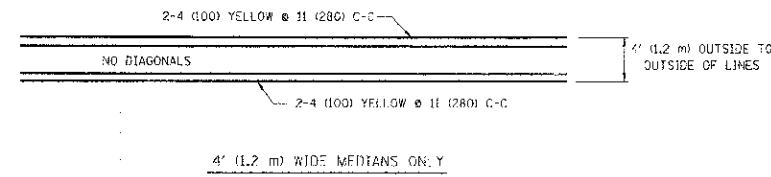
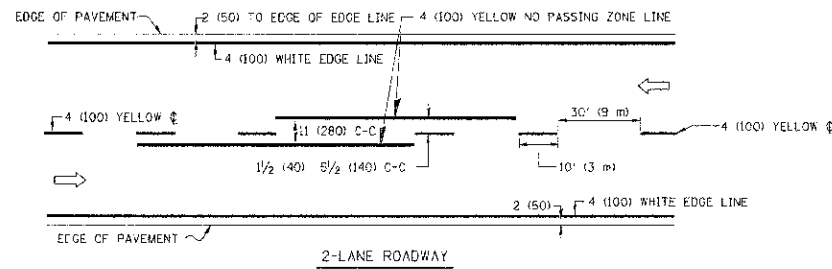
All dimensions are in millimeters (inches) unless otherwise shown.

FILE NAME *	USER NAME *	DESIGNED -	REVISED -
W:\detroit\22v34\to10.dgn	gaglianobt	LHA	J. OBERLE 10-18-95
		DRAWN -	REVISED -
			A. HOUSEH 03-06-96
		CHECKED -	REVISED -
			A. HOUSEH 10-15-96
		DATE -	REVISED -
		06-89	T. RAMMACHER 01-06-00

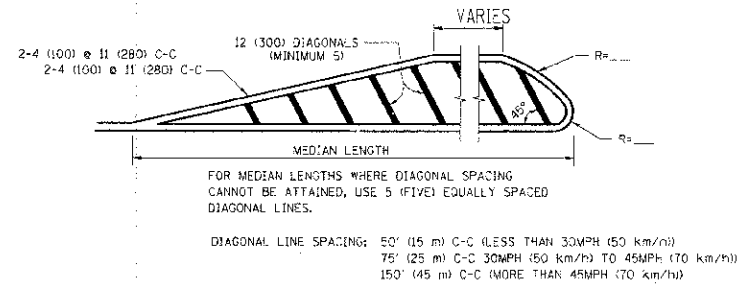
STATE OF ILLINOIS
DEPARTMENT OF TRANSPORTATION

TRAFFIC CONTROL AND PROTECTION FOR SIDE ROADS, INTERSECTIONS, AND DRIVEWAYS	
SCALE: NONE	SHEET NO. 1 OF 1 SHEETS STA. TO STA.

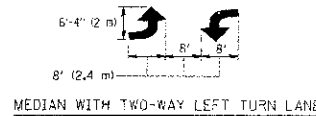
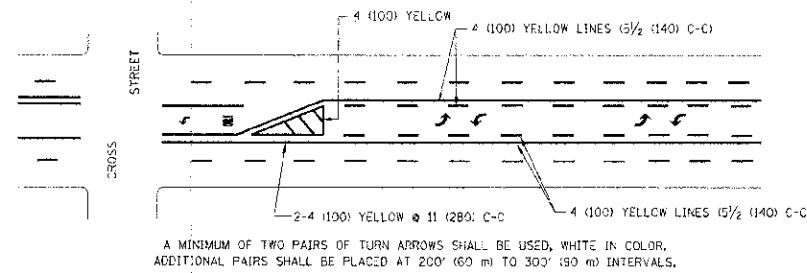
F.A. RTE.	SECTION	COUNTY	TOTAL SHEETS	SHEET NO.
2674	11-00045-00-25	DUPAGE	20	19
TC-10			CONTRACT NO. 63784	
FED. ROAD DIST. NO. 1 ILLINOIS FED. AID PROJECT				



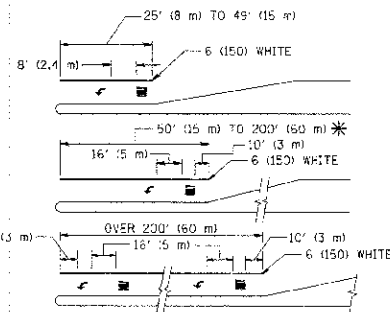
TYPICAL ISLAND MARKING



MEDIANS OVER 4' (1.2 m) WIDE



TYPICAL PAINTED MEDIAN MARKING



FULL SIZE LETTERS 8' (2.4 m) AND ARROWS SHALL BE USED.
* AREA = 15.6 SQ. FT. (4.5 m²) ONLY AREA = 20.8 SQ. FT. (4.9 m²)
* TURN LANES IN EXCESS OF 400' (120 m) IN LENGTH MAY HAVE AN ADDITIONAL SET OF ARROW - "ONLY" INSTALLED MIDWAY BETWEEN THE OTHER TWO SETS OF ARROW - "ONLY".

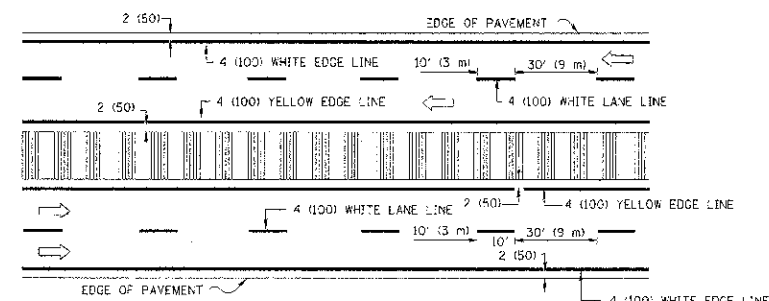
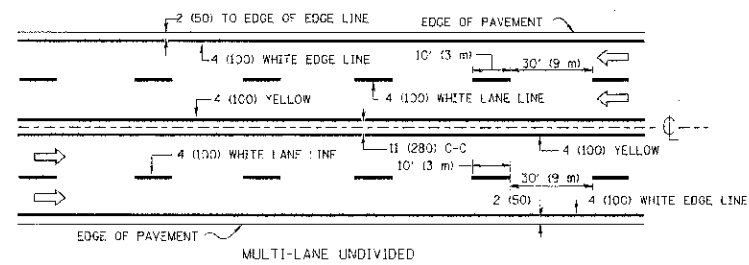
TYPICAL LEFT (OR RIGHT) TURN LANE

TYPICAL TURN LANE MARKING

TYPE OF MARKING	WIDTH OF LINE	PATTERN	COLOR	SPACING / REMARKS
CENTERLINE ON 2 LANE PAVEMENT	4 (100)	SKIP-DASH	YELLOW	10' (3 m) LINE WITH 30' (9 m) SPACE
CENTERLINE ON MULTI-LANE UNDIVIDED PAVEMENT	2 @ 4 (100)	SOLID	YELLOW	11 (280) C-C
NO PASSING ZONE LINES FOR ONE DIRECTION FOR BOTH DIRECTIONS	4 (100) 2 @ 4 (100)	SOLID SOLID	YELLOW YELLOW	5/2 (140) C-C FROM SKIP-DASH CENTERLINE 11 (280) C-C OMIT SKIP-DASH CENTERLINE BETWEEN
LANE LINES	4 (100) 6 (125) ON FREEWAYS	SKIP-DASH SKIP-DASH	WHITE WHITE	10' (3 m) LINE WITH 30' (9 m) SPACE
DOTTED LINES (EXTENSIONS OF CENTER, LANE OR TURN LANE MARKINGS)	SAME AS LINE BEING EXTENDED	SKIP-DASH	SAME AS LINE BEING EXTENDED	2' (600) LINE WITH 6' (1.8 m) SPACE
EDGE LINES	4 (100)	SOLID	YELLOW-LEFT WHITE-RIGHT	OUTLINE MOUNTABLE MEDIANS IN YELLOW; EDGE LINES ARE NOT USED NEXT TO BARRIER CURB
TURN LANE MARKINGS	6 (150) LINE; FULL SIZE LETTERS & SYMBOLS 18" (457 mm)	SOLID	WHITE	SEE TYPICAL TURN LANE MARKING DETAIL
TWO WAY LEFT TURN MARKING	2 @ 4 (100) EACH DIRECTION 8' (2.4 m) LEFT ARROW	SKIP-DASH AND SOLID IN PAIRS	YELLOW WHITE	10' (3 m) LINE WITH 30' (9 m) SPACE FOR SKIP-DASH; 5/2 (140) C-C BETWEEN SOLID LINE AND SKIP-DASH LINE SEE TYPICAL TWO-WAY LEFT TURN MARKING DETAIL
CROSSWALK LINES (PEDESTRIAN) & DIAGONALS (BIKE & EQUESTRIAN) B. LONGITUDINAL BARS (SC-100L)	2 @ 6 (150) 12 (300) @ 45° 12 (300) @ 90°	SOLID SOLID SOLID	WHITE WHITE WHITE	NOT LESS THAN 6' (1.8 m) APART 2' (600) APART 2' (600) APART SEE TYPICAL CROSSWALK MARKING DETAILS.
STOP LINES	24 (600)	SOLID	WHITE	PLACE 4' (1.2 m) IN ADVANCE OF AND PARALLEL TO CROSSWALK, IF PRESENT. OTHERWISE, PLACE AT DESIRED STOPPING POINT, PARALLEL TO CROSSROAD CENTERLINE, WHERE POSSIBLE.
PAINTED MEDIANS	2 @ 4 (100) WITH 12 (300) DIAGONALS @ 45° NO DIAGONALS USED FOR 4' (1.2 m) WIDE MEDIANS	SOLID	YELLOW WHITE ONE WAY TRAFFIC	11 (280) C-C FOR THE DOUBLE LINE SEE TYPICAL PAINTED MEDIAN MARKING.
GORE MARKING AND CHANNELIZING LINES	8 (200) WITH 12 (300) DIAGONALS @ 45°	SOLID	WHITE	DIAGONALS: 15' (4.5 m) C-C (LESS THAN 30MPH (50 km/h)) 20' (6 m) C-C 30MPH (50 km/h) TO 45MPH (70 km/h) 30' (9 m) C-C (OVER 45MPH (70 km/h))
RAILROAD CROSSING	24 (600) TRANSVERSE LINES; "RR" 15' (4.5 m) LETTERS; 16 (400) LINE FOR 'X'	SOLID	WHITE	SEE STATE STANDARD 180001 AREA OF: "X"=36 SQ. FT. (3.3 m ²) EACH "X"=64.0 SQ. FT. (5.0 m ²)
SHOULDER DIAGONALS	12 (300) @ 45°	SOLID	WHITE - RIGHT YELLOW - LEFT	50' (15 m) C-C (LESS THAN 30MPH (50 km/h)) 75' (25 m) C-C 30 MPH (50 km/h) TO 45MPH (70 km/h) 150' (45 m) C-C (OVER 45MPH (70 km/h))

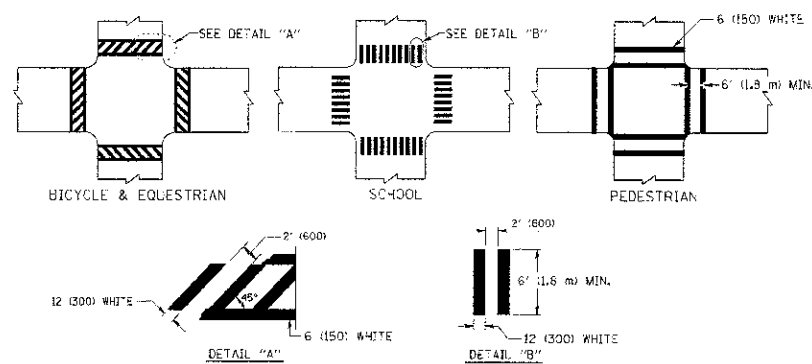
FOR FURTHER DETAILS ON PAVEMENT MARKING REFER TO STANDARD SPECIFICATIONS FOR ROAD AND BRIDGE CONSTRUCTION AND STATE STANDARD 780001.

All dimensions are in inches (millimeters) unless otherwise shown.



NOTE: MEDIANS WITH BARRIER CURB DO NOT REQUIRE AN EDGE LINE

TYPICAL LANE AND EDGE LINE MARKING



TYPICAL CROSSWALK MARKING

FILE NAME: d:\pav\work\pav\dot\driv\akosgn\081803151\03.dgn	USER NAME: drivakosgn	DESIGNED: EVERS	REVISED: T. RAMMACHER 10-27-94
	PLOT SCALE: 1/8" = 1'-0"	DRAWN:	REVISED: C. JUCIUS 09-09-09
	PLOT DATE: 7/2/2007	CHECKED:	REVISED:
		DATE: 03-15-90	REVISED:

STATE OF ILLINOIS
DEPARTMENT OF TRANSPORTATION

DISTRICT ONE
TYPICAL PAVEMENT MARKINGS

F.A. RTE.	SECTION	COUNTY	TOTAL SHEETS	SHEET NO.
2674	11-00045-00-PS	DUPAGE	20	20
TC-13		CONTRACT NO. 63784		
FED. ROAD DIST. NO. 1 ILLINOIS FED. AID PROJECT				

SCALE: NONE SHEET NO. 1 OF 1 SHEETS STA. TO STA.