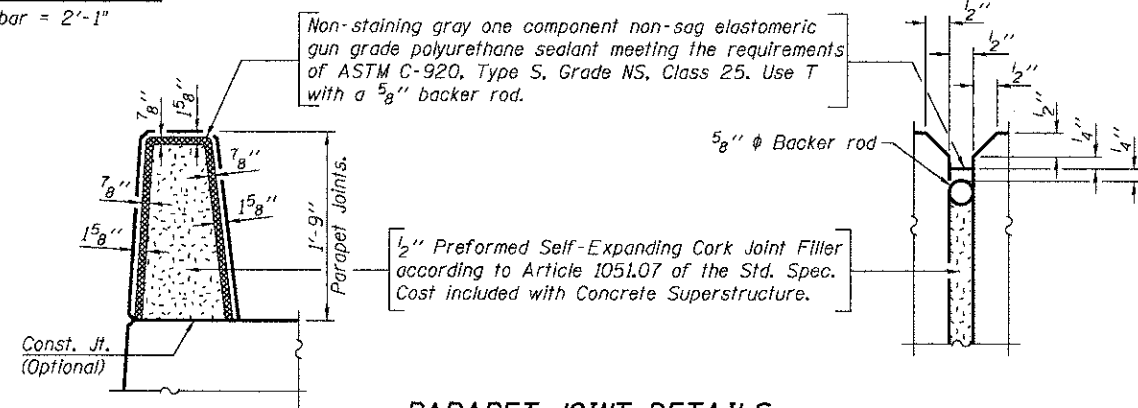
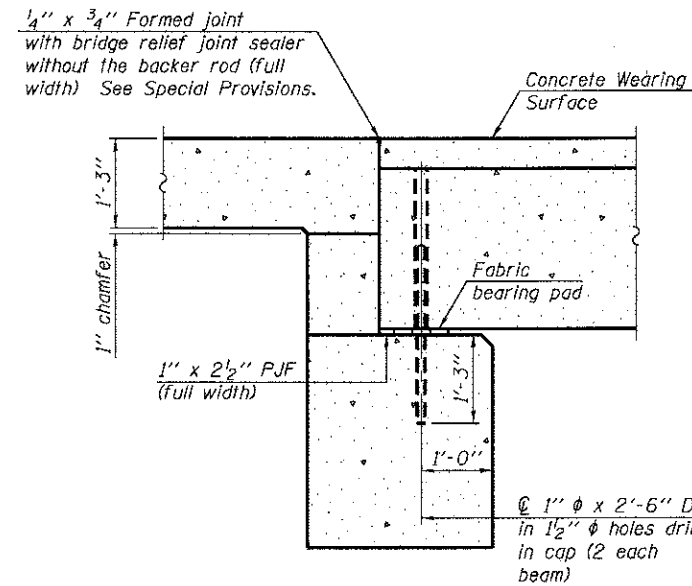


**MINIMUM BAR LAP**

#4 bar = 2'-1"



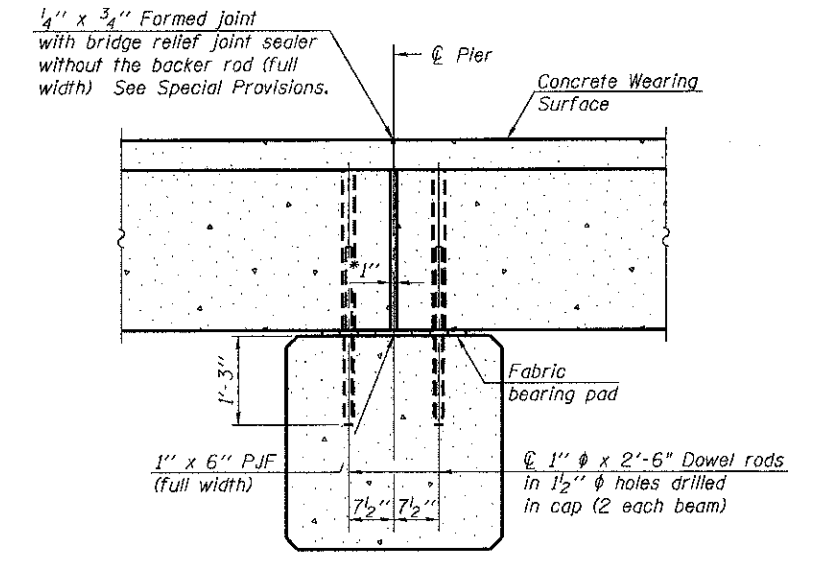
**PARAPET JOINT DETAILS**



**SECTION A-A**

(Dimensions are at Rt. L's)

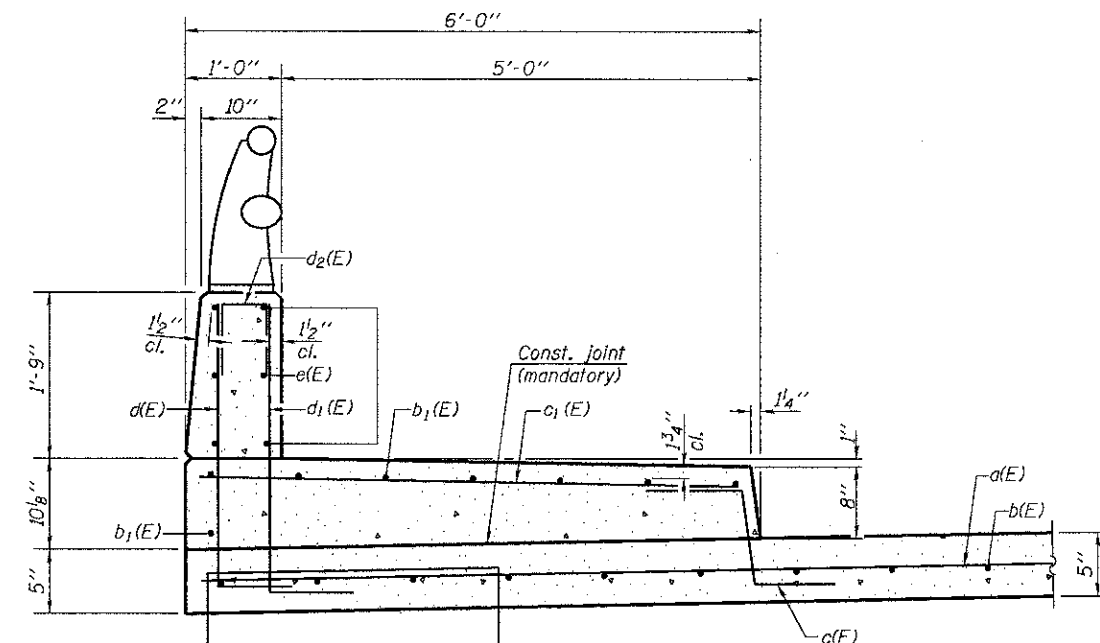
See Structural Sheet 6 of 18 for fabric bearing pad details.



**SECTION B-B**

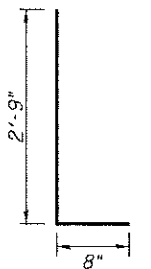
(Dimensions are at Rt. L's)

See Structural Sheet 6 of 18 for fabric bearing pad details.

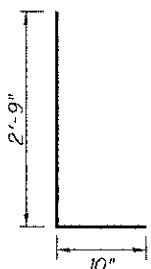


**SECTION THRU SIDEWALK**

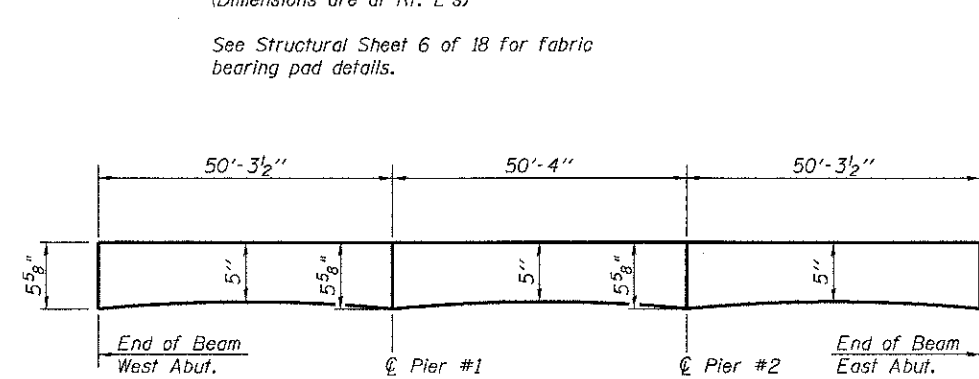
D(E) (See PPC Deck Beam Details on Sheet 5 of 18)



**BAR d(E)**

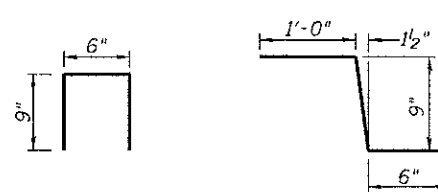


**BAR d<sub>1</sub>(E)**

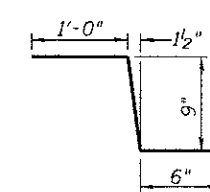


**ANTICIPATED CONCRETE WEARING SURFACE PROFILE**

(For information only)



**BAR d<sub>2</sub>(E)**



**BAR c(E)**

**SUPERSTRUCTURE BILL OF MATERIAL**

Bar	No.	Size	Length	Shape
d(E)	302	#4	24'-6"	—
b(E)	264	#4	26'-11"	—
b <sub>1</sub> (E)	96	#5	27'-4"	—
c(E)	302	#5	2'-3"	┌
c <sub>1</sub> (E)	302	#5	6'-1"	—
d <sub>1</sub> (E)	302	#4	3'-5"	┌
d <sub>1</sub> (E)	302	#6	3'-7"	┌
d <sub>2</sub> (E)	68	#4	2'-0"	┌
e(E)	108	#4	16'-6"	—
Bridge Deck Grooving		Sq. Yd.	503	
Protective Coat		Sq. Yd.	814	
Concrete Superstructure		Cu. Yd.	68.6	
Reinforcement Bars, Epoxy Coated		Pound	18650	
Concrete Wearing Surface, 5"		Sq. Yd.	738	



USER NAME	DESIGNED - RJP	REVISED
PLOT SCALE	CHECKED - MJT	REVISED
PLOT DATE	DRAWN - JTF	REVISED
	CHECKED - MJT	REVISED

STATE OF ILLINOIS  
DEPARTMENT OF TRANSPORTATION

SUPERSTRUCTURE DETAILS  
STRUCTURE NO. 022-3041

SHEET NO. 4 OF 18 SHEETS

F.A.P. RTE.	SECTION	COUNTY	TOTAL SHEETS	SHEET NO.
	08-01120-00-BR		38	20
DUPAGE			CONTRACT NO. 63785	
ILLINOIS FED. AID PROJECT				