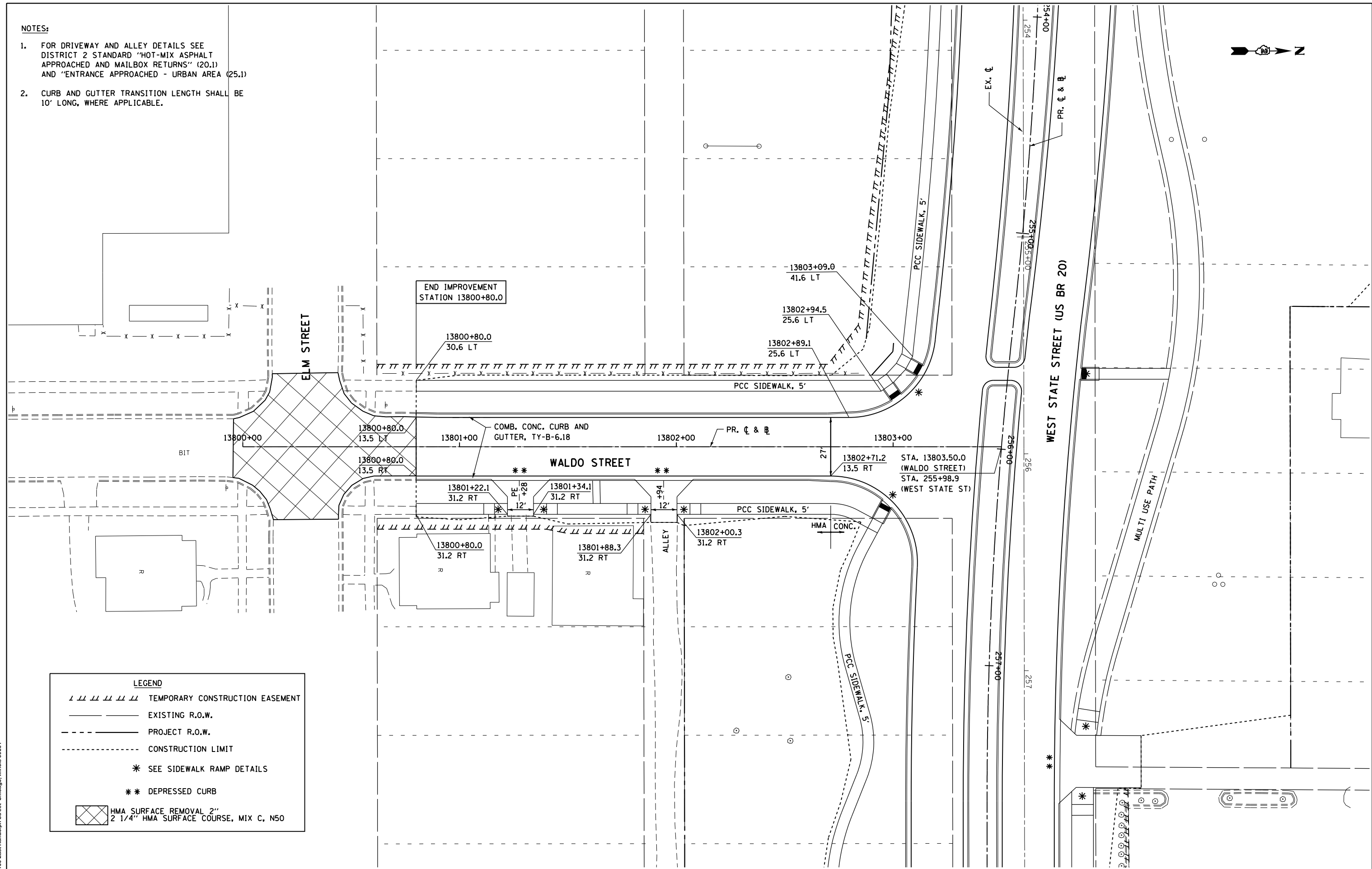


- NOTES:**
- FOR DRIVEWAY AND ALLEY DETAILS SEE DISTRICT 2 STANDARD "HOT-MIX ASPHALT APPROACHED AND MAILBOX RETURNS" (20.1) AND "ENTRANCE APPROACHED - URBAN AREA (25.1)
 - CURB AND GUTTER TRANSITION LENGTH SHALL BE 10' LONG, WHERE APPLICABLE.



LEGEND

	TEMPORARY CONSTRUCTION EASEMENT
	EXISTING R.O.W.
	PROJECT R.O.W.
	CONSTRUCTION LIMIT
	SEE SIDEWALK RAMP DETAILS
	DEPRESSED CURB
	HMA SURFACE REMOVAL 2" / 2 1/4" HMA SURFACE COURSE, MIX C, N50

McDonough Associates Inc.
 Engineers / Architects
 130 East Randolph Street, Chicago, Illinois 60601

FILE NAME =	USER NAME = dssdd	DESIGNED - JWM	REVISED -
ei:\pw\work\p\dot\d\ssdd\0317614\026477\0-shr-pln077.dgn		DRAWN - JPF	REVISED -
PLOT SCALE = 40.0000' / in.		CHECKED - RCH	REVISED -
PLOT DATE = Mon Dec 17 13:44:40 2012		DATE - *SUBDATE*	REVISED -

**STATE OF ILLINOIS
 DEPARTMENT OF TRANSPORTATION**

**PROPOSED PLAN
 WALDO STREET**

SCALE: SHEET NO. 12 OF 23 SHEETS STA. TO STA.

F.A.P. RTE.	SECTION	COUNTY	TOTAL SHEETS	SHEET NO.
303	41R	WINNEBAGO	327	77
CONTRACT NO. 64750				
FED. ROAD DIST. NO. 2 ILLINOIS FED. AID PROJECT				