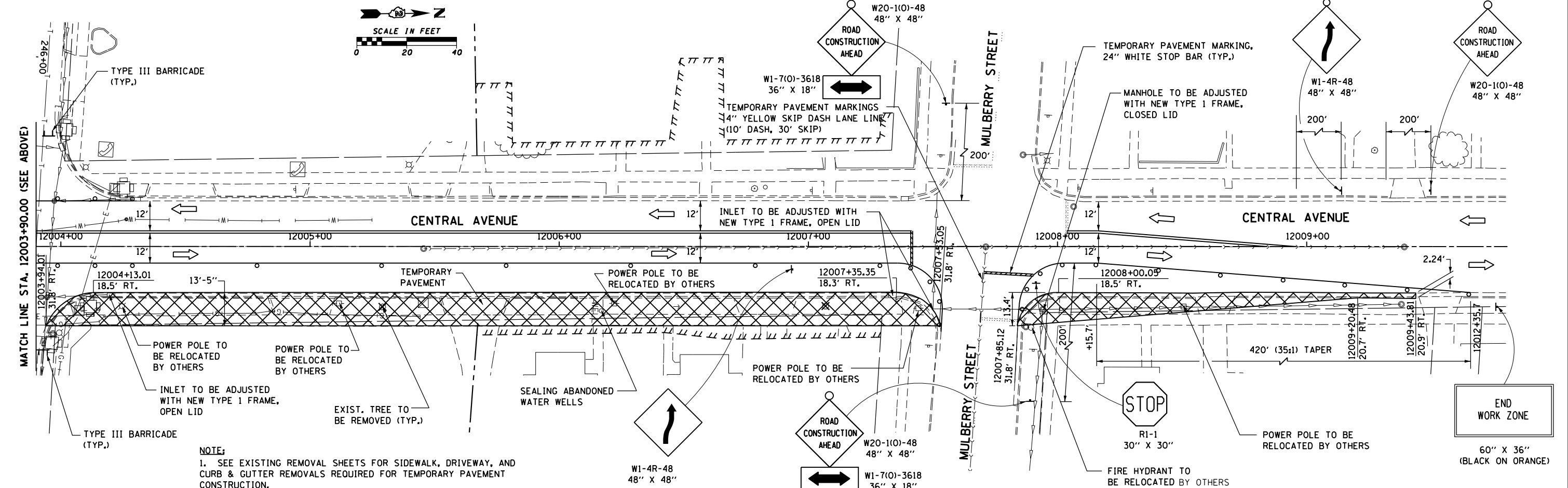
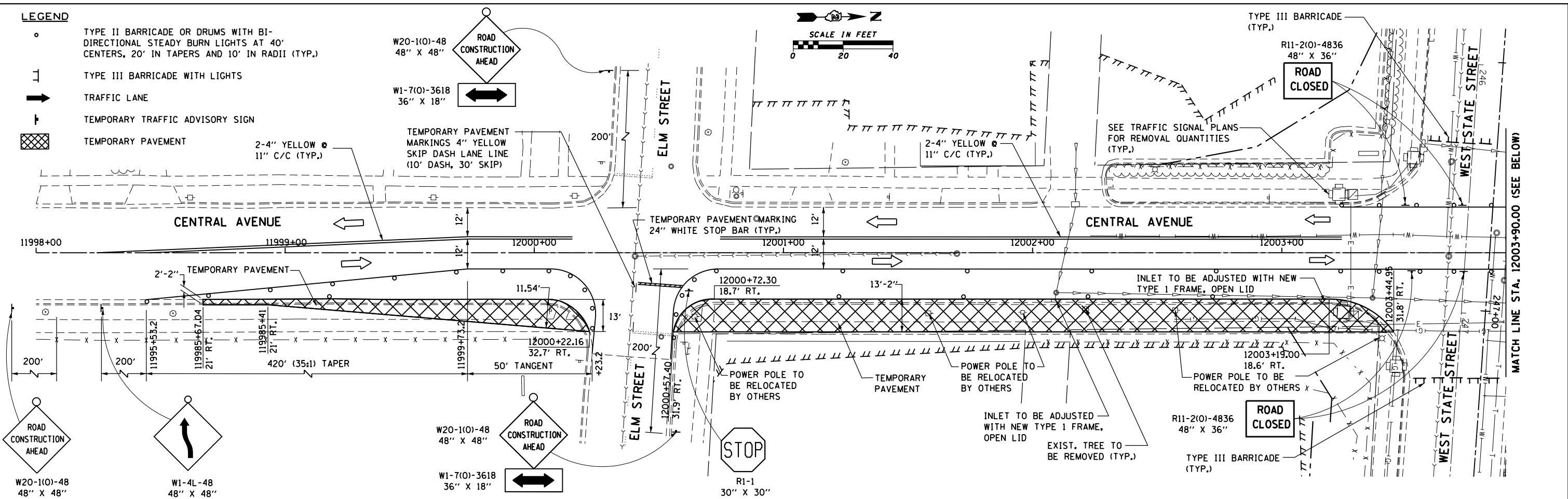
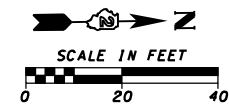


LEGEND

- TYPE II BARRICADE OR DRUMS WITH BI-DIRECTIONAL STEADY BURN LIGHTS AT 40' CENTERS, 20' IN TAPERS AND 10' IN RADII (TYP.)
- ⊥ TYPE III BARRICADE WITH LIGHTS
- TRAFFIC LANE
- ⊥ TEMPORARY TRAFFIC ADVISORY SIGN
- ▨ TEMPORARY PAVEMENT



NOTE:
1. SEE EXISTING REMOVAL SHEETS FOR SIDEWALK, DRIVEWAY, AND CURB & GUTTER REMOVALS REQUIRED FOR TEMPORARY PAVEMENT CONSTRUCTION.

McDonough Associates Inc.
Engineers / Architects
130 East Randolph Street, Chicago, Illinois 60601

| | | | |
|--|--------------------------------------|--------------------|-----------|
| FILE NAME = | USER NAME = dossed | DESIGNED - BA | REVISED - |
| es:\pwork\p\dotted\dossed\0317617\026478 | 0-shr-stg-112-120.dgn | DRAWN - BA | REVISED - |
| | PLOT SCALE = 48.0000' / in. | CHECKED - DMB | REVISED - |
| | PLOT DATE = Mon Dec 17 14:53:38 2012 | DATE - \$SUBDATE\$ | REVISED - |

**STATE OF ILLINOIS
DEPARTMENT OF TRANSPORTATION**

**MAINTENANCE OF TRAFFIC - PRE-STAGE
CENTRAL AVENUE**

SCALE: SHEET NO. 4 OF 9 SHEETS STA. TO STA.

| | | | | |
|---|---------|-----------|--------------------|-----------|
| F.A.P. RTE. | SECTION | COUNTY | TOTAL SHEETS | SHEET NO. |
| 303 | 41R | WINNEBAGO | 327 | 115 |
| FED. ROAD DIST. NO. 2 ILLINOIS FED. AID PROJECT | | | CONTRACT NO. 64750 | |