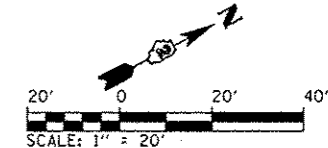
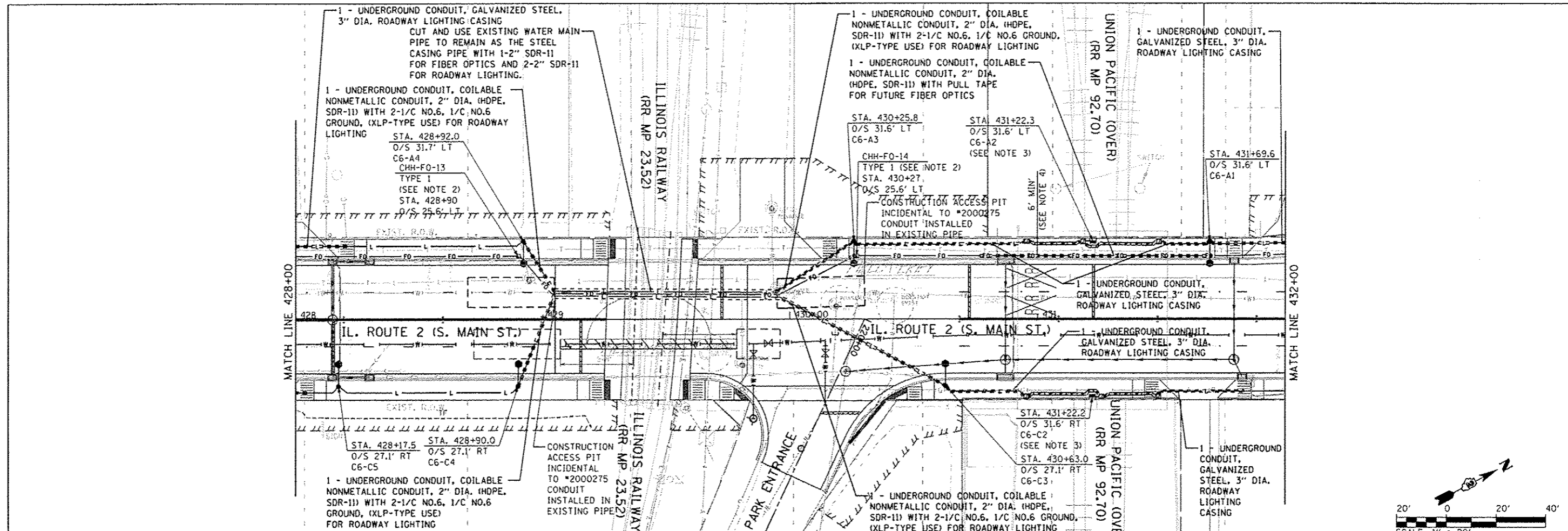


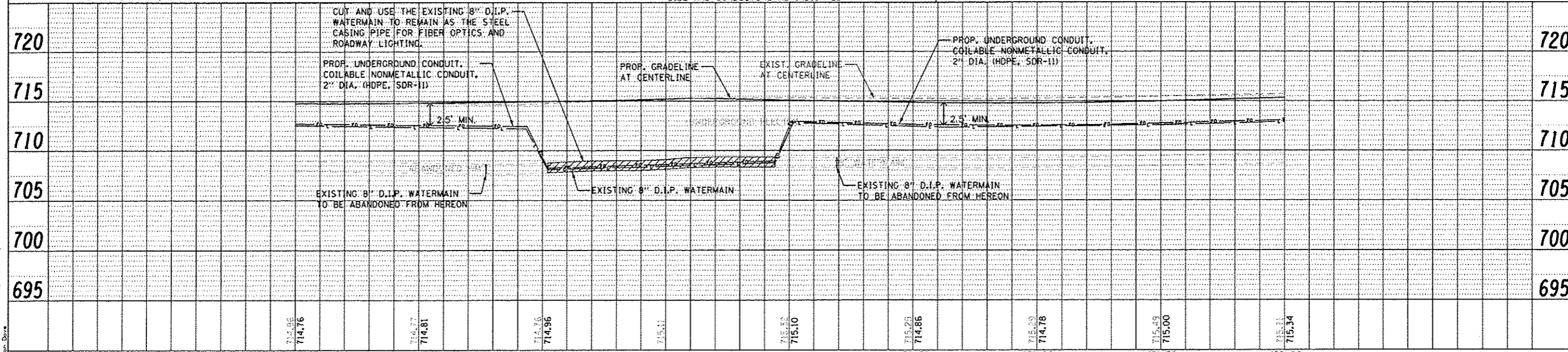
DATE	
BY	
REVISION	
NO.	
DESCRIPTION	
DATE	
BY	
REVISION	
NO.	
DESCRIPTION	
DATE	
BY	
REVISION	
NO.	
DESCRIPTION	

DATE	
BY	
REVISION	
NO.	
DESCRIPTION	
DATE	
BY	
REVISION	
NO.	
DESCRIPTION	



LEGEND

- EXISTING ROADWAY LIGHTPOLE AND LUMINAIRE TO BE REMOVED, SALVAGE
- PROPOSED DECORATIVE LIGHT POLE AND LUMINAIRE ALUMINUM, 40 FT. M.H., PULSE START METAL HALIDE, HORIZONTAL MOUNT 400 WATT (SEE NOTE 13 ON SHEET 487)
- PROPOSED UNDERPASS LUMINAIRE, METAL HALIDE, VERTICAL MOUNT, 100 WATT
- PROPOSED UTILITY POLE (BY OTHERS)
- PROPOSED LIGHTING CONTROLLER, 100 AMP, 480V
- HH = PROP. HANDHOLE PER LATEST DOT STD 81400
- CHH = PROPOSED HANDHOLE, COMPOSITE CONCRETE TYPE AS INDICATED
- PROPOSED JUNCTION BOX
- PROPOSED CONDUIT ATTACHED TO STRUCTURE, SIZE AND CONDUCTORS AS INDICATED
- PROPOSED UNIT DUCT, 600V, 2-1/C NO.6, 1/C NO.6 GROUND, (XLP-TYPE USE), 1/4" DIA. POLYETHYLENE
- FO - PROPOSED UNDERGROUND CONDUIT, COILABLE NONMETALLIC CONDUIT, 2" DIA. WITH PULL STRING AND TRACER CABLE
- PROPOSED UNDERGROUND CONDUIT, GALVANIZED STEEL, SIZE AND CONDUCTORS AS INDICATED



CMT CRAWFORD, MURPHY & TILLY, INC. CONSULTING ENGINEERS 1801 N. W. 10th St. Ft. Lauderdale, FL 33304	MODEL NAME = Detail	DESIGNED - JWD	REVISED - Δ 2/22/2013	STATE OF ILLINOIS DEPARTMENT OF TRANSPORTATION	ROADWAY LIGHTING PLAN AND PROFILE IL RTE 2 (SOUTH MAIN STREET)		F.A.P. RTE. 742	SECTION 132, 331 R-1	COUNTY WINNEBAGO	TOTAL SHEETS 705	SHEET NO. 502
	FILE NAME = 0264821-402-04110.dgn	DRAWN - JWD	REVISED -		SCALE: 1" = 20'	SHEET 16 OF 32 SHEETS	STA. 428+00 TO STA. 432+00	ILLINOIS FED. AID PROJECT		CONTRACT NO. 64821	
	PLOT SCALE = 48.0000 / in.	CHECKED - AB	REVISED -								
	PLOT DATE = 2/22/2013 - 3:45:41 PM	DATE - 11/02/2012	REVISED -								