

PROJECT ENGINEER - REBECCA MARRUFFO

SQUAD LEADER - BRAD CUSHMAN (815)284-5996

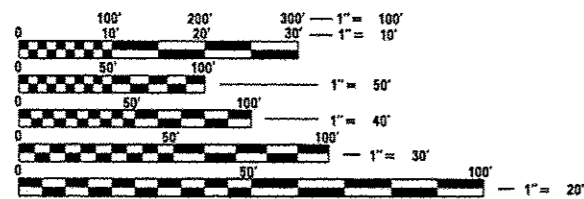
F.A.S. RTE.	SECTION	COUNTY	TOTAL SHEETS	SHEET NO.
226	3T & 3BR-1	HENRY	210	1
FED. ROAD DIST. NO.		ILLINOIS	CONTRACT NO. 64F25	

### INDEX

- 1 COVER SHEET
- 2 - 7 SUMMARY OF QUANTITIES
- 8 - 9 GENERAL NOTES
- 10 - 12 TYPICAL SECTIONS
- 13 - 19 SCHEDULE OF QUANTITIES
- 20 HMA SCHEDULE
- EARTHWORK / AGGREGATE SCHEDULE
- 21 - 26 HORIZONTAL & VERTICAL CONTROL
- 27 - 41 PLAN & PROFILE
- 42 - 56 BRIDGE PLANS
- 57 - 62 EXISTING STRUCTURE PLANS
- 63 - 73 CULVERT DETAIL SHEETS
- 74 - 86 EROSION CONTROL DETAILS
- 87 - 95 BORING LOGS
- 96 GUARDRAIL DETAIL
- 97 DETOUR ROUTE DETAIL
- 98 AGGREGATE DITCH FOR FLEXIBLE DITCH LINING DETAIL
- BACKSLOPE STABILITY DRAIN DETAIL
- 99 HOT-MIX ASPHALT SHOULDER (23.4a)
- CONCRETE HEADWALLS FOR PIPE DRAINS (27.4)
- CAST-IN-PLACE REINFORCED CONCRETE END SECTIONS (28.4)
- DELINEATOR AND POST ORIENTATION (37.4)
- 100 TYPICAL BENCHING ON EXISTING EMBANKMENT (50.4)
- LAND SECTION & REFERENCE MARKERS (63.4)
- FIELD TILE JUNCTION VAULTS 24" AND 36" DIA. (30.2)
- 101 UNDERDRAIN FOR ACROSS ROAD (AR) CULVERTS (37.2)
- WITNESS MARKER & PERMANENT SURVEY MARKERS, TYPE II (66.2)
- NAME PLATES FOR CULVERTS (88.2)
- 102 TYPICAL FURROWED ROADWAY SLOPES (1.1)
- 104 HOT-MIX ASPHALT APPROACHES & MAILBOX RETURNS (20.1)
- 105 TRAFFIC CONTROL FOR ROAD CLOSURE (40.1)
- 106 - 108 TYPICAL PAVEMENT MARKINGS (41.1)
- 109 DETAIL OF PLANTING AND BRACING TREES (92.1)
- 110 - 210 CROSS SECTIONS

### STATE STANDARDS

- 000001-06 STANDARD SYMBOLS, ABBREVIATIONS AND PATTERNS
- 001001-02 AREAS OF REINFORCEMENT BARS
- 001006-00 DECIMAL OF AN INCH AND A FOOT
- 280001-07 TEMPORARY EROSION CONTROL SYSTEMS
- 420001-07 PAVEMENT JOINTS
- 420401-09 BRIDGE APPROACH PAVEMENT CONNECTOR
- 442201-03 CLASS C AND D PATCHES
- 515001-03 NAME PLATE FOR BRIDGES
- 542001-03 CONCRETE END SECTIONS FOR PIPE CULVERTS 15" THRU 84" DIA.
- 542311-04 TRAVERSABLE PIPE GRATE
- 542401-01 METAL END SECTION FOR PIPE CULVERTS
- 601101-01 CONCRETE HEADWALL FOR PIPE DRAIN
- 630001-10 STEEL PLATE BEAM GUARDRAIL
- 630201-06 PCC / HMA STABILIZATION AT STEEL PLATE BEAM GUARDRAIL
- 630301-06 SHOULDER WIDENING FOR TYPE 1 (SPECIAL) GUARDRAIL TERMINALS
- 631031-11 TRAFFIC BARRIER TERMINAL, TYPE B
- 635001-01 DELINEATORS
- 635006-03 REFLECTOR AND TERMINAL MARKER PLACEMENT
- 635011-02 REFLECTOR MARKER AND MOUNTING DETAILS
- 666001-01 RIGHT-OF-WAY MARKERS
- 701001-02 OFF-ROAD OPERATIONS, 2L, 2W, MORE THAN 15' AWAY
- 701006-04 OFF-ROAD OPERATIONS, 2L, 2W, 15' TO 24" FROM EDGE OF PAVEMENT
- 701301-04 LANE CLOSURE, 2L, 2W, SHORT TIME OPERATIONS
- 701311-03 LANE CLOSURE, 2L, 2W, MOVING OPERATIONS-DAY ONLY
- 701901-03 TRAFFIC CONTROL DEVICES
- 720011-01 METAL POST FOR SIGNS, MARKERS AND DELINEATORS
- 728001-01 TELESCOPING STEEL SIGN SUPPORT
- 729001-01 APPLICATIONS OF TYPES A & B METAL POSTS (FOR SIGNS AND MARKERS)
- 780001-03 TYPICAL PAVEMENT MARKINGS
- 781001-03 TYPICAL APPLICATIONS RAISED REFLECTIVE PAVEMENT MARKERS



FULL SIZE PLANS HAVE BEEN PREPARED USING STANDARD ENGINEERING SCALES. REDUCED SIZED PLANS WILL NOT CONFORM TO STANDARD SCALES. IN MAKING MEASUREMENTS ON REDUCED PLANS, THE ABOVE SCALES MAY BE USED.

J.U.L.I.E.  
JOINT UTILITY LOCATION INFORMATION FOR EXCAVATION  
1-800-892-0123  
OR 811

CONTRACT NO. 64F25

HENRY COUNTY SECTION 3T & 3BR-1 FAS ROUTE 226 (US 6)

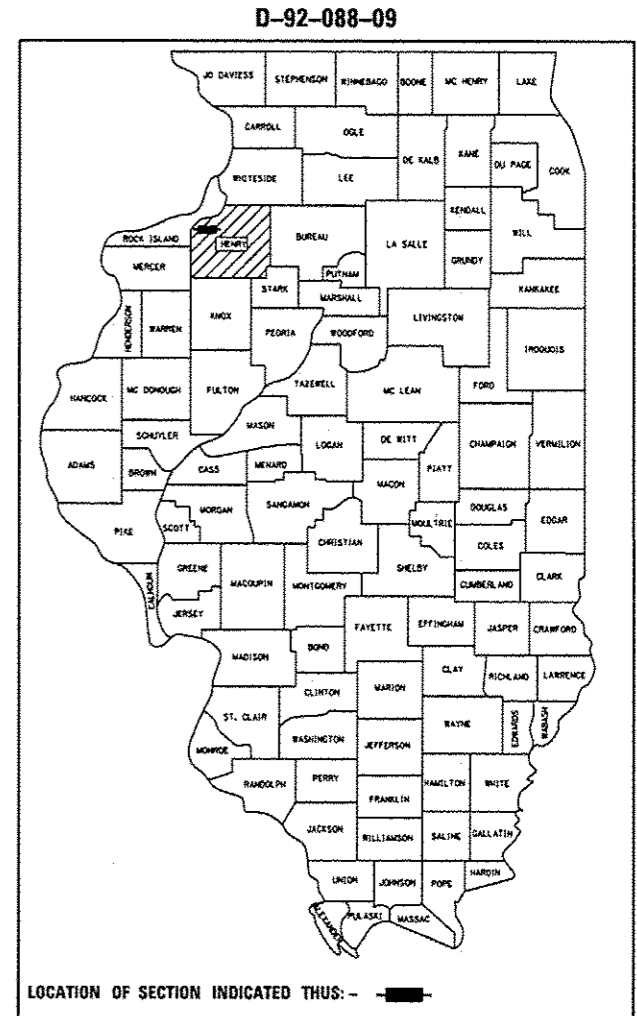
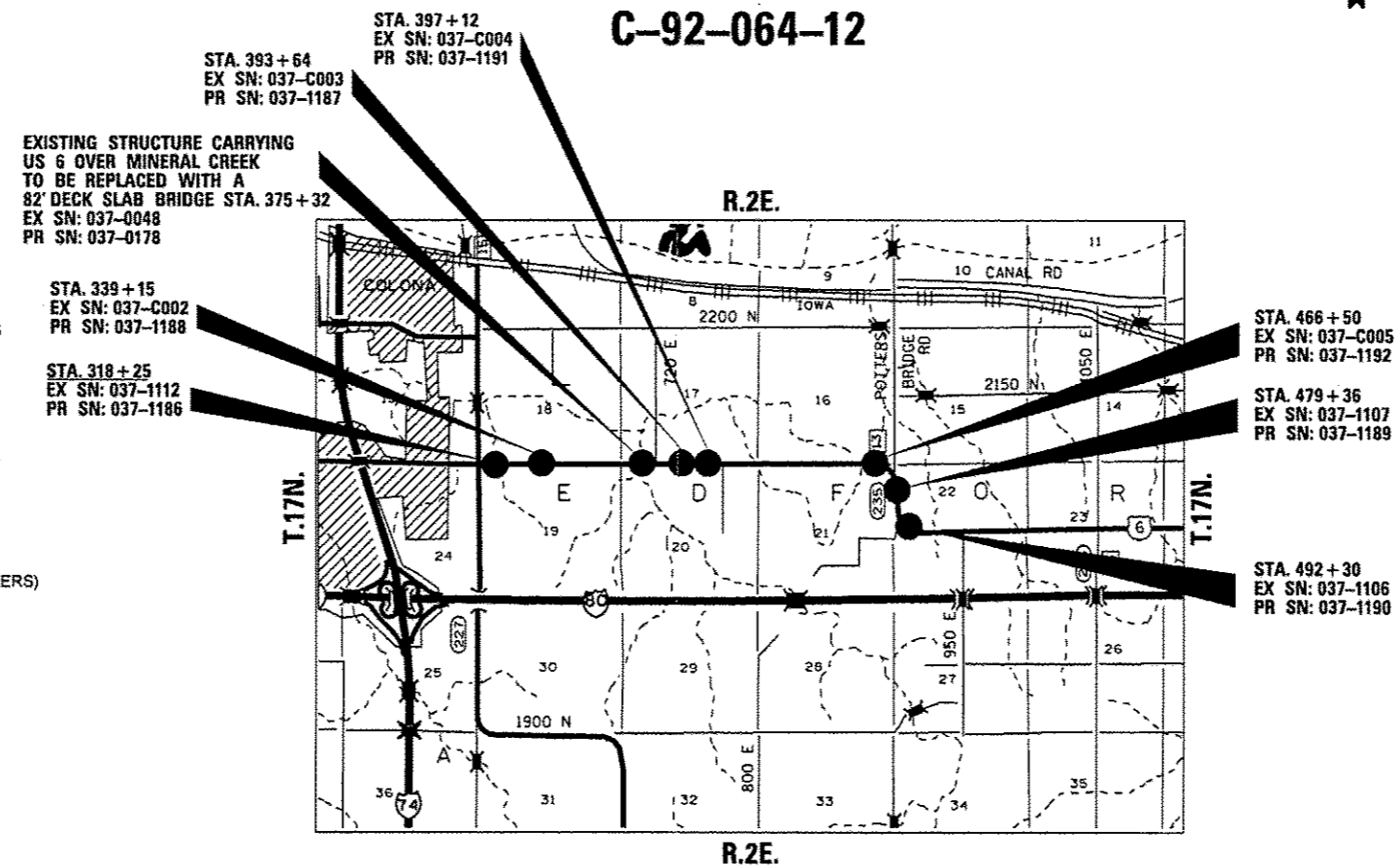
STATE OF ILLINOIS  
DEPARTMENT OF TRANSPORTATION  
DIVISION OF HIGHWAYS

# PROPOSED HIGHWAY PLANS

FAS ROUTE 226 (US 6)  
SECTION 3T & 3BR-1  
PROJECT : ACHSIP-ACRS-0226(102)

HENRY COUNTY

C-92-064-12



STATE OF ILLINOIS  
DEPARTMENT OF TRANSPORTATION  
DIVISION OF HIGHWAYS

SUBMITTED Oct 19 2012

Paul A. Aulis  
DEPUTY DIRECTOR OF HIGHWAYS, REGION ENGINEER

John D. Baranzoli PE  
ENGINEER OF DESIGN AND ENVIRONMENT

Chris O'Sullivan PE  
DIRECTOR OF HIGHWAYS, CHIEF ENGINEER

PRINTED BY THE AUTHORITY  
OF THE STATE OF ILLINOIS

EDFORD TOWNSHIP SECTION 16,17,18,19,20,21,22

GROSS LENGTH = 5,550 FT. = 1.05 MILE  
NET LENGTH = 5,550 FT. = 1.05 MILE