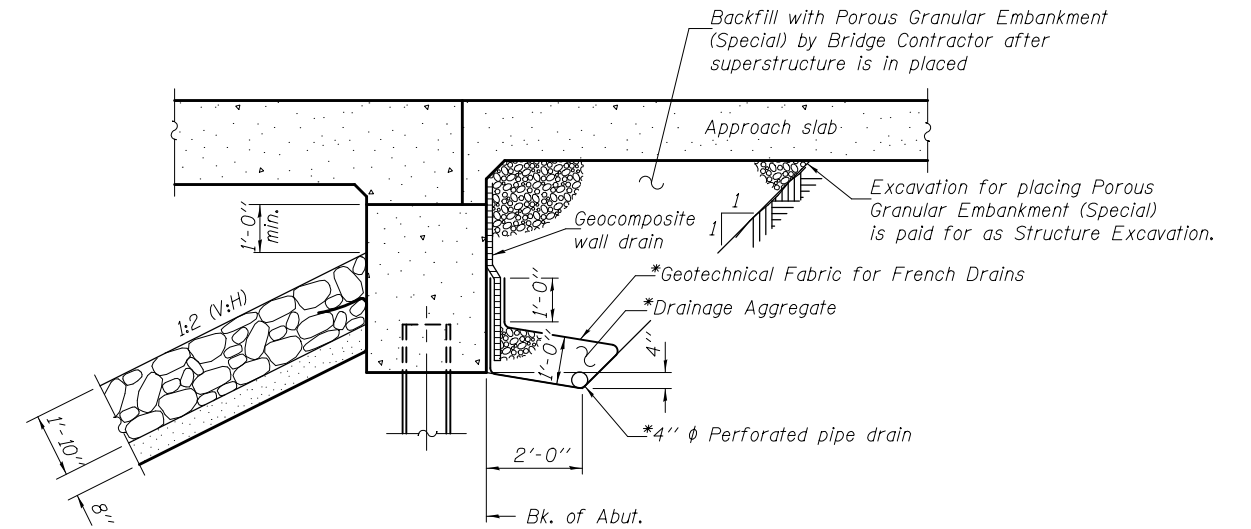


GENERAL NOTES

Reinforcement bars designated (E) shall be epoxy coated.
 Layout of slope protection system may be varied to suit ground conditions in the field as directed by the Engineer.
 The Contractor shall make allowance for the deflection of forms, shrinkage and settlement of falsework. Dead load deflections are negligible. Forms for deck slab shall be removed prior to placement of bridge approach slab.
 Slipforming of the parapet is not allowed.



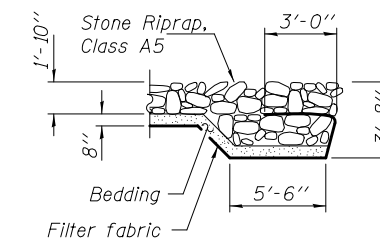
SECTION THRU INTEGRAL ABUTMENT

*Included in the cost of Pipe Underdrains for Structures, 4".

Note: All drainage system components shall extend to 2'-0" from the end of each wingwall except an outlet pipe shall extend until intersecting with the side slopes. The pipes shall drain into concrete headwalls. (See Article 601.05 of the Standard Specifications and Highway Standard 601101).

TOTAL BILL OF MATERIAL

ITEM	UNIT	SUPER	SUB	TOTAL
Porous Granular Embankment (Special)	Cu. Yd.		71.1	71.1
Stone Riprap, Class A5	Sq. Yd.		594	594
Filter Fabric	Sq. Yd.		594	594
Removal of Existing Structures No. 4	Each	1		1
Structure Excavation	Cu. Yd.		56.2	56.2
Concrete Structures	Cu. Yd.		169.7	169.7
Concrete Superstructure	Cu. Yd.	325.6		325.6
Bridge Deck Grooving	Sq. Yd.	596.0		596.0
Concrete Encasement	Cu. Yd.		4.2	4.2
Protective Coat	Sq. Yd.	725.0		725.0
Reinforcement Bars, Epoxy Coated	Pound	82520	14770	97290
Furnishing Steel Piles HP12x53	Foot		295	295
Furnishing Steel Piles HP12x63	Foot		609	609
Driving Piles	Foot		295	295
Test Pile Steel HP12x53	Each		2	2
Setting Piles in Rock	Each		14	14
Name Plates	Each	1		1
Geocomposite Wall Drain	Sq. Yd.		42.8	42.8
Pipe Underdrains for Structures, 4"	Foot		139	139
Cofferdam Excavation	Cu. Yd.		54.0	54.0
Cofferdam (Type 1), Location 1	Each		1	1
Cofferdam (Type 1), Location 2	Each		1	1



SECTION A-A

DESIGNED - FESSEHA TEKLEHAIMANOT	EXAMINED - <i>Joanne F. [Signature]</i>	DATE - December 4, 2012
CHECKED - STEPHEN M. RYAN	PASSED - <i>Carl [Signature]</i>	REVISED
DRAWN - h.t. duong	ACTING ENGINEER OF BRIDGES AND STRUCTURES	REVISED
CHECKED - GRA/FT		

**STATE OF ILLINOIS
 DEPARTMENT OF TRANSPORTATION**

**GENERAL DATA
 STRUCTURE NO. 037-0178**

SHEET NO. 2 OF 15 SHEETS

F.A.S. RTE.	SECTION	COUNTY	TOTAL SHEETS	SHEET NO.
226	3T & 3BR-1	HENRY	210	43
			CONTRACT NO. 64F25	
ILLINOIS FED. AID PROJECT				