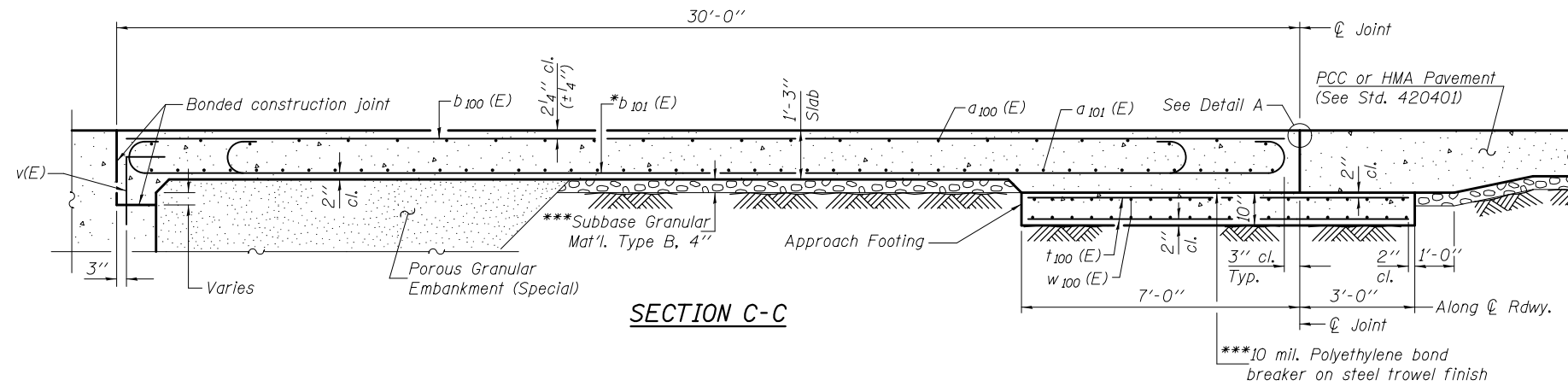
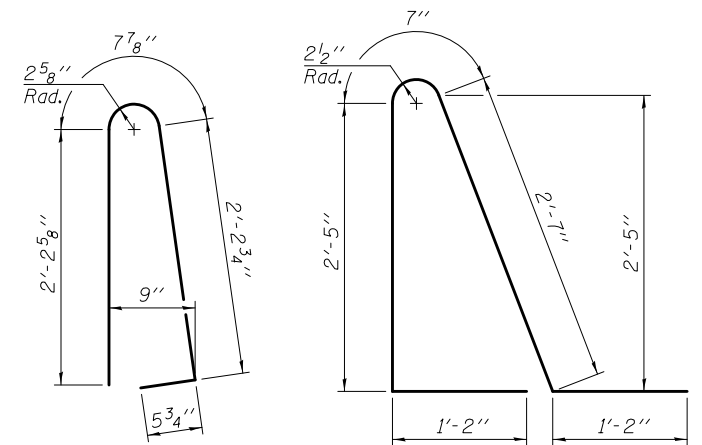
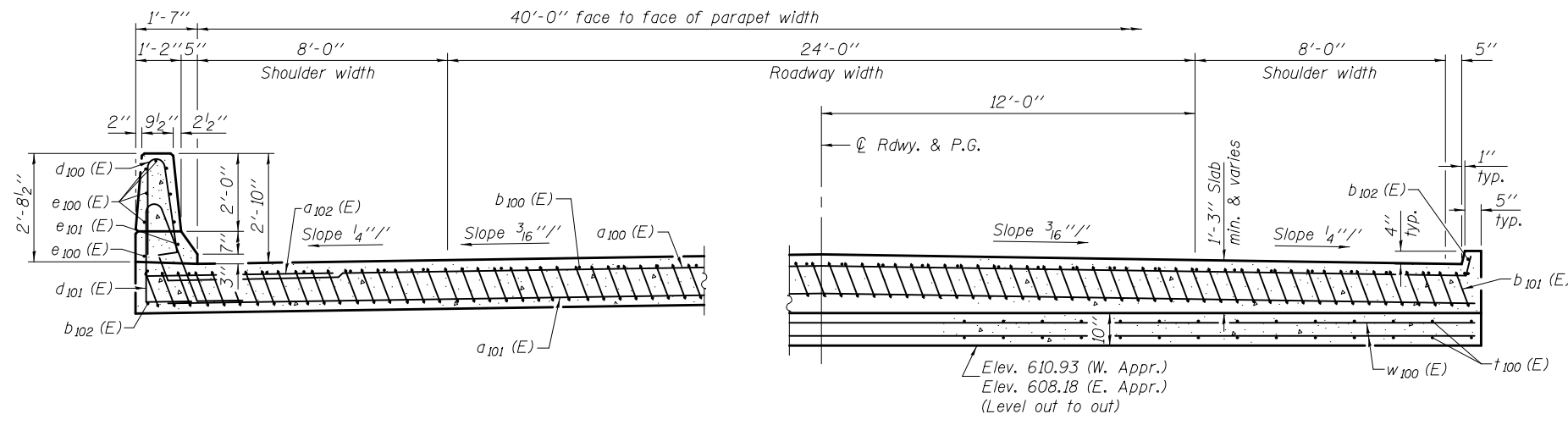


Notes:  
 See sheet 9 of 15 for Detail A and View B-B.  
 Approach slab and parapet concrete shall be paid for as Concrete Superstructure.  
 Approach footing concrete shall be paid for as Concrete Structures.  
 Reinforcement shall be paid for as Reinforcement Bars, Epoxy Coated.  
 For v(E) bars details, see sheets 11, 12, & 13 of 15.  
 The approach footing maximum applied service bearing pressure (Qmax) = 2.0 ksf.  
 Cost of excavation for approach footing included with Concrete Structures.  
 For Porous Granular Embankment (Special) and drainage treatment details, see sheet 2 of 15.  
 For additional parapet details, see sheet 8 of 15.



\*Tilt #9 b<sub>101</sub> (E) bars as required to maintain clearance.  
 \*\*\*Cost included with Concrete Superstructure.



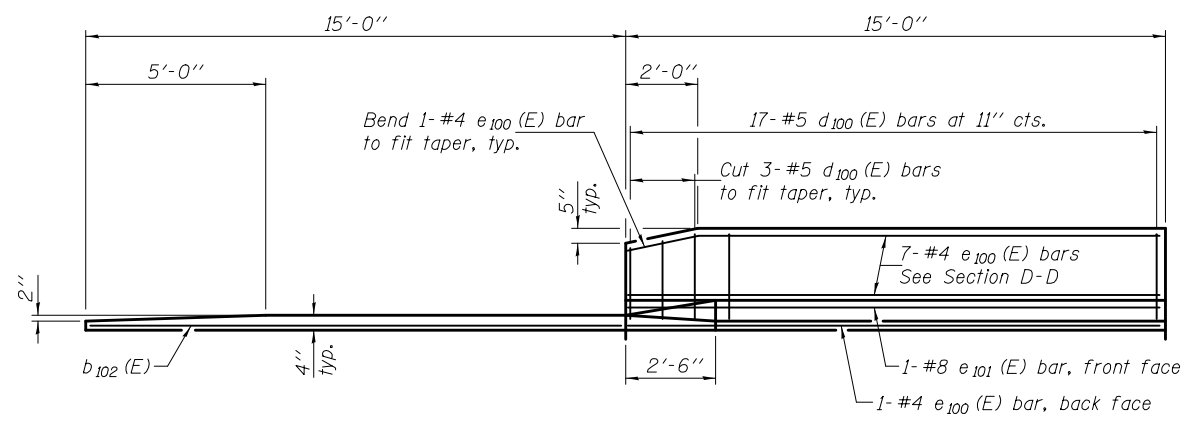
NEAR ABUTMENT

SECTION D-D  
 (See Plan for dimensions not shown)

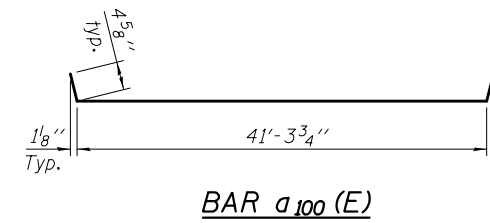
AT APPROACH FOOTING

TWO APPROACHES  
 BILL OF MATERIAL

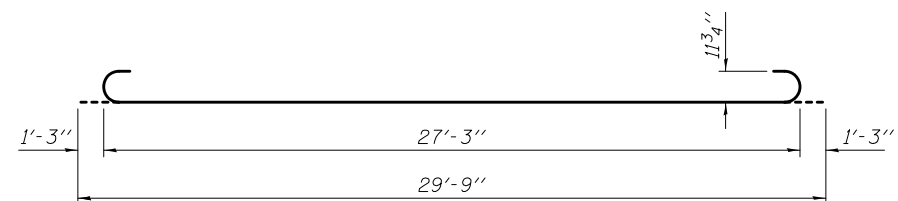
Bar	No.	Size	Length	Shape
a <sub>100</sub> (E)	50	#4	42'-1"	[Diagram]
a <sub>101</sub> (E)	92	#5	41'-6"	[Diagram]
a <sub>102</sub> (E)	48	#6	6'-6"	[Diagram]
b <sub>100</sub> (E)	68	#4	29'-8"	[Diagram]
b <sub>101</sub> (E)	202	#9	29'-9"	[Diagram]
b <sub>102</sub> (E)	8	#4	14'-8"	[Diagram]
d <sub>100</sub> (E)	68	#5	5'-7"	[Diagram]
d <sub>101</sub> (E)	68	#5	7'-11"	[Diagram]
e <sub>100</sub> (E)	32	#4	14'-8"	[Diagram]
e <sub>101</sub> (E)	4	#8	14'-8"	[Diagram]
t <sub>100</sub> (E)	84	#4	9'-8"	[Diagram]
w <sub>100</sub> (E)	80	#5	41'-6"	[Diagram]
Concrete Superstructure		Cu. Yd.	125.7	
Concrete Structures		Cu. Yd.	25.8	
Reinforcement Bars, Epoxy Coated		Pound	33150	



VIEW E-E



BAR a<sub>100</sub> (E)



BAR b<sub>101</sub> (E)

DESIGNED - FESSEHA TEKLEHAIMANOT  
 CHECKED - STEPHEN M. RYAN  
 DRAWN - h.t. duong  
 CHECKED - GRA/FT

EXAMINED - *Joanne F. Kelly*  
 ACTING ENGINEER OF BRIDGE DESIGN

PASSED - *Carl Perry*  
 ACTING ENGINEER OF BRIDGES AND STRUCTURES

DATE - December 4, 2012

REVISED

STATE OF ILLINOIS  
 DEPARTMENT OF TRANSPORTATION

BRIDGE APPROACH SLAB DETAILS  
 STRUCTURE NO. 037-0178

SHEET NO. 10 OF 15 SHEETS

F.A.S. RTE.	SECTION	COUNTY	TOTAL SHEETS	SHEET NO.
226	3T & 3BR-1	HENRY	210	51
CONTRACT NO. 64F25				
ILLINOIS FED. AID PROJECT				