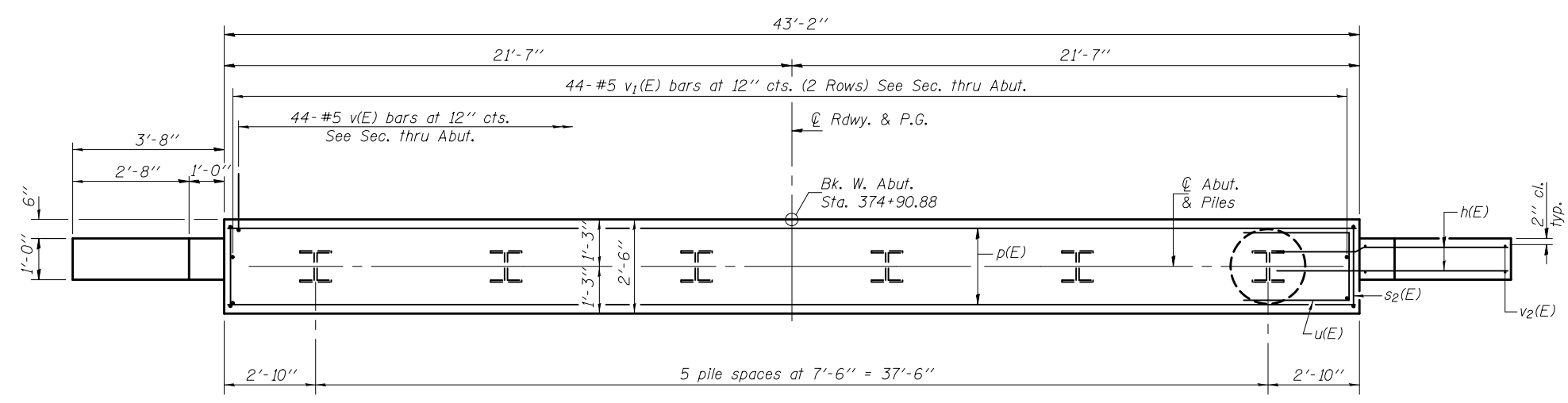


**ELEVATION**  
(Looking West)

**SEC. THRU ABUT.**



**PLAN**

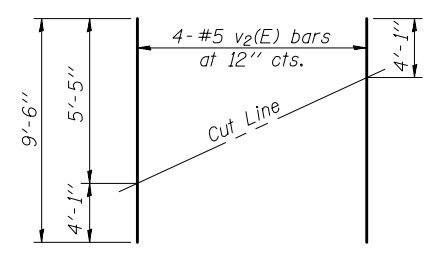
**BILL OF MATERIAL**

| Bar                              | No. | Size    | Length  | Shape |
|----------------------------------|-----|---------|---------|-------|
| h(E)                             | 32  | #5      | 6'-0"   | —     |
| p(E)                             | 11  | #8      | 42'-10" | —     |
| s2(E)                            | 41  | #4      | 12'-1"  | □     |
| u(E)                             | 8   | #6      | 8'-1"   | □     |
| v(E)                             | 44  | #5      | 4'-8"   | ┌     |
| v1(E)                            | 88  | #5      | 3'-0"   | —     |
| v2(E)                            | 8   | #5      | 9'-6"   | —     |
| Structure Excavation             |     | Cu. Yd. | 28.1    |       |
| Concrete Structures              |     | Cu. Yd. | 16.8    |       |
| Reinforcement Bars, Epoxy Coated |     | Pound   | 2460    |       |
| Furnishing Steel Piles HP12x53   |     | Foot    | 135     |       |
| Driving Piles                    |     | Foot    | 135     |       |
| Test Pile Steel HP12x53          |     | Each    | 1       |       |
| Concrete Encasement              |     | Cu. Yd. | 2.1     |       |

For details of piles and concrete encasement, see sheet 14 of 15.

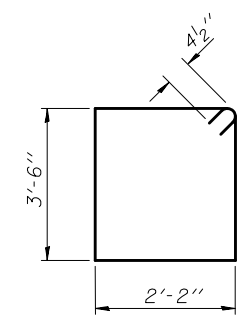
**PILE DATA**

Type: Steel HP12x53  
 Nominal Required Bearing: 419 Kips  
 Factored Resistance Available: 230 Kips  
 Est. Length: 27'  
 No. Production Piles: 5  
 No. Test Piles: 1

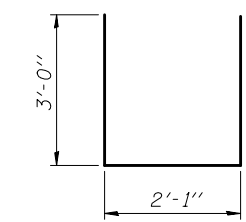


**FIELD CUTTING DIAGRAM**

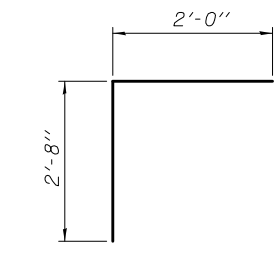
Order v2(E) full length. Cut as shown and use remainder of bars in opposite face.



**BAR s2(E)**



**BAR u(E)**



**BAR v(E)**

|                                  |   |                         |
|----------------------------------|---|-------------------------|
| DESIGNED - FESSEHA TEKLEHAIMANOT | EXAMINED - <i>Joanne F. [Signature]</i>   | DATE - December 4, 2012 |
| CHECKED - STEPHEN M. RYAN        | PASSED - <i>Carl [Signature]</i>          | REVISED                 |
| DRAWN - h.t. duong               | ACTING ENGINEER OF BRIDGES AND STRUCTURES | REVISED                 |
| CHECKED - GRA/FT                 |   |                         |

**STATE OF ILLINOIS**  
**DEPARTMENT OF TRANSPORTATION**

**WEST ABUTMENT**  
**STRUCTURE NO. 037-0178**

SHEET NO. 11 OF 15 SHEETS

|                           |            |        |              |           |
|---------------------------|------------|--------|--------------|-----------|
| F.A.S. RTE.               | SECTION    | COUNTY | TOTAL SHEETS | SHEET NO. |
| 226                       | 3T & 3BR-1 | HENRY  | 210          | 52        |
| CONTRACT NO. 64F25        |            |        |              |           |
| ILLINOIS FED. AID PROJECT |            |        |              |           |