

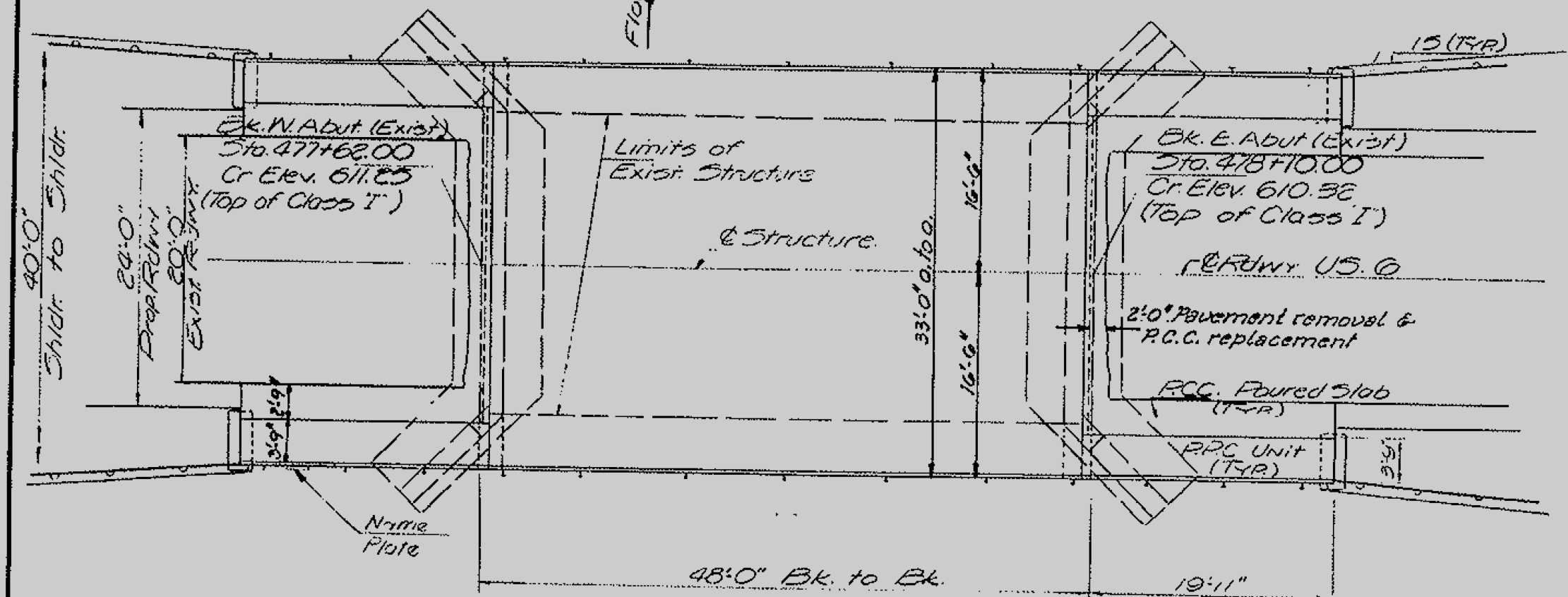
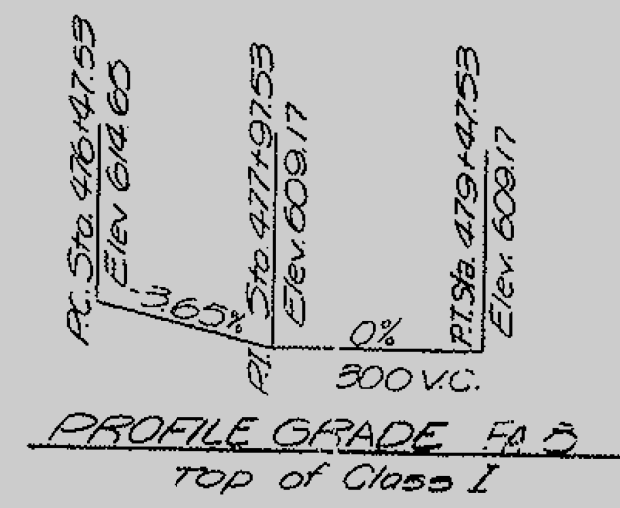
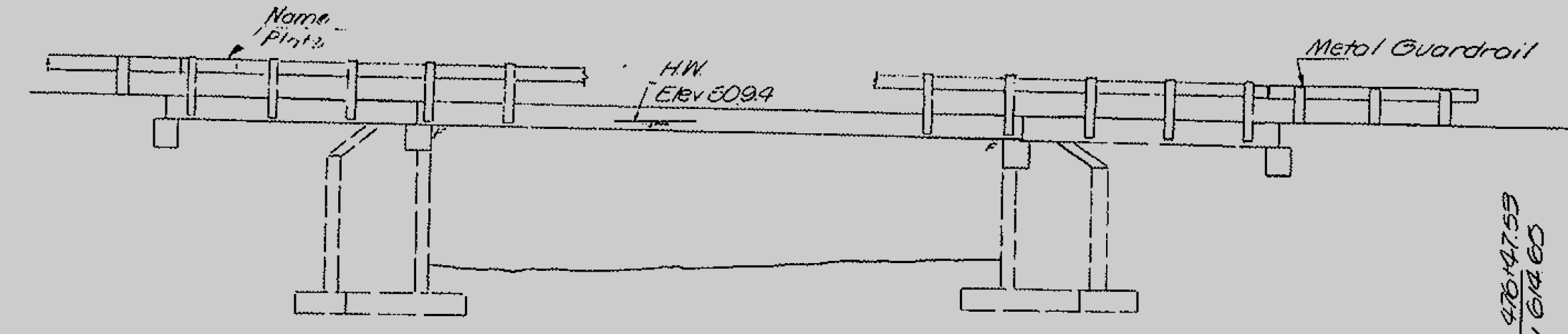
EXISTING STRUCTURE PLANS

(FOR REFERENCE ONLY)

B.M. on @ HDWL. Lt. Sta. 471+50 341' E. Bridge Abut. Elev. 608.74
 Existing Structure: Built as S.B.I. Rte. 7 Sec. 3B in 1921
 Superstr. is R.C. Through Girder. Substr. is R.C. Abuts.

STATE OF ILLINOIS
 DEPARTMENT OF TRANSPORTATION

| | | | | |
|-----------|---------|-------|--------------|-----------|
| ROUTE NO. | SECTION | SHEET | TOTAL SHEETS | SHEET NO. |
| U.S. 6 | 3BR | HENRY | 8 | 4 |
| SHEETS | | | | |



STATION 471+50
 BUILT 1921
 STATE OF ILLINOIS
 U.S. RTE. 6 - SEC. 3BR
 CHAINING H520
 NAME PLATE
 See Std. 2113

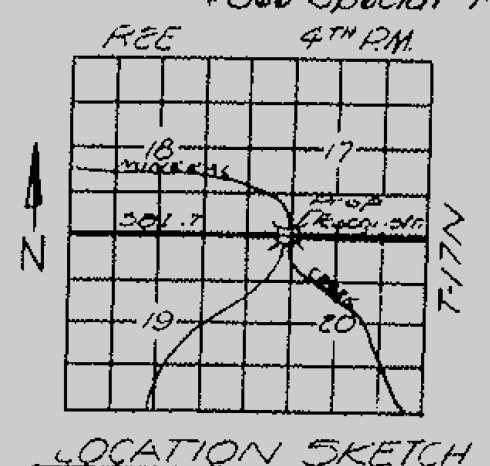
GENERAL NOTES

All reinforcement bars shall be lapped 6d diameters unless otherwise shown.
 It shall be the responsibility of the Contractor to verify all dimensions & conditions existing in the field prior to construction & ordering of materials.
 Expansion bolts shall consist of self-drilling expansion shields & 3/4" hooked bolts. Hooked bolts shall extend a minimum of 12" into new concrete except as otherwise shown.
 Shoulder transition to wingwall shall be sloped with broken concrete - cast incidental.
 Limits of Waterproofing Membrane System shall be two feet back of abutments and out to cut of deck.
 The top surface of the beams shall be finished in accordance with Article 505.06 of the Standard Specifications except that the surface shall not be roughened by brooming. The finished surface shall be free of depressions or high spots with sharp corners.

BILL OF MATERIAL

| ITEM | UNIT | SUB. | SUPER. | TOTAL |
|---|----------|-------|--------|-------|
| Portland Cement Concrete Pavement (10") | Sq. Yds. | | | 83 |
| Pavement Fabric | Sq. Yds. | | | 83 |
| Concrete Removal | Cu. Yds. | 9.0 | | 9.0 |
| Expansion Bolts (3/4") | Each | | | 84 |
| Class X Concrete | Cu. Yds. | 13.5 | 1.6 | 15.1 |
| Precast Concrete Bridge Slab | Sq. Ft. | | | 299 |
| Precast Prestressed Concrete Deck Beams (21") | Sq. Ft. | | 1,579 | 1,579 |
| Steel Rebar, Type 3 | Lbs. | | 176 | 176 |
| Reinforcement Bars | Lbs. | 1,750 | | 1,750 |
| Pavement Removal & R.C.C. Replacement, Type 2 (10") | Sq. Yds. | | | 9 |
| Removal of Existing Superstructures | Each | | | 1 |
| Waterproofing Membrane System | Sq. Yds. | | 191 | 191 |
| Bituminous Concrete Surface Course | Tons | | 20 | 20 |
| Portland Cement Mortar, Finishing Course | Lbs. | | 478 | 478 |
| Name Plate | Each | | | 1 |

* See Special Provisions



GENERAL PLAN & ELEVATION
 U.S. 6 OVER MINERAL CREEK
 SEC. 3BR
 HENRY COUNTY
 STATION 471+50

DESIGN STRESSES

FIELD UNITS
 Fc: 4000 psi (Sub)
 Fc: 20000 psi (Reinf)
 Fc: 75 psi (Footng)
 n: 10

WATERWAY INFORMATION

Drainage: E3 Sa M
 Character: level & rolling
 Present Opening: 307.5a Ft
 Road Opening: 307.5a Ft
 Proposed Opening: 307.5a Ft
 Q(50): 3960 cfs

PRECAST PRESTRESSED UNITS

Fc: 5000 psi
 Fc: 4000 psi
 Fc: 270,000 psi (Strands)
 Fc: 188,700 psi (Strands)

Allow for 25 pps/5a Ft for Fut W.S.
 CHAINING H520-44

| | |
|------------------------------|--------------------------------------|
| DESIGNED: <i>John McCull</i> | EXAMINED: <i>May 5 1971</i> |
| CHECKED: <i>John McCull</i> | PASSED: <i>John McCull</i> |
| DRAWN: <i>FEISSAND</i> | APPROVED: <i>Richard H. Goltzman</i> |
| CHECKED: <i>CM</i> | |

REV 2 2775 STD 83H

Rev. 4-1-75