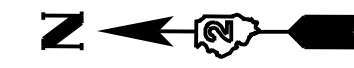
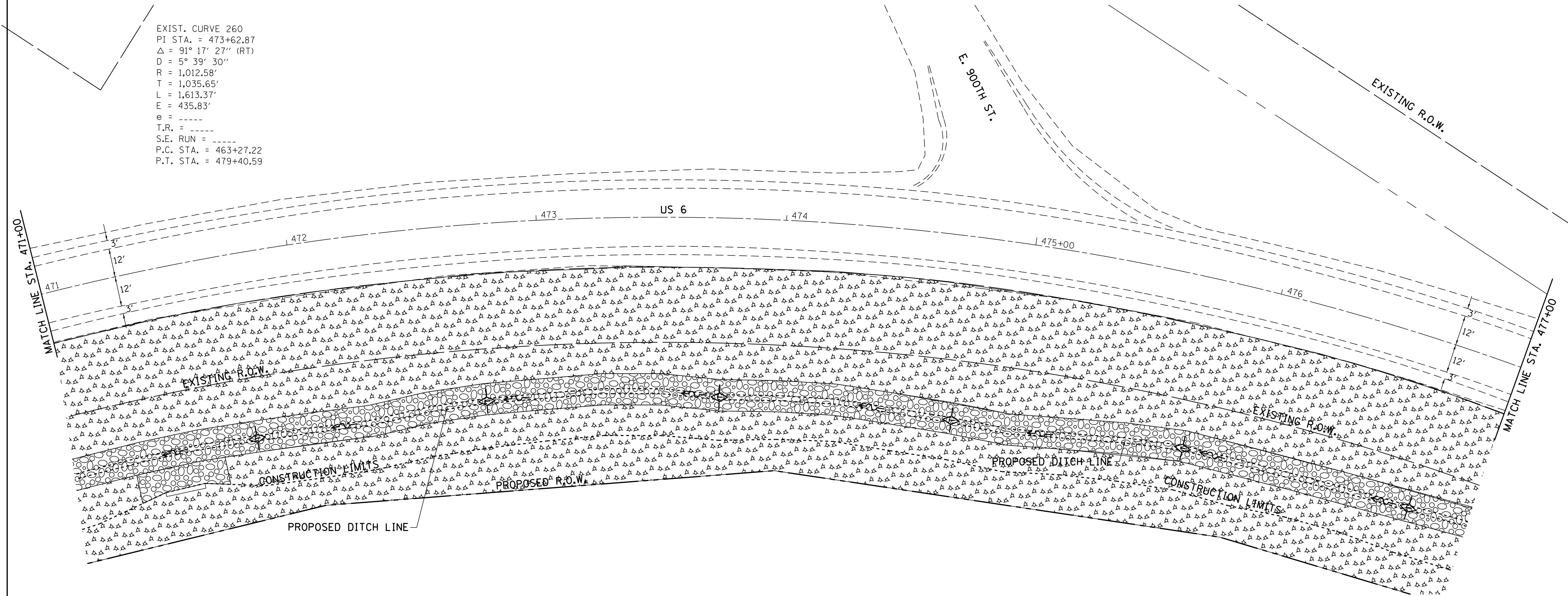
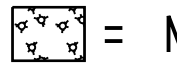
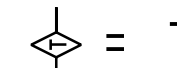
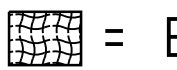
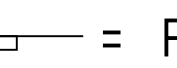
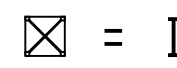
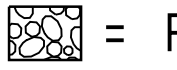
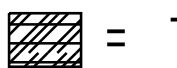


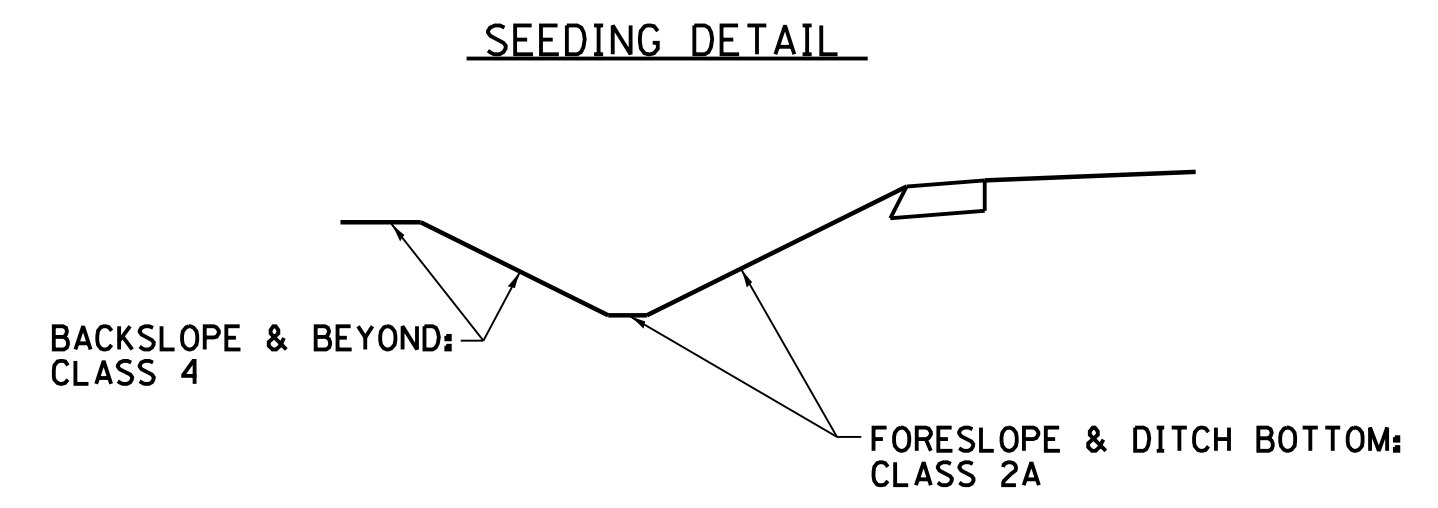
EROSION CONTROL DETAILS



EXIST. CURVE 260
 PI STA. = 473+62.87
 $\Delta = 91^\circ 17' 27''$ (RT)
 D = 5° 39' 30"
 R = 1,012.58'
 T = 1,035.65'
 L = 1,613.37'
 E = 435.83'
 e = -----
 T.R. = -----
 S.E. RUN = -----
 P.C. STA. = 463+27.22
 P.T. STA. = 479+40.59



-  = MULCH METHOD 3
-  = TEMPORARY DITCH CHECKS
-  = EROSION CONTROL BLANKET
-  = PERIMETER EROSION BARRIER
-  = INLET PIPE PROTECTION
-  = RIP RAP
-  = TURF REINFORCEMENT MAT



FILE NAME =	USER NAME = cushmanbw	DESIGNED -	REVISED -
ca:\pwwork\pwwork\cushmanbw\d0169166\200809-shr-eros.dgn		DRAWN -	REVISED -
Default	PLOT SCALE = 20.0000' / in.	CHECKED -	REVISED -
	PLOT DATE = Fri Oct 19 13:58:54 2012	DATE -	REVISED -

STATE OF ILLINOIS
 DEPARTMENT OF TRANSPORTATION

EROSION CONTROL DETAILS

SCALE: SHEET OF SHEETS STA. TO STA.

F.A.S. RTE.	SECTION	COUNTY	TOTAL SHEETS	SHEET NO.
226	3T & 3BR-1	HENRY	210	84
CONTRACT NO. 64F25				
ILLINOIS FED. AID PROJECT				