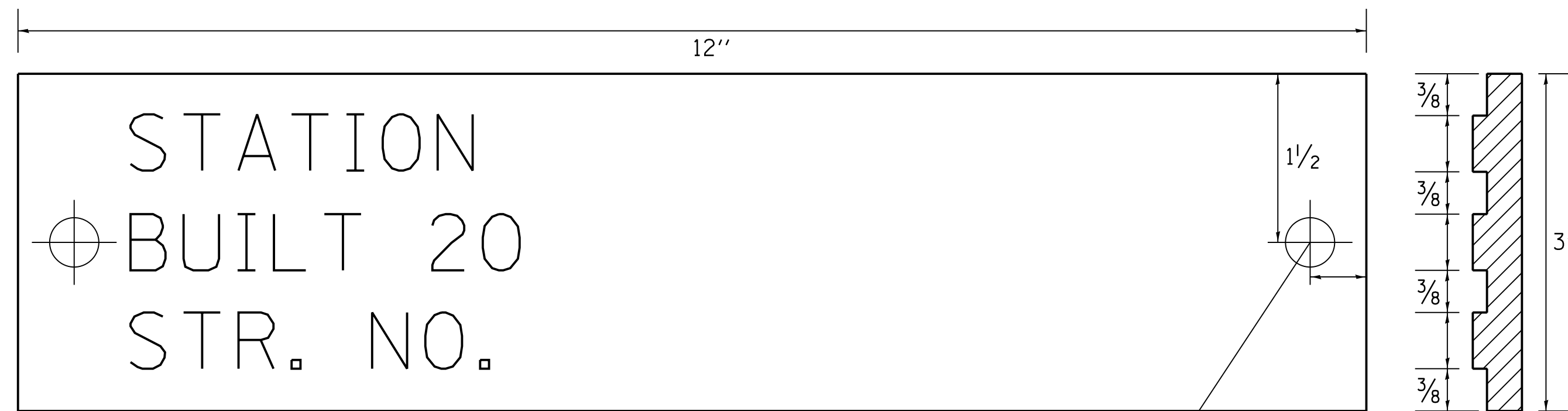
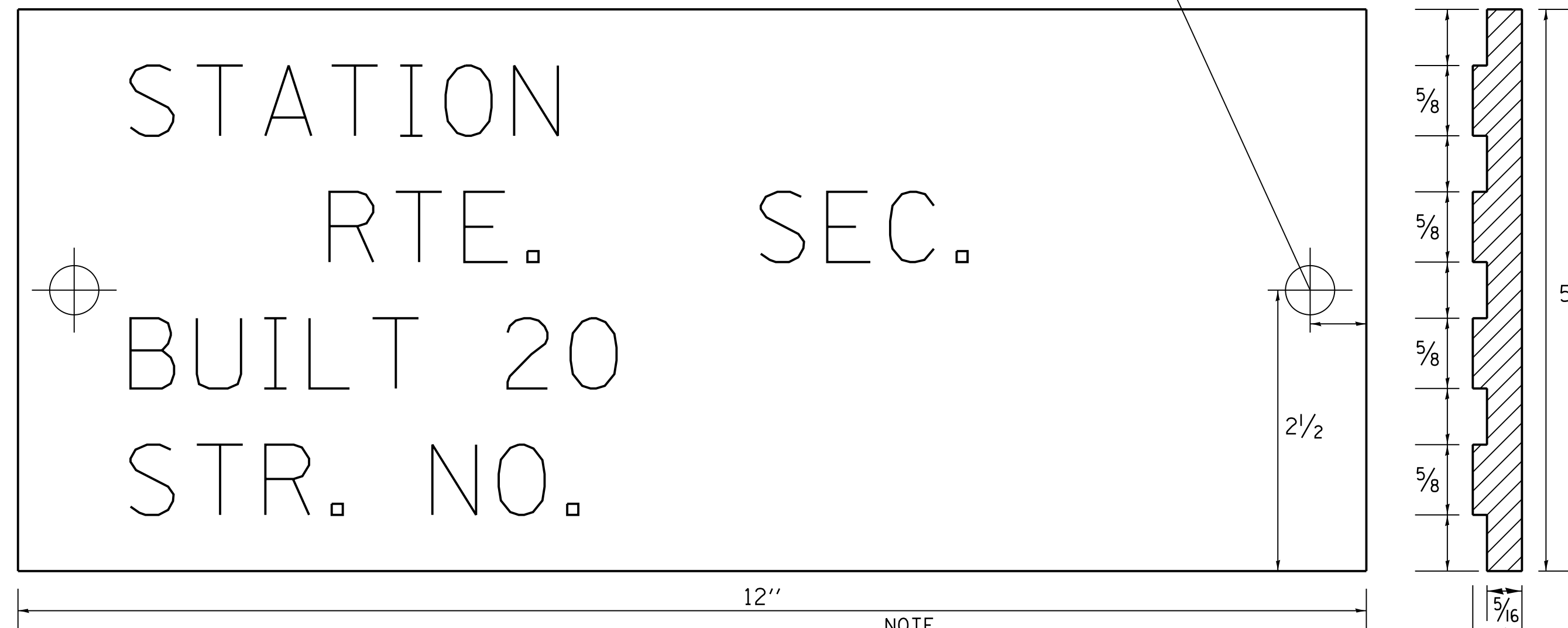


NAME PLATE FOR CULVERTS

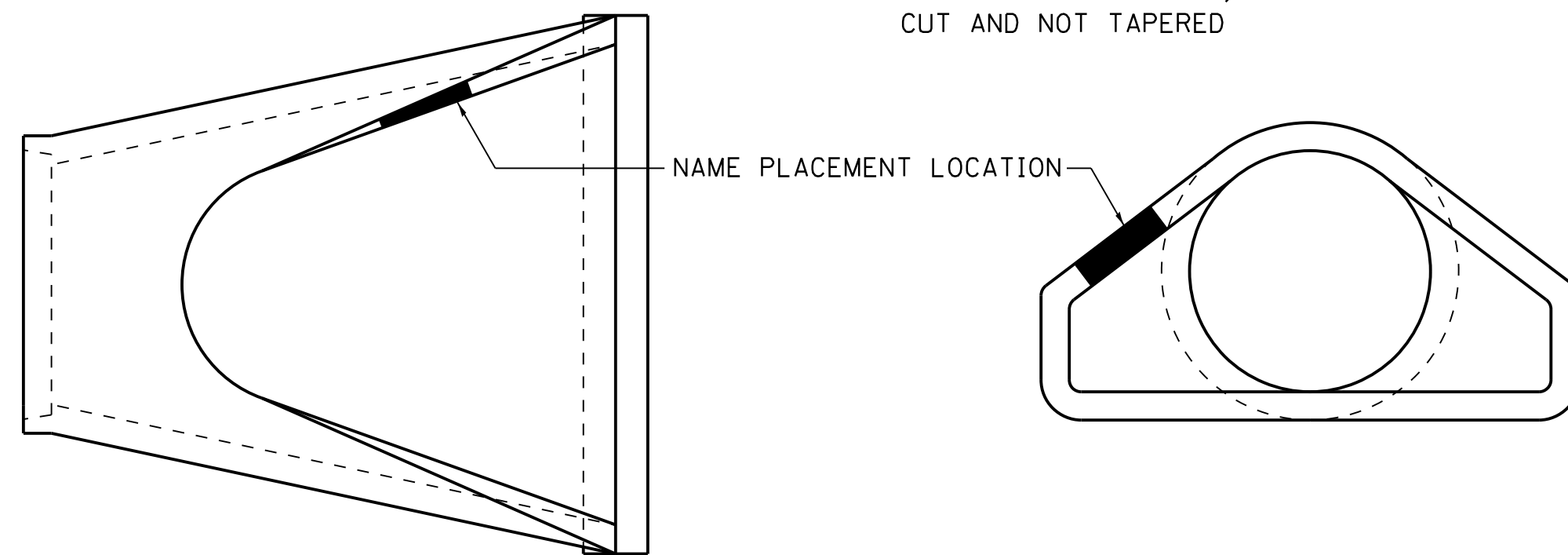
FOR 24''-42'' PIPE CULVERTS



FOR 48''-84'' PIPE CULVERTS



NOTE
LETTERING RAISED 1/8, SQUARE
CUT AND NOT TAPERED



DESIGNERS NOTE

NAME PLATES SHALL BE FURNISHED & INSTALLED ACCORDING TO SECTION 515 OF THE STANDARD SPECIFICATIONS, EXCEPT 2 BOLTS SHALL BE USE TO FASTEN THE PLATE TO THE END SECTION.

USE STANDARD 515001 FOR BRIDGES AND MULTI-CELL CULVERTS WITH SPANS OF 20' OR MORE MEASURED ALONG THE CENTERLINE AT THE HIGHWAY.

USE THIS DETAIL FOR ALL OTHER PIPE CULVERTS & BOX CULVERTS WITH STRUCTURE NUMBERS. INCLUDE THE INFORMATION TO FILL OUT THE NAME PLATE FOR EACH CULVERT.

IN BOTH CASES INCLUDE A PAY ITEM FOR NAME PLATES.

STATION	STRUCTURE NO.
STA. 318+25	037-1186
STA. 339+15	037-1188
STA. 375+32	037-0178
STA. 393+64	037-1187
STA. 397+17	037-1191
STA. 466+50	037-1192
STA. 479+36	037-1189
STA. 492+34	037-1190

REVISED - 5-27-09

REVISED -	REGION 2 / DISTRICT 2 STANDARD	F.A.S. RTE.	SECTION	COUNTY	TOTAL SHEETS	SHEET NO.	
REVISED -		226	3T & 3BR-1	HENRY	210	102	
REVISED -		CONTRACT NO. 64F25					
REVISED -		SCALE: 20,000' / 1"	SHEET NO.	OF	SHEETS	STA.	TO STA.
REVISED -		FED. ROAD DIST. NO. ILLINOIS FED. AID PROJECT					