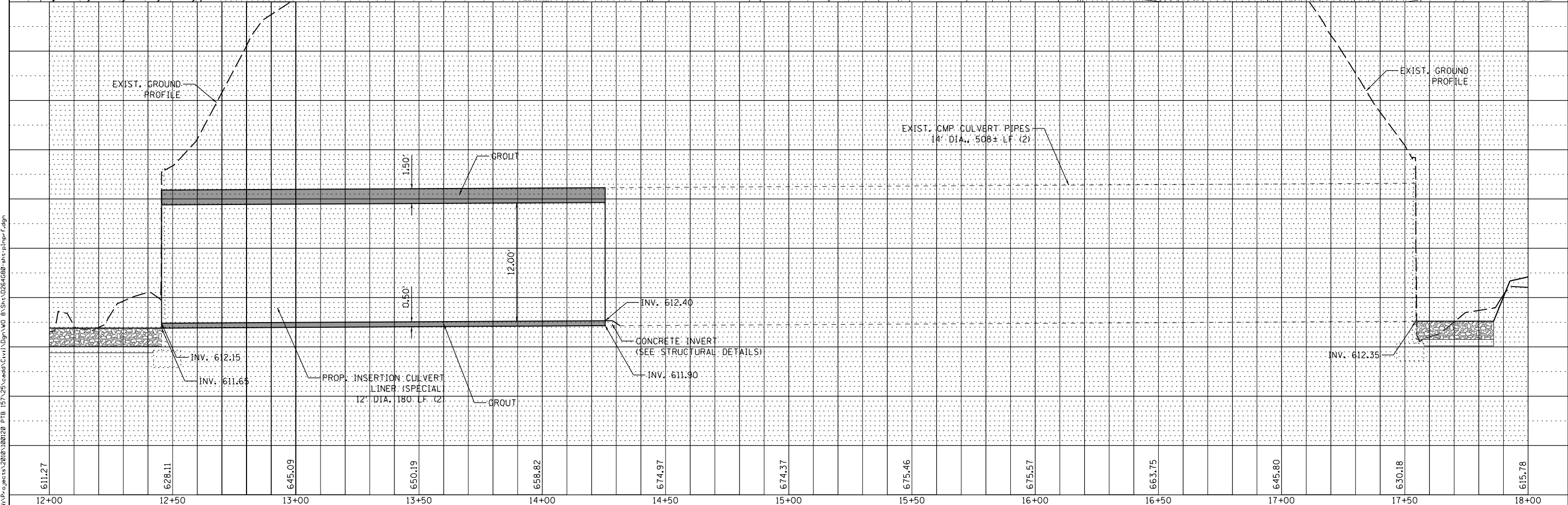
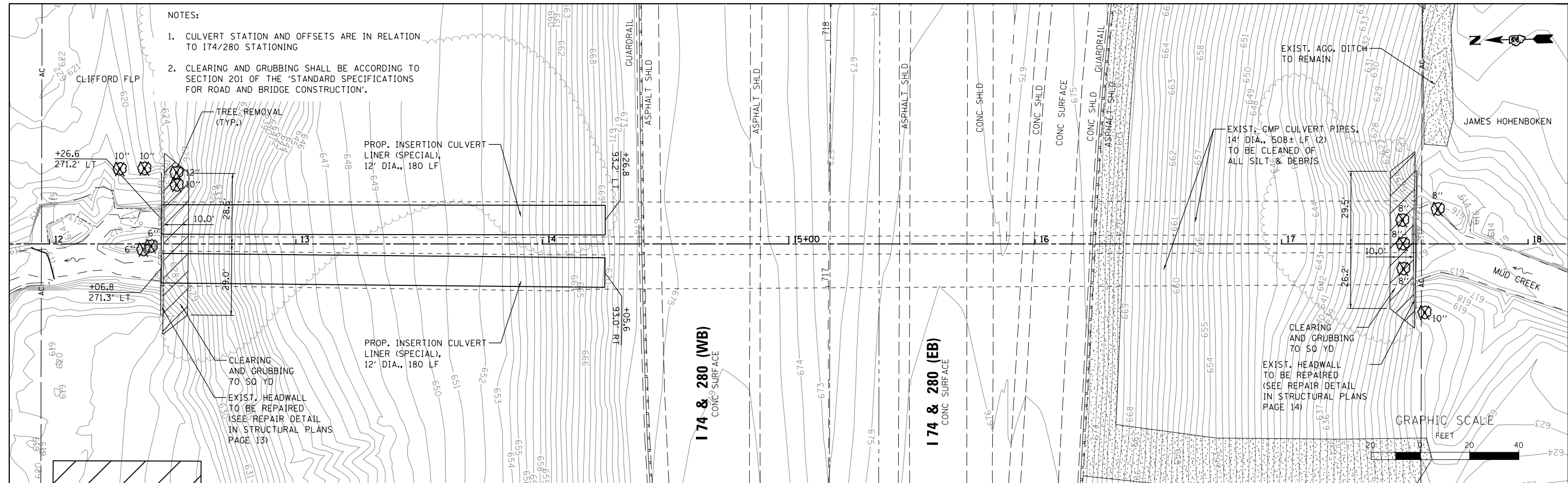


NOTES:

1. CULVERT STATION AND OFFSETS ARE IN RELATION TO 174/280 STATIONING
2. CLEARING AND GRUBBING SHALL BE ACCORDING TO SECTION 201 OF THE 'STANDARD SPECIFICATIONS FOR ROAD AND BRIDGE CONSTRUCTION'.

PLAN	SURVEYED	DATE
	PLOTTED	
	ALIGNED	
	CHECKED	
	NO. _____	
	FILE NAME	

PROFILE	SURVEYED	DATE
	PLOTTED	
	GRADES	
	CHECKED	
	NO. _____	
	STRUCTURE	
	NOTATIONS	
	CHKD	



WILLS BURKE KELSEY ASSOCIATES LTD.
 116 West Main Street, Suite 201
 St. Charles, Illinois 60174

USER NAME = nparris	DESIGNED -	REVISED -
	DRAWN - NDP	REVISED -
PLOT SCALE = 1:40	CHECKED - RPD	REVISED -
PLOT DATE = 1/29/2013	DATE -	REVISED -

**STATE OF ILLINOIS
 DEPARTMENT OF TRANSPORTATION**

PLAN & PROFILE
 SCALE: 1"=20'
 SHEET NO. 1 OF 1 SHEETS
 STA. TO STA.

F.A.I. RTE. 74/280	SECTION (37-2-1M)	COUNTY HENRY	TOTAL SHEETS 27	SHEET NO. 6
CONTRACT NO. 64G80			ILLINOIS FED. AID PROJECT	

FILE NAME = W:\Projects\2010\100120_PTB_157\25\cadd\Civil\Dgn\WD_B_Sht_1036\680-sh-p\planr.edgn