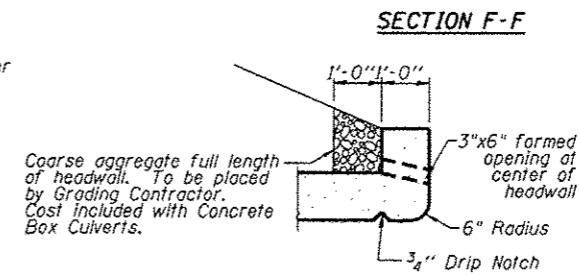
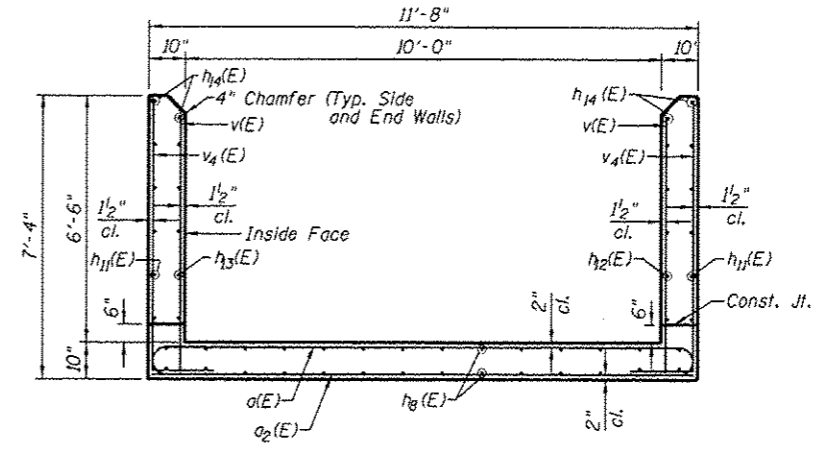
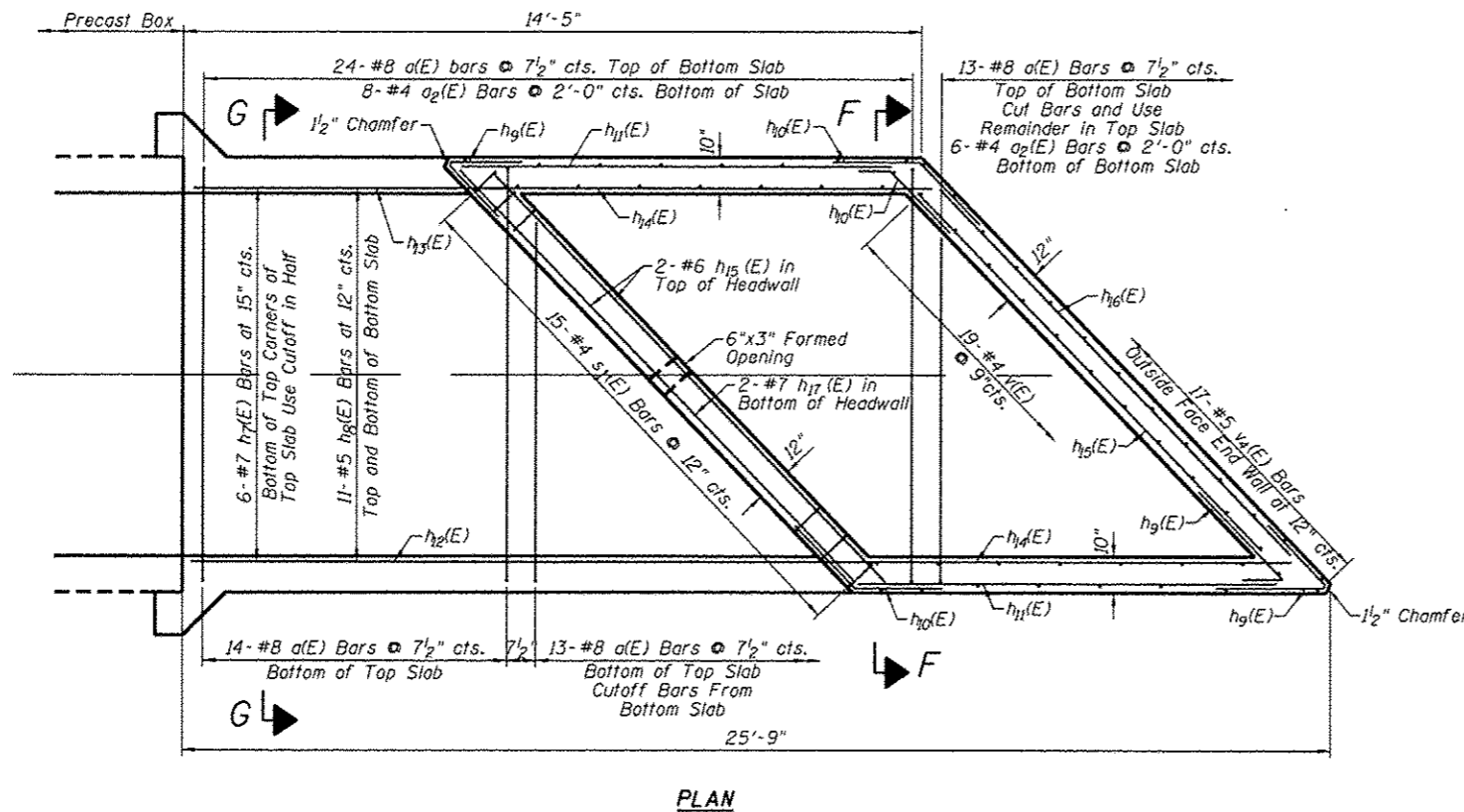


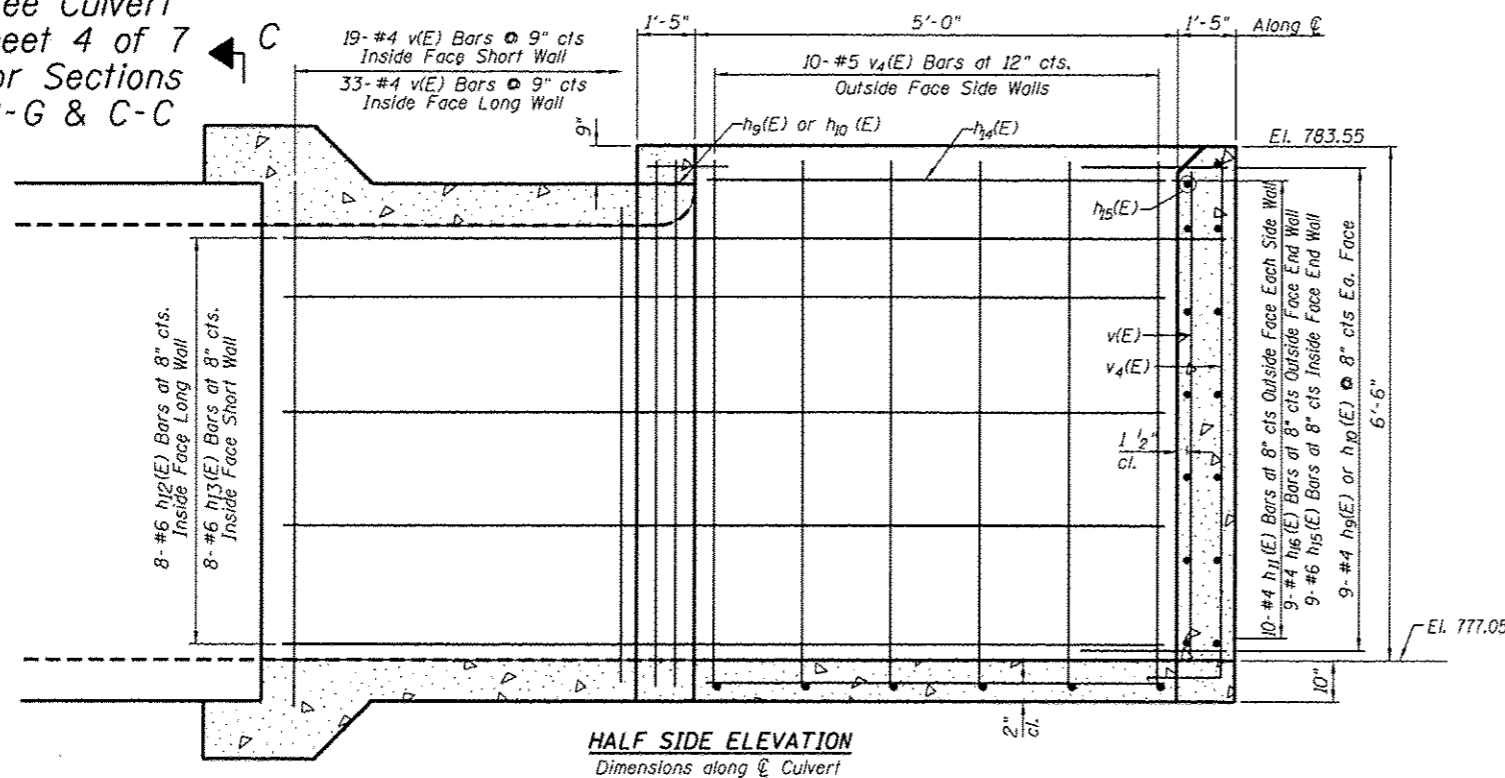
BOX CULVERT DETAILS
US 20 /IL RTE 84
F.A.P. RTE 301 SECTION 29T-2
JO DAVIESS COUNTY
STA. 876 + 47



BILL OF MATERIAL
NORTH END SECTION

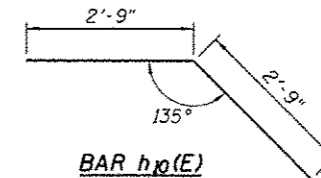
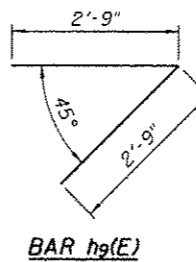
Bar	No.	Size	Length	Shape	
a(E)	51	#8	13'-2"	□	
a2(E)	14	#4	11'-0"	□	
h7(E)	6	#7	25'-0"	—	
h8(E)	11	#5	39'-2"	—	
h9(E)	19	#4	5'-6"	—	
h10(E)	19	#4	5'-6"	—	
h11(E)	20	#4	6'-3"	—	
h12(E)	8	#6	24'-6"	—	
h13(E)	8	#6	13'-3"	—	
h14(E)	4	#5	7'-0"	—	
h15(E)	11	#6	15'-6"	—	
h16(E)	9	#4	15'-6"	—	
h17(E)	2	#7	15'-6"	—	
s1(E)	15	#4	4'-10"	□	
v	71	#4	6'-4"	—	
v4	37	#5	9'-0"	—	
x(E)	46	#4	6'-3"	—	
x1(E)	6	#4	22'-4"	—	
Concrete Box Culverts				Cu. Yd.	23.7
Reinforcement Bars, Epoxy Coated				Pound	4,750

See Culvert Sheet 4 of 7 for Sections G-G & C-C



BAR v4(E)

BAR h7(E) & h8(E)
 Cut Diagram



USER NAME * Jamie Shaw	DESIGNED - SB	REVISED -
WES JOB # * 2120114	DRAWN - BEH	REVISED -
PLOT SCALE * 1/8" = 1'-0"	CHECKED - DB	REVISED -
PLOT DATE * 12/7/2012	DATE - 12/01/2012	REVISED -

STATE OF ILLINOIS
DEPARTMENT OF TRANSPORTATION

BOX CULVERT DETAILS STA. 876 + 47
UPSTREAM END STR. NO. 043-1113

SHEET 3 OF 7 SHEETS STA. 876+47

F.A.P. RTE. 301	SECTION 29T-2	COUNTY JO DAVIESS	TOTAL SHEETS 52	SHEET NO. 23
CONTRACT NO. 64H17			ILLINOIS FED. AID PROJECT	