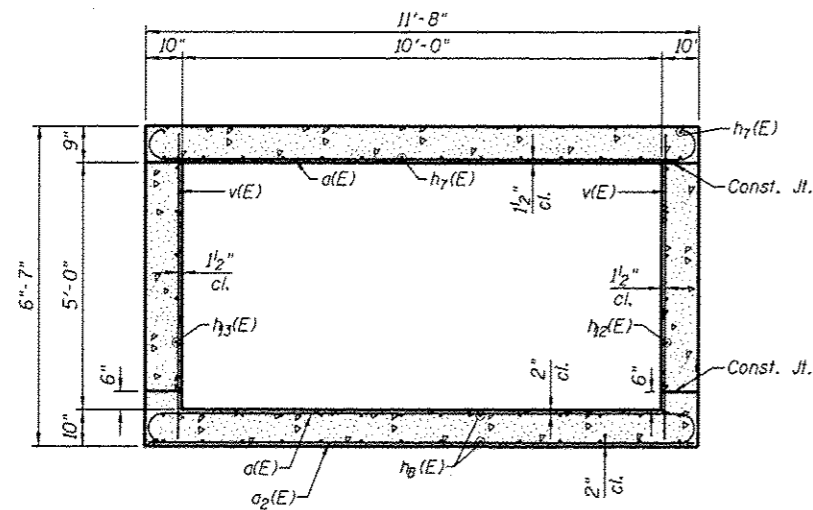
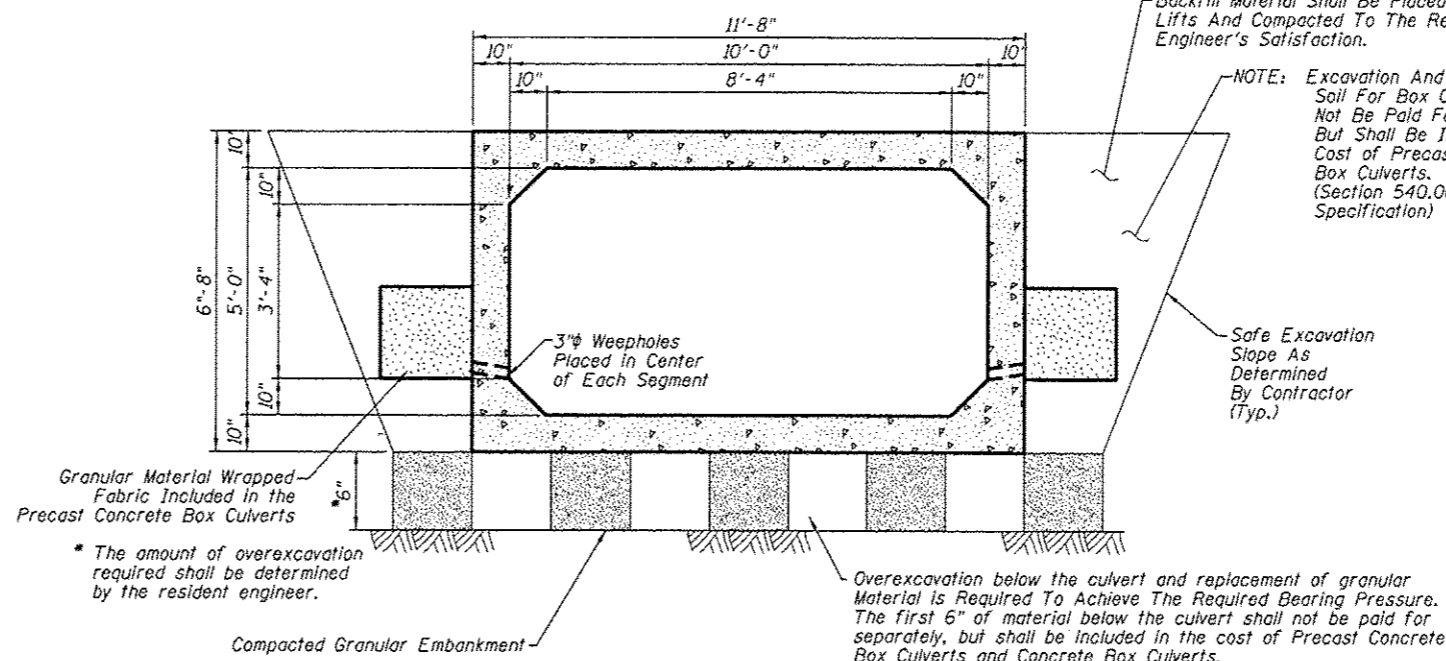


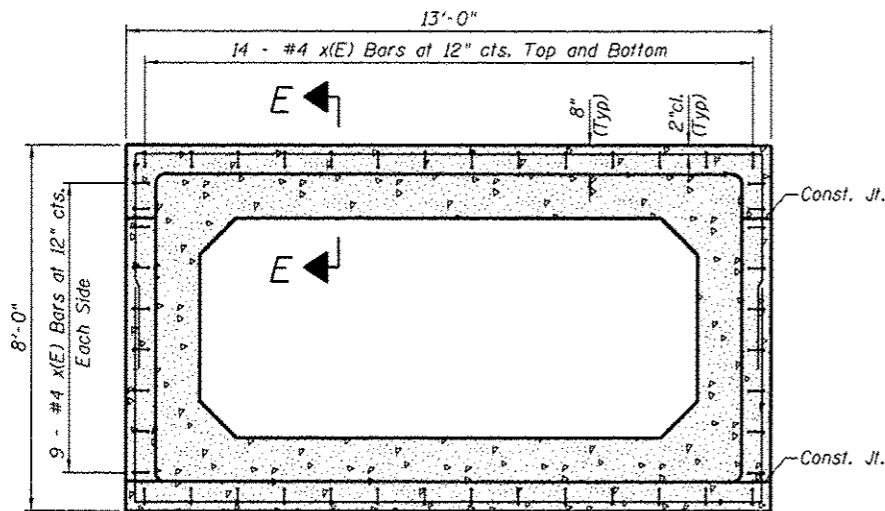
BOX CULVERT DETAILS
US 20 /IL RTE 84
F.A.P. RTE 301 SECTION 29T-2
JO DAVIESS COUNTY
STA. 876 + 47



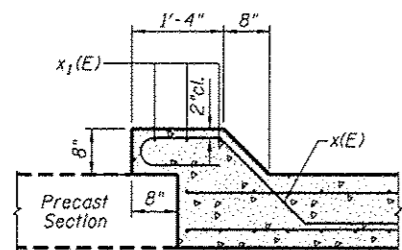
SECTION G-G
TYPICAL SECTION THRU
NORTH CAST-IN-PLACE END SECTION



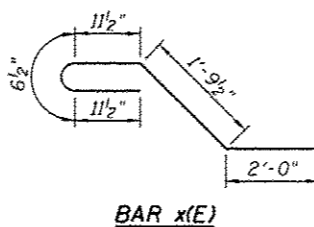
SECTION D-D
TYPICAL SECTION THRU PRECAST CULVERT



SECTION C-C
TYPICAL SECTION THRU PRECAST TO
CAST-IN-PLACE CONNECTION COLLAR
(Typical For Both End Sections)

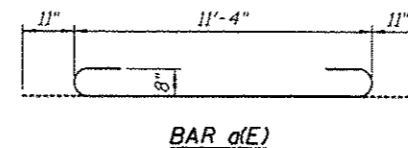


SECTION E-E
TYPICAL SECTION THRU PRECAST TO
CAST-IN-PLACE CONNECTION COLLAR
(Typical For Both End Sections)



BAR s(E)

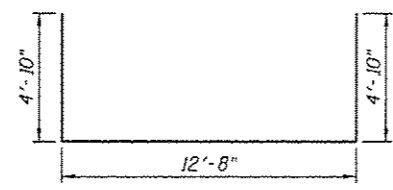
BAR s1(E)



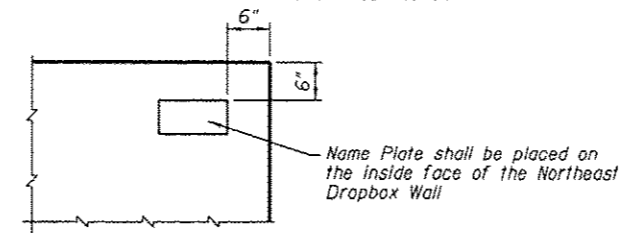
BAR a(E)

Station 876+47
 Built by
 State of Illinois
 F.A.P. Rte 301 Sec. 29T-2
 Loading HL-93
 Structure No. 043-1113

NAME PLATE
 See Std. 515001-03



BAR x1(E)



NAME PLATE LOCATION
 Northeast Wall

GENERAL NOTES

- All work and materials shall be in accordance with the Illinois Department of Transportation (IDOT) Standard Specifications for Road and Bridge Construction adopted January 1, 2012 and latest supplemental specifications and recurring special provisions, unless noted otherwise on these plans or special provisions.
- The Contractor shall verify all dimensions in the field prior to commencing work. The engineer shall be notified of any discrepancies which may exist, prior to proceeding with the work.
- Any information concerning type or location of underground and other utilities is not guaranteed to be accurate or all inclusive. The Contractor is responsible for making his own determinations as to the type and location of the utilities as may be necessary to avoid damage thereto. Contractor shall call J.U.L.I.E. prior to excavation.
- The Contractor is responsible for design, installation and removal of all excavation support systems.
- The excavation and work area shall be properly drained at all times during construction. All wet, loose, frozen or other unsuitable material shall be removed prior to placement of concrete or compacted backfill. The cost of any pumping required shall be included in the cost of "Concrete Box Culverts".
- It shall be the responsibility of the Contractor to divert the stream flow during construction in order to keep the construction areas free of water. The method of water diversion shall be subject to the approval of the Engineer and cost shall be included with "Concrete Box Culverts".

CAST-IN-PLACE CONCRETE NOTES

- All cast-in-place concrete work shall be in accordance with Section 540 of the Illinois Department of Transportation (IDOT) Standard Specifications for Road and Bridge Construction adopted January 1, 2012, supplemental specifications and recurring special provisions and as noted below.
- Reinforcement bars shall conform to the requirements of ASTM A 706 GR60.
- Exposed edges of cast-in-place concrete shall be beveled 3/4".
- All construction joints shall be bonded.
- Concrete mix designs shall be submitted to the Engineer for review and approval a minimum of 7 days prior to ordering or placing concrete.
- Backfill material on all sides of the box and wings shall be compacted in accordance with Section 502 using walk behind tampers.



USER NAME = Jamie Shaw
 WEG JOB # = 212R114
 PLOT SCALE = 1/8" = 1'-0"
 PLOT DATE = 12/7/2012

DESIGNED - SB
 DRAWN - BEH
 CHECKED - DB
 DATE - 12/07/2012

REVISED -
 REVISED -
 REVISED -
 REVISED -

STATE OF ILLINOIS
DEPARTMENT OF TRANSPORTATION

BOX CULVERT DETAILS STA. 876 + 47

SHEET 4 OF 7 SHEETS STA. 876+47

F.A.P. RTE.	SECTION	COUNTY	TOTAL SHEETS	SHEET NO.
301	29T-2	JO DAVIESS	52	24
				CONTRACT NO. 64H17
ILLINOIS FED. AID PROJECT				