

F.A.P. RTE.	SECTION	COUNTY	TOTAL SHEETS	SHEET NO.
573	D2 Deck Repair 2013-2	LEE	22	1
FED. ROAD DIST. NO.	ILLINOIS	CONTRACT NO. 64H74		

INDEX OF SHEETS:

- 1 COVER SHEET, STANDARDS, DISTRICT STANDARDS
- 2 SUMMARY OF QUANTITY, GENERAL NOTES
- 3 - 7 TRAFFIC CONTROL PLANS
- 8 - 9 DISTRICT STANDARDS
- 10 HMA RESURFACING & TAPER DETAIL
- 11 - 22 BRIDGE PLANS

HIGHWAY STANDARDS:

- 701001-02 OFF-RD OPERATIONS, 2L, 2W, MORE THAN 15' (4.5 m) AWAY
- 701006-04 OFF-RD OPERATIONS, 2L, 2W, 15' (4.5 m) TO 24" (600 mm) FROM PAVEMENT EDGE
- 701011-03 MOVING OPERATIONS, 2L, 2W, DAY ONLY
- 701201-04 LANE CLOSURE, 2L, 2W, DAY ONLY, FOR SPEEDS > 45 MPH
- 701301-04 LANE CLOSURE, 2L, 2W, SHORT TIME OPERATIONS
- 701311-03 LANE CLOSURE, 2L, 2W, MOVING OPERATIONS-DAY ONLY
- 701321-13 LANE CLOSURE, 2L, 2W, BRIDGE REPAIR WITH BARRIER
- 701326-04 LANE CLOSURE, 2L, 2W, PAVEMENT WIDENING, FOR SPEEDS > 45 MPH
- 701901-02 TRAFFIC CONTROL DEVICES
- 704001-07 TEMPORARY CONCRETE BARRIER
- 720011-01 METAL POSTS FOR SIGNS, MARKERS & DELINEATORS
- 728001-01 TELESCOPING STEEL SIGN SUPPORT
- 729001-01 APPLICATIONS OF TYPES A & B METAL POSTS (FOR SIGNS & MARKERS)
- 780001-03 TYPICAL PAVEMENT MARKINGS

DISTRICT STANDARDS:

- 23.4a - HOT-MIX ASPHALT SHOULDER
- 99.4 - STOP LINE SIGN FOR TEMPORARY SIGNALS
- 39.2 - INFORMATIONAL WARNING SIGNS (FOR NARROW TRAVEL LANES)
- 75.2 - ENTRANCE SIGN FOR USE WITH TEMPORARY SIGNALS
- 40.1 - TRAFFIC CONTROL FOR ROAD CLOSURE

J.U.L.I.E.
JOINT UTILITY LOCATION INFORMATION FOR EXCAVATION
1-800-892-0123
OR 811

PROJECT ENGINEER: Mahmoud Etemadi (815)-284-5393

LEE CENTER TOWNSHIP, SECTION 2
BRADFORD TOWNSHIP, SECTION 35
WILLOW CREEK TOWNSHIP, SECTION 17, 20

CONTRACT NO. 64H74

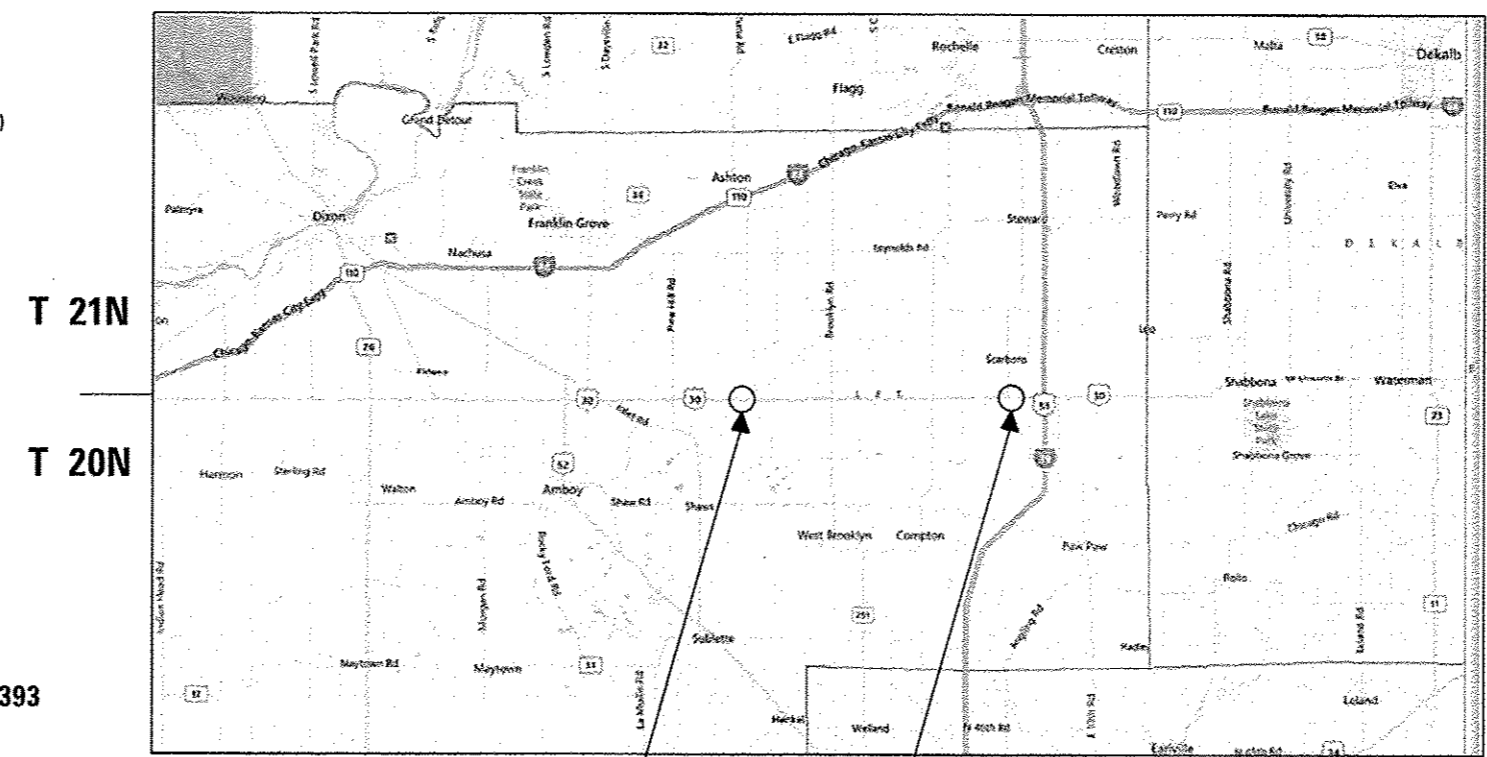
STATE OF ILLINOIS
DEPARTMENT OF TRANSPORTATION
DIVISION OF HIGHWAYS

PROPOSED
HIGHWAY PLANS

FAP ROUTE 573 (US-30)
SECTION D2 Deck Repair 2013-2
LEE COUNTY
C-92-008-13



R 11E, R 2E

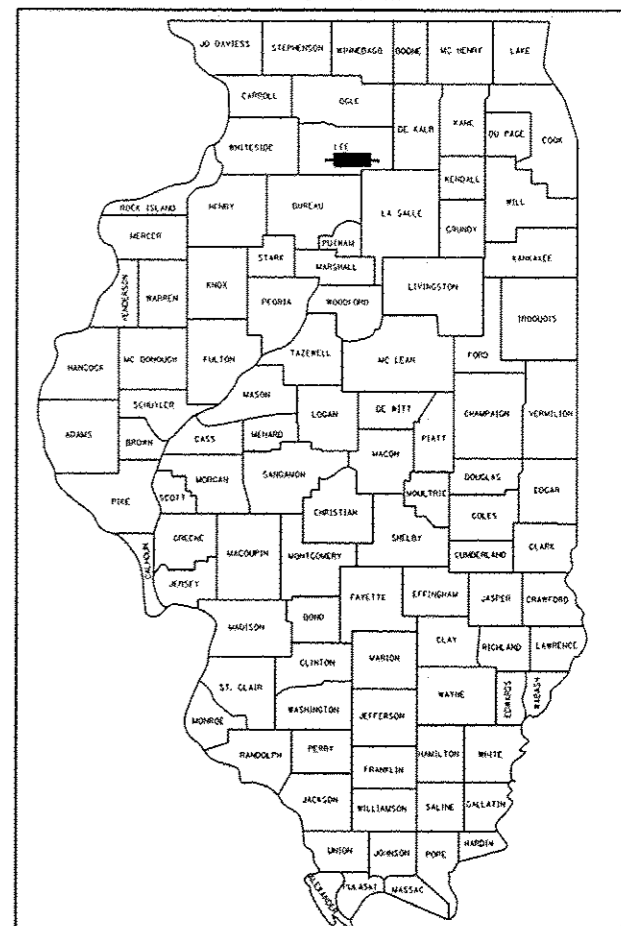


PROJECT LOCATION

SN: 052-0034

SN: 052-0035

D-92-048-12



LOCATION OF SECTION INDICATED THUS: - [black rectangle] -

STATE OF ILLINOIS
DEPARTMENT OF TRANSPORTATION
DIVISION OF HIGHWAYS

SUBMITTED 1-28 20 13
Paul Koeter
DEPUTY DIRECTOR OF HIGHWAYS, REGION ENGINEER

Feb 1 20 13
John D. Baranzelli, P.E.
acting ENGINEER OF DESIGN AND ENVIRONMENT

Feb 1 20 13
Omer Osman, P.E.
DIRECTOR OF HIGHWAYS, CHIEF ENGINEER

PRINTED BY THE AUTHORITY
OF THE STATE OF ILLINOIS