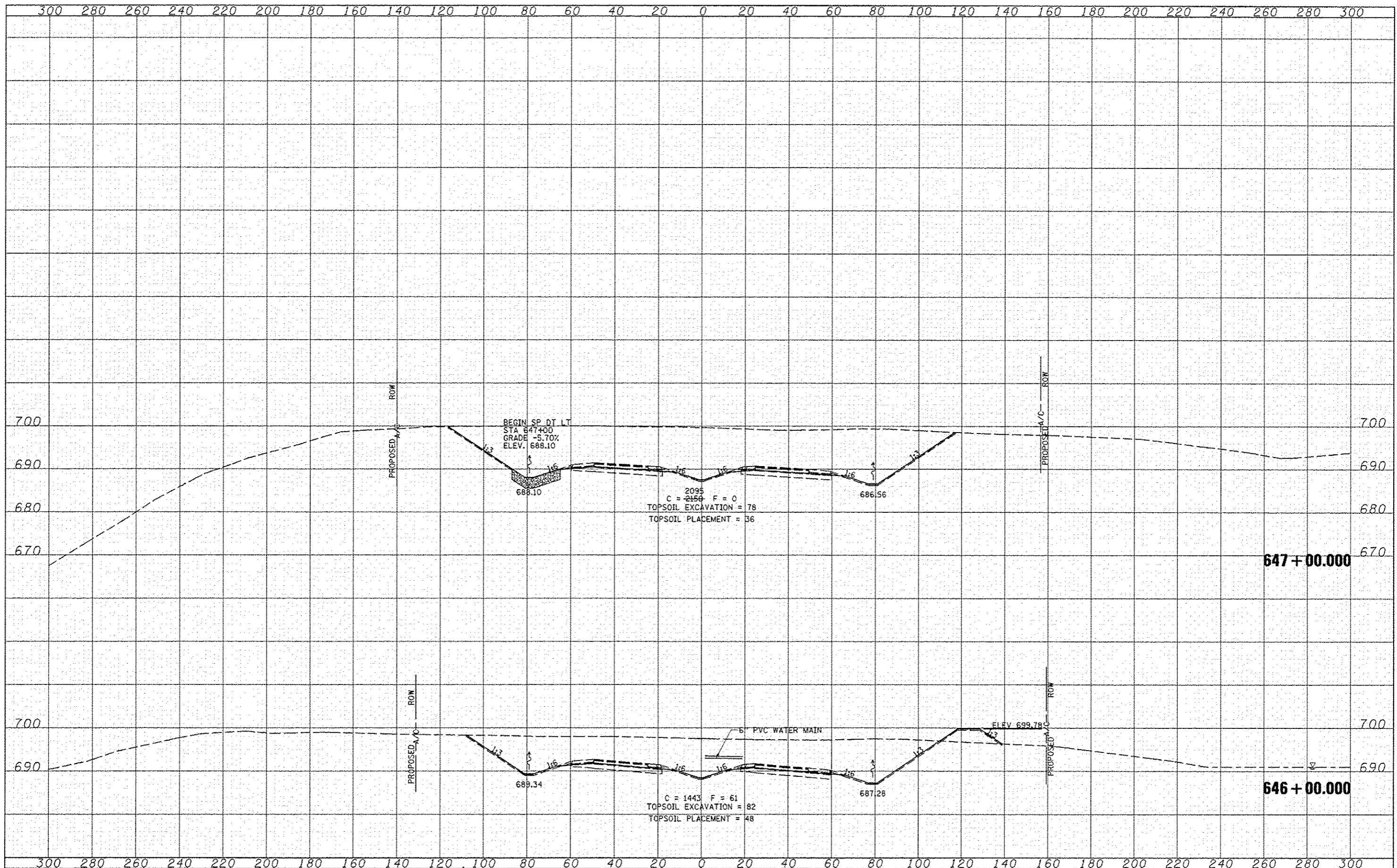


DATE	
BY	
FINN	
SURVEY	
NOTE BOOK	
AREAS CHECKED	

DATE	
BY	
ORIGINAL	
SURVEY	
NOTE BOOK	
AREAS CHECKED	



FILE NAME * \\transportation\289\Grading Plans\6400 Sheet	USER NAME * jdan	DESIGNED - JRB	REVISED Δ 02/21/2013	STATE OF ILLINOIS DEPARTMENT OF TRANSPORTATION	FAP ROUTE 407 (IL RTE 336) CROSS SECTIONS		F.A.P. RTE. 407	SECTION (55-31A)	COUNTY MCDONOUGH	TOTAL SHEETS 671	SHEET NO. 395	
	PLT SCALE * 48.00' / IN.	CHECKED - AWM	REVISED -		SCALE: 1" = 20' H 1" = 100' V	SHEET NO. 65 OF 176 SHEETS STA. 646+00.000 TO STA. 647+00.000		ILLINOIS FED. AID PROJECT				
	PLT DATE * 2/21/2013	DATE - 12-12-12	REVISED -									
CONTRACT NO. 68A42												