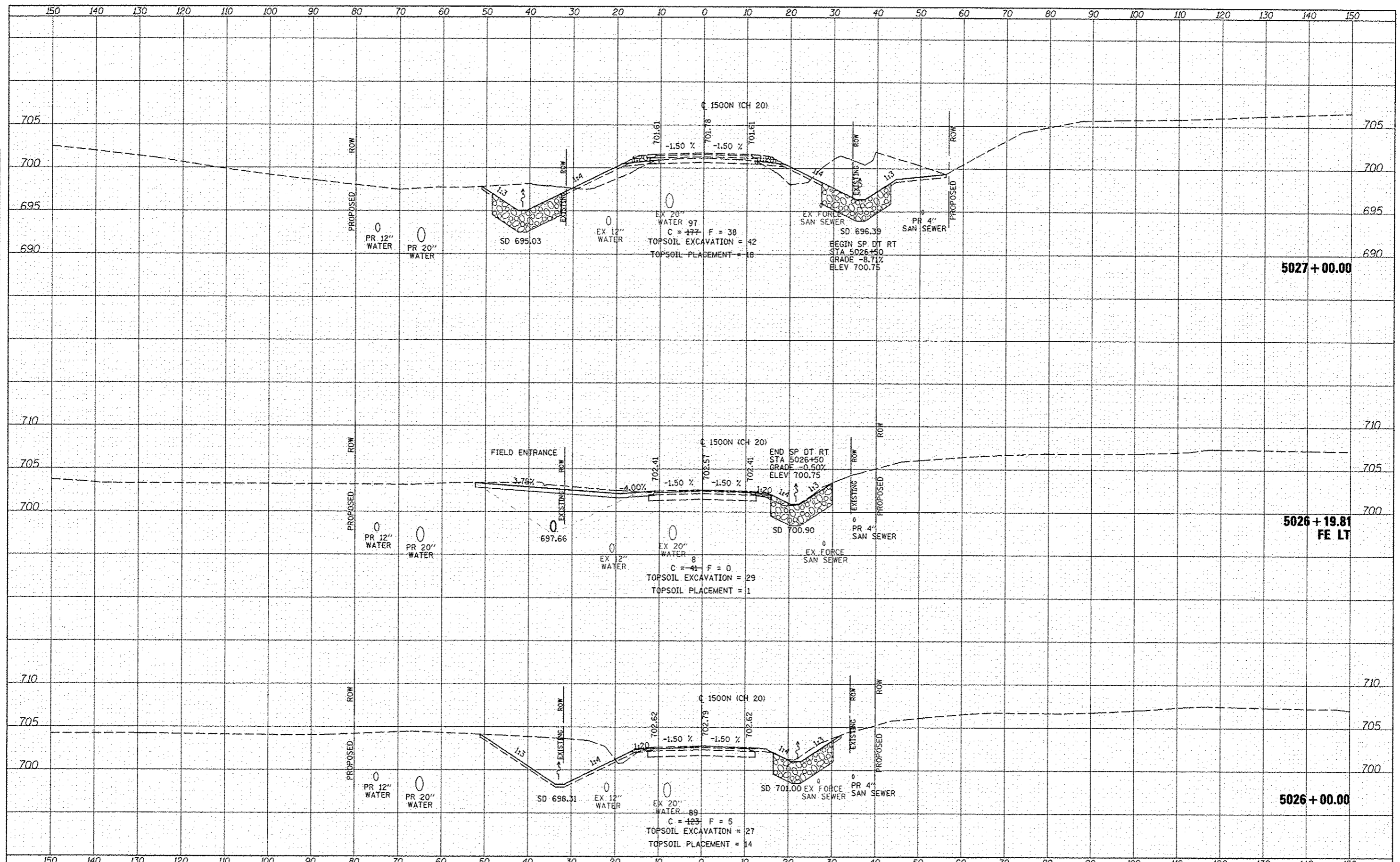


DATE	
BY	
FINAL SURVEY	
DESIGNED	
DRAWN	
CHECKED	
DATE	

DATE	
BY	
ORIGINAL SURVEY	
DESIGNED	
DRAWN	
CHECKED	
DATE	



FILE NAME: \\Transportation\289\Grading Plans\CADD Sheets\460A42-sh1-xsh1H20.dgn	USER NAME: jman	DESIGNED: JRB	REVISED: 02/21/2013	<b>STATE OF ILLINOIS</b> <b>DEPARTMENT OF TRANSPORTATION</b>	<b>FAP 407 (IL RTE 336)</b> <b>CROSS SECTIONS - 1500N (CH 20)</b>	F.A.P. RTE. 407	SECTION 155-31A	COUNTY McDONOUGH	TOTAL SHEETS 671	SHEET NO. 576
PLOT SCALE: 20.00' / 1"	CHECKED: AWM	DATE: 12-12-12	REVISED:			SCALE: 1" = 20.00' H, 1" = 5.00' V	SHEET NO. 19 OF 27 SHEETS	STA. 5026+00.00 TO STA. 5027+00.00	CONTRACT NO. 68A42	ILLINOIS FED. AID PROJECT