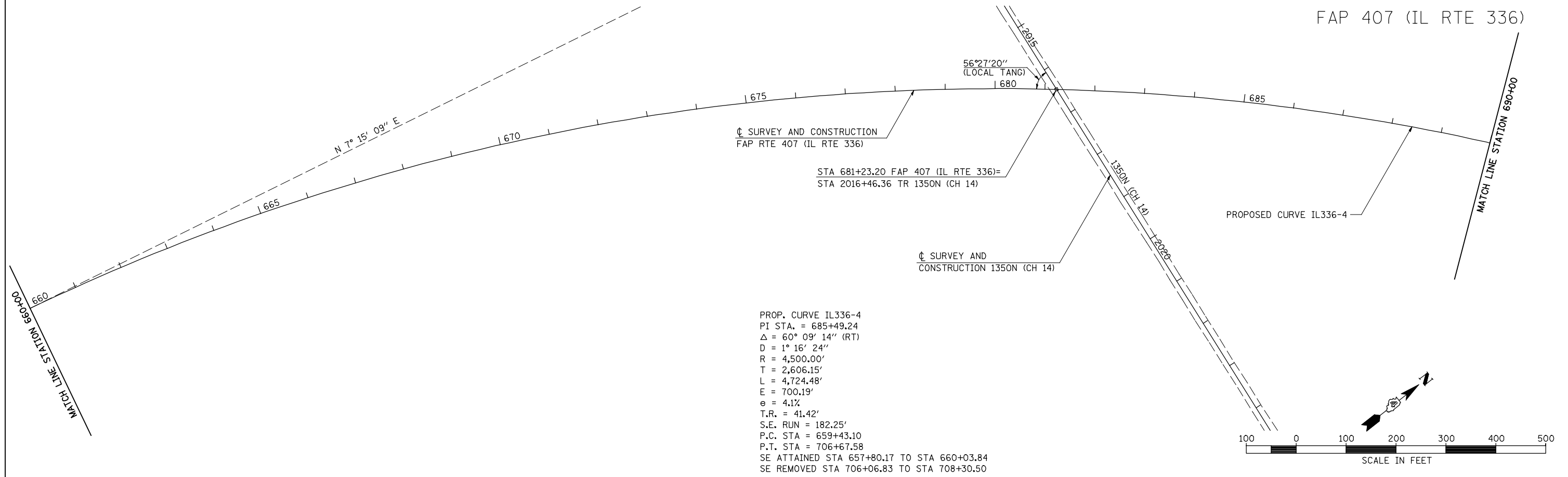


FAP 407 (IL RTE 336)

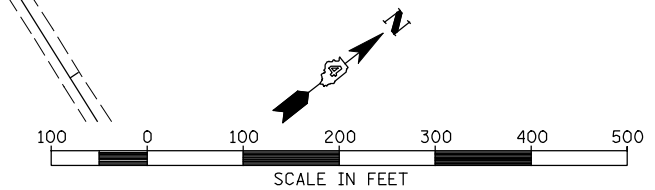


☐ SURVEY AND CONSTRUCTION
FAP RTE 407 (IL RTE 336)

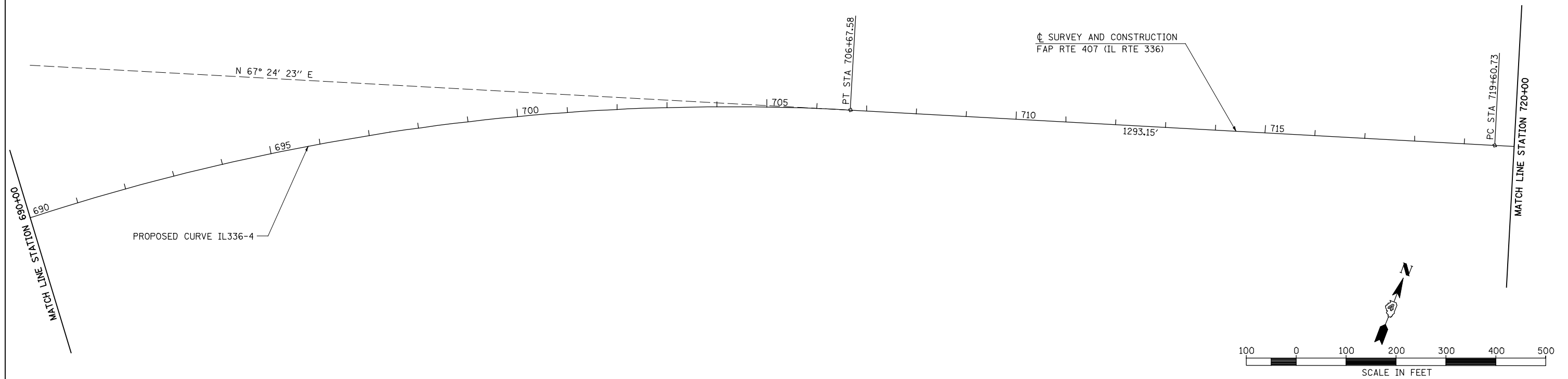
STA 681+23.20 FAP 407 (IL RTE 336)=
STA 2016+46.36 TR 1350N (CH 14)

☐ SURVEY AND CONSTRUCTION
1350N (CH 14)

PROP. CURVE IL336-4
 PI STA. = 685+49.24
 Δ = 60° 09' 14" (RT)
 D = 1° 16' 24"
 R = 4,500.00'
 T = 2,606.15'
 L = 4,724.48'
 E = 700.19'
 θ = 4.1%
 T.R. = 41.42'
 S.E. RUN = 182.25'
 P.C. STA = 659+43.10
 P.T. STA = 706+67.58
 SE ATTAINED STA 657+80.17 TO STA 660+03.84
 SE REMOVED STA 706+06.83 TO STA 708+30.50



FAP 407 (IL RTE 336)

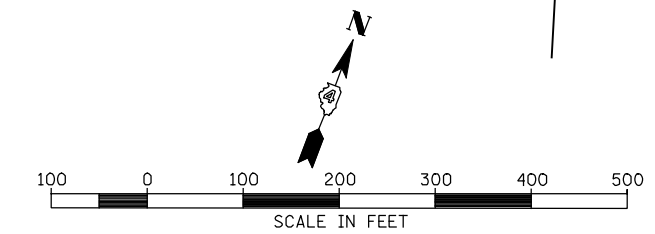


☐ SURVEY AND CONSTRUCTION
FAP RTE 407 (IL RTE 336)

P.T. STA 706+67.58

P.C. STA 719+60.73

PROPOSED CURVE IL336-4



FILE NAME = W:\Transportation\2891\Grading Plans\2891A05.dgn	USER NAME = jdeen	DESIGNED - JRB	REVISED -
		DRAWN - RLR	REVISED -
		CHECKED - AWM	REVISED -
		DATE - 12-12-12	REVISED -

**STATE OF ILLINOIS
DEPARTMENT OF TRANSPORTATION**

**FAP 407 (IL RTE 336)
ALIGNMENT LAYOUT - STATION 660+00 TO STATION 720+00**

SCALE: 1"=100' SHEET NO. 5 OF 14 SHEETS STA. 660+00 TO STA. 720+00

F.A.P. RTE.	SECTION	COUNTY	TOTAL SHEETS	SHEET NO.
407	(55-3)A	McDONOUGH	671	50
			CONTRACT NO. 68A42	
ILLINOIS FED. AID PROJECT				