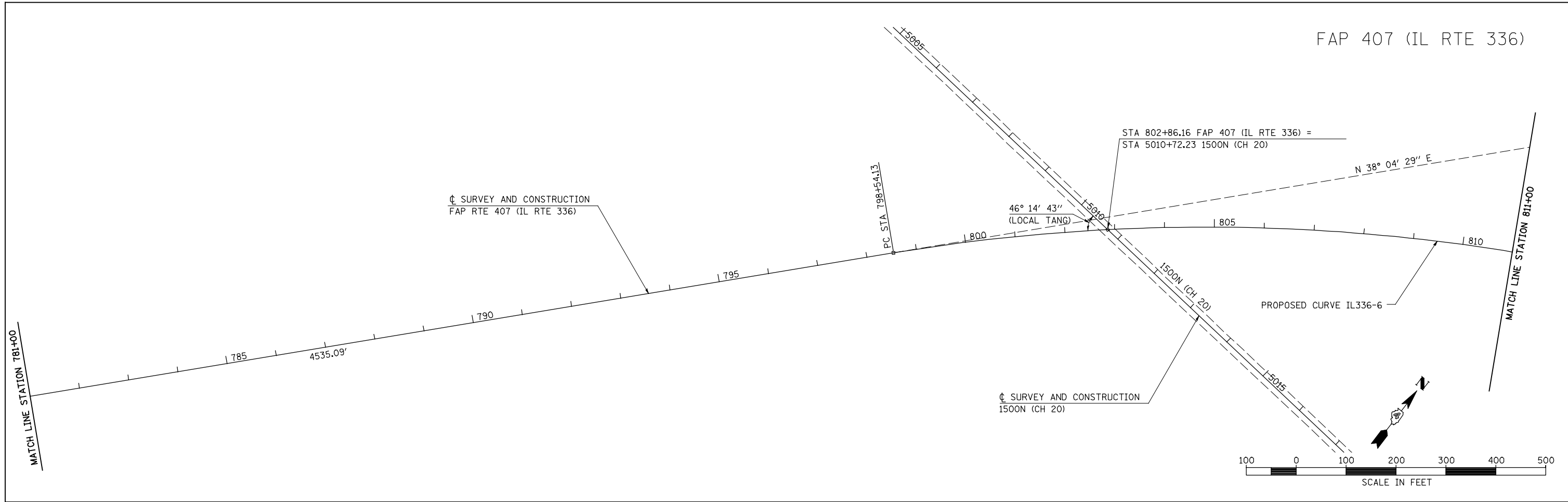
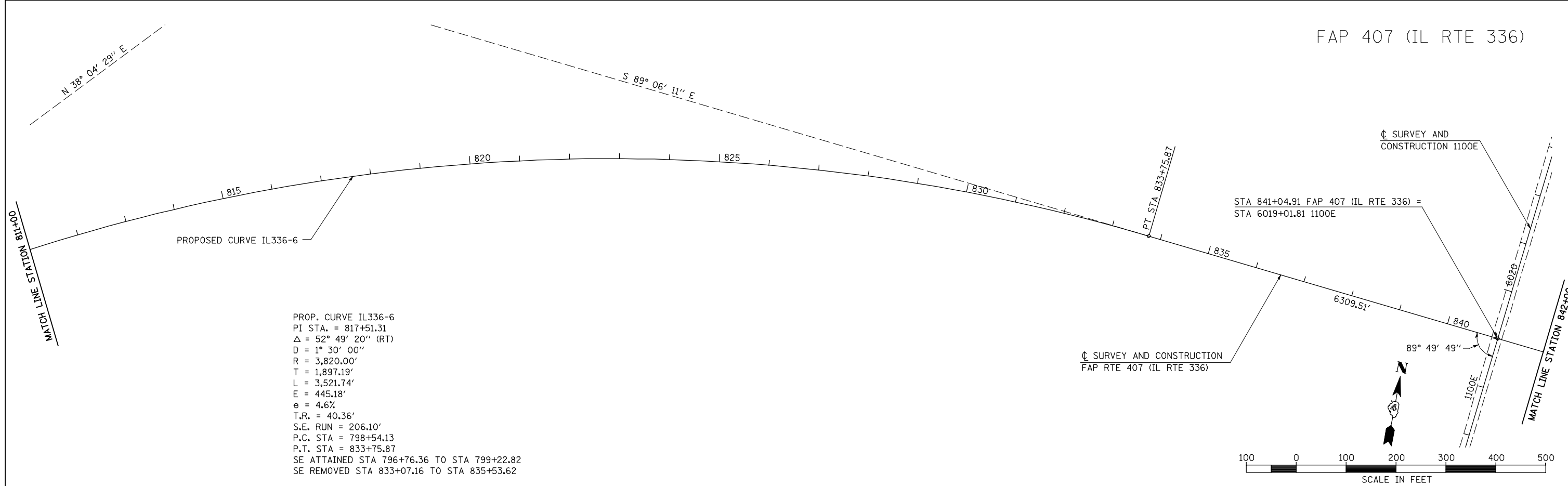


FAP 407 (IL RTE 336)



FAP 407 (IL RTE 336)



PROP. CURVE IL336-6
 PI STA. = 817+51.31
 Δ = 52° 49' 20" (RT)
 D = 1° 30' 00"
 R = 3,820.00'
 T = 1,897.19'
 L = 3,521.74'
 E = 445.18'
 e = 4.6%
 T.R. = 40.36'
 S.E. RUN = 206.10'
 P.C. STA = 798+54.13
 P.T. STA = 833+75.87
 SE ATTAINED STA 796+76.36 TO STA 799+22.82
 SE REMOVED STA 833+07.16 TO STA 835+53.62

FILE NAME =	USER NAME = jdeen	DESIGNED - JRB	REVISED -
W:\Transportation\2891\Grading Plans\2891A07.dgn		DRAWN - RLR	REVISED -
PLOT SCALE = 200.00' / IN.		CHECKED - AWM	REVISED -
PLOT DATE = 12/12/2012		DATE - 12-12-12	REVISED -

STATE OF ILLINOIS
 DEPARTMENT OF TRANSPORTATION

FAP 407 (IL RTE 336)
 ALIGNMENT LAYOUT - STATION 781+00 TO STATION 842+00
 SCALE: 1"=100' SHEET NO. 7 OF 14 SHEETS STA. 781+00 TO STA. 842+00

F.A.P. RTE.	SECTION	COUNTY	TOTAL SHEETS	SHEET NO.
407	(55-3)A	McDONOUGH	671	52
			CONTRACT NO. 68A42	
ILLINOIS FED. AID PROJECT				