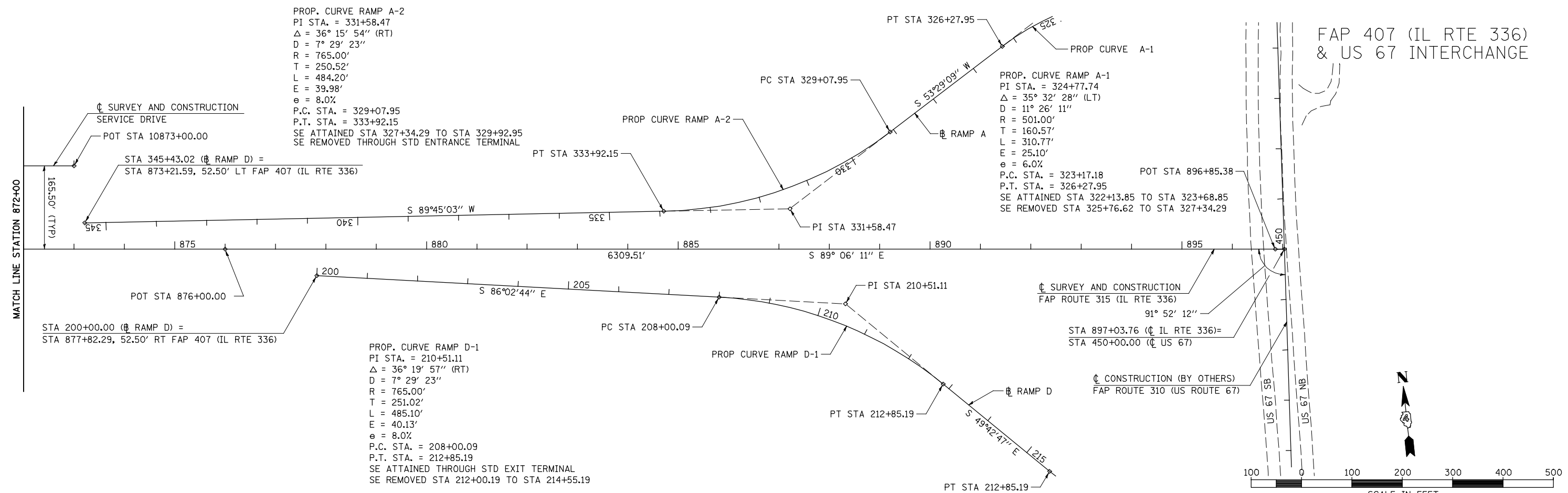
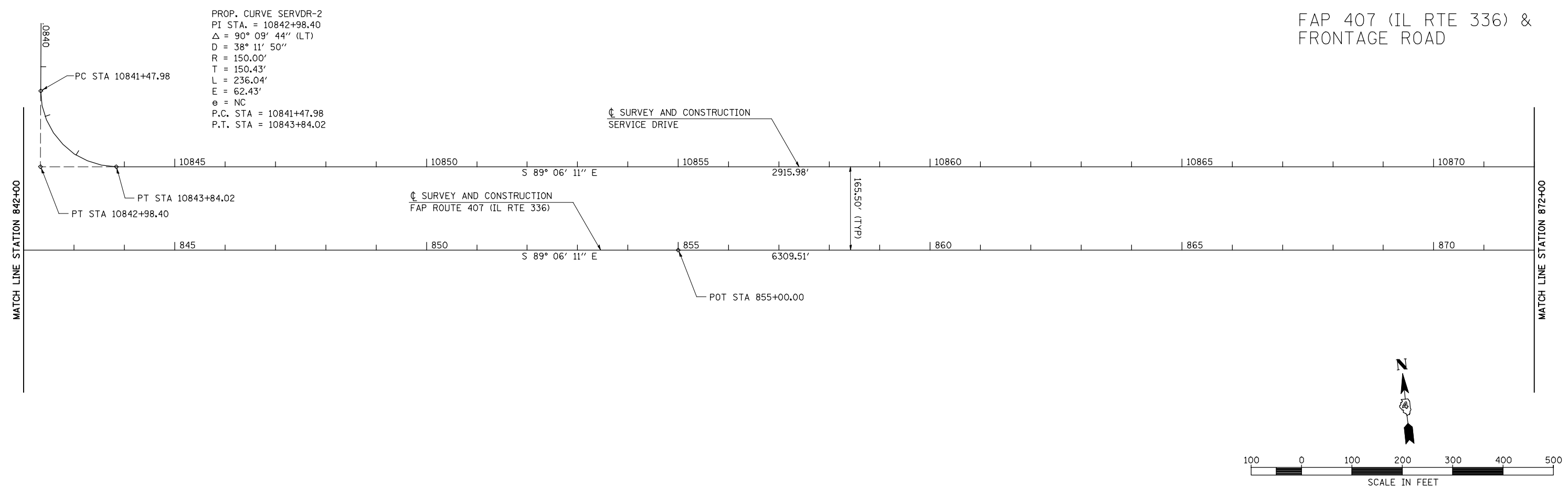


FAP 407 (IL RTE 336) & FRONTAGE ROAD



FILE NAME =	USER NAME = jdeen	DESIGNED - JRB	REVISED -	STATE OF ILLINOIS DEPARTMENT OF TRANSPORTATION	FAP 407 (IL RTE 336) ALIGNMENT LAYOUT - STATION 842+00 TO STATION 897+03.76			F.A.P. RTE. 407	SECTION (55-31A)	COUNTY McDONOUGH	TOTAL SHEETS 671	SHEET NO. 53
W:\Transportation\2891\Grading Plans\2891A08.dgn		DRAWN - RLR	REVISED -		SCALE: 1"=100'	SHEET NO. 8 OF 14 SHEETS	STA. 842+00	TO STA. 897+03.76	CONTRACT NO. 68A42			
PLOT SCALE = 200.00' / IN.		CHECKED - AWM	REVISED -		ILLINOIS FED. AID PROJECT							
PLOT DATE = 12/12/2012		DATE - 12-12-12	REVISED -									