

US 67 INTERCHANGE

PROP. CURVE US 67-2
 PI STA. = 458+23.46
 $\Delta = 2^\circ 18' 31''$ (RT)
 $D = 0^\circ 24' 23''$
 $R = 14,100.00'$
 $T = 284.10'$
 $L = 568.12'$
 $E = 2.86'$
 $e = NC$
 P.C. STA. = 455+39.36
 P.T. STA. = 461+07.48

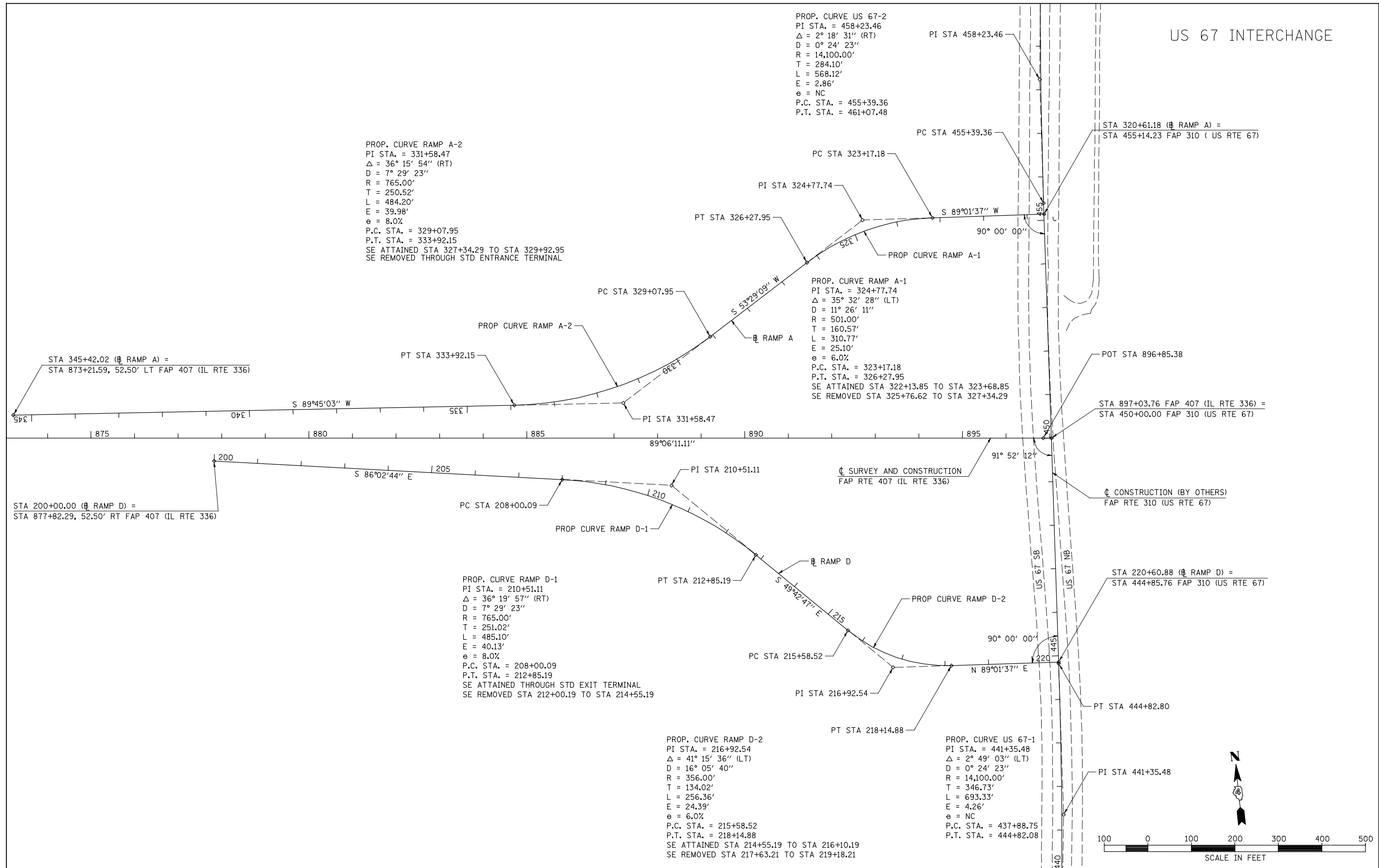
PROP. CURVE RAMP A-2
 PI STA. = 331+58.47
 $\Delta = 36^\circ 15' 54''$ (RT)
 $D = 7^\circ 29' 23''$
 $R = 765.00'$
 $T = 250.52'$
 $L = 484.20'$
 $E = 39.98'$
 $e = 8.0\%$
 P.C. STA. = 329+07.95
 P.T. STA. = 333+92.15
 SE ATTAINED STA 327+34.29 TO STA 329+92.95
 SE REMOVED THROUGH STD ENTRANCE TERMINAL

PROP. CURVE RAMP A-1
 PI STA. = 324+77.74
 $\Delta = 35^\circ 32' 28''$ (LT)
 $D = 11^\circ 26' 11''$
 $R = 501.00'$
 $T = 160.57'$
 $L = 310.77'$
 $E = 25.10'$
 $e = 6.0\%$
 P.C. STA. = 323+17.18
 P.T. STA. = 326+27.95
 SE ATTAINED STA 322+13.85 TO STA 323+68.85
 SE REMOVED STA 325+76.62 TO STA 327+34.29

PROP. CURVE RAMP D-1
 PI STA. = 210+51.11
 $\Delta = 36^\circ 19' 57''$ (RT)
 $D = 7^\circ 29' 23''$
 $R = 765.00'$
 $T = 251.02'$
 $L = 485.10'$
 $E = 40.13'$
 $e = 8.0\%$
 P.C. STA. = 208+00.09
 P.T. STA. = 212+85.19
 SE ATTAINED THROUGH STD EXIT TERMINAL
 SE REMOVED STA 212+00.19 TO STA 214+55.19

PROP. CURVE RAMP D-2
 PI STA. = 216+92.54
 $\Delta = 41^\circ 15' 36''$ (LT)
 $D = 16^\circ 05' 40''$
 $R = 356.00'$
 $T = 134.02'$
 $L = 256.36'$
 $E = 24.39'$
 $e = 6.0\%$
 P.C. STA. = 215+58.52
 P.T. STA. = 218+14.88
 SE ATTAINED STA 214+55.19 TO STA 216+10.19
 SE REMOVED STA 217+63.21 TO STA 219+18.21

PROP. CURVE US 67-1
 PI STA. = 441+35.48
 $\Delta = 2^\circ 49' 03''$ (LT)
 $D = 0^\circ 24' 23''$
 $R = 14,100.00'$
 $T = 346.73'$
 $L = 693.33'$
 $E = 4.26'$
 $e = NC$
 P.C. STA. = 437+88.75
 P.T. STA. = 444+82.08



FILE NAME =	USER NAME = jdeen	DESIGNED - JRB	REVISED -
W:\Transportation\2891\Grading Plans\2891A09.dgn		DRAWN - RLR	REVISED -
PLOT SCALE = 200.00' / IN.		CHECKED - JRB	REVISED -
PLOT DATE = 12/12/2012		DATE - 12-12-12	REVISED -

**STATE OF ILLINOIS
 DEPARTMENT OF TRANSPORTATION**

**FAP 407 (IL RTE 336)
 ALIGNMENT LAYOUT - FAP 310 (US RTE 67) INTERCHANGE**

SCALE: 1"=100' SHEET NO. 9 OF 14 SHEETS STA. TO STA.

F.A.P. RTE. 407	SECTION (55-3)A	COUNTY McDONOUGH	TOTAL SHEETS 671	SHEET NO. 54
CONTRACT NO. 68A42				
ILLINOIS FED. AID PROJECT				