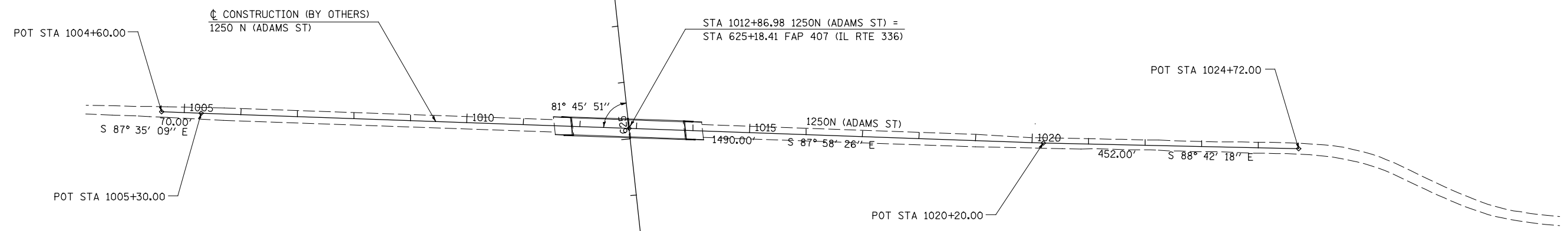
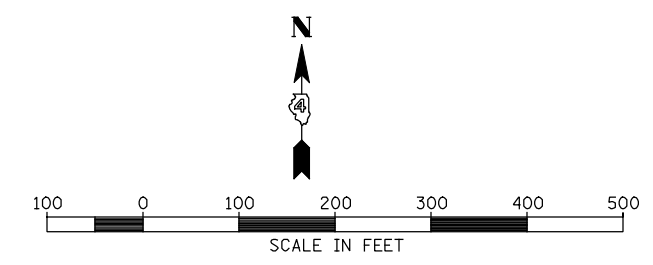


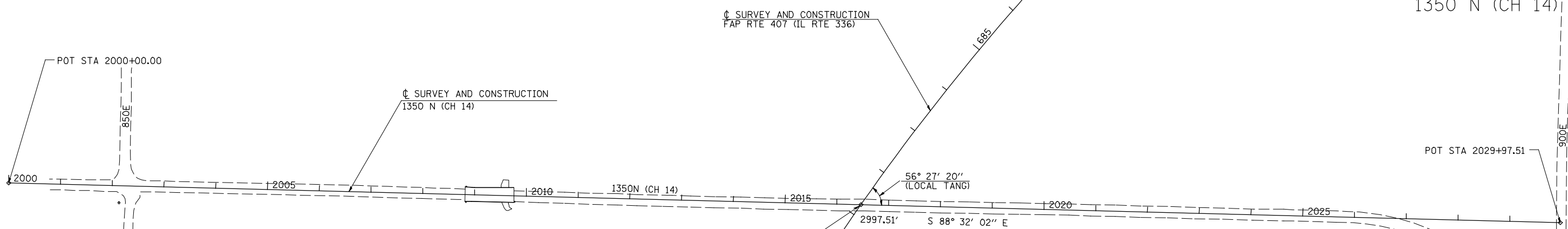
1250N (ADAMS STREET)



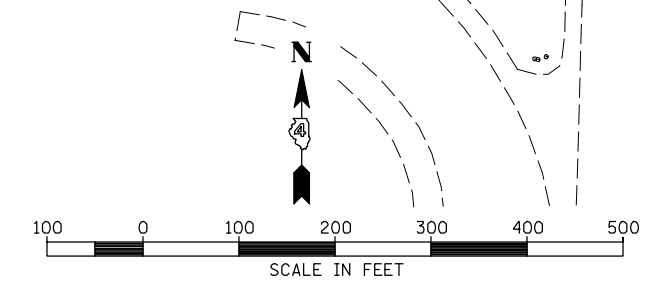
CL SURVEY AND CONSTRUCTION
FAP RTE 407 (IL RTE 336)



1350 N (CH 14)



STA 2016+46.36 1350N (CH 14) =
STA 681+23.20 FAP 407 (IL RTE 336)



FILE NAME =	USER NAME = jdeen	DESIGNED - JRB	REVISED -
W:\Transportation\2891\Grading Plans\2891A11.dgn		DRAWN - RLR	REVISED -
PLOT SCALE = 200.00' / IN.		CHECKED - AWM	REVISED -
PLOT DATE = 12/12/2012		DATE - 12-12-12	REVISED -

**STATE OF ILLINOIS
DEPARTMENT OF TRANSPORTATION**

**FAP 407 (IL RTE 336)
ALIGNMENT LAYOUT - 1250N (ADAMS ST) & 1500N (CH 14)**

SCALE: 1"=100' SHEET NO. 10 OF 14 SHEETS STA. TO STA.

F.A.P. RTE.	SECTION	COUNTY	TOTAL SHEETS	SHEET NO.
407	(55-3)A	McDONOUGH	671	55
			CONTRACT NO. 68A42	
ILLINOIS FED. AID PROJECT				