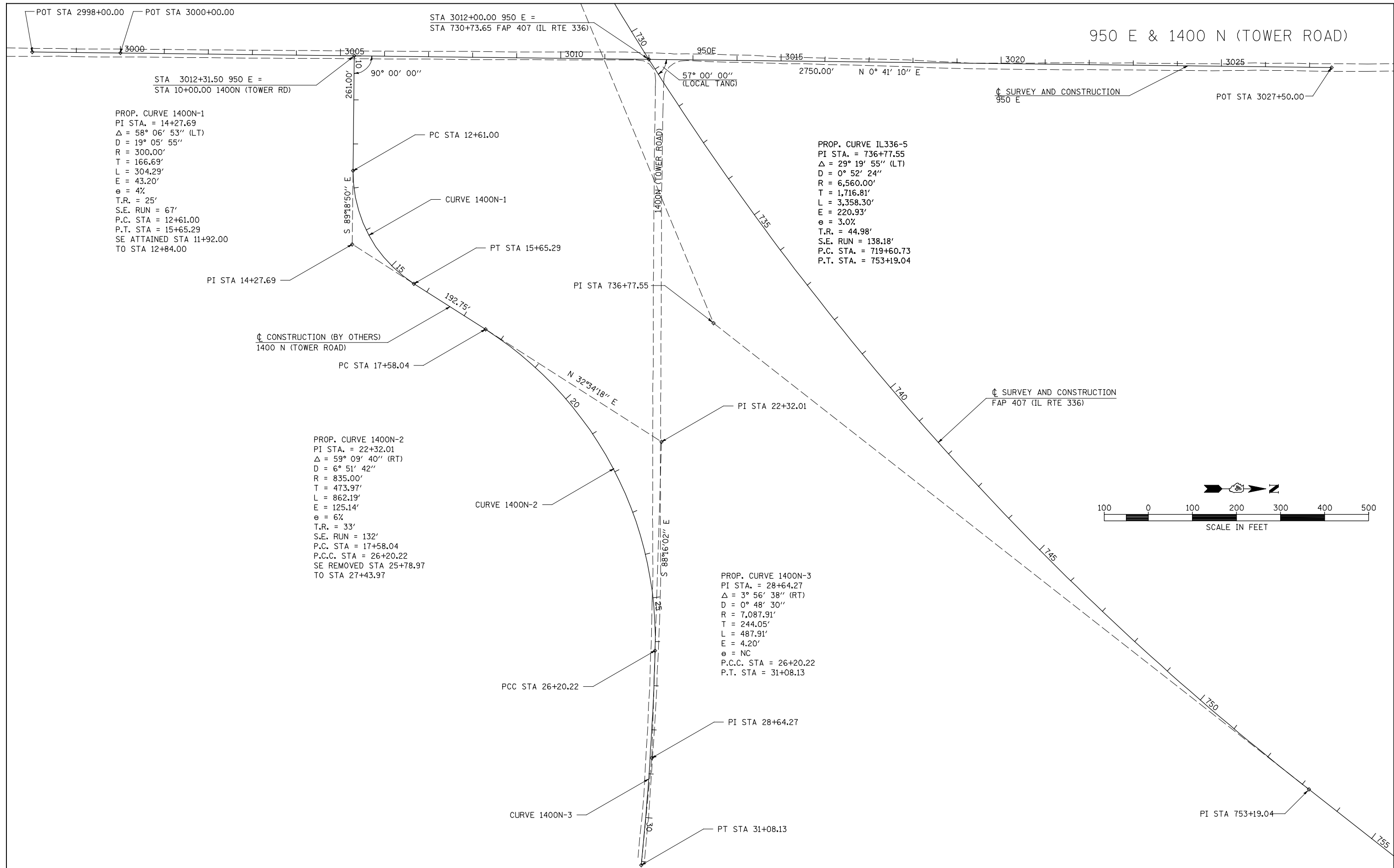


950 E & 1400 N (TOWER ROAD)

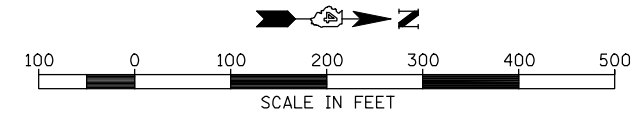


PROP. CURVE 1400N-1  
 PI STA. = 14+27.69  
 $\Delta = 58^\circ 06' 53''$  (LT)  
 D =  $19^\circ 05' 55''$   
 R = 300.00'  
 T = 166.69'  
 L = 304.29'  
 E = 43.20'  
 e = 4%  
 T.R. = 25'  
 S.E. RUN = 67'  
 P.C. STA = 12+61.00  
 P.T. STA = 15+65.29  
 SE ATTAINED STA 11+92.00  
 TO STA 12+84.00

PROP. CURVE IL336-5  
 PI STA. = 736+77.55  
 $\Delta = 29^\circ 19' 55''$  (LT)  
 D =  $0^\circ 52' 24''$   
 R = 6,560.00'  
 T = 1,716.81'  
 L = 3,358.30'  
 E = 220.93'  
 e = 3.0%  
 T.R. = 44.98'  
 S.E. RUN = 138.18'  
 P.C. STA. = 719+60.73  
 P.T. STA. = 753+19.04

PROP. CURVE 1400N-2  
 PI STA. = 22+32.01  
 $\Delta = 59^\circ 09' 40''$  (RT)  
 D =  $6^\circ 51' 42''$   
 R = 835.00'  
 T = 473.97'  
 L = 862.19'  
 E = 125.14'  
 e = 6%  
 T.R. = 33'  
 S.E. RUN = 132'  
 P.C. STA = 17+58.04  
 P.C.C. STA = 26+20.22  
 SE REMOVED STA 25+78.97  
 TO STA 27+43.97

PROP. CURVE 1400N-3  
 PI STA. = 28+64.27  
 $\Delta = 3^\circ 56' 38''$  (RT)  
 D =  $0^\circ 48' 30''$   
 R = 7,087.91'  
 T = 244.05'  
 L = 487.91'  
 E = 4.20'  
 e = NC  
 P.C.C. STA = 26+20.22  
 P.T. STA = 31+08.13



FILE NAME =	USER NAME = jdeen	DESIGNED - JRB	REVISED -
W:\Transportation\2891\Grading Plans\2891A12.dgn		DRAWN - RLR	REVISED -
PLOT SCALE = 200.00' / IN.		CHECKED - AWM	REVISED -
PLOT DATE = 12/12/2012		DATE - 12-12-12	REVISED -

**STATE OF ILLINOIS  
 DEPARTMENT OF TRANSPORTATION**

**FAP 315 (IL RTE 336)  
 ALIGNMENT LAYOUT - 950E & 1400N (TOWER RD)**  
 SCALE: 1"=100' SHEET NO. 11 OF 14 SHEETS STA. TO STA.

F.A.P. RTE.	SECTION	COUNTY	TOTAL SHEETS	SHEET NO.
407	(55-3)A	McDONOUGH	671	56
			CONTRACT NO. 68A42	
ILLINOIS FED. AID PROJECT				