

PROP. CURVE CH20-1
 PI STA. = 5045+71.38
 $\Delta = 3^\circ 27' 01''$ (RT)
 $D = 0^\circ 42' 33''$
 $R = 8,080.00'$
 $T = 243.36'$
 $L = 486.57'$
 $E = 3.66'$
 $e = NC$
 P.C. STA = 5043+28.02
 P.T. STA = 5048+14.59

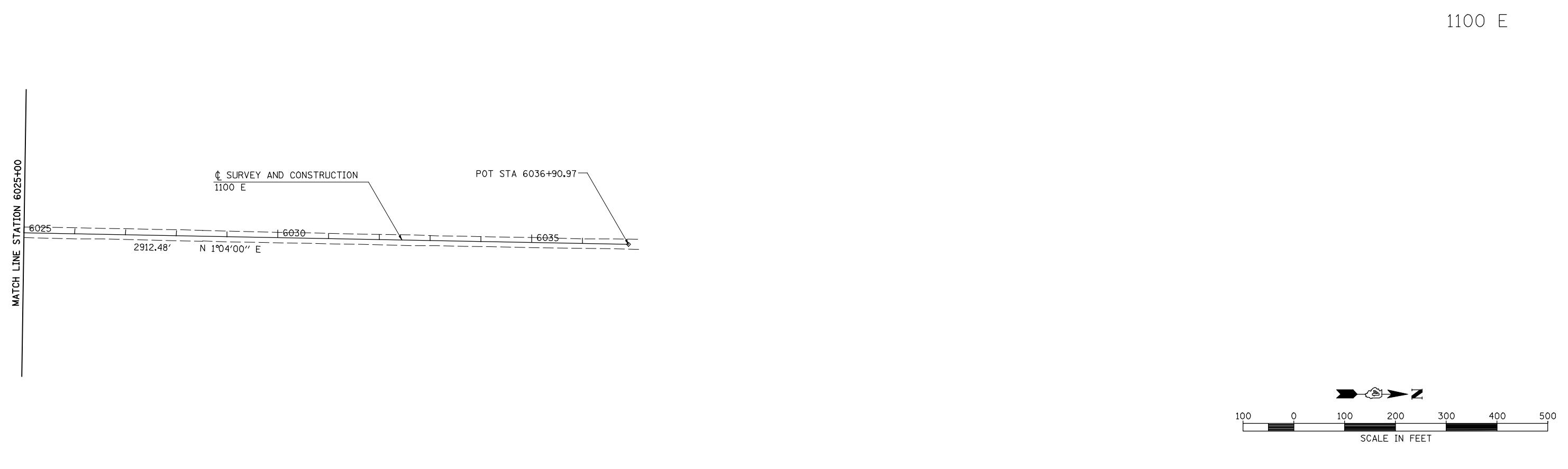
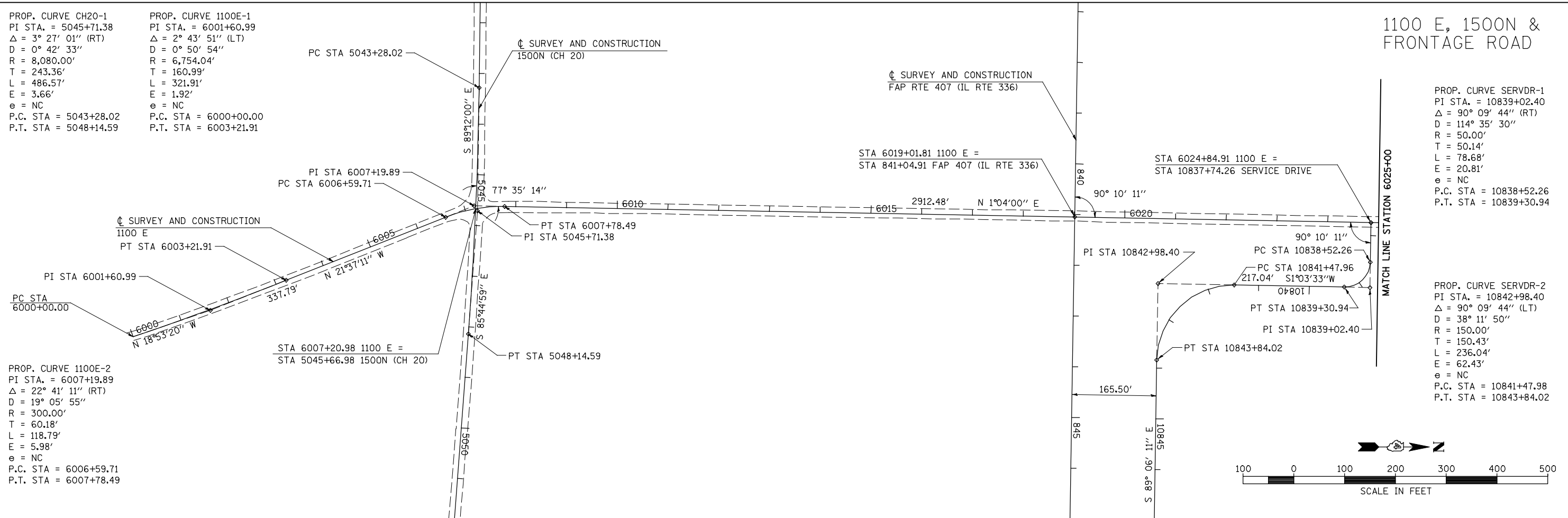
PROP. CURVE 1100E-1
 PI STA. = 6001+60.99
 $\Delta = 2^\circ 43' 51''$ (LT)
 $D = 0^\circ 50' 54''$
 $R = 6,754.04'$
 $T = 160.99'$
 $L = 321.91'$
 $E = 1.92'$
 $e = NC$
 P.C. STA = 6000+00.00
 P.T. STA = 6003+21.91

PROP. CURVE 1100E-2
 PI STA. = 6007+19.89
 $\Delta = 22^\circ 41' 11''$ (RT)
 $D = 19^\circ 05' 55''$
 $R = 300.00'$
 $T = 60.18'$
 $L = 118.79'$
 $E = 5.98'$
 $e = NC$
 P.C. STA = 6006+59.71
 P.T. STA = 6007+78.49

1100 E, 1500N & FRONTAGE ROAD

PROP. CURVE SERVDR-1
 PI STA. = 10839+02.40
 $\Delta = 90^\circ 09' 44''$ (RT)
 $D = 114^\circ 35' 30''$
 $R = 50.00'$
 $T = 50.14'$
 $L = 78.68'$
 $E = 20.81'$
 $e = NC$
 P.C. STA = 10838+52.26
 P.T. STA = 10839+30.94

PROP. CURVE SERVDR-2
 PI STA. = 10842+98.40
 $\Delta = 90^\circ 09' 44''$ (LT)
 $D = 38^\circ 11' 50''$
 $R = 150.00'$
 $T = 150.43'$
 $L = 236.04'$
 $E = 62.43'$
 $e = NC$
 P.C. STA = 10841+47.98
 P.T. STA = 10843+84.02



FILE NAME =	USER NAME = jdeen	DESIGNED - JRB	REVISED -
W:\Transportation\2891\Grading Plans\2891\AI3.dgn		DRAWN - RLR	REVISED -
	PLOT SCALE = 200.00' / IN.	CHECKED - AWM	REVISED -
	PLOT DATE = 12/12/2012	DATE - 12-12-12	REVISED -

STATE OF ILLINOIS
 DEPARTMENT OF TRANSPORTATION

FAP 407 (IL RTE 336)
 ALIGNMENT LAYOUT - 1100E, 1500N (CH 20) & SERVICE DRIVE

SCALE: 1"=100' SHEET NO. 12 OF 14 SHEETS STA. 6000+00 TO STA. 6036+90.97

F.A.P. RTE.	SECTION	COUNTY	TOTAL SHEETS	SHEET NO.
407	(55-3)A	McDONOUGH	671	57
			CONTRACT NO. 68A42	
ILLINOIS FED. AID PROJECT				