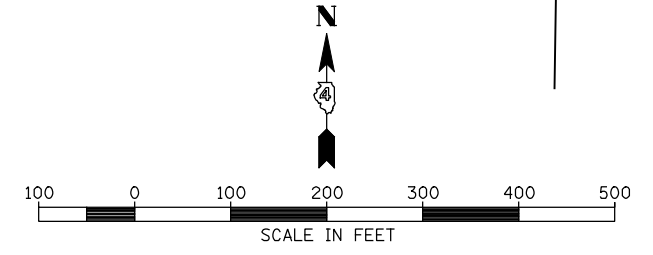
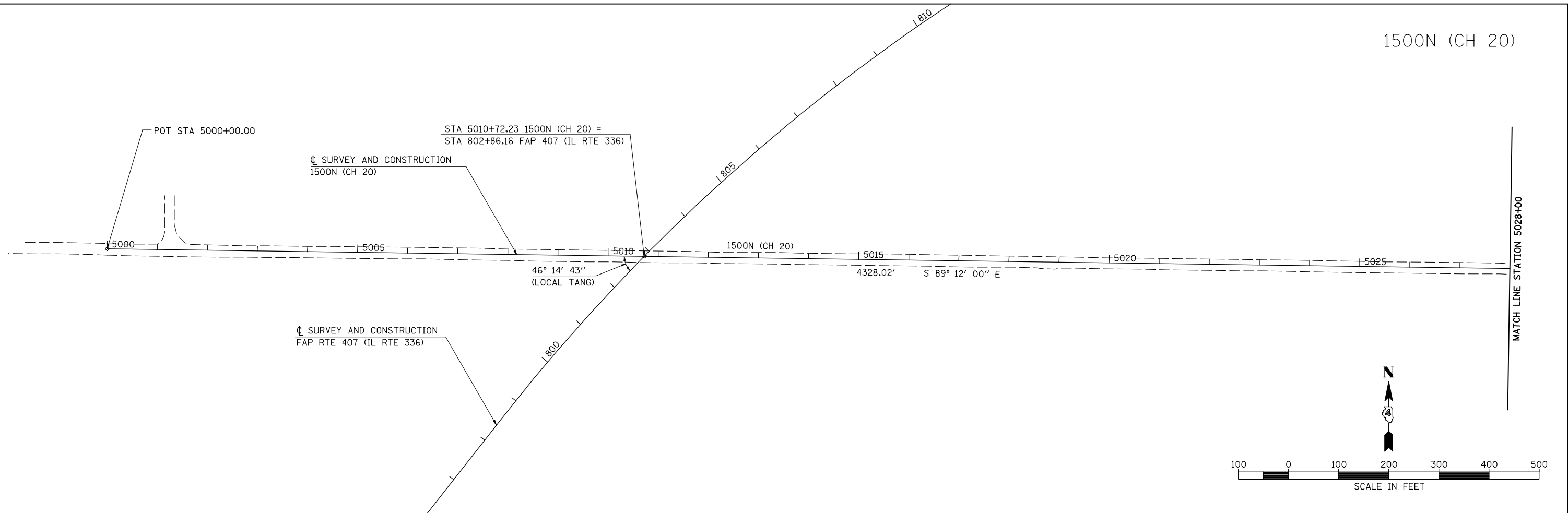
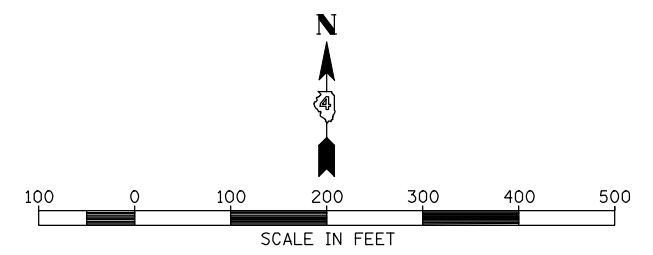
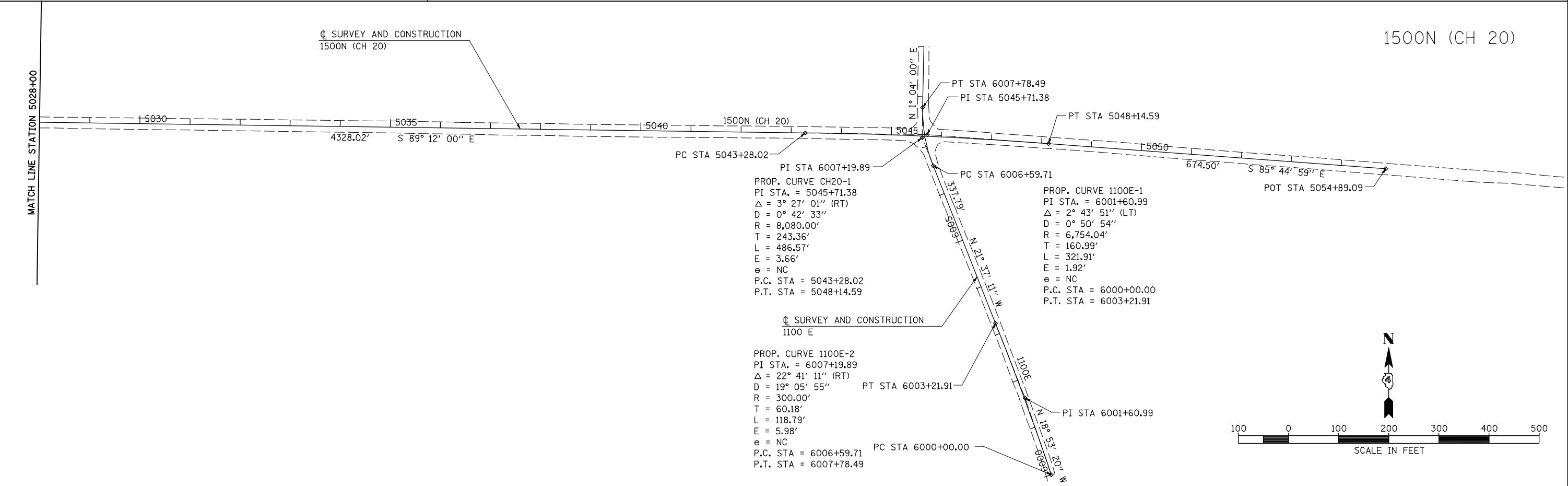


1500N (CH 20)



1500N (CH 20)



PROP. CURVE CH20-1  
 PI STA. = 5045+71.38  
 $\Delta = 3^\circ 27' 01''$  (RT)  
 $D = 0^\circ 42' 33''$   
 $R = 8,080.00'$   
 $T = 243.36'$   
 $L = 486.57'$   
 $E = 3.66'$   
 $e = NC$   
 P.C. STA = 5043+28.02  
 P.T. STA = 5048+14.59

PROP. CURVE 1100E-1  
 PI STA. = 6001+60.99  
 $\Delta = 2^\circ 43' 51''$  (LT)  
 $D = 0^\circ 50' 54''$   
 $R = 6,754.04'$   
 $T = 160.99'$   
 $L = 321.91'$   
 $E = 1.92'$   
 $e = NC$   
 P.C. STA = 6000+00.00  
 P.T. STA = 6003+21.91

PROP. CURVE 1100E-2  
 PI STA. = 6007+19.89  
 $\Delta = 22^\circ 41' 11''$  (RT)  
 $D = 19^\circ 05' 55''$   
 $R = 300.00'$   
 $T = 60.18'$   
 $L = 118.79'$   
 $E = 5.98'$   
 $e = NC$   
 P.C. STA = 6006+59.71  
 P.T. STA = 6007+78.49

FILE NAME =	USER NAME = jdeen	DESIGNED - JRB	REVISED -
W:\Transportation\2891\Grading Plans\2891A14.dgn		DRAWN - RLR	REVISED -
PLOT SCALE = 200.00' / IN.		CHECKED - AWM	REVISED -
PLOT DATE = 12/12/2012		DATE - 12-12-12	REVISED -

**STATE OF ILLINOIS  
 DEPARTMENT OF TRANSPORTATION**

**FAP 407 (IL RTE 336)  
 ALIGNMENT LAYOUT - 1500N (CH 20)**

SCALE: 1"=100'    SHEET NO. 13 OF 14 SHEETS    STA. 5000+00.00 TO STA. 5054+89.09

F.A.P. RTE.	SECTION	COUNTY	TOTAL SHEETS	SHEET NO.
407	(55-3)A	McDONOUGH	671	58
			CONTRACT NO. 68A42	
ILLINOIS FED. AID PROJECT				