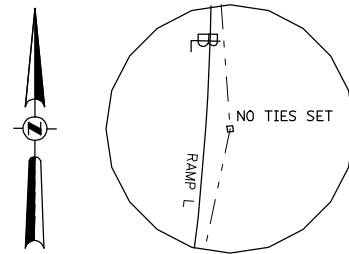
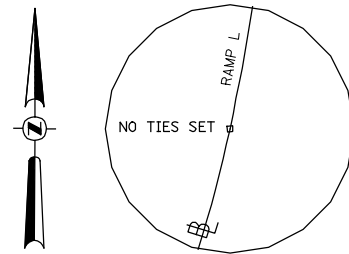


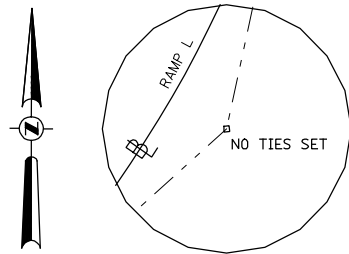
PC STA 57+98.51  
RAMP L  
5/8" I-ROD W/CAP  
N 1,376,976.8258  
E 2,137,674.9975



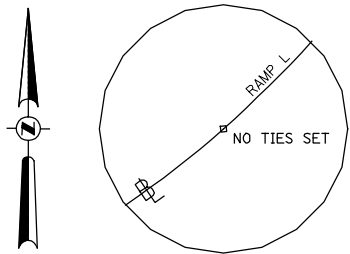
PI STA 59+06.27  
RAMP L  
5/8" I-ROD W/CAP  
N 1,376,869.3473  
E 2,137,682.8693



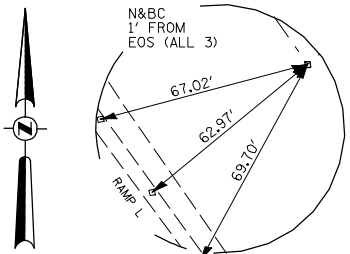
PCC STA 60+12.61  
RAMP L  
5/8" I-ROD W/CAP  
N 1,376,763.9172  
E 2,137,660.5512



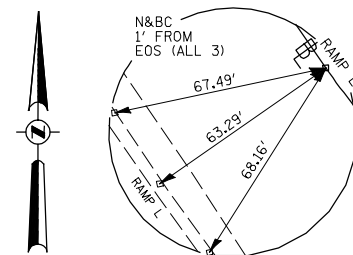
PI STA 61+36.93  
RAMP L  
5/8" I-ROD W/CAP  
N 1,376,642.2890  
E 2,137,634.8041



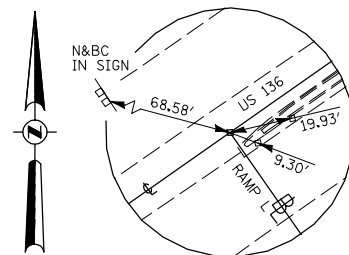
PCC STA 62+52.92  
RAMP L  
5/8" I-ROD W/CAP  
N 1,376,559.4035  
E 2,137,542.1416



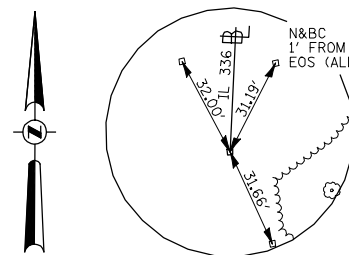
PI STA 65+68.02  
RAMP L  
5/8" I-ROD W/CAP  
N 1,376,349.3270  
E 2,137,307.2849



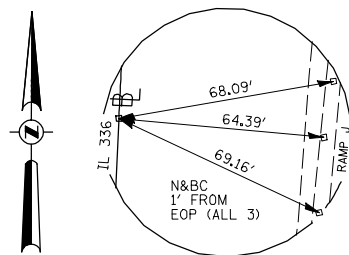
PT STA 67+25.73  
RAMP L  
5/8" I-ROD W/CAP  
N 1,376,607.2505  
E 2,137,126.2731



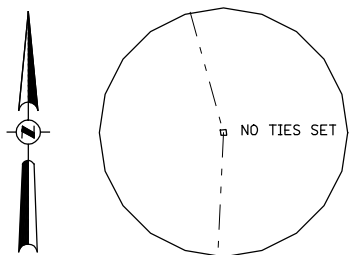
POT STA 73+64.64  
RAMP L  
SURVEY SPIKE  
N 1,377,130.2998  
E 2,136,759.1952



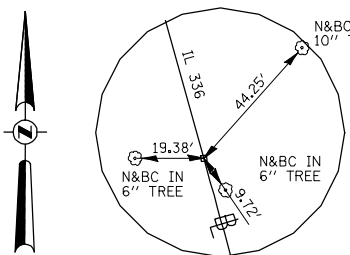
POT STA 504+38.45  
FAP 407 (IL RTE 336)  
BRASS DISK  
N 1,371,277.2256  
E 2,137,584.2219



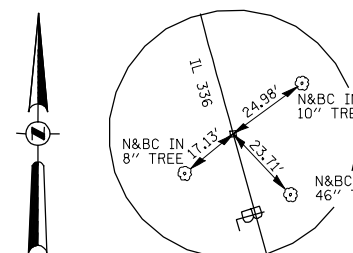
PC STA 549+51.23  
FAP 407 (IL RTE 336)  
5/8" I-ROD W/CAP  
N 1,375,784.7210  
E 2,137,802.4941



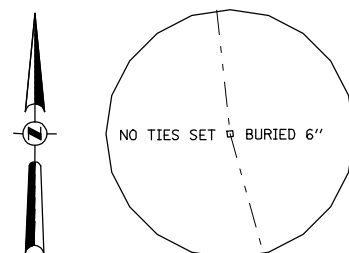
PI STA 561+78.59  
FAP 407 (IL RTE 336)  
5/8" I-ROD W/CAP  
N 1,377,010.6433  
E 2,137,861.8585



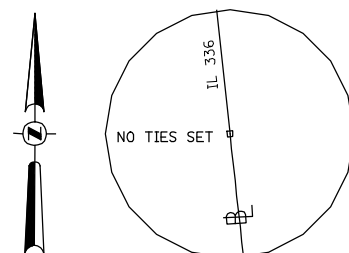
PT STA 573+85.18  
FAP 407 (IL RTE 336)  
5/8" I-ROD W/CAP  
N 1,378,193.5410  
E 2,137,534.5013



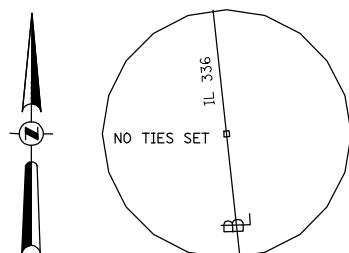
PC STA 578+67.56  
FAP 407 (IL RTE 336)  
5/8" I-ROD W/CAP  
N 1,378,658.4519  
E 2,137,405.8410



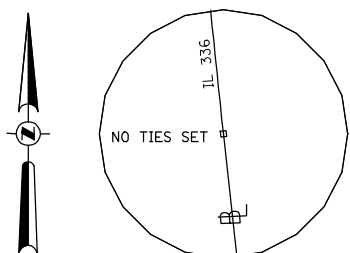
PI STA 590+36.90  
FAP 407 (IL RTE 336)  
5/8" I-ROD W/CAP  
N 1,379,785.4337  
E 2,137,093.9581



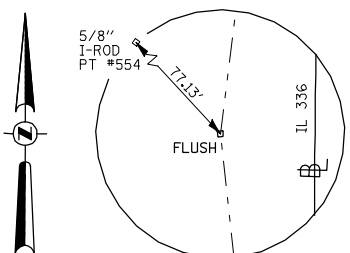
PT STA 602+01.15  
FAP 407 (IL RTE 336)  
5/8" I-ROD W/CAP  
N 1,380,947.9141  
E 2,136,967.4742



POT STA 619+50.00  
FAP 407 (IL RTE 336)  
5/8" I-ROD W/CAP  
N 1,382,686.5021  
E 2,136,778.3069



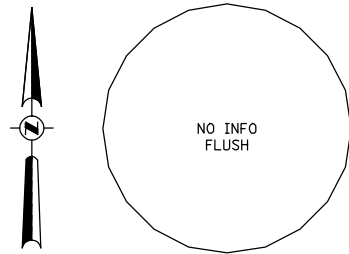
PC STA 637+01.55  
FAP 407 (IL RTE 336)  
5/8" I-ROD W/CAP  
N 1,384,427.7770  
E 2,136,588.8472



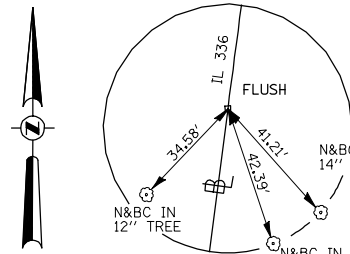
PI STA 642+04.92  
FAP 407 (IL RTE 336)  
5/8" I-ROD W/CAP  
N 1,384,928.1921  
E 2,136,534.3995

BENCHMARKS

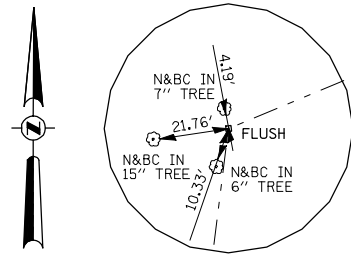
| BM #      | ELEVATION | LOCATION                       | OFFSET    | DESCRIPTION   |
|-----------|-----------|--------------------------------|-----------|---|
| BM HEI 12 | 662.55    | ADAMS ST (1250N) STA ± 1020+53 | 28' RT    | R.R. SPIKE IN P.P. S. SIDE OF 1250N RD, W. SIDE OF DRV. HO. #8781                                       |
| BM HEI 14 | 693.68    | ADAMS ST (1250N) STA ± 1005+48 | 30' LT    | R.R. SPIKE IN P.P. N. SIDE OF 1250N RD, ±50' W. OF DRV. TO RESIDENCE LABELLED "BLACK" ON M.B.           |
| BM HEI 27 | 586.73    | IL RTE 336 STA ± 579+15        | ± 35' LT  | R.R. SPIKE IN ±12" OAK TREE S. SIDE OF E. LAMOINE RIVER, S. SIDE OF GRASS FIELD, ±30' E. OF END OF PATH |
| BM HEI 28 | 580.91    | IL RTE 336 STA ± 582+90        | ± 50' LT  | R.R. SPIKE IN ±26" MAPLE TREE, S. SIDE OF E. LAMOINE RIVER  |
| BM HEI 29 | 696.64    | IL RTE 336 STA ± 701+00        | ± 23' LT  | R.R. SPIKE ON N.E. SIDE OF ±34" LOCUST TREE   |
| BM HEI 32 | 579.11    | IL RTE 336 STA ± 585+00        | ± 35' RT  | R.R. SPIKE IN ±30" MAPLE TREE, N. SIDE OF E. LAMOINE RIVER  |
| BM HEI 33 | 602.33    | IL RTE 336 STA ± 598+00        | ± 45' RT  | R.R. SPIKE IN ±18" TREE, ±1/4 MI. N. OF E. LAMOINE RIVER, E. SIDE OF FIELD ENT.                         |
| BM HEI 34 | 689.78    | IL RTE 336 STA ± 632+75        | ± 60' LT  | R.R. SPIKE ON E. SIDE OF 24" OAK, ±725' N. OF 1250N RD @ HO. #8630                                      |
| BM HEI 35 | 695.54    | IL RTE 336 STA ± 643+00        | ± 300' RT | CHIS. "D" ON TOP OF N.E. COR. CONC. PATIO/BOAT HOUSE, N. SIDE OF LAKE, E. OF STA 643+00, ±300' RT       |
| BM W-15   | 700.20    | CH 14 (900E)                   | 348' LT   | 60d NAIL IN E. FACE OF P.P. S.W. QUAD. OF 1350N & 900E ROADS  |
| BM HEI 36 | 645.79    | CH 14 (1350 N) STA ± 2020+31   | ± 38' RT  | R.R. SPIKE IN P.P. 35' E. OF BOX CULVERT  |
| BM HEI 37 | 619.41    | CH 14 (1350 N) STA ± 2009+76   | ± 12' RT  | CHIS. "D" ON S.E. HDWL OF BRIDGE  |



PT STA 647+03.65  
FAP 407 (IL RTE 336)  
5/8" I-ROD W/CAP  
N 1,385,427.5333  
E 2,136,597.9461



PC STA 659+43.10  
FAP 407 (IL RTE 336)  
5/8" I-ROD W/CAP  
N 1,386,657.0607  
E 2,136,754.4168



PI STA 685+49.24  
FAP 407 (IL RTE 336)  
5/8" I-ROD W/CAP  
N 1,389,242.3557  
E 2,137,083.4237

|  |                   |                |           |
|--|-------------------|----------------|-----------|
| FILE NAME =                                      | USER NAME = jdeen | DESIGNED - JRB | REVISED - |
| W:\Transportation\2891\Grading Plans\2891A17.dgn |                   | DRAWN - JW     | REVISED - |
|  |                   | CHECKED - AWM  | REVISED - |
|  |                   | DATE -         | REVISED - |

STATE OF ILLINOIS  
DEPARTMENT OF TRANSPORTATION

ALIGNMENT TIES AND BENCHMARKS  
FAP 407 (IL RTE 336)

SCALE: N/A SHEET NO. 2 OF 6 SHEETS STA. N/A TO STA. N/A

|                           |         |           |                    |           |
|---------------------------|---------|-----------|--------------------|-----------|
| F.A.P. RTE.               | SECTION | COUNTY    | TOTAL SHEETS       | SHEET NO. |
| 407                       | (55-3)A | McDONOUGH | 671                | 61        |
|                           |         |           | CONTRACT NO. 68A42 |           |
| ILLINOIS FED. AID PROJECT |         |           |                    |           |