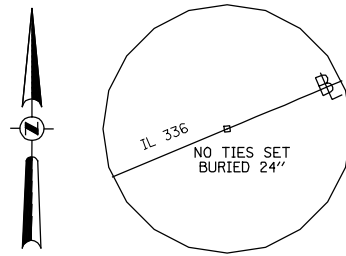
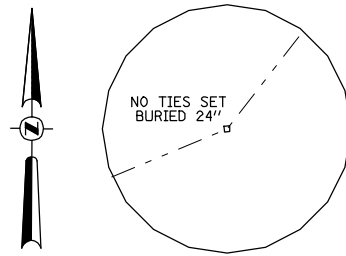


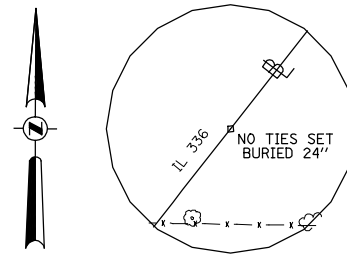
PT STA 706+67.58
FAP 407 (IL RTE 336)
5/8" I-ROD W/CAP
N 1,390,243.6114
E 2,139,489.5581



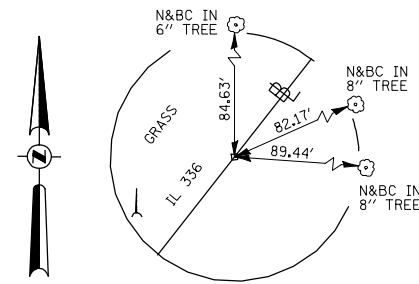
PC STA 719+60.73
FAP 407 (IL RTE 336)
5/8" I-ROD W/CAP
N 1,390,740.4281
E 2,140,683.4666



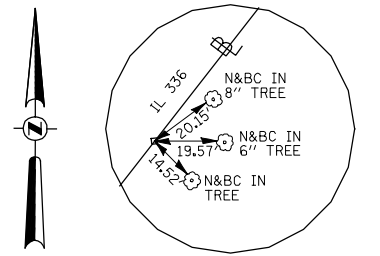
PI STA 736+77.55
FAP 407 (IL RTE 336)
5/8" I-ROD W/CAP
N 1,391,400.0105
E 2,142,268.5202



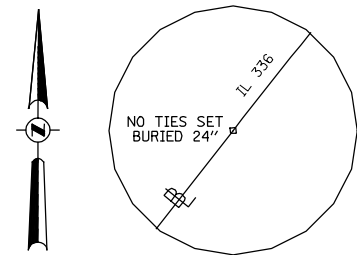
PT STA 753+19.04
FAP 407 (IL RTE 336)
5/8" I-ROD W/CAP
N 1,392,751.4975
E 2,143,327.2586



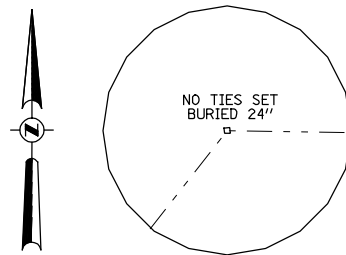
POT STA 766+00.00
FAP 407 (IL RTE 336)
FLUSH 5/8" I-ROD
N 1,393,759.8750
E 2,144,117.2060



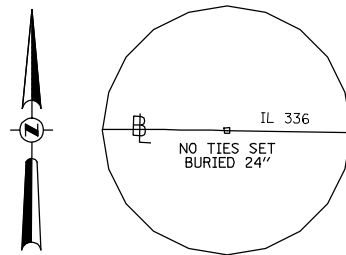
POT STA 778+50.00
FAP 407 (IL RTE 336)
FLUSH 5/8" I-ROD
N 1,394,743.8370
E 2,144,888.0300



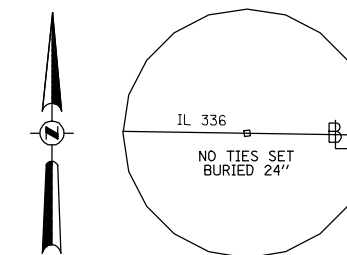
PC STA 798+54.13
FAP 407 (IL RTE 336)
5/8" I-ROD W/ CAP
N 1,396,321.5520
E 2,146,123.9954



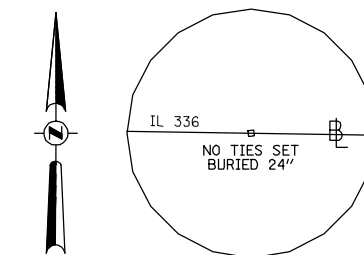
PI STA 817+51.31
FAP 407 (IL RTE 336)
5/8" I-ROD W/ CAP
N 1,397,815.0315
E 2,147,293.9689



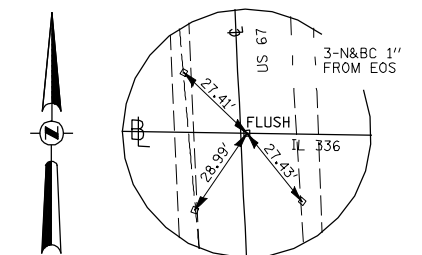
PT STA 833+75.87
FAP 407 (IL RTE 336)
5/8" I-ROD W/ CAP
N 1,397,785.3339
E 2,149,190.9235



POT STA 855+00.00
FAP 407 (IL RTE 336)
5/8" I-ROD W/ CAP
N 1,397,749.2880
E 2,151,310.4950



POT STA 876+00.00
FAP 407 (IL RTE 336)
5/8" I-ROD W/ CAP
N 1,397,716.4160
E 2,153,410.2330



POT STA 896+85.38
FAP 407 (IL RTE 336)
5/8" I-ROD W/ CAP
N 1,397,686.5681
E 2,155,499.6621

BENCHMARKS

BM #	ELEVATION	LOCATION	OFFSET	DESCRIPTION
BM HEI 15	700.55	950E		R.R. SPIKE CY POLE E. SIDE OF EMORY RD, ±0.5 MI. S. OF 1400N RD, ±200' E. OF HO. *480
BM HEI 16	697.25	950E STA 3002+36	23' LT	R.R. SPIKE IN 3RD P.P. S. OF INT. OF EMORY RD & 1400N RD W. SIDE OF EMORY RD
BM HEI 17	710.93	950E STA 3012+00	27' LT	R.R. SPIKE IN P.P. @ S.W. QUAD. OF EMORY RD & 1400N RD
BM HEI 18	697.46	1400N		R.R. SPIKE IN 3RD P.P. E. OF INTERSECTION OF EMORY RD & 1400N RD S. SIDE OF 1400N RD
BM HEI 19	676.48	950E STA 3019+20	18' RT	CHIS. "D" TOP CENTER OF COR. HDWL, E. SIDE OF EMORY RD ±800' N. OF 1400N RD
BM HEI 20	712.45	1500N STA 5006+15	30' LT	R.R. SPIKE IN P.P., 3RD POLE E. OF SPRINGLAKE PARK RD, N. SIDE ON 1500N RD
BM HEI 30	714.76	IL RTE 336 779+90.13	239' LT	R.R. SPIKE IN 15" TREE
BM HEI 31	706.83	IL RTE 336 780+21.66	736' LT	RE-SET BM W-11 ON N.W. COR. OF DROP BOX OF SAME N. HDWL, X-RD CULV. @ HO. #1810 EMORY RD
BM W-17	621.59	1250N		POLE SPIKE IN N.E. SIDE OF P.P., ±50M W. OF INT. OF W. ADAMS (900E) & 1250N., N. SIDE OF 1250N.

FILE NAME =	USER NAME = jdeen	DESIGNED - JRB	REVISED -	STATE OF ILLINOIS DEPARTMENT OF TRANSPORTATION	ALIGNMENT TIES AND BENCHMARKS FAP 407 (IL RTE 336)			F.A.P. RTE. 407	SECTION (55-3)A	COUNTY McDONOUGH	TOTAL SHEETS 671	SHEET NO. 62
W:\Transportation\2891\Grading Plans\2891A17.dgn		DRAWN - JW	REVISED -		SCALE: N/A	SHEET NO. 3 OF 6 SHEETS	STA. N/A	TO STA. N/A	CONTRACT NO. 68A42			
		CHECKED - AWM	REVISED -		ILLINOIS FED. AID PROJECT							
		DATE -	REVISED -									