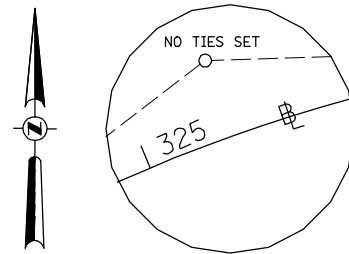
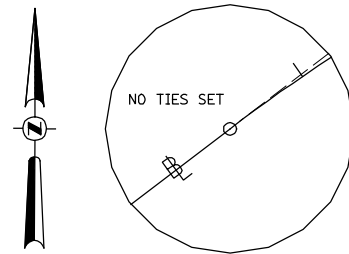


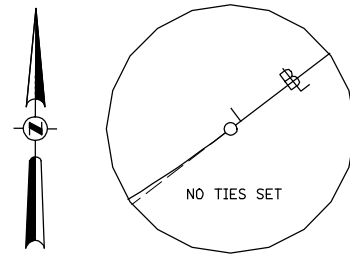
PC STA 323+17.18
RAMP A-1
SURVEY POINT
N 1,398,196.0893
E 2,155,253.3439



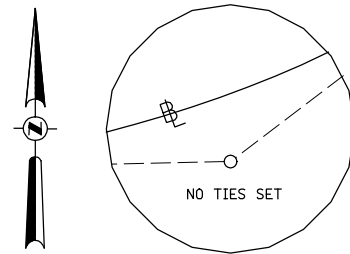
PI STA 324+77.74
RAMP A-1
SURVEY POINT
N 1,398,193.3624
E 2,155,092.7981



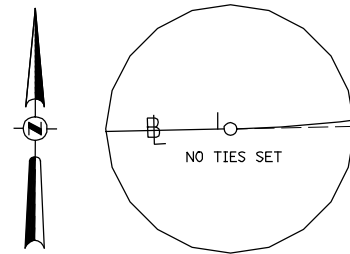
PT STA 326+27.95
RAMP A-1
SURVEY POINT
N 1,398,097.8207
E 2,154,963.7471



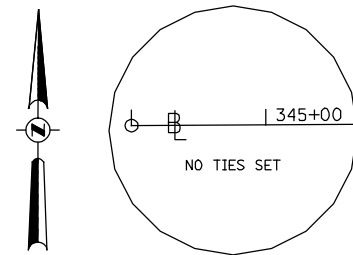
PC STA 329+07.95
RAMP A-2
SURVEY POINT
N 1,397,931.2151
E 2,154,738.7081



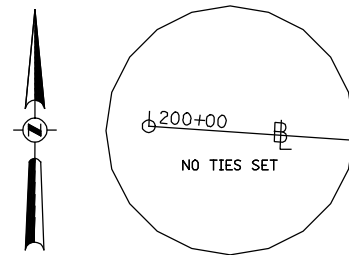
PI STA 331+58.47
RAMP A-2
SURVEY POINT
N 1,397,782.1501
E 2,154,537.3616



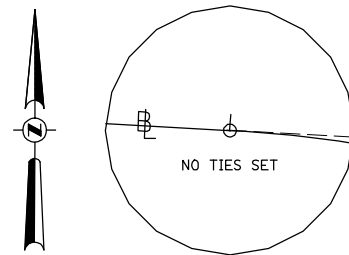
PT STA 333+92.15
RAMP A-2
SURVEY POINT
N 1,397,781.0612
E 2,154,286.8429



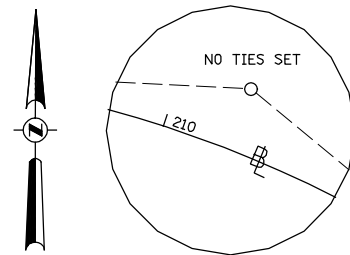
POT STA 345+42.02
RAMP A
SURVEY POINT
N 1,397,776.0632
E 2,153,136.9838



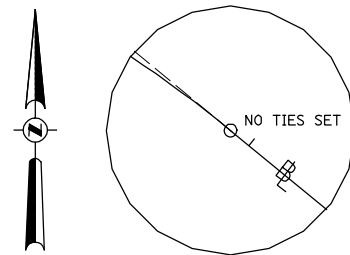
POT STA 200+00.00
RAMP D
SURVEY POINT
N 1,397,663.8646
E 2,153,595.9815



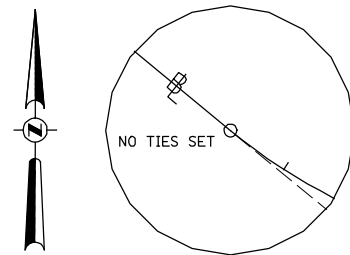
PC STA 208+00.09
RAMP D-1
SURVEY POINT
N 1,397,608.6882
E 2,154,394.1628



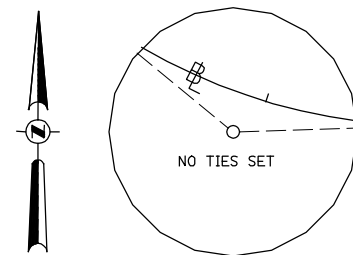
PI STA 210+51.11
RAMP D-1
SURVEY POINT
N 1,397,591.3771
E 2,154,644.5851



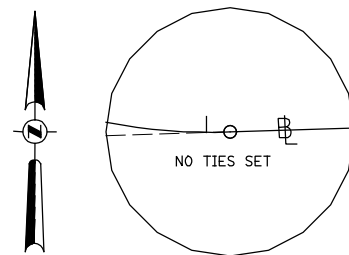
PT STA 212+85.19
RAMP D-1
SURVEY POINT
N 1,397,429.0637
E 2,154,836.0671



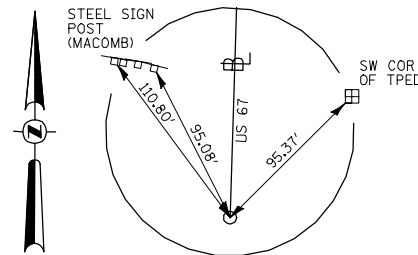
PC STA 215+58.52
RAMP D-2
SURVEY POINT
N 1,397,252.3243
E 2,155,044.5674



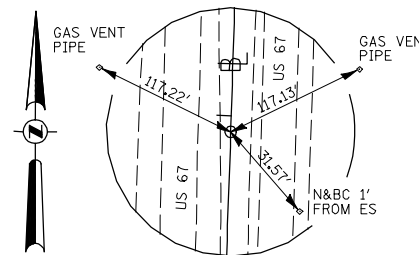
PI STA 216+92.54
RAMP D-2
SURVEY POINT
N 1,397,165.6620
E 2,155,146.8034



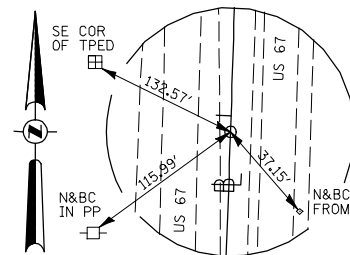
PT STA 218+14.88
RAMP D-2
SURVEY POINT
N 1,397,167.9381
E 2,155,280.8084



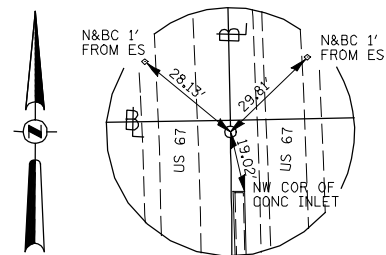
POT STA 419+73.76
US 67 (FAP 310)
5/8" I-ROD W/ CAP (FLUSH)
N 1,394,661.1447
E 2,155,463.1523



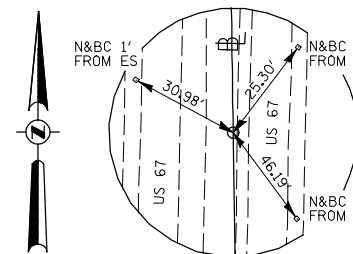
PC STA 437+88.75
US 67 (FAP 310)
5/8" I-ROD W/ CAP (FLUSH)
N 1,396,475.1909
E 2,155,521.5648



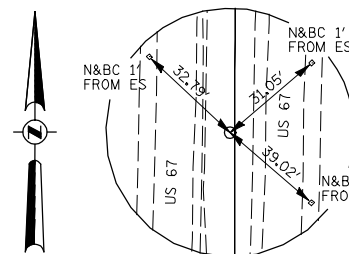
PI STA 441+35.48
US 67 (FAP 310)
5/8" I-ROD W/ CAP (FLUSH)
N 1,396,821.7462
E 2,155,532.7240



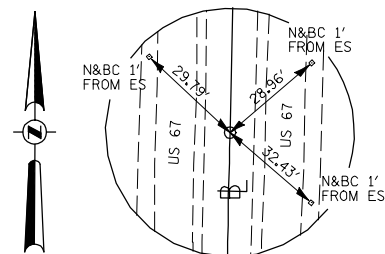
PT STA 444+82.08
US 67 (FAP 310)
5/8" I-ROD W/ CAP (FLUSH)
N 1,397,168.4311
E 2,155,526.8355



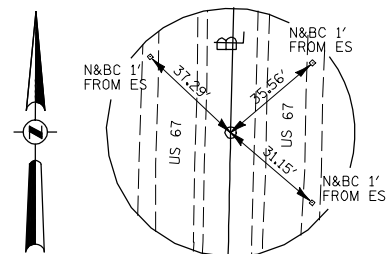
PC STA 455+39.36
US 67 (FAP 310)
5/8" I-ROD W/ CAP (FLUSH)
N 1,398,225.5656
E 2,155,508.8802



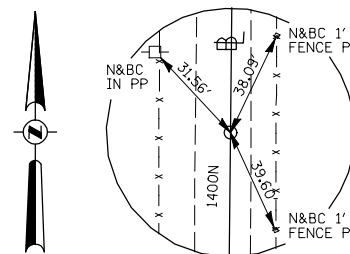
PI STA 458+23.46
US 67 (FAP 310)
5/8" I-ROD W/ CAP (FLUSH)
N 1,398,509.6214
E 2,155,504.0555



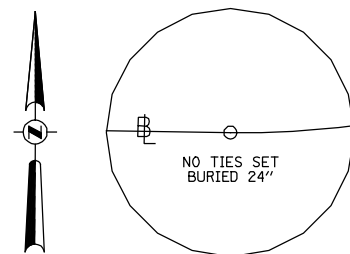
PT STA 461+07.48
US 67 (FAP 310)
5/8" I-ROD W/ CAP (FLUSH)
N 1,398,793.6411
E 2,155,510.6768



POT STA 478+10.63
US 67 (FAP 310)
5/8" I-ROD W/ CAP (FLUSH)
N 1,400,496.3270
E 2,155,550.3713



STA 10+00.00
1400N (TOWER ROAD)
SURVEY SPIKE
N 1,390,584.4488
E 2,141,661.8599



PC STA 12+61.00
1400N (TOWER ROAD)
5/8" I-ROD W/ CAP (BURIED 24")
N 1,390,581.3232
E 2,141,922.8412

FILE NAME =	USER NAME = jdeen	DESIGNED - JRB	REVISED -
W:\Transportation\2891\Grading Plans\2891A17.dgn		DRAWN - JW	REVISED -
		CHECKED - AWM	REVISED -
		DATE -	REVISED -

STATE OF ILLINOIS
DEPARTMENT OF TRANSPORTATION

RAMPS A, D, AND 1400N-TOWER ROAD ALIGNMENT TIES AND BENCHMARKS	
SCALE: N/A	SHEET NO. 5 OF 6 SHEETS
STA. N/A	TO STA. N/A

F.A.P. RTE.	SECTION	COUNTY	TOTAL SHEETS	SHEET NO.
407	(55-31A)	McDONOUGH	671	64
CONTRACT NO. 68A42			ILLINOIS FED. AID PROJECT	