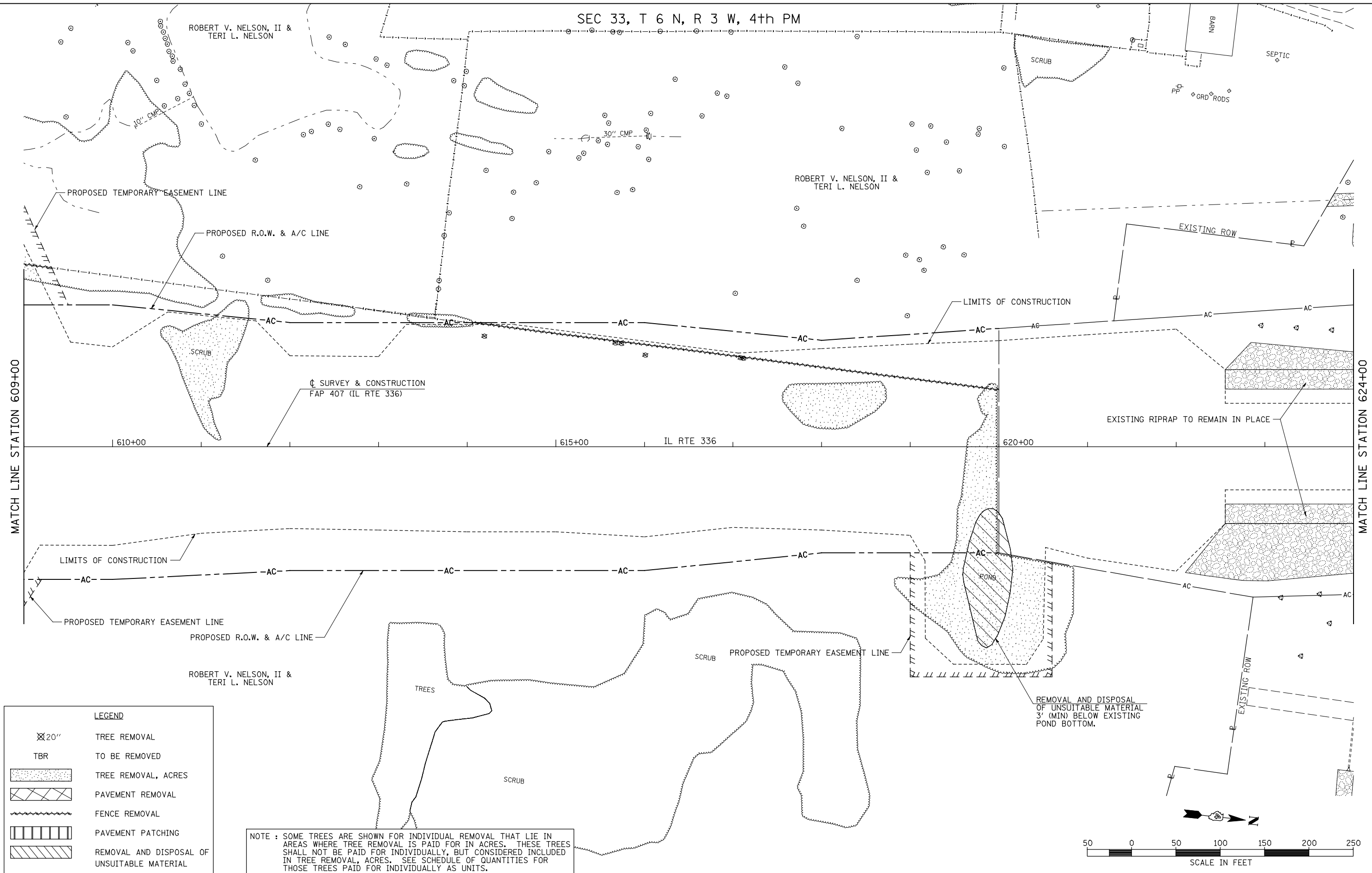


SEC 33, T 6 N, R 3 W, 4th PM

ROBERT V. NELSON, II &  
TERI L. NELSON

ROBERT V. NELSON, II &  
TERI L. NELSON

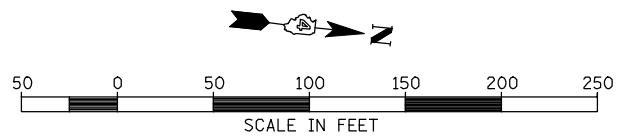
ROBERT V. NELSON, II &  
TERI L. NELSON



**LEGEND**

	20" TREE REMOVAL
	TO BE REMOVED
	TREE REMOVAL, ACRES
	PAVEMENT REMOVAL
	FENCE REMOVAL
	PAVEMENT PATCHING
	REMOVAL AND DISPOSAL OF UNSUITABLE MATERIAL

NOTE : SOME TREES ARE SHOWN FOR INDIVIDUAL REMOVAL THAT LIE IN AREAS WHERE TREE REMOVAL IS PAID FOR IN ACRES. THESE TREES SHALL NOT BE PAID FOR INDIVIDUALLY, BUT CONSIDERED INCLUDED IN TREE REMOVAL, ACRES. SEE SCHEDULE OF QUANTITIES FOR THOSE TREES PAID FOR INDIVIDUALLY AS UNITS.



FILE NAME =	USER NAME = jdeen	DESIGNED - JRB	REVISED -
W:\Transportation\2891\Grading Plans\2891R06.dgn		DRAWN - RLR	REVISED -
PLOT SCALE = 1/8"=50' / IN.		CHECKED - AWM	REVISED -
PLOT DATE = 12/12/2012		DATE - 12-12-12	REVISED -

**STATE OF ILLINOIS**  
**DEPARTMENT OF TRANSPORTATION**

**FAP 407 (IL RTE 336)**  
**REMOVAL PLAN - STATION 609+00 TO STATION 624+00**

SCALE: 1"=50'    SHEET NO. 6 OF 21 SHEETS    STA. 609+00 TO STA. 624+00

F.A.P. RTE.	SECTION	COUNTY	TOTAL SHEETS	SHEET NO.
407	(55-3)A	McDONOUGH	671	76
			CONTRACT NO. 68A42	
ILLINOIS FED. AID PROJECT				