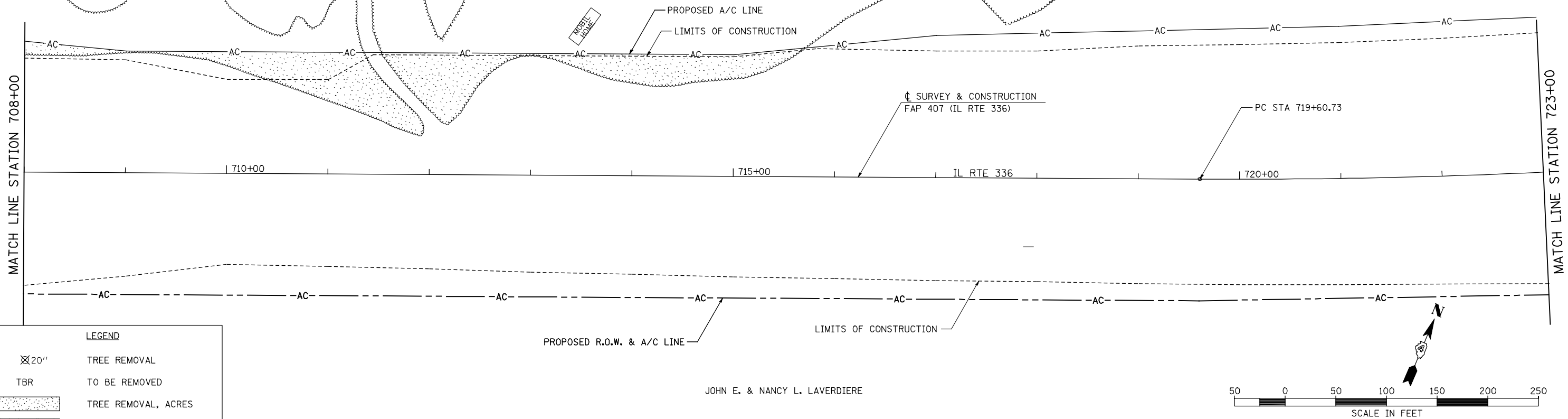


SEC 27, T 6 N, R 3 W, 4th PM
JOHN E. & NANCY L. LAVERDIERE

PLAN	SURVEYED	DATE
	PLOTTED	BY
	ALIGNED	
	CHECKED	
	DATE	
	FILE NAME	
	NO.	

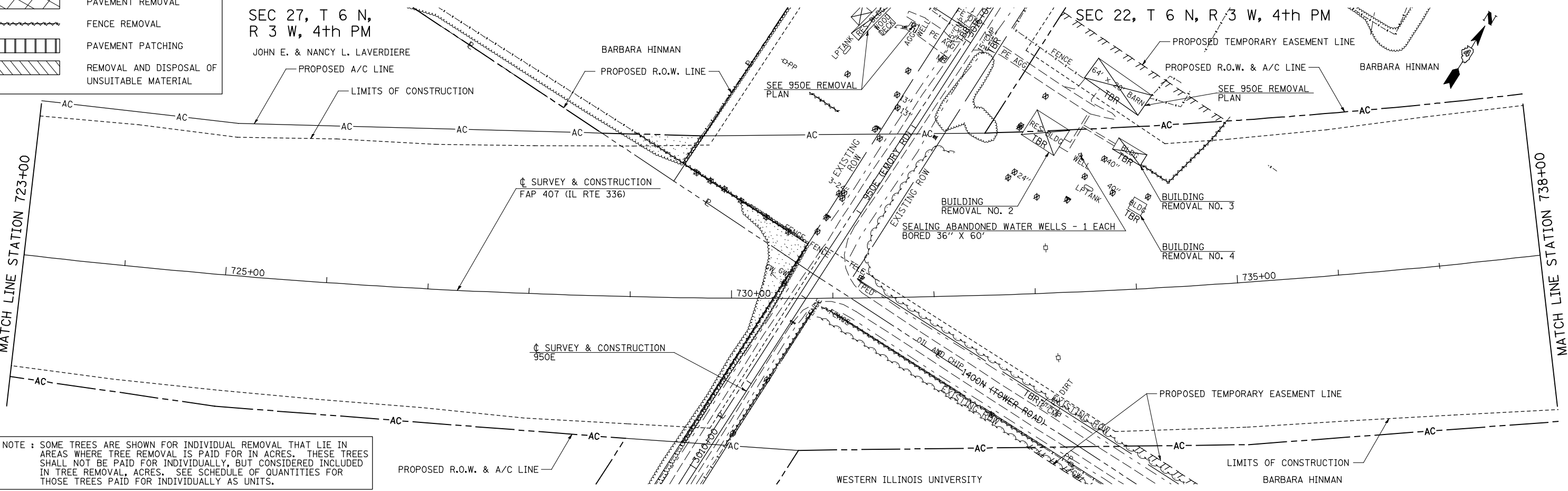
PROFILE	SURVEYED	DATE
	PLOTTED	BY
	ALIGNED	
	CHECKED	
	DATE	
	FILE NAME	
	NO.	



LEGEND

⊗ 20"	TREE REMOVAL
TBR	TO BE REMOVED
[Stippled]	TREE REMOVAL, ACRES
[Cross-hatched]	PAVEMENT REMOVAL
[Wavy line]	FENCE REMOVAL
[Vertical lines]	PAVEMENT PATCHING
[Diagonal lines]	REMOVAL AND DISPOSAL OF UNSUITABLE MATERIAL

SEC 27, T 6 N, R 3 W, 4th PM
JOHN E. & NANCY L. LAVERDIERE



NOTE : SOME TREES ARE SHOWN FOR INDIVIDUAL REMOVAL THAT LIE IN AREAS WHERE TREE REMOVAL IS PAID FOR IN ACRES. THESE TREES SHALL NOT BE PAID FOR INDIVIDUALLY, BUT CONSIDERED INCLUDED IN TREE REMOVAL, ACRES. SEE SCHEDULE OF QUANTITIES FOR THOSE TREES PAID FOR INDIVIDUALLY AS UNITS.

FILE NAME =	USER NAME = jdeen	DESIGNED - JRB	REVISED -	STATE OF ILLINOIS DEPARTMENT OF TRANSPORTATION	FAP 407 (IL RTE 336) REMOVAL PLAN - STATION 708+00 TO STATION 738+00			F.A.P. RTE. 407	SECTION (55-3)A	COUNTY McDONOUGH	TOTAL SHEETS 671	SHEET NO. 83
V:\Transportation\2891\Grading Plans\2891R13.dgn	PLOT SCALE = 100.00' / IN.	DRAWN - RLR	REVISED -		SCALE: 1"=50'	SHEET NO. 13 OF 21 SHEETS	STA. 708+00	TO STA. 738+00	CONTRACT NO. 68A42			
	PLOT DATE = 12/12/2012	CHECKED - AWM	REVISED -		ILLINOIS FED. AID PROJECT							
		DATE - 12-12-12	REVISED -									