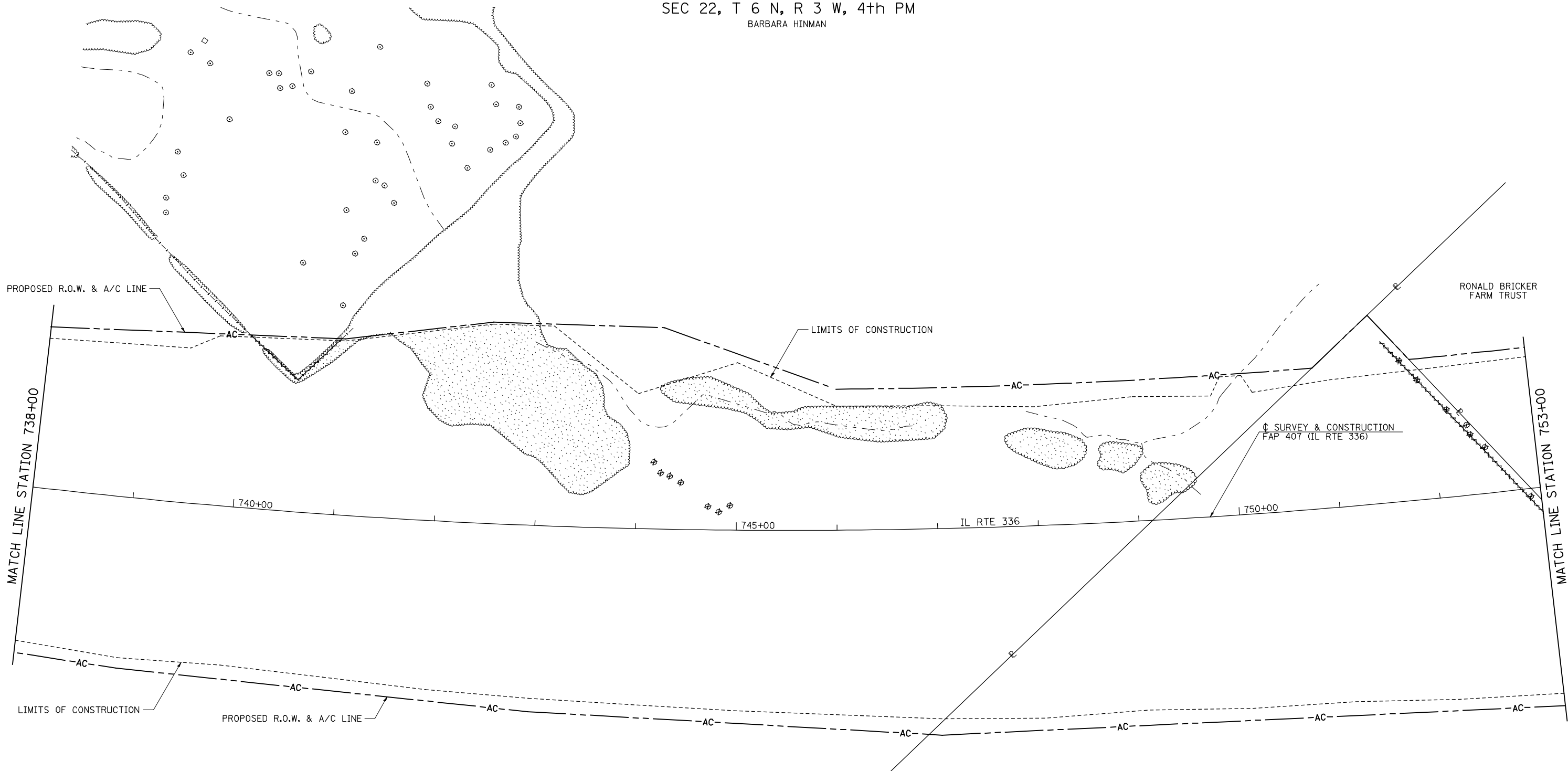


SEC 22, T 6 N, R 3 W, 4th PM
BARBARA HINMAN

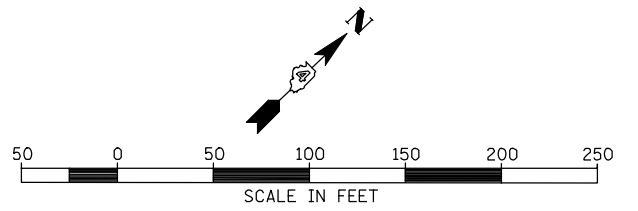
PLAN	SURVEYED	DATE
	PLOTTED	
	CHECKED	
	BY	
	NO.	

PROFILE	SURVEYED	DATE
	PLOTTED	
	CHECKED	
	BY	
	NO.	



LEGEND	
⊗ 20"	TREE REMOVAL
TBR	TO BE REMOVED
[Stippled Box]	TREE REMOVAL, ACRES
[Cross-hatched Box]	PAVEMENT REMOVAL
[Wavy Line]	FENCE REMOVAL
[Vertical Lines]	PAVEMENT PATCHING
[Diagonal Lines]	REMOVAL AND DISPOSAL OF UNSUITABLE MATERIAL

NOTE : SOME TREES ARE SHOWN FOR INDIVIDUAL REMOVAL THAT LIE IN AREAS WHERE TREE REMOVAL IS PAID FOR IN ACRES. THESE TREES SHALL NOT BE PAID FOR INDIVIDUALLY, BUT CONSIDERED INCLUDED IN TREE REMOVAL, ACRES. SEE SCHEDULE OF QUANTITIES FOR THOSE TREES PAID FOR INDIVIDUALLY AS UNITS.



BARBARA HINMAN

ROGER L. GRAY

FILE NAME =	USER NAME = jdeen	DESIGNED - JRB	REVISED -
V:\Transportation\2891\Grading Plans\2891R14-A.dgn		DRAWN - RLR	REVISED -
	PLOT SCALE = 100.00' / IN.	CHECKED - AWM	REVISED -
	PLOT DATE = 12/12/2012	DATE - 12-12-12	REVISED -

STATE OF ILLINOIS
DEPARTMENT OF TRANSPORTATION

FAP 407 (IL RTE 336)			
REMOVAL PLAN - STA 738+00 TO STA 753+00			
SCALE: 1"=50'	SHEET NO. 14 OF 21 SHEETS	STA. 738+00	TO STA. 753+00

F.A.P. RTE.	SECTION	COUNTY	TOTAL SHEETS	SHEET NO.
407	(55-3)A	McDONOUGH	671	84
			CONTRACT NO. 68A42	
ILLINOIS FED. AID PROJECT				