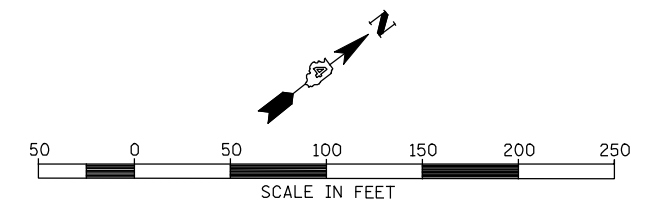
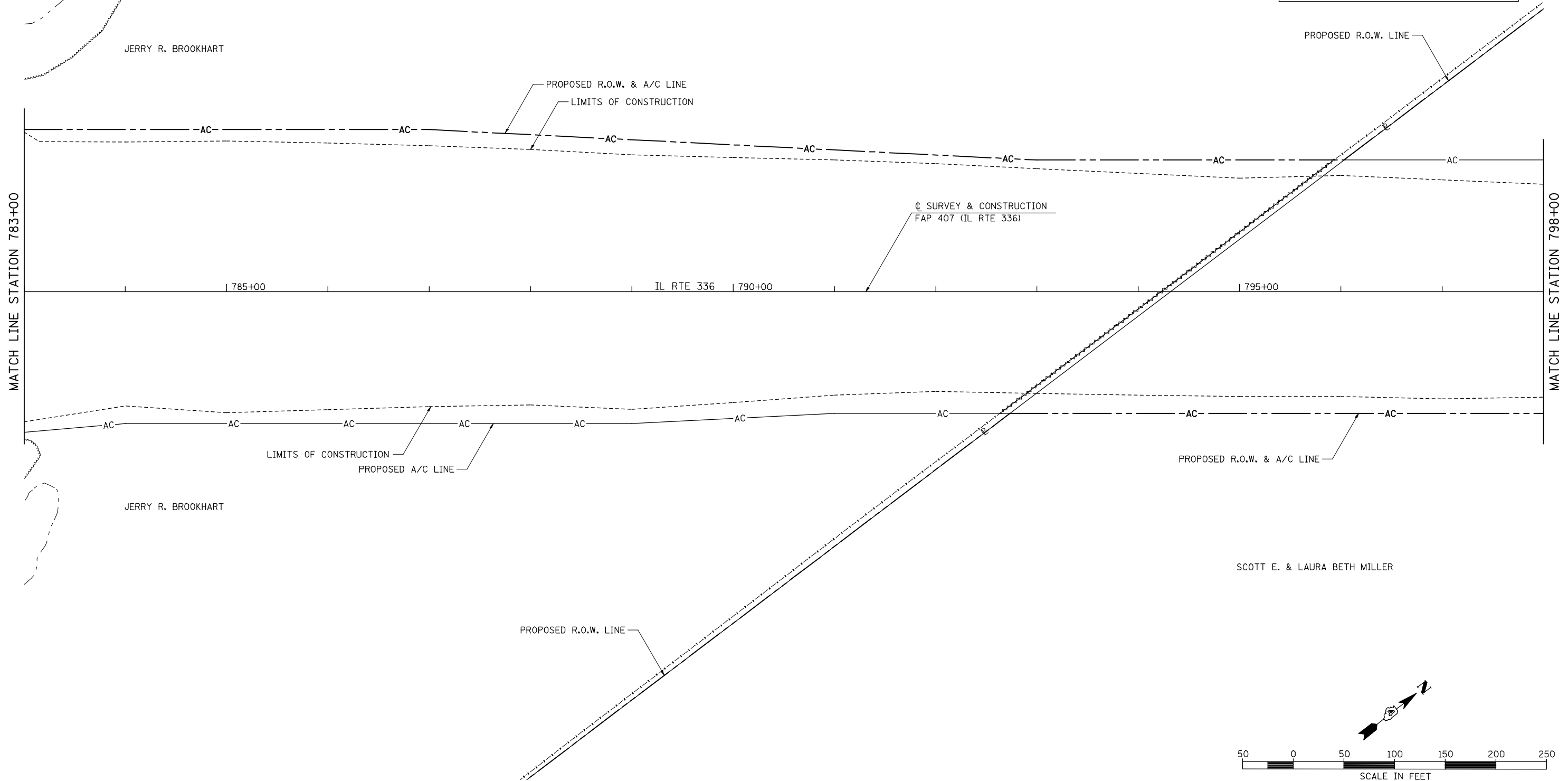


NOTE : SOME TREES ARE SHOWN FOR INDIVIDUAL REMOVAL THAT LIE IN AREAS WHERE TREE REMOVAL IS PAID FOR IN ACRES. THESE TREES SHALL NOT BE PAID FOR INDIVIDUALLY, BUT CONSIDERED INCLUDED IN TREE REMOVAL, ACRES. SEE SCHEDULE OF QUANTITIES FOR THOSE TREES PAID FOR INDIVIDUALLY AS UNITS.

LEGEND	
⊗ 20"	TREE REMOVAL
TBR	TO BE REMOVED
[Stippled Box]	TREE REMOVAL, ACRES
[Cross-hatched Box]	PAVEMENT REMOVAL
[Wavy Line]	FENCE REMOVAL
[Vertical Lines]	PAVEMENT PATCHING
[Diagonal Lines]	REMOVAL AND DISPOSAL OF UNSUITABLE MATERIAL

PLAN	SURVEYED	DATE
NOTE BOOK NO.	PLOTTED	BY
	CHECKED	
	DATE	
	FILE NAME	

PROFILE	SURVEYED	DATE
NOTE BOOK NO.	GRADES CHECKED	BY
	STRUCTURE NOT AT THIS CHKD	



FILE NAME =	USER NAME = jdeen	DESIGNED - JRB	REVISED -	STATE OF ILLINOIS DEPARTMENT OF TRANSPORTATION	FAP 407 (IL RTE 336) REMOVAL PLAN - STATION 783+00 TO STATION 798+00		F.A.P. RTE. 407	SECTION (55-3)A	COUNTY McDONOUGH	TOTAL SHEETS 671	SHEET NO. 87
V:\Transportation\2891\Grading Plans\2891R15-B.dgn	PLOT SCALE = 100.00' / IN.	DRAWN - RLR	REVISED -		SCALE: 1"=50'	SHEET NO. 17 OF 21 SHEETS	STA. 783+00 TO STA. 798+00	CONTRACT NO. 68A42		ILLINOIS FED. AID PROJECT	
	PLOT DATE = 12/12/2012	CHECKED - AWM	REVISED -								
		DATE - 12-12-12	REVISED -								