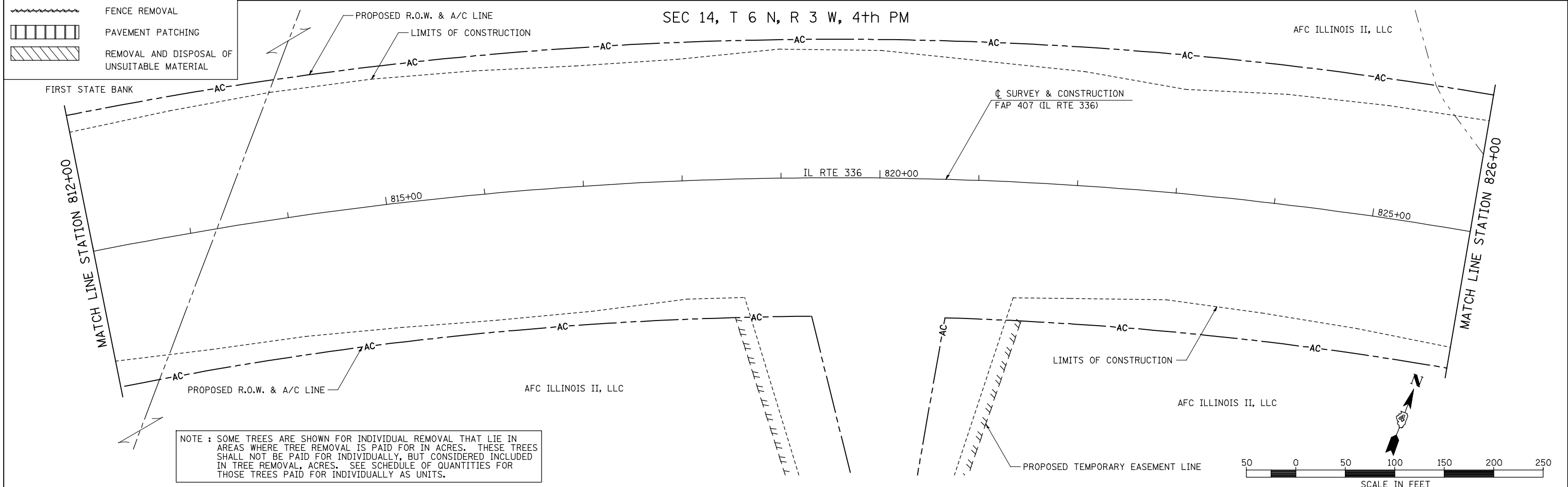
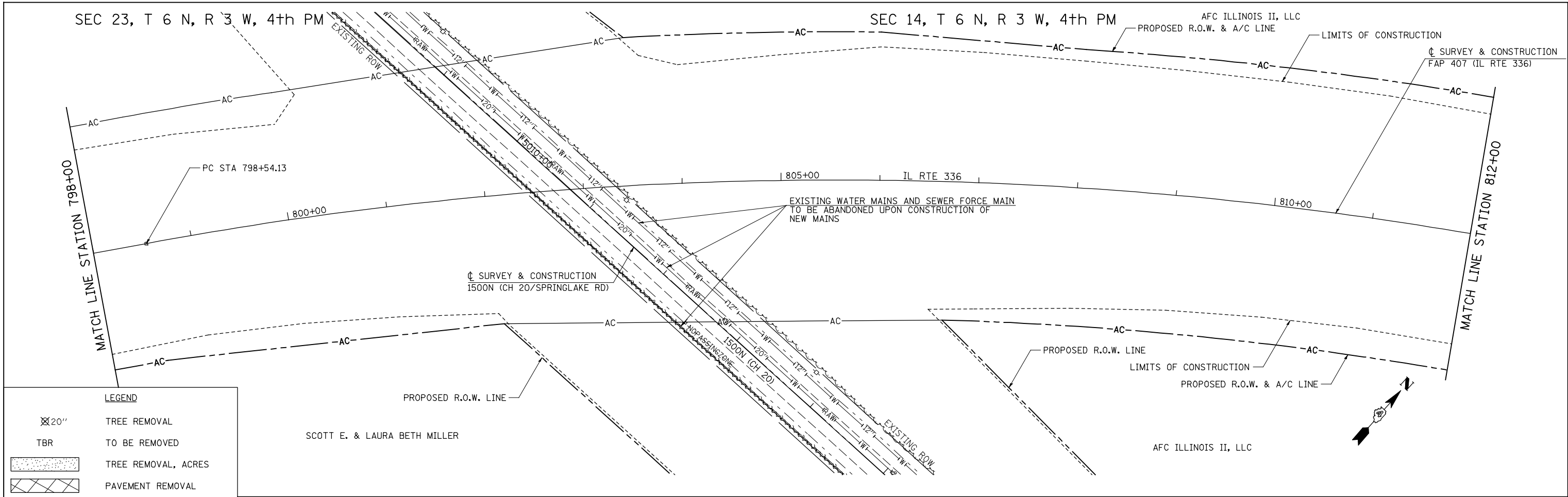
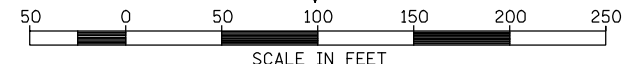


PLAN	SURVEYED	DATE
	PLOTTED	BY
	ALIGNMENT	CHECKED
	NOTE BOOK	NO.
	NO.	CARD FILE NAME

PROFILE	SURVEYED	DATE
	PLOTTED	BY
	GRADES CHECKED	CHECKED
	NOTE BOOK	NO.
	NO.	STRUCTURE NOTATION CHKD



NOTE : SOME TREES ARE SHOWN FOR INDIVIDUAL REMOVAL THAT LIE IN AREAS WHERE TREE REMOVAL IS PAID FOR IN ACRES. THESE TREES SHALL NOT BE PAID FOR INDIVIDUALLY, BUT CONSIDERED INCLUDED IN TREE REMOVAL, ACRES. SEE SCHEDULE OF QUANTITIES FOR THOSE TREES PAID FOR INDIVIDUALLY AS UNITS.



FILE NAME =	USER NAME = jdeen	DESIGNED - JRB	REVISED -
V:\Transportation\2891\Grading Plans\2891R16.dgn		DRAWN - RLR	REVISED -
		CHECKED - AWM	REVISED -
		DATE - 12-12-12	REVISED -

STATE OF ILLINOIS
DEPARTMENT OF TRANSPORTATION

FAP 407 (IL RTE 336)
REMOVAL PLAN - STATION 798+00 TO STATION 826+00

F.A.P. RTE.	SECTION	COUNTY	TOTAL SHEETS	SHEET NO.
407	(55-31A)	McDONOUGH	671	88
			CONTRACT NO. 68A42	
ILLINOIS FED. AID PROJECT				

SCALE: 1"=50' SHEET NO. 18 OF 21 SHEETS STA. 798+00 TO STA. 826+00