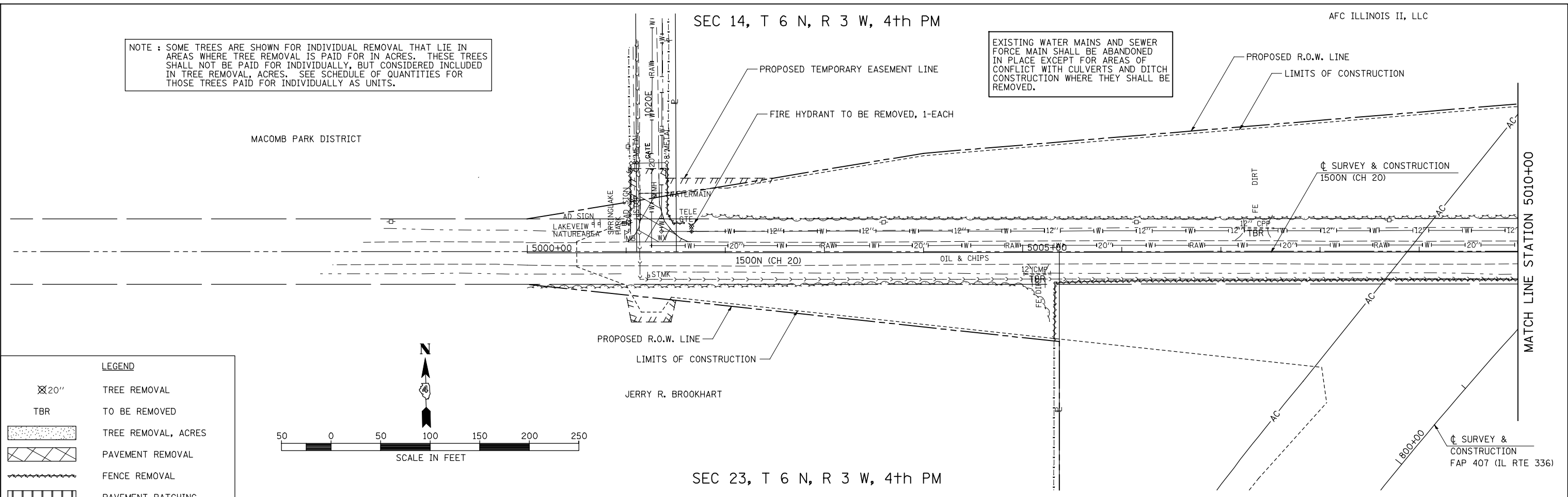


SEC 14, T 6 N, R 3 W, 4th PM

AFC ILLINOIS II, LLC

NOTE : SOME TREES ARE SHOWN FOR INDIVIDUAL REMOVAL THAT LIE IN AREAS WHERE TREE REMOVAL IS PAID FOR IN ACRES. THESE TREES SHALL NOT BE PAID FOR INDIVIDUALLY, BUT CONSIDERED INCLUDED IN TREE REMOVAL, ACRES. SEE SCHEDULE OF QUANTITIES FOR THOSE TREES PAID FOR INDIVIDUALLY AS UNITS.

EXISTING WATER MAINS AND SEWER FORCE MAIN SHALL BE ABANDONED IN PLACE EXCEPT FOR AREAS OF CONFLICT WITH CULVERTS AND DITCH CONSTRUCTION WHERE THEY SHALL BE REMOVED.



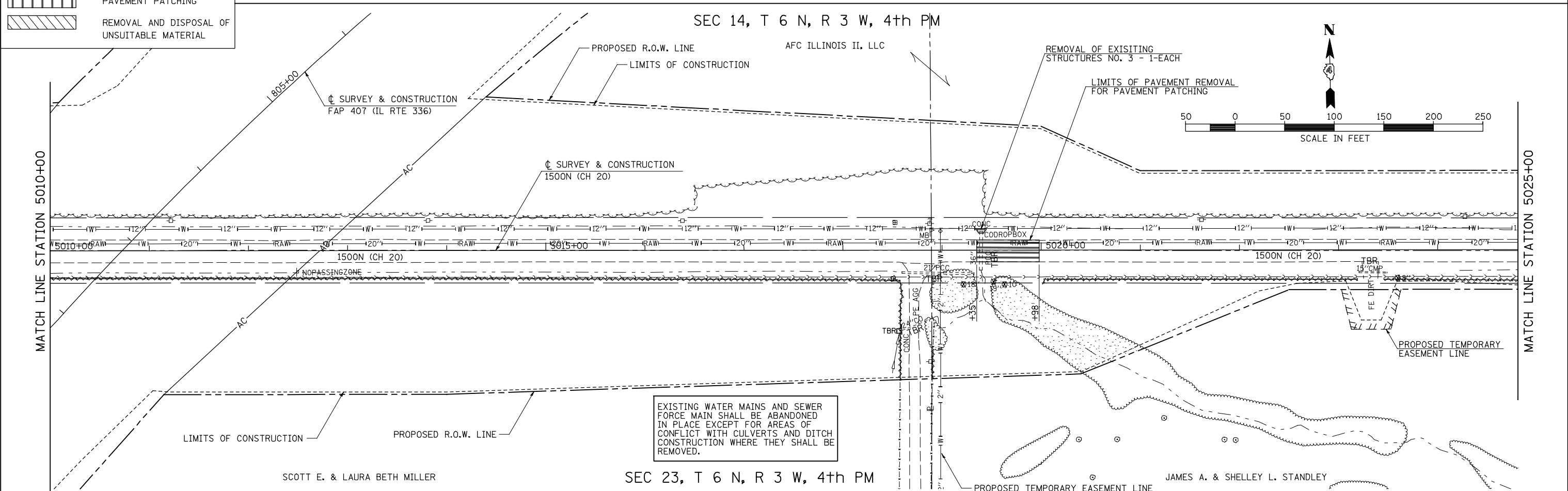
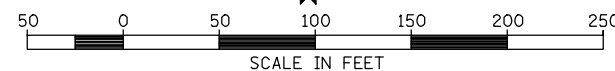
SEC 23, T 6 N, R 3 W, 4th PM

SEC 14, T 6 N, R 3 W, 4th PM

AFC ILLINOIS II, LLC

REMOVAL OF EXISTING STRUCTURES NO. 3 - 1-EACH

LIMITS OF PAVEMENT REMOVAL FOR PAVEMENT PATCHING



EXISTING WATER MAINS AND SEWER FORCE MAIN SHALL BE ABANDONED IN PLACE EXCEPT FOR AREAS OF CONFLICT WITH CULVERTS AND DITCH CONSTRUCTION WHERE THEY SHALL BE REMOVED.

**LEGEND**

	TREE REMOVAL
	TO BE REMOVED
	TREE REMOVAL, ACRES
	PAVEMENT REMOVAL
	FENCE REMOVAL
	PAVEMENT PATCHING
	REMOVAL AND DISPOSAL OF UNSUITABLE MATERIAL

FILE NAME =	USER NAME = jdeen	DESIGNED - JRB	REVISED -
V:\Transportation\2891\Grading Plans\2891R22(CH20).dgn		DRAWN - RLR	REVISED -
PLOT SCALE = 1/8" = 1' / IN.		CHECKED - AWM	REVISED -
PLOT DATE = 12/12/2012		DATE - 12-12-12	REVISED -

STATE OF ILLINOIS  
DEPARTMENT OF TRANSPORTATION

SCALE: 1"=50'	FAP 407 (IL RTE 336)	SECTION	COUNTY	TOTAL SHEETS	SHEET NO.
	REMOVAL PLAN 1500N (CH 20)	407	McDONOUGH	671	94
	STATION 4998+00 TO STATION 5025+00	(55-3)A			
	SHEET NO. 3 OF 8 SHEETS				
	STA. 4998+00 TO STA. 5025+00				

F.A.P. RTE.	SECTION	COUNTY	TOTAL SHEETS	SHEET NO.
407	(55-3)A	McDONOUGH	671	94
CONTRACT NO. 68A42				
ILLINOIS FED. AID PROJECT				