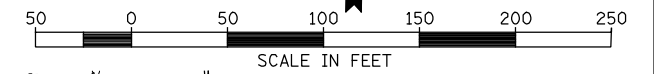
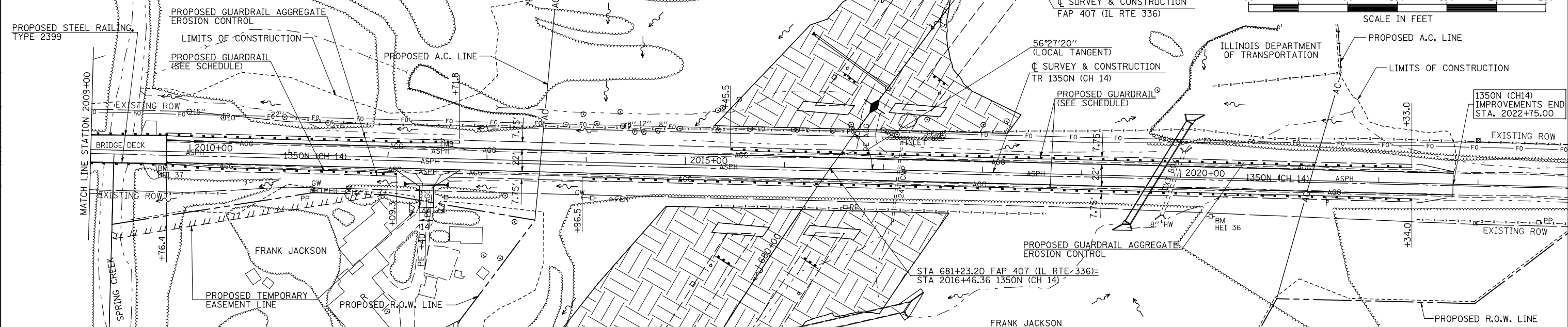


FOR PROPOSED GRADING AT INTERSECTION OF IL RTE 336 AND CH14, SEE SEPARATE GRADING PLAN.



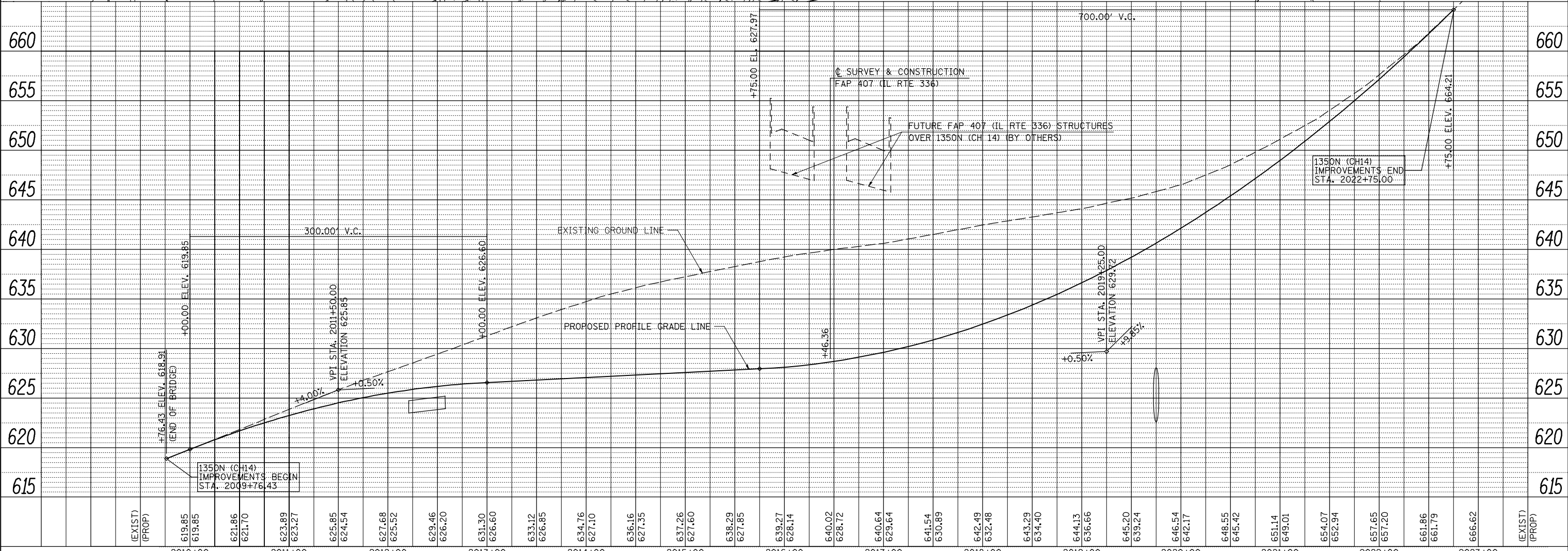
LEGEND

SAND BLANKET DRAIN OVER WICK DRAIN FIELD (SEE SPECIAL SOIL DETAIL)



DATE	
BY	
PLAN	
NOTE BOOK NO.	
CHECKED	
ALIGNED	
FILE NAME	

DATE	
BY	
PROFILE	
GRADES CHECKED	
STRUCTURE NOTATIONS CHKD	



2010+00	2011+00	2012+00	2013+00	2014+00	2015+00	2016+00	2017+00	2018+00	2019+00	2020+00	2021+00	2022+00	2023+00															
(EXIST) (PROP)	619.85 619.85	621.86 621.70	623.89 623.27	625.85 624.54	627.68 625.52	629.46 626.20	631.30 626.60	633.12 626.85	634.76 627.10	636.16 627.35	637.26 627.60	638.29 627.85	639.27 628.14	640.02 628.72	640.64 629.64	641.54 630.89	642.49 632.48	643.29 634.40	644.13 636.66	645.20 639.24	646.54 642.17	648.55 645.42	651.14 649.01	654.07 652.94	657.65 657.20	661.86 661.79	666.62	(EXIST) (PROP)

FILE NAME = V:\Transportation\2891\Grading Plans\2891\2891\2891\CH14.dgn
 USER NAME = jdeen
 PLOT SCALE = 100.0000' / IN.
 PLOT DATE = 12/12/2012

DESIGNED - JRB
 DRAWN - TJD
 CHECKED - AWM
 DATE - 12-12-12

REVISED -
 REVISED -
 REVISED -
 REVISED -

STATE OF ILLINOIS DEPARTMENT OF TRANSPORTATION

FAP 407 (IL RTE 336)
ROADWAY PLAN & PROFILE 1350N-STA. 2009+00 TO STA. 2022+75.00
 SCALE: 1"=50' SHEET NO. 2 OF 2 SHEETS STA. 2009+00 TO STA. 2022+75.00

F.A.P. RTE. 407	SECTION (55-3)A	COUNTY McDONOUGH	TOTAL SHEETS 671	SHEET NO. 101
CONTRACT NO. 68A42			ILLINOIS FED. AID PROJECT	