

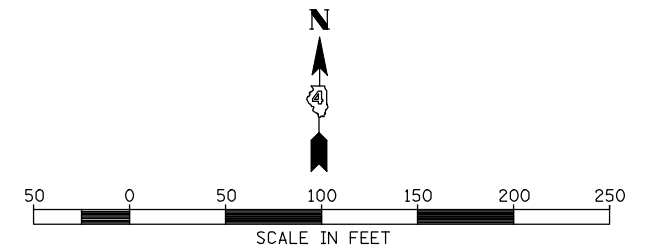
SEC 14, T 6 N, R 3 W, 4th PM

SEC 13, T 6 N, R 3 W, 4th PM

STA 6024+84.91 1100E =  
STA 10837+74.26 SERVICE DRIVE

PROP. CURVE SERVDR-1  
PI STA. = 10839+02.40  
 $\Delta = 90^\circ 09' 44''$  (RT)  
D = 114° 35' 30"  
R = 50.00'  
T = 50.14'  
L = 78.68'  
E = 20.81'  
e = NC  
P.C. STA. = 10838+52.26  
P.T. STA. = 10839+30.94

PROP. SERVDR-2  
PI STA. = 10842+98.40  
 $\Delta = 90^\circ 09' 44''$  (LT)  
D = 38° 11' 50"  
R = 150.00'  
T = 150.43'  
L = 236.04'  
E = 62.43'  
e = NC  
P.C. STA. = 10841+47.98  
P.T. STA. = 10843+84.02



PLAN	SURVEYED	DATE
	PLOTTED	
	NOTED	
	CHECKED	
	BY	
	NO.	

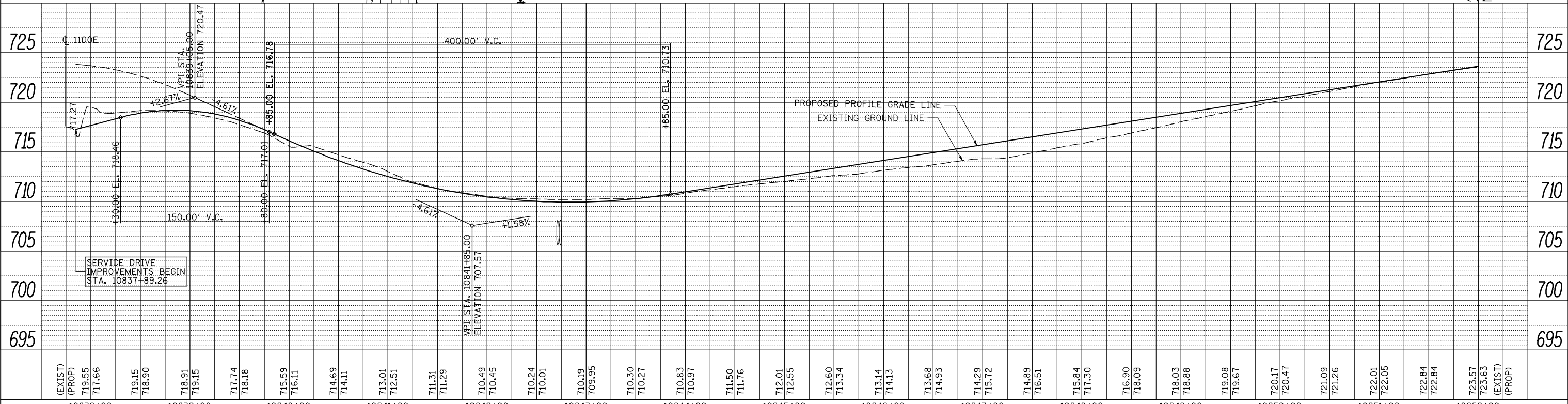
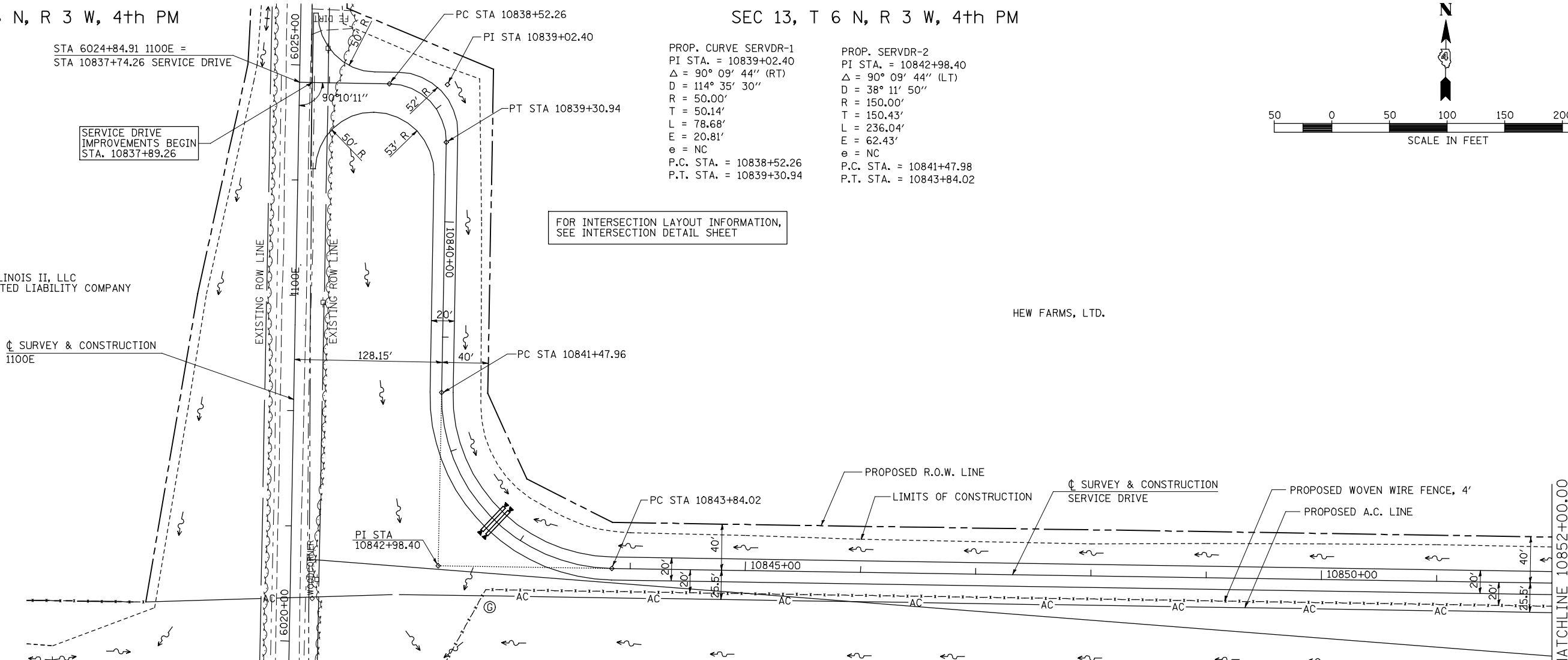
PROFILE	SURVEYED	DATE
	PLOTTED	
	NOTED	
	CHECKED	
	BY	
	NO.	

AFC ILLINOIS II, LLC  
A DELAWARE LIMITED LIABILITY COMPANY

HEW FARMS, LTD.

CL SURVEY & CONSTRUCTION  
1100E

FOR INTERSECTION LAYOUT INFORMATION,  
SEE INTERSECTION DETAIL SHEET



10838+00	10839+00	10840+00	10841+00	10842+00	10843+00	10844+00	10845+00	10846+00	10847+00	10848+00	10849+00	10850+00	10851+00	10852+00																																													
(EXIST) 719.55	(PROP) 717.66	719.15	718.90	718.91	719.15	717.74	718.18	715.59	716.11	714.69	714.11	713.01	712.51	711.31	711.29	710.49	710.45	710.24	710.01	710.19	709.95	710.30	710.27	710.83	710.97	711.50	711.76	712.01	712.55	712.60	713.34	713.14	714.13	713.68	714.93	714.29	715.72	714.89	716.51	715.84	717.30	716.90	718.09	718.03	718.88	719.08	719.67	720.17	720.47	721.09	721.26	722.01	722.05	722.84	722.84	723.57	723.63	(EXIST) 723.63	(PROP)

FILE NAME = USER NAME = jdeen  
V:\transportation\2891\Grading Plans\2891P02(SD).dgn  
PLOT SCALE = 1/8"=1'-0" / IN.  
PLOT DATE = 12/12/2012

DESIGNED - JRB  
DRAWN - TJD  
CHECKED - AWM  
DATE - 12-12-12

REVISED -  
REVISED -  
REVISED -  
REVISED -

STATE OF ILLINOIS  
DEPARTMENT OF TRANSPORTATION

FAP 407 (IL RTE 336)  
ROADWAY PLAN & PROFILE SERV. DR.-STA. 10837+85.26 TO STA 10852+00  
SCALE: 1"=50' SHEET NO. 1 OF 3 SHEETS STA. 10837+85.26 TO STA. 10852+00

F.A.P. RTE. 407	SECTION (55-31A)	COUNTY MCDONOUGH	TOTAL SHEETS 671	SHEET NO. 102
CONTRACT NO. 68A42			ILLINOIS FED. AID PROJECT	