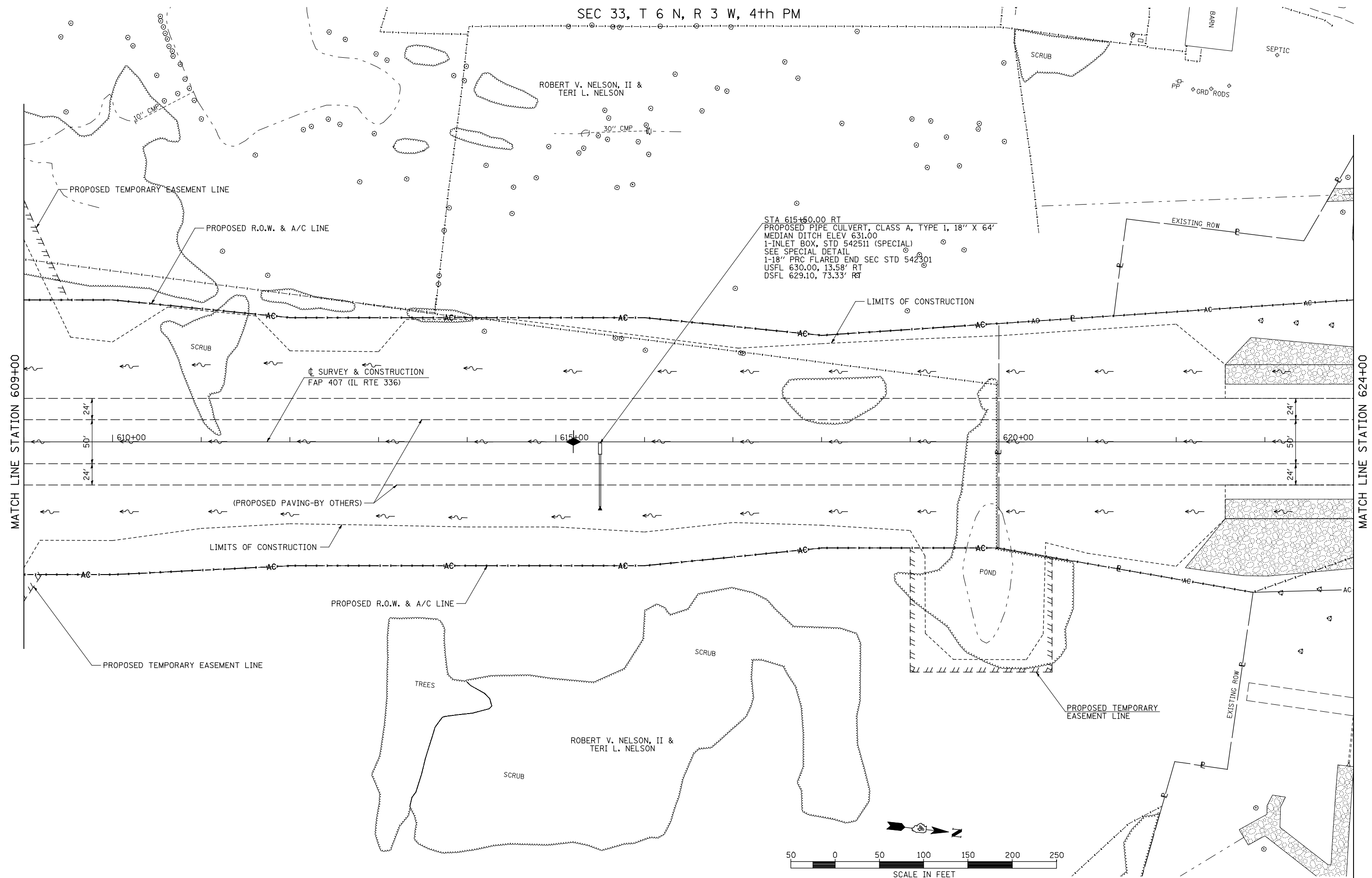


SEC 33, T 6 N, R 3 W, 4th PM

ROBERT V. NELSON, II &
TERI L. NELSON

STA 615+50.00 RT
PROPOSED PIPE CULVERT, CLASS A, TYPE 1, 18" X 64'
MEDIAN DITCH ELEV 631.00
1-INLET BOX, STD 542511 (SPECIAL)
SEE SPECIAL DETAIL
1-18" PRC FLARED END SEC STD 542301
USFL 630.00, 13.58' RT
DSFL 629.10, 73.33' RT



FILE NAME =	USER NAME = jdeen	DESIGNED - JRB	REVISED -
W:\Transportation\2891\Grading Plans\2891D06.dgn		DRAWN - RLR	REVISED -
	PLOT SCALE = 1/8" = 1' / IN.	CHECKED - AWM	REVISED -
	PLOT DATE = 12/12/2012	DATE - 12-12-12	REVISED -

**STATE OF ILLINOIS
DEPARTMENT OF TRANSPORTATION**

**FAP 407 (IL RTE 336)
GRADING & DRAINAGE PLAN & PROFILE
STATION 609+00 TO STATION 624+00**

SCALE: 1"=50'
SHEET NO. 11 OF 37 SHEETS
STA. 609+00 TO STA. 624+00

F.A.P. RTE.	SECTION	COUNTY	TOTAL SHEETS	SHEET NO.
407	(55-3)A	McDONOUGH	671	117
			CONTRACT NO. 68A42	
ILLINOIS FED. AID PROJECT				