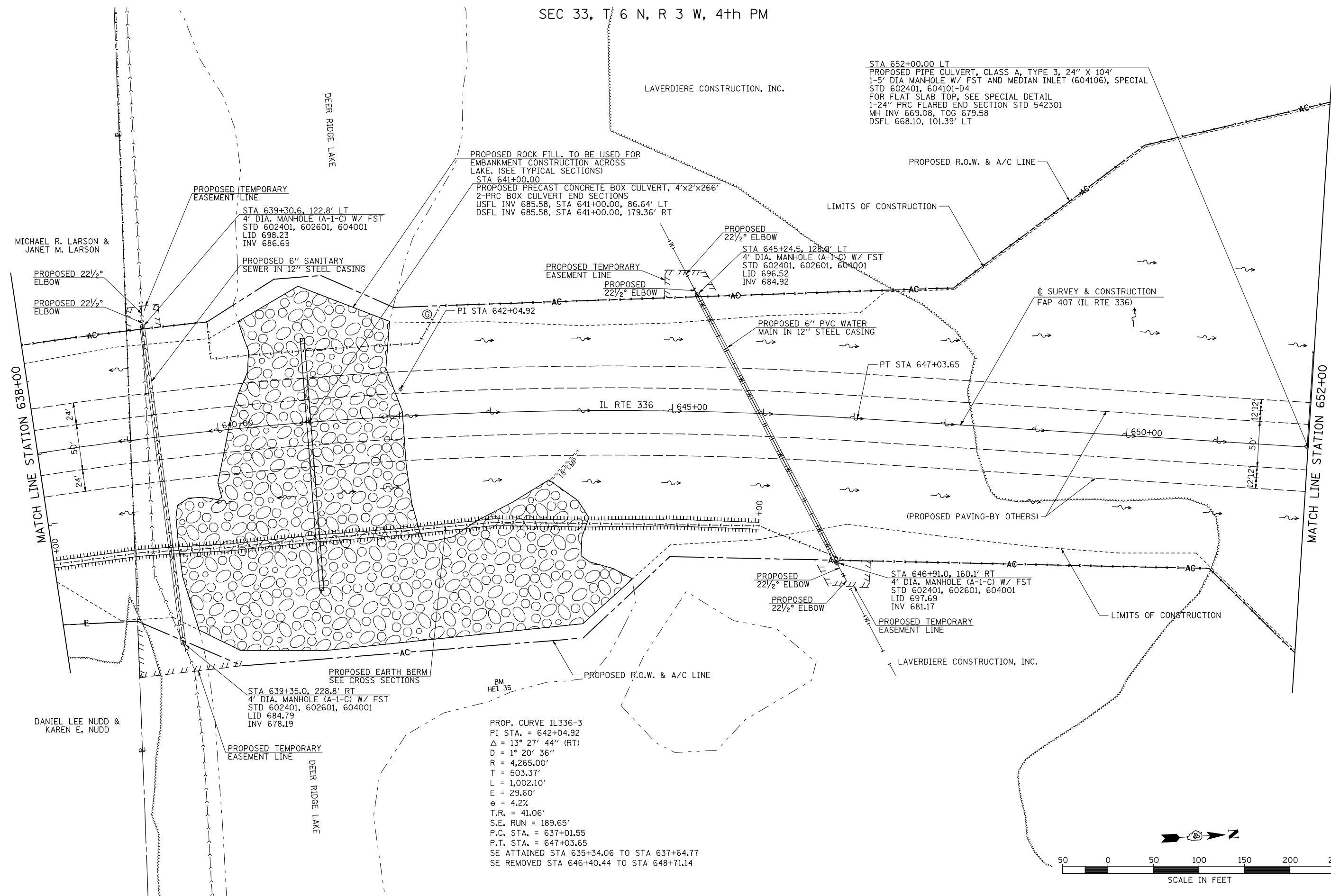


SEC 33, T 6 N, R 3 W, 4th PM



MICHAEL R. LARSON &
JANET M. LARSON

DANIEL LEE NUDD &
KAREN E. NUDD

LAVERDIERE CONSTRUCTION, INC.

STA 652+00.00 LT
PROPOSED PIPE CULVERT, CLASS A, TYPE 3, 24" X 104'
1-5' DIA MANHOLE W/ FST AND MEDIAN INLET (604106), SPECIAL
STD 602401, 604101-D4
FOR FLAT SLAB TOP, SEE SPECIAL DETAIL
1-24" PRC FLARED END SECTION STD 542301
MH INV 669.08, TOG 679.58
DSFL 668.10, 101.39' LT

PROPOSED TEMPORARY
EASEMENT LINE
STA 639+30.6, 122.8' LT
4' DIA. MANHOLE (A-1-C) W/ FST
STD 602401, 602601, 604001
LID 698.23
INV 686.69

PROPOSED 6" SANITARY
SEWER IN 12" STEEL CASING

PROPOSED ROCK FILL TO BE USED FOR
EMBANKMENT CONSTRUCTION ACROSS
LAKE. (SEE TYPICAL SECTIONS)
STA 641+00.00

PROPOSED PRECAST CONCRETE BOX CULVERT, 4'x2'x266'
2-PRC BOX CULVERT END SECTIONS
USFL INV 685.58, STA 641+00.00, 86.64' LT
DSFL INV 685.58, STA 641+00.00, 179.36' RT

PROPOSED
22 1/2° ELBOW
STA 645+24.5, 128.9' LT
4' DIA. MANHOLE (A-1-C) W/ FST
STD 602401, 602601, 604001
LID 696.52
INV 684.92

PROPOSED TEMPORARY
EASEMENT LINE

PROPOSED
22 1/2° ELBOW

PROPOSED 6" PVC WATER
MAIN IN 12" STEEL CASING

PT STA 647+03.65

CL SURVEY & CONSTRUCTION
FAP 407 (IL RTE 336)

PROPOSED
22 1/2° ELBOW
PROPOSED
22 1/2° ELBOW

STA 646+91.0, 160.1' RT
4' DIA. MANHOLE (A-1-C) W/ FST
STD 602401, 602601, 604001
LID 697.69
INV 681.17

PROPOSED TEMPORARY
EASEMENT LINE

LAVERDIERE CONSTRUCTION, INC.

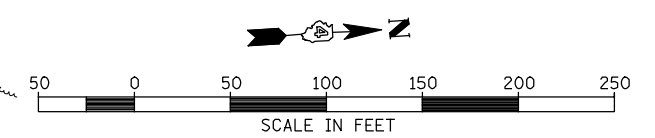
PROPOSED EARTH BERM
SEE CROSS SECTIONS

STA 639+35.0, 228.8' RT
4' DIA. MANHOLE (A-1-C) W/ FST
STD 602401, 602601, 604001
LID 684.79
INV 678.19

PROPOSED TEMPORARY
EASEMENT LINE

BM
HEI 35

PROP. CURVE IL336-3
PI STA. = 642+04.92
Δ = 13° 27' 44" (RT)
D = 1° 20' 36"
R = 4,265.00'
T = 503.37'
L = 1,002.10'
E = 29.60'
e = 4.27'
T.R. = 41.06'
S.E. RUN = 189.65'
P.C. STA. = 637+01.55
P.T. STA. = 647+03.65
SE ATTAINED STA 635+34.06 TO STA 637+64.77
SE REMOVED STA 646+40.44 TO STA 648+71.14



FILE NAME = W:\Transportation\2891\Grading Plans\2891D08.dgn	USER NAME = jdeen	DESIGNED - JRB	REVISED -	STATE OF ILLINOIS DEPARTMENT OF TRANSPORTATION	FAP 407 (IL RTE 336) GRADING & DRAINAGE PLAN & PROFILE STATION 638+00 TO STATION 652+00			F.A.P. RTE. 407	SECTION (55-3)A	COUNTY McDONOUGH	TOTAL SHEETS 671	SHEET NO. 121
PLOT SCALE = 1/8" = 1' / IN.	CHECKED - AWM	REVISIED -	REVISIED -		SCALE: 1"=50'	SHEET NO. 15 OF 37 SHEETS	STA. 638+00	TO STA. 652+00	CONTRACT NO. 68A42			
PLOT DATE = 12/12/2012	DATE - 12-12-12	REVISIED -	REVISIED -		ILLINOIS FED. AID PROJECT							